

# Wild Earth Travel

*Small Ships, Big Adventures*

**wildearth-travel.com**

**info@wildearth-travel.com**

## HISTORIC TRAILS & WILDERNESS: SCOTLAND, FAROES & ICELAND FROM EDINBURGH

Welcome to Aurora's Historic Trails & Wilderness: Scotland, Faroes & Iceland expedition.

Journey from Scotland's storied shores to Iceland's dramatic landscapes on this unforgettable expedition. Begin in Edinburgh, where medieval lanes and towering castles set the stage before we sail west to the Hebrides. Explore Iona, birthplace of Christianity in Britain, and marvel at the basalt columns of Fingal's Cave on Staffa. In the Outer Hebrides, visit ancient standing stones on Lewis and the remote, seabird-filled isles of St Kilda. Crossing the North Atlantic, we reach the Faroe Islands -- a hidden gem of rugged cliffs, Viking tales, and colourful villages. Explore Torshavn, cruise beneath soaring bird cliffs, and hike amidst wild, green fjords. Iceland welcomes us with the charming village of Seyðisfjörður and the wonders of Vatnajökull National Park. Choose your adventure: hike glaciers, explore canyons, or soak in geothermal hot springs while surrounded by icebergs. Finally, visit the volcanic Westman Islands, home to puffins, seals, and the story of Heimaey's dramatic 1973 eruption. Wildlife encounters, rich history, and awe-inspiring landscapes await on this remarkable northern voyage.



### ITINERARY

#### Day 1 Arrive in Edinburgh

Having made your way to Edinburgh, you will be met by a representative of Aurora Expeditions and transferred to our group hotel. Upon arrival at your included hotel, please visit the Aurora Expeditions hospitality desk to collect your luggage cabin tags and to speak with our ground operations team, who

Wild Earth Travel

*Small Ships, Big Adventures*

**0800 945 3327** (within New Zealand) | +64 (0) 3 365 1355 | **1800 107 715** (within Australia)

info@wildearth-travel.com | **wildearth-travel.com**

# Wild Earth Travel

*Small Ships, Big Adventures*



**wildearth-travel.com**

**info@wildearth-travel.com**

may have information to share with you about pre-embarkation or to provide you with information about where to dine, withdraw cash or purchase last minute items from a local pharmacy or supermarket.

The remainder of your time is at leisure. All meals today are at your own expense.

Accommodation: Courtyard by Marriott Edinburgh Hotel (or similar)

## Day 2 Embark in Troon

After breakfast, check-out and bring your luggage to the foyer. Please place any items required today in your hand luggage as your main bag will be transferred to the ship.

Edinburgh awaits us this morning as our local guide welcomes us with stories of Scotland's capital city. Stretching just over one mile, five cobbled streets make up the walking precinct of the Royal Mile. Starting at The Palace of Holyroodhouse, the official residence of the British monarch in Scotland, we'll step back in time to hear tales of princes, poets, and politicians as we stroll past some of Edinburgh's most iconic buildings including the Church of Canongate and Scotland's own parliament house.

Perched atop an extinct volcano, Edinburgh Castle dominates the capital city's skyline just as it has dominated Scotland's long and colourful history. This instantly recognisable fortress is a powerful national symbol, and part of Edinburgh's World Heritage Site. Note: entry to the castle is not guaranteed (tickets not available until closer to departure).

You'll have time to explore the castle precinct and Royal Mile which are scattered with friendly pubs and charismatic restaurants (lunch own expense). Our two-hour transfer takes us to the west coast port of Troon where our expedition team will welcome you aboard the Greg Mortimer in the late afternoon.

Once onboard, settle into your cabin before our important briefings. We will set sail along Scotland's northwest coast in the evening and meet your expedition team and crew.

## Day 3-4 Inner Hebrides

From golden beaches to jagged peaks, bleak moors and heather clad hills;

from abandoned settlements to picturesque villages, our days in the Hebrides archipelago will be packed with variety. We may explore remote lochs beneath some of Britain's most untamed mountains and wander between unusual rock formations. We may watch for whales, dolphins, otters, seals, and the increasingly rare basking sharks. Possibly we will land at an island reserve that is home to red deer and white-tailed sea eagles.

Kayakers will be introduced to their craft and will be briefed for their adventures, before picking up paddles to circumnavigate tiny islets or glide into narrow waterways that intertwine the islands. Hikers may opt for panoramic views from summits and ridges.

Early the next morning we will aim for the tiny island of Iona. Barely 5 kilometres (3 miles) long, Iona is renowned as the birthplace of Christianity in Britain. It is also a burial ground of early Scottish Kings. The Irish monk, St Columba and twelve disciples, landed here and founded a monastery in 563 CE. From this base, St Columba set about converting Scotland and much of Northern England to Christianity.

On Staffa, we hope to have the chance to explore Fingals Cave, where the melodious sound of waves crashing against towering basalt pillars inspired Mendelssohn's Hebridean Overture. We may enter the cave in Zodiacs, or clamber ashore to walk into the mouth of the cave. On shore we will also find Puffins in abundance.

## Days 5 Outer Hebrides

From the Inner Hebrides we make our way to the Outer Hebrides - also known as the Western Isles - that stretch for 209 kilometres (128 miles) and look out on their western side to the Atlantic Ocean. Our first stop is at the Isle of Lewis, the largest and northern-most island in the Outer Hebrides. We plan to make a stop at Callanais, where archaeology buffs will be keen to see the fascinating group of Standing Stones, dating from around 3,000 BCE.

Weather permitting, we plan to land at the isolated archipelago (and World Heritage site) of St Kilda, where derelict crofts bear testament to the fortitude of islanders who once tended the unique Soay sheep and harvested seabirds for food--and to pay their rent in the form of wool, meat and feathers. The isles hold Europe's most important seabird colony and is home to Britain's highest sea stacks.

## Days 6-8 The Faroe Islands

Wild Earth Travel

*Small Ships, Big Adventures*

**0800 945 3327** (within New Zealand) | +64 (0) 3 365 1355 | **1800 107 715** (within Australia)

info@wildearth-travel.com | **wildearth-travel.com**

# Wild Earth Travel

*Small Ships, Big Adventures*

**wildearth-travel.com**

**info@wildearth-travel.com**

Nestled in the heart of the North Atlantic, the Faroe Islands are a hidden gem waiting to be discovered. This remote archipelago, composed of 18 volcanic islands, boasts a population of just 50,000, offering an unparalleled escape from the ordinary. Steeped in Viking history and characterised by dramatic landscapes of towering cliffs, verdant mountains, and deep fjords, the Faroes are a paradise for nature lovers and adventure seekers alike.

Over the next three days we hope to explore the islands of Sandoy, Streymoy and Eysturoy, beginning in Torshavn, a captivating blend of old and new. Wander through the town's quaint, colourful houses, many adorned with traditional grass roofs, and imagine life as a Viking settler. Encounter the iconic Faroese sheep, their woolly coats a stark contrast against the rugged terrain, and perhaps catch a glimpse of the elusive Faroese ponies. No visit to the Faroe Islands is complete without a boat trip to the mesmerising Vestmanna bird cliffs. Soar above the ocean as thousands of seabirds, including puffins, razorbills, and guillemots, fill the air with their enchanting calls. For those seeking adventure, the island of Suduroy offers unparalleled hiking opportunities. Explore pristine coastal paths, surrounded by dramatic mountain backdrops, and revel in the solitude of this unspoiled natural wonderland. The Faroe Islands will cast their spell on you as you discover a world of breathtaking beauty, warm hospitality, and authentic experiences.

## Days 9 Sea Crossing to Iceland

Enjoy the sea crossing to Iceland accompanied by sea birds while searching for whales. Enjoy informative talks from our team of experts, get to know your fellow expeditioners, stay active in the gym or treat yourself to a massage in the wellness centre.

## Days 10 Seyðisfjörður

Explore Seyðisfjörður, a picturesque fishing village that is renowned for its charming collection of colourful wooden buildings located around the lagoon. Take a stroll around town and discover the timber houses that are remnants from when the Norwegians settled here and established the herring fishing facilities from 1870-1900. From the valley above the town, the river Fjarðara tumbles down in beautiful cascades to the lagoon. There are a number of delightful hiking trails to explore, or alternatively, you can discover a flourishing cultural scene with an arts centre, the famous blue church that stages music concerts and the only two cinemas in the east of Iceland. Back in town,

browse the stores where you will discover handicrafts by local artists and artisans - perfect as a souvenir or gift.

## Days 11 Djúpivogur

In Iceland's east, we disembark in Djúpivogur, our gateway to Vatnajökull National Park, home to Europe's largest glacier.

Personalise your expedition with our included 'Your Choice' experiences that best suits your interests and level of fitness.

### Option 1 - Waterfalls, Glacial Lagoons & Hot Tubs

Duration: 10 hours including driving to/from Djúpivogur

Level of difficulty: Easy

Maximum numbers: 60 (2 x 30)

Your first stop is at Fossarfoss, a waterfall surrounded by majestic mountains with spectacular views. The layered basalt flow formations that surround the area offer a striking contrasting vista making this a favourite location among photographers. From here we depart for Vatnajökull National Park, one of the most famous natural attractions in the world. Explore the astonishing and exotic natural beauty of Jokulsarlon Glacier Lagoon by four-wheeled Amphibian boat. Here we observe giant icebergs float slowly towards the ocean from the glacier.

Following lunch, re-join the coach and head for Diamond beach, a black sand beach where the icebergs are washed ashore, and Fjallsarlon lagoon, renowned for the shimmering icebergs that float in its waters. Concluding our day, we continue to the geothermal hot tubs in Hoffell, perfect for a nice, relaxing soak with an otherworldly view.

### Option 2 - Wonders of Vatnajökull National Park & Canyon Hike

Duration: 9 hours including driving to/from Djúpivogur

Level of difficulty: Moderate

Maximum numbers: 40

Your first stop is at Fossarfoss, a waterfall surrounded by majestic mountains

Wild Earth Travel

*Small Ships, Big Adventures*

**0800 945 3327** (within New Zealand) | +64 (0) 3 365 1355 | **1800 107 715** (within Australia)

info@wildearth-travel.com | **wildearth-travel.com**

# Wild Earth Travel

*Small Ships, Big Adventures*



**wildearth-travel.com**

**info@wildearth-travel.com**

with spectacular views. The layered basalt flow formations that surround the area offer a striking contrasting vista making this a favourite location among photographers. From here we depart for the dramatic Mulaglufur Canyon, a true hidden gem ideal for hiking. Here we navigate through overgrown bushes, small river streams, and different trails along the rim of the canyon. Find yourself marvelling at the panoramic views of Fjallsarlon glacier lagoon, picturesque mountains, vibrant textures, and intriguing rock formations. Following lunch, re-join the coach and head for Vatnajokull National Park, one of the most famous natural attractions in the world. Explore the astonishing and exotic natural beauty of Jokulsarlon Glacier Lagoon by foot. Here we observe giant icebergs float slowly towards the ocean from the glacier. Re-join the coach for Diamond beach, a black sand beach where the icebergs are washed ashore.

Note: Mulaglufur Canyon Hike is 3.8km (2.35 miles) one way and approximately 3 hours duration. Terrain - 315 metre elevation with a narrow unpaved trail with two small river crossings, very easy to cross.

Option 3 - Falljokull Glacier Hike

Duration: 9 hours (4 hours on the glacier)

Level of difficulty: Moderate-Difficult

Maximum numbers: 45

Your first and only stop today is at Falljokull, one of the most impressive outlet glaciers of the Vatnajokull ice cap and a once in a lifetime experience. We will take an inspiring walk along a winding path through the glacier's dramatically changing landscape. Arriving at the tongue of the glacier, we will have your crampons ready and waiting for you. With your knowledgeable guide leading the way, you will soon be exploring impressive terrain, walking through a wonderland of ice formations and brilliant blue colours. Following a hard-earned late lunch, re-join the coach and depart for the ship in Djupivogur.

Note: Falljokull Glacier Hike equipment provided - ice axe, crampons, harness and helmet. The minimum shoe size to attach crampons is EU 35 (boots can be hired at additional cost if necessary). Requires a higher level of fitness and agility as you will be on your feet for a long period of time (4 hours) and the terrain is challenging. Please note the transfer to and from the ship and Falljokull Glacier is 3 hours each way, so come prepared with a book or enjoy the magnificent scenery and a nice nap enroute.

## Days 12 Westman Islands

Enjoy a morning and lunch onboard, searching for whales and seabirds. Our team of experts entertains us with informative talks.

Located off Iceland's south coast, the Westman Islands were formed by volcanic eruptions around 10,000 years ago. Westman Islands are surrounded by 15 other uninhabited islands and around 30 rocks and skerries offering refuge for rich array of seabirds. Westman Islands are considered to have the largest Atlantic puffin colony in the world, and when sailing around the islands it is not uncommon to see puffins but also whales and seals.

Personalise your expedition with our included 'Your Choice' experiences that best suits your interests and level of fitness.

Option 1 - Eldheimar Volcano Museum & Puffin Viewing

Duration: 3 hours

Level of difficulty: Easy

Located off Iceland's south coast, the Westman Islands were formed by volcanic eruptions around 10,000 years ago. Heimaey is the main island in the archipelago, with a population of around 4,200. Various catastrophes have befallen the island of Heimaey and its inhabitants throughout history. Probably the most tragic incident was the volcanic eruption in 1973. Visit a unique volcano museum that tells the story of the Heimaey volcanic eruption, the emergence of Surtsey Island in 1963, and the geology of the Westman Islands.

We'll continue our drive to Storfosfi cape for some puffin watching, offering ample photo opportunities to capture shots of the charming little birds. Afterwards, enjoy some free time to explore the island if time permits.

Option 2 - Eldheimar Volcano Climb & Museum

Duration: 3 hours

Level of difficulty: Difficult

Learn more about the geology and volcanology of Iceland during a two-hour hike up a volcano. Reaching the summit, you can still feel the warmth emanating from its subterranean activity. At the end of the hike, you visit a unique volcano museum that tells the story of the Heimaey volcanic eruption, the emergence of Surtsey Island in 1963, and the geology of the Westman

Wild Earth Travel

*Small Ships, Big Adventures*

**0800 945 3327** (within New Zealand) | +64 (0) 3 365 1355 | **1800 107 715** (within Australia)

info@wildearth-travel.com | **wildearth-travel.com**



# Wild Earth Travel

*Small Ships, Big Adventures*



**wildearth-travel.com**

**info@wildearth-travel.com**

Islands. Afterwards, enjoy some free time to explore the island if time permits.

Sail past Surtsey Island, a UNESCO World Heritage site that emerged from the sea in 1963 and is one of the youngest land masses on earth.

## Day 13 Disembark in Reykjavik

During the early morning, we cruise into Reykjavik and disembark at approximately 8.00 am. Farewell your Expedition Team and fellow passengers as we all continue our onward journeys. Transfer to Keflavik airport.

Note: At the conclusion of the voyage, we recommend booking flights departing after 12.00 pm on the day of disembarkation in case there are delays.

### Please note:

Itineraries are subject to change.

# Wild Earth Travel

*Small Ships, Big Adventures*

**wildearth-travel.com**

**info@wildearth-travel.com**

## YOUR SHIP: GREG MORTIMER

<b>YOUR SHIP:</b>	<b>Greg Mortimer</b>
<b>VESSEL TYPE:</b>	<b>Expedition</b>
<b>LENGTH:</b>	<b>104 metres</b>
<b>PASSENGER CAPACITY:</b>	<b>132</b>
<b>BUILT/REFURBISHED:</b>	<b>2019</b>

Purpose-built for polar expeditions, the Greg Mortimer combines over 25 years of expedition experience with cutting-edge nautical design. With a capacity of just 132 passengers, the ship offers an intimate, comfortable base for exploring the world's most remote regions while maintaining a focus on multiple landings, flexible itineraries, and a family-like atmosphere.

Designed with the revolutionary ULSTEIN X-BOW™, the ship handles rough seas with ease, offering a smoother ride and lower environmental impact. Hydraulic viewing platforms on Deck 5 provide unobstructed views of wildlife, while dedicated Zodiac launching areas make landings fast and efficient. The ship carries 15 Zodiacs for up to three daily excursions.

For adventurers, a spacious activity platform supports kayaking, climbing, diving and more, with quick gear access via the mudroom and drying areas. The ship is also Polar Code 6 compliant and features advanced safety systems, including backup propulsion and a fully equipped medical centre.

Onboard comforts include large observation decks, a 180° lounge, open bridge policy, and a well-stocked library. Enjoy family-style meals with complimentary drinks, and relax at the

Wellness Centre with a gym, spa, sauna, and massage services. Daily expert-led lectures enrich your journey with insights into nature, wildlife, and local cultures.

The Greg Mortimer offers a modern, safe, and environmentally conscious way to explore the polar regions - with all the comfort and spirit of true adventure.



adventure.

**Wild Earth Travel**

*Small Ships, Big Adventures*

**0800 945 3327** (within New Zealand) | +64 (0) 3 365 1355 | **1800 107 715** (within Australia)

info@wildearth-travel.com | **wildearth-travel.com**

# Wild Earth Travel

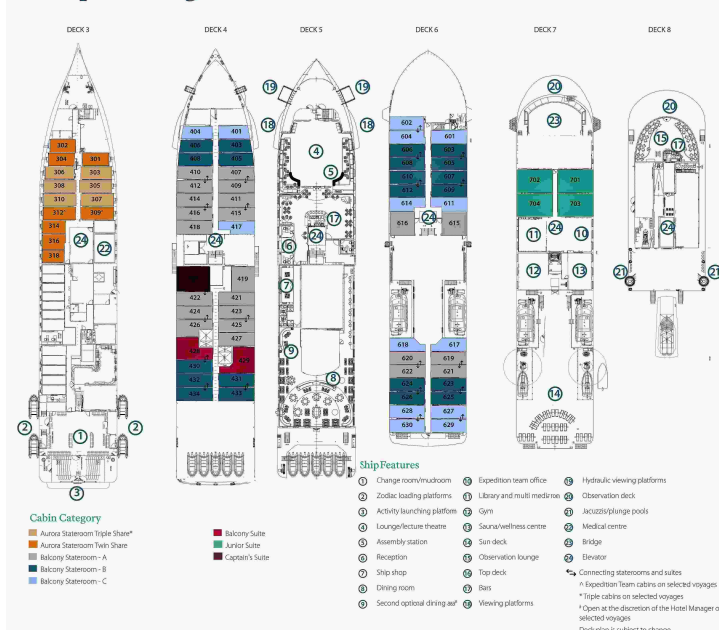
*Small Ships, Big Adventures*

[wildearth-travel.com](http://wildearth-travel.com)

[info@wildearth-travel.com](mailto:info@wildearth-travel.com)

## INSIDE YOUR SHIP

### Deck plan - Greg Mortimer



### Aurora Stateroom Triple



### Aurora Stateroom Twin



### Balcony Stateroom - A



### Balcony Stateroom - B



### Balcony Stateroom - C



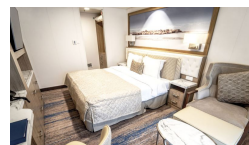
### Balcony Stateroom Superior



### Captain's Suite



### Junior Suite



# Wild Earth Travel

*Small Ships, Big Adventures*

**wildearth-travel.com**

**info@wildearth-travel.com**

## PRICING

**17-May-2027 to 29-May-2027**

<b>Aurora Stateroom Triple</b>	<b>24995 AUD pp</b>
<b>Aurora Stateroom Twin</b>	<b>25695 AUD pp</b>
<b>Balcony Stateroom - C</b>	<b>27895 AUD pp</b>
<b>Balcony Stateroom - B</b>	<b>29395 AUD pp</b>
<b>Balcony Stateroom - A</b>	<b>31495 AUD pp</b>
<b>Balcony Stateroom Superior</b>	<b>34495 AUD pp</b>
<b>Junior Suite</b>	<b>41095 AUD pp</b>
<b>Captain's Suite</b>	<b>46895 AUD pp</b>

## Optional extras & upgrades

### Sea Kayaking. From 1240 AUD

One of the most exhilarating ways to experience Antarctica, the Arctic and beyond. Sea kayaking holidays in the humbling wilderness of Antarctica, the Arctic, and some of the world's most biodiverse regions, are guaranteed to stir your soul. Paddle around brash ice and near icebergs of all shapes and sizes, absorbing the majestic scenery as it unfolds before you.

**Wild Earth Travel**

*Small Ships, Big Adventures*

**0800 945 3327** (within New Zealand) | +64 (0) 3 365 1355 | **1800 107 715** (within Australia)

info@wildearth-travel.com | **wildearth-travel.com**