



HEART OF THE ARCTIC - CANADA & GREENLAND EXPEDITION 2026

This Arctic expedition offers an unforgettable journey through Greenland and Canada's northernmost regions, blending breathtaking natural beauty with rich cultural encounters. Begin your adventure by sailing through Greenland's stunning fjords, including the immense Kangerlussuatsiaq Fjord, surrounded by calving glaciers, towering mountains, and cascading waterfalls. Explore Nuuk, Greenland's capital, where ancient traditions and modern life coexist, and visit the world-renowned Qilakitsoq mummies. As you cross the Davis Strait, deepen your appreciation for the Arctic through workshops, cultural experiences, and wildlife spotting on deck.

In Canada, marvel at the unspoiled landscapes of Ungava Bay, hike the tundra of Nunavik's Ungava Peninsula, and experience the warmth of Inuit communities in Salluit and Kinngait. Witness iconic Arctic wildlife, from polar bears to whales, as you navigate Hudson Strait and Frobisher Bay. Enjoy opportunities to connect with Inuit artists and cultural educators, gaining insight into their heritage and traditions. From dramatic geology to incredible biodiversity, this voyage offers a perfect blend of adventure, discovery, and profound connection to the Arctic's land, sea, and people.



ITINERARY

Day 1: Kangerlussuaq, Greenland

Cross the Arctic Circle

Begin your journey by sailing out of Kangerlussuaq Fjord (Søndre Strømfjord), a 190-kilometre-long fjord surrounded by mountains and glaciers.

Cross the Arctic Circle on your way and spend time on deck watching for aurora borealis.

Kangerlussuaq, the settlement at the head of the fjord, is a former US Air Force



Wild Earth Travel

Small Ships, Big Adventures

wildearth-travel.com

info@wildearth-travel.com

base.

After your charter flight from Toronto, ON, you'll transfer to the ship by Zodiac.

Day 2: Kangerlussuaq Fjord (Evighedsfjorden)

Take a Zodiac Cruise at the Foot of a Glacier

Kangerlussuaq means "the rather big fjord" in Greenlandic, while the Danish name Evighedsfjorden translates to "the fjord of eternity," underscoring its vastness and seemingly never-ending nature.

See why Kangerlussuaq Fjord lives up to its name and marvel at this complex coastal waterway that includes calving glaciers, sheer bird cliffs, and streams cascading against a towering mountain backdrop.

Explore this sublime glacial landscape by ship and by Zodiac.

The waters here are relatively warm, due to the West Greenland Current and the subarctic location.

Day 3: Nuuk

Visit Museums, Shops, and Cafes

Enjoy the chance to explore Nuuk, the capital of Greenland and the world's northernmost capital! Nuuk, meaning, "the headland," sits at the mouth of a gigantic fjord system.

Established as the first Greenlandic town in 1728, Nuuk remains the bustling centre of the country today. While here, we may catch sight of humpback whales in the fjord, reindeer

roaming the land, and birds soaring overhead. The town itself is home to the University of Greenland, a cathedral dating back to 1849, and Greenland's National Museum.

We'll enjoy a guided orientation of this bustling metropolis and the opportunity to visit the National Museum where the world-famous Qilakitsoq mummies rest. You'll also have time to explore the city at your own leisure.

Day 4: At Sea – Davis Strait

Learn From Inuit in Their Homeland

Deepen your understanding of the environment, cultures, and history of the region as we sail across the Davis Strait towards Canada. Get the privileged opportunity to engage with and learn from Inuit in their homeland.

Enjoy workshops and presentations, watch a documentary, and get out on deck! Try your hand at athletic feats during an interactive cultural performance of Inuit games.

Through shared experiences and interactions, develop a deep appreciation for the culture and gain a connection to the stunning landscapes we traverse.

Keep your binoculars ready to spot whales and seabirds who follow in our wake.

Day 5-6: Ungava Bay

Enjoy Fantastic Birdwatching

Pay a visit to uninhabited Akpatok Island, the biggest island in Ungava Bay at over nine hundred square kilometres.

It's named for the akpait (thick-billed murre) that nest on ledges of the lofty cliffs and is home to Canada's largest colony of breeding pairs.

Take a Zodiac cruise to scout the shorelines and any outlying ice, keeping your eyes peeled for polar bears, walrus, and other marine life.

Large and shallow, Ungava Bay is a rich ecosystem and home to a variety of wildlife, including an endangered beluga population.

Day 7: Ungava Peninsula, QC

Hike the Tundra

Explore an area of treeless tundra along the Ungava Peninsula of Nunavik. Delve into its geological wonders, immerse yourself in its rich flora and fauna, and connect with Inuit cultural educators who will guide you through their homeland, leaving a lasting impression.

Enjoy great hiking and a Zodiac cruise with our expedition team, who will provide insightful interpretation every step of the way. As you explore this

Wild Earth Travel
Small Ships, Big Adventures

0800 945 3327 (within New Zealand) | +64 (0) 3 365 1355 | **1800 107 715** (within Australia)

info@wildearth-travel.com | **wildearth-travel.com**



Wild Earth Travel

Small Ships, Big Adventures

wildearth-travel.com

info@wildearth-travel.com

magnificent landscape, keep an eye out for wildlife and listen to Inuit stories that will deepen your connection to the land, leaving you with a lasting sense of fulfillment and renewed appreciation for nature's wonders.

Day 8: Salluit

Receive a Warm Welcome in an Inuit Community

Journey to Salluit, the second northernmost community in Nunavik. With a population of approximately 1,500, this vibrant community offers a unique chance to connect with Inuit culture in the heart of the Canadian Arctic.

Explore local craftsmanship with the opportunity to purchase community-made products such as carvings, jewelry, mittens, and more.

Experience the warm hospitality of the locals as we gather in the community hall, where you'll learn traditions and contemporary ways of life. Take in the stunning surroundings with a scenic hike, exploring the rugged terrain and gaining a deeper understanding of the land and its people.

Day 9: Kinngait (Cape Dorset)

Visit World-Famous Art Studios

Meet the artists and visit the studios that make Kinngait proud--plus, have the opportunity to purchase one-of-a-kind pieces of art!

Have a chance to talk with the old and new generations of outstanding artists, carvers, and printmakers who continue to make Kinngait a proud centre for fine art.

Kinngait was ground zero for the Inuit art market when, in 1959, the West Baffin Eskimo Co-operative was established--the oldest professional Inuit printmaking studio in Canada.

Day 10-11: Hudson Strait

Seek Whales, Seabirds, and Polar Bears

Join the expedition team out on deck while navigating the icy, fast-moving waters of the Hudson Strait.

Search for breathtaking Arctic wildlife--polar bears, walruses, whales, seals,

and seabirds--to capture the perfect photograph. Enjoy hearing from Inuit about the region's wildlife and stunning landscapes as we seek the creatures that inhabit this area.

We'll make the most of every opportunity to explore, whether on foot or by embarking on a Zodiac cruise, amidst breathtaking backdrops.

Day 12-13: Frobisher Bay

Witness Wildlife, Geology, and Ice

Sail through this beautiful bay named for bygone explorer Martin Frobisher and stay on the lookout for wildlife.

Our geologists will have you raving about rocks! Expect compelling scenery and soak up the Arctic splendour.

Day 14: Iqaluit, NU, Canada

Wave a Fond Farewell

Transfer by Zodiac through Iqaluit harbour for your charter flight back home. Iqaluit, at the head of Frobisher Bay, is Nunavut's capital. A population of nearly 8,000 calls the city home. Local attractions include the territorial Legislature, igloo-inspired St. Jude's Cathedral, art shops, and more.

As your journey comes to a close, carry with you the lasting impression of the Arctic's beauty and the richness of its cultures, forever etched in your memories.

Please note:

Itineraries are subject to change.

Wild Earth Travel
Small Ships, Big Adventures

0800 945 3327 (within New Zealand) | +64 (0) 3 365 1355 | **1800 107 715** (within Australia)

info@wildearth-travel.com | **wildearth-travel.com**

Wild Earth Travel

Small Ships, Big Adventures



wildearth-travel.com

info@wildearth-travel.com

YOUR SHIP: OCEAN NOVA

YOUR SHIP:	Ocean Nova
VESSEL TYPE:	Expedition
LENGTH:	73 metres
PASSENGER CAPACITY:	86
BUILT/REFURBISHED:	1992 / 2005

atmosphere on board. Travelling with this small expedition ship offers an entirely different experience and perspective than you can get on a larger and more conventional cruise ship.

Ice Class: Ice 1B, E0 (Hull Ice 1A)



ull Ice 1A)

The ice-strengthened expedition ship Ocean Nova was built in Denmark in 1992 with high ice class to serve Greenland's west coast. In 2004 to 2005 she was completely refurbished and has now a career as a small and comfortable expedition ship. The Ocean Nova accommodates 86 passengers in single, double and triple cabins, all with sea-view and private facilities. The double cabins have either two lower beds or upper and lower beds. The triple cabins have upper and lower beds. In your cabin you will also find a desk with chair and ample storage space for clothes and equipment.

In the dining room you are treated to delicious meals in between landings and in the panorama lounge you can enjoy a drink with a breathtaking view of the surrounding polar landscape. This is where PolarQuest's on board specialists entertain and educate you with lectures on polar biology, history, geology and conservation. There is also a library with panoramic views and a good selection of polar books. On board there is a satellite phone, gym and medical doctor. Passengers are welcome on the bridge around the clock and there is always something to see or search for from the spacious observation decks. The ship has North European officers and there is a friendly and informal

Wild Earth Travel

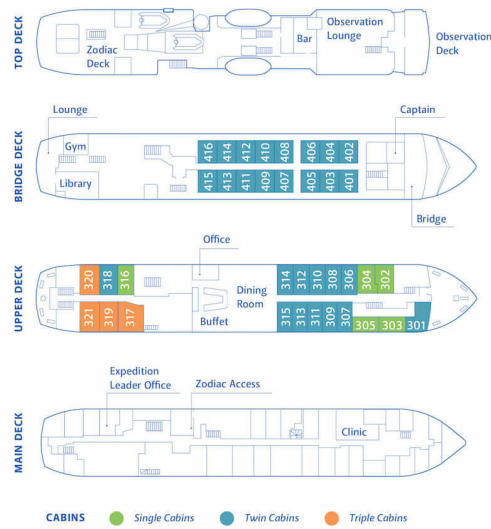
Small Ships, Big Adventures

0800 945 3327 (within New Zealand) | +64 (0) 3 365 1355 | **1800 107 715** (within Australia)

info@wildearth-travel.com | **wildearth-travel.com**



INSIDE YOUR SHIP



Cabin Category 1



Cabin Category 2



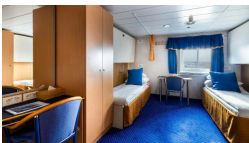
Cabin Category 3



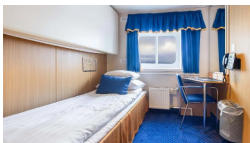
Cabin Category 4



Cabin Category 5



Cabin Category 6





Wild Earth Travel

Small Ships, Big Adventures

wildearth-travel.com

info@wildearth-travel.com

PRICING

02-Aug-2026 to 15-Aug-2026

Cabin Category 1	9995 USD pp
Cabin Category 2	11995 USD pp
Cabin Category 3	13195 USD pp
Cabin Category 4	13995 USD pp
Cabin Category 5	14995 USD pp
Cabin Category 6	19995 USD pp

Optional extras & upgrades

Northbound Charter Flight 1595 USD

Northbound Charter Flight: Toronto, ON to Kangerlussuaq, Greenland.
Early-morning departure.

Southbound Charter Flight 1045 USD

Southbound Charter Flight: Iqaluit, NU to Ottawa, ON. Evening arrival.

Wild Earth Travel
Small Ships, Big Adventures

0800 945 3327 (within New Zealand) | +64 (0) 3 365 1355 | **1800 107 715** (within Australia)

info@wildearth-travel.com | wildearth-travel.com