



Wild Earth Travel

Small Ships, Big Adventures

wildearth-travel.com

info@wildearth-travel.com

AT THE HEART OF THE GREEK ISLANDS LUXURY CRUISE

The Greek Islands, from the Peloponnese to the Cyclades via the Dodecanese, are enchanting, bewitching and captivating. From the sheer coastlines bordered by paradisiacal turquoise waters to the archaeological sites that are as emblematic as they are monumental, let yourself fall under the spell of these jewels of the Aegean Sea. From Athens, set sail aboard L'Austral for an 8-day cruise in the heart of the most beautiful Greek islands.

Throughout your journey, you will benefit from an excursion included per person per port of call, to choose from a selection offered by PONANT. During this cruise, admire the ancestral history of Hydra through its famous monuments and museums, discover the monastery of Saint John and the Cave of the Apocalypse where the last book of the New Testament was revealed to John the Apostle, from Patmos, or admire the sumptuous archaeological sites, from the Temples of Zeus, Apollo and Athena to the Terrace of the Lions, from Delos. The diversity of experiences on offer promises you intense and varied moments (to discover the full range of excursions, go to the itinerary tab).

The diversity of experiences on offer promises you intense and varied moments (to discover the full range of excursions, go to the itinerary tab).

In the Dodecanese archipelago, the island of Patmos, known as "the Jerusalem of the Aegean Sea", reveals itself to offer you a moment suspended between unique landscapes of white-sand beaches and rocky bays.

Planted with forests of cypress trees and olive groves, Symi is bewitching. The shimmering colours of its dwellings and surrounding nature make it a real paradise for those seeking tranquillity and serenity.

You will now head towards the most easterly part of the Cyclades. Amorgos, or the island in the Big Blue film, as it is nicknamed, is a rough gem. Fall under the spell of its volcanic and mountainous landscapes diving into the bordering crystal-clear waters and its paved small streets edged by traditional whitewashed houses.

After an unforgettable cruise in Santorini's captivating caldera, where high cliffs surround the majestic ancient crater engulfed by water in the 2nd millennium BC, you will set sail north west. On Milos, the limestone cliffs and small hidden coves are yours to discover in a soothing atmosphere.

The birthplace of Artemis and Apollo, Delos is rich in archaeological ruins, UNESCO World Heritage Sites, illustrating its prestigious history. A journey back in time almost 2,000 years, between millennia-old heritage and sumptuous panoramas.

L'Austral will then head towards Paros. Nestling in the heart of the Cyclades archipelago, this island reputed for its sublime white marble offers a real concentration of Greek beauty, from

Wild Earth Travel

Small Ships, Big Adventures

0800 945 3327 (within New Zealand) | +64 (0) 3 365 1355 | **1800 107 715** (within Australia)

info@wildearth-travel.com | **wildearth-travel.com**

Wild Earth Travel

Small Ships, Big Adventures

wildearth-travel.com

info@wildearth-travel.com

whitewashed houses to olive groves to ancient monuments.

You will now sail towards the east of the Peloponnese, to reach your final port of call. Here, a gem named Hydra reveals its old-world charm in a stunning setting. With its hidden coves and its mountains topped with monasteries, this jewel of the Saronic Islands completely devoid of cars offers a total change of scenery against the spellbinding blue of the Aegean Sea.

Athens, the mythical city dominated by the Acropolis and its monuments, which form the most extraordinary architectural and artistic ensemble bequeathed to the world by Ancient Greece, will mark the end of this exceptional odyssey.



al odyssey.

ITINERARY

Day 1 ATHENS

The Greek capital city is located on the edge of the Saronic gulf, in the east of the country. It bears a plural name in reference to the first villages that surround the Acropolis. You will be enchanted by the rocky plateau presided by its monuments listed as UNESCO World Heritage. In the city below, you can visit some of the liveliest districts in Athens: Plaka, with its maze of colourful streets, and where, in the evenings the drifting aroma of moussaka and garlic prawns will tickle your taste buds. The National Archaeological museum and the Cycladic Art Museum are also some of the city's key attractions and allow visitors to discover Athens' cultural past.

Day 2 PATMOS

Patmos is one of the legendary must-see islands in the Dodecanese. This is where Saint John resided, presumed author of the last book in the Bible. The cave of the Apocalypse and the Saint John Monastery are dedicated to him. These sites, which are listed by UNESCO as World Heritage, are located at the top of a hillside planted with vines and orchards. On the shore, the crystalline coves of Kambos and Lampi offer absolutely gorgeous swimming areas.

Day 3 SYMI

A simply ravishing gem in the Dodecanese, Symi is located north-west of Rhodes. This island of cypress forests, vineyards and olive orchards, possesses a capital city of the same name that is as colourful as the surrounding countryside. The charm of the port district of Gialos is not to be missed: its quaysides are lined with picturesque houses with multi-coloured facades. You can get to the upper town by car or climb the 500 steps up the Kali Strata ramp. The second option offers superb viewing points of the coast and gorgeous turquoise waters.

Day 4 AMORGOS & SAILING IN THE SANTORINI CALDERA

It's no accident that the island of Amorgos was chosen as a shooting location for Luc Besson's film, The Big Blue. You too will fall under the charm of this island as your ship edges closer. Amorgos is the most easterly island in the Cyclades and stands out for its rocky inlets with crystal-clear water and its

Wild Earth Travel

Small Ships, Big Adventures

0800 945 3327 (within New Zealand) | +64 (0) 3 365 1355 | **1800 107 715** (within Australia)

info@wildearth-travel.com | wildearth-travel.com



Wild Earth Travel

Small Ships, Big Adventures

wildearth-travel.com

info@wildearth-travel.com

small, picturesque villages. This port of call will be your chance to visit one of the prettiest villages in the Cyclades, Chora, and discover its cobbled streets and whitewashed houses overlooked by a castle. Byzantine churches, windmills and courtyards brimming with flowers complete this typical tableau of timeless Greece. Sailing in the waters of Santorini caldera is breathtaking. The gigantic scale of the unique setting, the majesty of the high cliffs surrounds this ancient crater that was flooded in 2000 years before Christ, is one of the highlights of the cruise. From your ship, the colourful whites, greys, reds of the volcanic rocks, the blue of the Aegean Sea and the immaculate perched villages form a unique and marvellous spectacle.

Day 5 ADAMAS, MILOS

Although Milos is especially renowned for the famous statue of Venus found in a field there and now displayed in the Louvre in Paris, this mineral island is also a geological treasure. Its volcanic origin is evident in its breathtaking landscapes and the colours of its cliffs, ranging from pure white to deep red. You'll discover the wild beauty of the shorelines lined with the most beautiful beaches in Greece from a ship deck, and you'll enjoy privileged access to emerald-green coves. Tiny fishing ports like Adamas hide there, with brightly-painted doors and terraces. Milos is a charming port of call in the heart of the Cyclades.

Day 6 DELOS & MYKONOS

This legendary Cyclades island of Delos stands just a few miles southwest of Mykonos. The ceremonial solemnity of this ancient holy sanctuary will not leave you indifferent. The sheer size and importance of this UNESCO World Heritage site which covers over half of the island is thrilling in itself. From the Stoa of Antigonos, the Terrace of the Lions, to the carved marble animal statues, you will make discovery after discovery, against a backdrop of the Aegean stretching to the horizon. The theatre steps on the hillside are a particularly good place from which to enjoy the expansive view. Nicknamed "little Venice", Mykonos is famous for its Alefkandra district where houses are built right on the water's edge. Their multi-coloured loggias are emblematic of this Cyclades island, as are the pelicans and windmills. You can get close up to the birds on the quaysides of the old port. Up on the hillside, you can see the windmill sails turning. In the cobbled streets of the pedestrian centre, bougainvillea bedeck immaculate facades. As you weave in and out of the little streets, snatches of coastline will undoubtedly call you to the island's beaches, the quietest of which can be found on the northern coast.

Day 7 HYDRA

This unusual gem belonging to the Saronic islands is located to the east of the Peloponnese. There are no cars here. Named after the island, the harbour town is layered up the slopes of a mountainous bay. You may be surprised to see beautiful stone mansions. These are traditional here, as are the multi-coloured caiques along the quays. Further along the shore, you will discover the Historical Archives Museum. Collections from Athens National History Museum are exhibited in the elegant villa Koundouriotis.

Day 8 ATHENS

The Greek capital city is located on the edge of the Saronic gulf, in the east of the country. It bears a plural name in reference to the first villages that surround the Acropolis. You will be enchanted by the rocky plateau presided by its monuments listed as UNESCO World Heritage. In the city below, you can visit some of the liveliest districts in Athens: Plaka, with its maze of colourful streets, and where, in the evenings the drifting aroma of moussaka and garlic prawns will tickle your taste buds. The National Archaeological museum and the Cycladic Art Museum are also some of the city's key attractions and allow visitors to discover Athens' cultural past.

Please Note:

Itineraries are subject to change.

Wild Earth Travel

Small Ships, Big Adventures

0800 945 3327 (within New Zealand) | +64 (0) 3 365 1355 | **1800 107 715** (within Australia)

info@wildearth-travel.com | **wildearth-travel.com**



Wild Earth Travel

Small Ships, Big Adventures

wildearth-travel.com

info@wildearth-travel.com

YOUR SHIP: LE BOREAL

YOUR SHIP:	Le Boreal
VESSEL TYPE:	Luxury Expedition / Cruise Ship
LENGTH:	142 meters
	264 (in twin cabins, 200 in
PASSENGER CAPACITY:	Antarctica)
BUILT/REFURBISHED:	2011

A superb mega-yacht with 132 cabins, she is the fruit of the expertise of the Italian Fincantieri shipyard and French sophistication, as interpreted by designer Jean-Philippe Nuel. Le Boreal remains faithful to our philosophy - to create a unique atmosphere, a subtle blend of luxury, intimacy and well-being. Superior materials, discreet elegance and a tasteful decor combined with exterior and interior lines to reflect a nautical mood, subtly revisited. On board, soothing neutral tones are enlivened by splashes of red, our signature theme linking tradition and innovation to create personal touches in the spirit of a "private yacht".

Cuisine

Loyal to the great French tradition, the haute cuisine on board is worthy of the finest restaurants, where discreet, attentive service is the hallmark.

Our two restaurants welcome you for breakfasts, lunch and dinner. The Gastronomic Restaurant, with a capacity of 268 persons, is situated on Le Liberte Deck and serves you French and international cuisine accompagnied by fine wine. On the Grill Restaurant, you will have the opportunity to eat outside

and enjoy buffet lunch and themed dinner.

Life On Board

Whether you want to join other guests in the theatre or games area (Wii™ consoles, etc), or relax on your own in a quiet corner of the library, Le Boreal has been designed to meet the needs of every guest.

Everything has been done to preserve the independence of each guest to suit their personal tastes: lounges for lectures and shows, a spa in partnership with Carita™, but also more intimate spaces such as the library and internet corner. Comfortable cabins, nearly all with private balcony, are available for families either as triples or as communicating cabins. There is also a games area with Wii™ consoles, children's menus, and a baby-sitting service. Just as if you were on a private yacht, your time is your own to do as you please.

Fitted with the latest equipment (Kinesis Wall, running machine) and in partnership with the famous Carita™ brand, the Beauty Centre on Le Boreal welcomes you for some unforgettable moments of relaxation and pampering (beauty treatments, hairdresser, hammam, balneotherapy).

Wild Earth Travel

Small Ships, Big Adventures

0800 945 3327 (within New Zealand) | +64 (0) 3 365 1355 | **1800 107 715** (within Australia)

info@wildearth-travel.com | **wildearth-travel.com**



Wild Earth Travel

Small Ships, Big Adventures

wildearth-travel.com

info@wildearth-travel.com



eotherapy).



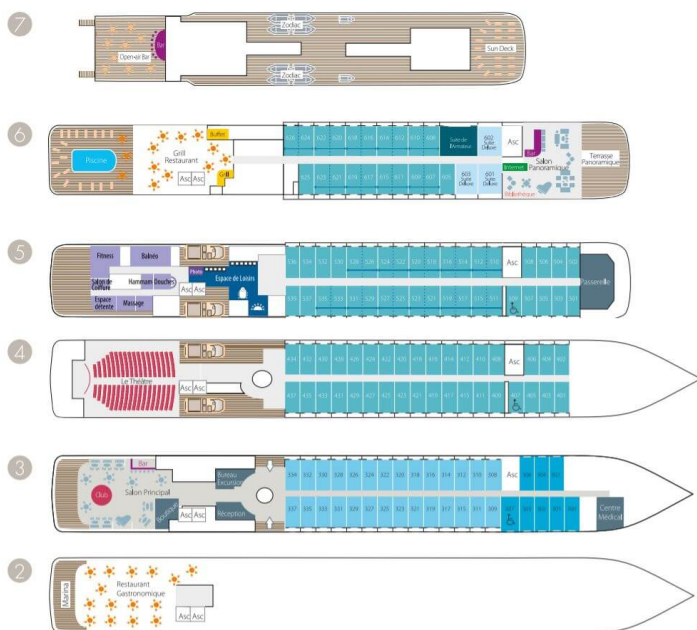
Wild Earth Travel

Small Ships, Big Adventures

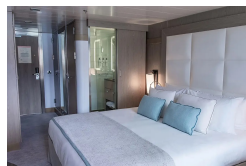
0800 945 3327 (within New Zealand) | +64 (0) 3 365 1355 | **1800 107 715** (within Australia)

info@wildearth-travel.com | **wildearth-travel.com**

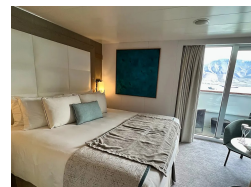
INSIDE YOUR SHIP



Deluxe Stateroom



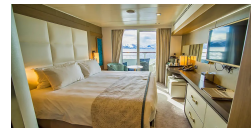
Deluxe Suite



Prestige Deck 4



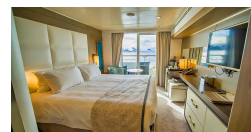
Prestige Deck 5



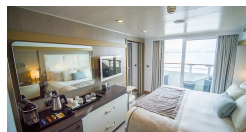
Prestige Deck 5 Suite



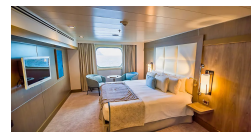
Prestige Deck 6



Prestige Deck 6 Suite



Superior Stateroom





Wild Earth Travel

Small Ships, Big Adventures

wildearth-travel.com

info@wildearth-travel.com

PRICING

10-Jul-2026 to 17-Jul-2026

Superior Stateroom	6590 AUD pp
Deluxe Stateroom	6950 AUD pp
Prestige Deck 4	7310 AUD pp
Prestige Deck 5	7670 AUD pp
Prestige Deck 6	8100 AUD pp
Deluxe Suite	13080 AUD pp
Prestige Deck 5 Suite	14520 AUD pp
Prestige Deck 6 Suite	14880 AUD pp

ADDITIONAL CHARGES:

Port Taxes & Fees 520 AUD pp



Wild Earth Travel
Small Ships, Big Adventures

0800 945 3327 (within New Zealand) | +64 (0) 3 365 1355 | **1800 107 715** (within Australia)

info@wildearth-travel.com | **wildearth-travel.com**



Wild Earth Travel

Small Ships, Big Adventures

wildearth-travel.com

info@wildearth-travel.com

SPECIAL OFFERS

Online prices reflect the current brochure fare savings of up to 30%. Prices may change based on demand. Terms and conditions apply. This special offer is subject to availability. Please contact us for more details.

Wild Earth Travel

Small Ships, Big Adventures

0800 945 3327 (within New Zealand) | +64 (0) 3 365 1355 | **1800 107 715** (within Australia)

info@wildearth-travel.com | **wildearth-travel.com**