



Wild Earth Travel

Small Ships, Big Adventures

wildearth-travel.com

info@wildearth-travel.com

GREENLAND & WILD LABRADOR: A TORNGAT MOUNTAINS ADVENTURE CRUISE

Embark on a breathtaking journey that takes you through some of the most remote and awe-inspiring regions of Greenland and Canada. Begin your adventure in Kangerlussuaq, Greenland, sailing through the majestic fjords surrounded by towering glaciers and mountains. Witness the captivating natural beauty of Kangerlussuatsiaq Fjord, aptly named the "Fjord of Eternity," with its calving glaciers, cascading waterfalls, and bird cliffs. Discover the vibrant culture of Nuuk, Greenland's capital, where traditional Inuit heritage meets modern city life, and explore the Greenland National Museum, historic harbours, and charming cafes. As you cross the Davis Strait, engage with Inuit culture through interactive workshops and performances while keeping an eye out for whales and seabirds.

Continuing into Canada, immerse yourself in the raw wilderness of Torngat Mountains National Park, where dramatic tundra landscapes and fjords await exploration by hiking and Zodiac cruises. Visit the historic Moravian mission site of Hebron and connect with poignant stories of the past, followed by a warm welcome in the Inuit community of Nain. Discover the rich cultural history of L'Anse aux Meadows, the only authenticated Viking settlement in North America, and explore Newfoundland's picturesque coastline, dotted with quaint fishing villages and stunning vistas. Conclude your adventure in St. John's, Newfoundland, a vibrant cultural hub where you can photograph colourful houses, historic landmarks, and the iconic Signal Hill before bidding farewell to this unforgettable journey.



le journey.

ITINERARY

Day 1: Kangerlussuaq, Greenland

Cross the Arctic Circle

Begin your journey by sailing out of Kangerlussuaq Fjord (Søndre Strømfjord), a 190-kilometre-long fjord surrounded by mountains and glaciers.

Cross the Arctic Circle on your way and spend time on deck watching for

Wild Earth Travel
Small Ships, Big Adventures

0800 945 3327 (within New Zealand) | +64 (0) 3 365 1355 | **1800 107 715** (within Australia)

info@wildearth-travel.com | **wildearth-travel.com**



aurora borealis.

Kangerlussuaq, the settlement at the head of the fjord, is a former US Air Force base.

After your charter flight from Toronto, ON, you'll transfer to the ship by Zodiac.

Day 2: Kangerlussuaq Fjord (Evighedsfjorden)

Take a Zodiac Cruise at the Foot of a Glacier

Kangerlussuaq means "the rather big fjord" in Greenlandic, while the Danish name Evighedsfjorden translates to "the fjord of eternity," underscoring its vastness and seemingly never-ending nature.

See why Kangerlussuaq Fjord lives up to its name and marvel at this complex coastal waterway that includes calving glaciers, sheer bird cliffs, and streams cascading against a towering mountain backdrop.

Explore this sublime glacial landscape by ship and by Zodiac.

The waters here are relatively warm, due to the West Greenland Current and the subarctic location.

Day 3: Nuuk

Visit Museums, Shops, and Cafes

Stop in at vibrant Nuuk, the capital of Greenland.

Visit the Greenland National Museum, one of the city's many outstanding features, where the world-famous Qilakitsoq mummies rest.

The old harbour includes many buildings dating from Danish colonial days, while contemporary Nuuk is known for art, shopping, pubs, and cafes.

Day 4: At Sea – Davis Strait

Learn From Inuit in Their Homeland

Deepen your understanding of the environment, cultures, and history of the region as we sail across the Davis Strait towards Labrador. Get the privileged opportunity to engage with and learn from Inuit in their homeland.

Enjoy workshops and presentations, watch a documentary, and get out on deck! Try your hand at athletic feats during an interactive cultural performance of Inuit games.

Through shared experiences and interactions, develop a deep appreciation for the culture and gain a connection to the stunning landscapes we traverse.

Keep your binoculars ready to spot whales and seabirds who follow in our wake.

Day 5-8: Torngat Mountain Range, NL, Canada

Hike the Mountainous Tundra and Spot Wildlife

Spend four days exploring an area of treeless, mountainous tundra in Torngat Mountains National Park, where some of Canada's highest peaks east of the Rockies are found.

Enjoy your time hiking, visiting archaeological sites, and Zodiac cruising. Here, Inuit of Nunatsiavut will be your guides in their spiritual homeland.

Inuit of Nunavik and Nunatsiavut play a key role as partners in the management of Torngat Mountains National Park, and many see the park as a portal for better understanding of Inuit culture.

The word Torngat is derived from the Inuttut word tongait, meaning "place of spirits," where Inuit shamans travelled to connect with higher powers. It is not hard, even for a visitor, to feel the power of the place.

Marvel at the gorgeous fjords, landscapes ablaze with autumn colours, and wonderful wildlife sighting opportunities, including the possibility of both polar and black bears.

Day 9: Hebron

Ponder Poignant History



Step back in time to the historical site of Hebron, which preserves a Moravian Mission station dating from the 1830s.

Call in at the old church, where Inuit who resided here in 1959 learned of their forced relocation.

Take a moment to let history sink in and read the plaque that commemorates this history and the apology to people affected by the relocations, issued by the government of Newfoundland and Labrador in 2005.

Listen to the stories shared by our guides and meet former Hebron residents and their kin who continue to visit the site and to hunt and fish nearby.

Day 10: Nain

Experience an Inuit Hamlet
Visit Nain, the most northerly community in Labrador and the administrative capital of Nunatsiavut.

Stop in at the historic Moravian church, enjoy the brass band, and visit Illusuak, the stunning cultural centre.

Expect a warm welcome and the opportunity to peruse arts and handicrafts at this dynamic visit.

This will be your first chance to see trees since the start of your journey!

Day 11-12: The Labrador Coast

Enjoy Hiking and Zodiac Cruises
As we continue south the rugged peaks of the North give way to rolling, forested hills and tranquil inlets. Hundreds of rocky islets interrupt the open Labrador Sea, offering some shelter for vibrant Inuit communities where traditions endure and stories flow with the tides.

The modern-day cultural mix of this area makes for a rich blend of stories about both different and shared values, resilience, and the universal love of the land and sea.

Conditions allowing, we'll embark on expedition landings and Zodiac cruises led by our expedition team. Their expert guidance ensures both your safety and a deeper appreciation of the coastal barrens, boreal forests, wetlands, and rugged shorelines of this remarkable region.

Come with an open heart, leave with a new understanding of these magnificent Labrador shores.

Day 13: L'Anse aux Meadows

Immerse Yourself in Viking Archaeology
Wander through the reconstructed Viking habitation at L'Anse aux Meadows, a UNESCO World Heritage Site and the only authenticated Norse settlement in North America.

Learn more about the archaeological remains that date to approximately 1000 CE, and how--amazingly--the site was first found here in 1960 by a close reading of the Viking sagas.

Be sure to visit the superb interpretation centre and meet the actors in period costumes as you make your way through the reconstructed Norse-style sod buildings. This is a must-see for any visitor to Newfoundland and Labrador!

Day 14: Northeast Newfoundland

Experience Newfoundland's Legendary Charm
The northeast coast of Newfoundland is known for the dozens of picturesque villages that dot its rocky shores, and we'll find harbour in one of these unique communities. We look forward to a characteristically warm Newfoundland welcome upon our arrival. Photographers will have their work cut out for them capturing the special charm of classic island architecture.

Day 15: St. John's, NL, Canada

Wave a Fond Farewell
Welcome to St. John's--the vibrant capital of Newfoundland and Labrador.

Complete your journey by sailing into historic St. John's harbour, looking out for Signal Hill as you enter the world-famous Narrows.



Photograph the charming houses of the Battery, always a hit with shutterbugs.

Say your farewells in this cultural hotspot and what is sometimes called North America's oldest city.

Please note:

Itineraries are subject to change.



0800 945 3327 (within New Zealand) | +64 (0) 3 365 1355 | **1800 107 715** (within Australia)

info@wildearth-travel.com | wildearth-travel.com



YOUR SHIP: EXPLORIS ONE

YOUR SHIP:	Exploris One
VESSEL TYPE:	Expedition Cruise
LENGTH:	108 metres / 354 feet
PASSENGER CAPACITY:	144
BUILT/REFURBISHED:	1989/2018/2023

Capacity for 144 passengers

Purpose-built for expedition travel

Design combines bold exploration with relaxed comfort and elegance

Well-suited for polar, temperate, and tropical environments

Life on Board

Food and Drink

Aboard the Exploris One, dining is an adventure! Top chefs craft dishes blending local flavours with international favourites, served in cozy open-seating spaces--indoors or al fresco. Start your day with hearty breakfasts and lunches to fuel your explorations. At dinner, savour globally inspired a la carte meals catering to seafood lovers, vegetarians, and everyone in between--don't forget the freshly made desserts! Dietary needs? Our team's got you covered with advance notice. With 24/7 beverages, from specialty coffee to fine wine, from beer to cocktails, every bite and sip celebrates your journey. Bon appetit!

Life on Board

Wake up aboard the Exploris One, where breathtaking ocean views from your cabin spark your inner poet. This intimate ship,

with space for 144 adventurers is designed to take you to the planet's most remote corners in style. Blending cozy comforts with epic exploration, it's perfect for you thrill-seekers that don't want to leave your barista behind. Learn from our expert expedition team, known for their deep knowledge and quirky charm. Spot seabirds from panoramic decks, enjoy inspiring talks, hands-on workshops, live music, or simply unwind in the ship's welcoming spaces.

From Ship to Shore

Heading ashore on the Exploris One is part of the adventure! With a fleet of trusty Zodiacs, you'll easily reach remote beaches, wildlife hotspots, and stunning coastlines. Designed for exploration, these versatile crafts get you right into the action. Our expert team ensures smooth, safe transfers, so you can focus on the thrill of discovery. Whether stepping onto untouched shores or cruising past playful seals, the journey is as exciting as the destination. On the Exploris One, every shore excursion is an adventure waiting to unfold!

Facilities

The Explorer's Table - Grand Restaurant

Enjoy exceptional dining in a spacious setting where gourmet meals and regional specialties are served with care and creativity.

The Outside Grill

Savour fresh-grilled favourites while taking in stunning views and the invigorating sea breeze on this open-air deck dining space.

Learning Lounge

Engage with experts and fellow travellers in this comfortable venue designed for insightful presentations and enriching talks.

Wild Earth Travel

Small Ships, Big Adventures

wildearth-travel.com

info@wildearth-travel.com

Main Lounge

Relax and socialize in this welcoming hub, perfect for unwinding, sharing stories, or enjoying evening entertainment.

Observation Lounge

Take in sweeping views and quiet contemplation in this serene space.

Fitness Centre

Stay active in the fully equipped fitness area, featuring modern equipment and ample space to maintain your workout routine while at sea.

Sauna

Recharge and unwind in the soothing warmth of our on-board sauna, perfect after a day of exploration.

Massage Room

Massages offered to provide relaxation and comfort, with appointments available throughout each journey.

Two Outdoor Jacuzzis

Soak in warm, bubbling waters while enjoying expansive views and refreshing ocean breezes.

Gift Shop

Browse a selection of unique items and essentials, perfect for souvenirs or travel needs.

Additional Facilities

Panoramic bridge

Bridge deck

Elevators to all decks

Steam Room

Complimentary launderette

Reception

Ready room

Medical centre



ical centre

Wild Earth Travel

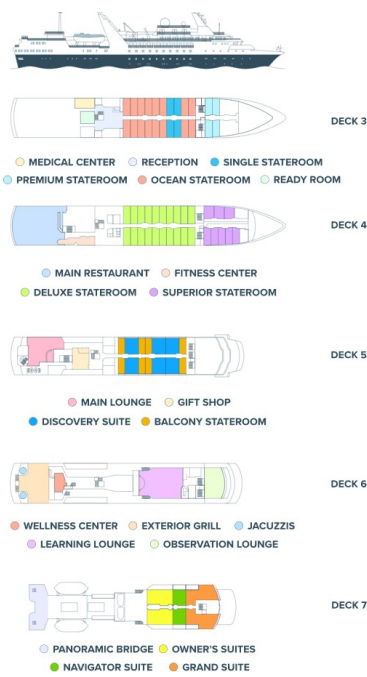
Small Ships, Big Adventures

0800 945 3327 (within New Zealand) | +64 (0) 3 365 1355 | **1800 107 715** (within Australia)

info@wildearth-travel.com | **wildearth-travel.com**



INSIDE YOUR SHIP



Cabin Category 1



Cabin Category 2



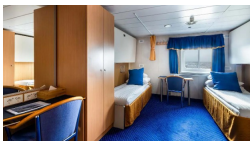
Cabin Category 3



Cabin Category 4



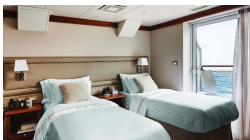
Cabin Category 5



Cabin Category 6



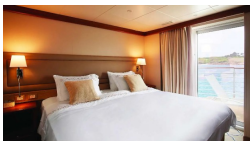
Cabin Category 7



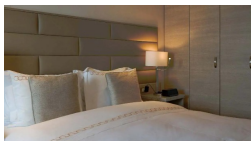
Cabin Category 8



Cabin Category 9



Cabin Category A





Wild Earth Travel

Small Ships, Big Adventures

wildearth-travel.com

info@wildearth-travel.com

PRICING

28-Aug-2026 to 11-Sep-2026

Cabin Category 1	11995 USD pp
Cabin Category 2	13995 USD pp
Cabin Category 3	15195 USD pp
Cabin Category 4	15995 USD pp
Cabin Category 5	16995 USD pp
Cabin Category 6	22795 USD pp

27-Sep-2026 to 11-Oct-2026

Cabin Category 1	15995 USD pp
Cabin Category 2	16495 USD pp
Cabin Category 3	16995 USD pp
Cabin Category 4	17895 USD pp
Cabin Category 5	18895 USD pp
Cabin Category 6	20395 USD pp
Cabin Category 7	20895 USD pp
Cabin Category 8	22395 USD pp
Cabin Category A	22695 USD pp
Cabin Category 9	24195 USD pp

Optional extras & upgrades

Northbound Charter Flight 1595 USD

Northbound Charter Flight: Toronto, ON, Canada to Kangerlussuaq, Greenland.
Early-morning departure.

Wild Earth Travel
Small Ships, Big Adventures

0800 945 3327 (within New Zealand) | +64 (0) 3 365 1355 | **1800 107 715** (within Australia)

info@wildearth-travel.com | wildearth-travel.com