

Wild Earth Travel

Small Ships, Big Adventures

wildearth-travel.com

info@wildearth-travel.com

GREEN SHORES: EXPLORING THE BAY OF BISCAY AND IBERIAN COASTLINE

Experience the rare luxury of having all the time in the world, during a summer holiday on the Atlantic coast. Whether during a stopover or an overnight stay, enjoy the fresh air and take a stroll through the narrow streets brimming with history, explore the green landscapes on foot or by bike, and marvel at art collections housed in boldly designed museums. Between unspoilt coastlines, iconic pilgrimage sites, and towns full of character, such as Saint-Jean-de-Luz, Santander and A Coruña, time stands still to celebrate the art of living, good food, history and the beauty of the Gascon and Iberian horizons. From the Basque Country to Cantabria, Asturias and Galicia, and on to Portugal, summer will unfold slowly, punctuated by cultural discoveries and outdoor activities along the legendary Santiago de Compostela trails.



ITINERARY

Day 1 - Bordeaux

Bordeaux stretches along the banks of the Garonne river, in South-West France. Its rich wine tradition makes it the world capital of wine. Let yourself be carried away by the history of the Port de la Lune, made a UNESCO World Heritage site for its prestigious classical architecture. On the famous Place de la Bourse, the past and the present unite: here you can observe the majestic old buildings reflected in the contemporary Miroir d'eau creation.

Day 2 - Sailing on the Gironde

Day 3 - Saint-Jean-de-Luz

Wild Earth Travel

Small Ships, Big Adventures

0800 945 3327 (within New Zealand) | +64 (0) 3 365 1355 | 1800 107 715 (within Australia)

info@wildearth-travel.com | wildearth-travel.com



Wild Earth Travel

Small Ships, Big Adventures

wildearth-travel.com

info@wildearth-travel.com

A renowned seaside resort in the South West of France, Saint-Jean-de-Luz is a picturesque and authentic town with a rich history. In particular, King Louis XIV married Maria Teresa in the famous Saint Jean the Baptist church in 1660. The seafront unveils stunning views, between the Basque architecture and the Cantabrian Sea. An unforgettable bay, which was frequented in the 17th century by privateers and wealthy ship-owners.

Day 4 - Santander

Facing the Bay of Biscay, its backdrop a natural setting that combines sea and mountain, Santander rolls out along a huge bay on the northern coast of the peninsula. A city of maritime tradition, it has a century-old touristic vocation. It is home to two treasures that are UNESCO World Heritage Sites: a part of the Way of Saint James and the Cave of Altamira. Its Prehistory and Archaeology Museum houses one of the most valuable Palaeolithic collections in Europe and the Maritime Museum of Cantabria is one of the most comprehensive museums in Spain dedicated to the sea. Its beaches with peaceful waters, protected from the wind, offer one of the most beautiful sea fronts with a succession of Belle Époque buildings.

Day 5 - Aviles

Now the third largest city in the Principality of Asturias, Aviles has managed to retain all its charm. Its old town, declared a Historic-Artistic Site, contains architectural marvels such as the pedestrianised streets Calle Galiana and Calle Rivero, the Plaza de España and its town hall, and the Church of Sabugo, dating from the 13th century. Between palaces - including the very beautiful Valdecarzana and Camposagrado palaces -, shady arcades, fountains and other historical monuments, fall in love with this city and its unique heritage.

Days 6 - 7 La Coruña

La Coruña stands on a peninsula in north-west Spain. As you enter the harbour, you can see the imposing Castillo de San Anton, which houses archaeological collections from Galicia. In the old town, you'll travel back in time as you meander through the streets from the medieval church of Santiago to the contemporary Domus building, a museum dedicated to human biology and psychology. Brightly coloured tramways connect to the waterfront, on one side, Riazor beach, and on the other, the Hercules tower: this lighthouse

overlooking the Atlantic, is a UNESCO World Heritage site, listed for its history dating back to Antiquity.

Day 8 - Vigo - Santiago de Compostela

Nestling on the Atlantic coast, in the south of Galicia, the former fishing port of Vigo is now the region's largest municipality. Its old town, more commonly known as O Berbes, will unveil its many historical monuments and the unusual architectural style of its homes. Off the coast, the Cies Islands, declared a Nature Reserve and located in the Atlantic Islands of Galicia National Park, offer truly splendid landscapes and exceptional biodiversity. Further north, make sure you visit Santiago de Compostela, which welcomes many pilgrims from all over the world every year. Designated a UNESCO World Heritage Site, its historical centre has significant architectural heritage.

Day 9 - Leixões - Porto

Located at the mouth of the Douro River, the port of Leixoes lies less than 10 kilometres from Porto. A UNESCO World Heritage Site, the historic centre of Porto is worth a visit for its famous Ribeira district, the metallic silhouette of the Dom-Luis bridge looming over its ancient houses, its richly decorated Baroque churches and its national Soares dos Reis museum. The Sao Bento station is also interesting for its typically Portuguese decoration, using Azulejos, blue square ceramic tiles decorated with geometric patterns or figurative scenes.

Day 10 - Lisbon

Portugal's capital city located on the banks of the Tagus, only a few kilometres from the Atlantic coast, is a city of exceptionally rich cultural diversity. At the mouth of the river harbour, impose two UNESCO World Heritage monuments, Jeronimos monastery and Belem tower. The Alfama hillside is also worth visiting: known for its fado bars and its Moorish streets, this district is the oldest one of the city and one of the most typical. Not far from there, Chiado's elegant streets are home to big fashion labels and are an invitation to a bit of of luxury shopping.

Please note:

Wild Earth Travel

Small Ships, Big Adventures

0800 945 3327 (within New Zealand) | +64 (0) 3 365 1355 | **1800 107 715** (within Australia)

info@wildearth-travel.com | wildearth-travel.com



Wild Earth Travel

Small Ships, Big Adventures

wildearth-travel.com

info@wildearth-travel.com

Itineraries are subject to change.

Wild Earth Travel
Small Ships, Big Adventures

0800 945 3327 (within New Zealand) | +64 (0) 3 365 1355 | **1800 107 715** (within Australia)

info@wildearth-travel.com | **wildearth-travel.com**



Wild Earth Travel

Small Ships, Big Adventures

wildearth-travel.com

info@wildearth-travel.com

YOUR SHIP: LE BOREAL

YOUR SHIP:	Le Boreal
VESSEL TYPE:	Luxury Expedition / Cruise Ship
LENGTH:	142 meters
	264 (in twin cabins, 200 in
PASSENGER CAPACITY:	Antarctica)
BUILT/REFURBISHED:	2011

A superb mega-yacht with 132 cabins, she is the fruit of the expertise of the Italian Fincantieri shipyard and French sophistication, as interpreted by designer Jean-Philippe Nuel. Le Boreal remains faithful to our philosophy - to create a unique atmosphere, a subtle blend of luxury, intimacy and well-being. Superior materials, discreet elegance and a tasteful decor combined with exterior and interior lines to reflect a nautical mood, subtly revisited. On board, soothing neutral tones are enlivened by splashes of red, our signature theme linking tradition and innovation to create personal touches in the spirit of a "private yacht".

Cuisine

Loyal to the great French tradition, the haute cuisine on board is worthy of the finest restaurants, where discreet, attentive service is the hallmark.

Our two restaurants welcome you for breakfasts, lunch and dinner. The Gastronomic Restaurant, with a capacity of 268 persons, is situated on Le Liberte Deck and serves you French and international cuisine accompagnied by fine wine. On the Grill Restaurant, you will have the opportunity to eat outside

and enjoy buffet lunch and themed dinner.

Life On Board

Whether you want to join other guests in the theatre or games area (Wii™ consoles, etc), or relax on your own in a quiet corner of the library, Le Boreal has been designed to meet the needs of every guest.

Everything has been done to preserve the independence of each guest to suit their personal tastes: lounges for lectures and shows, a spa in partnership with Carita™, but also more intimate spaces such as the library and internet corner. Comfortable cabins, nearly all with private balcony, are available for families either as triples or as communicating cabins. There is also a games area with Wii™ consoles, children's menus, and a baby-sitting service. Just as if you were on a private yacht, your time is your own to do as you please.

Fitted with the latest equipment (Kinesis Wall, running machine) and in partnership with the famous Carita™ brand, the Beauty Centre on Le Boreal welcomes you for some unforgettable moments of relaxation and pampering (beauty treatments, hairdresser, hammam, balneotherapy).

Wild Earth Travel

Small Ships, Big Adventures

0800 945 3327 (within New Zealand) | +64 (0) 3 365 1355 | **1800 107 715** (within Australia)

info@wildearth-travel.com | **wildearth-travel.com**






Wild Earth Travel

Small Ships, Big Adventures

wildearth-travel.cominfo@wildearth-travel.com



eotherapy).



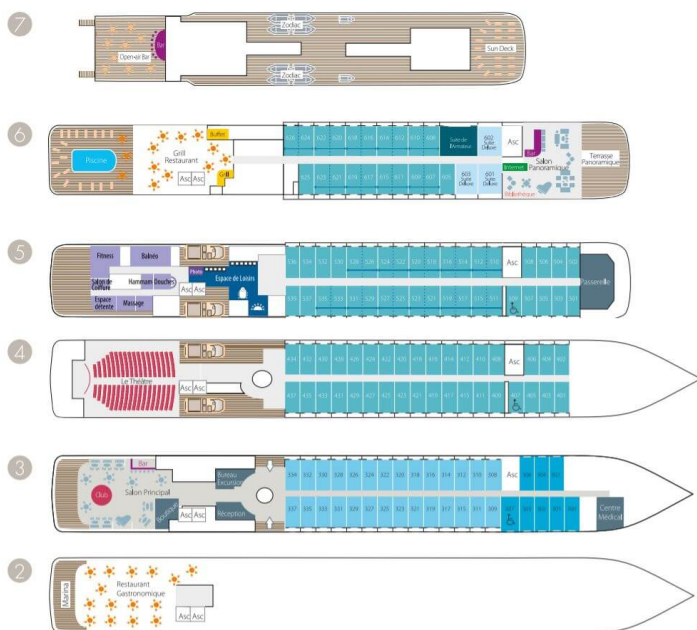
Wild Earth Travel

Small Ships, Big Adventures

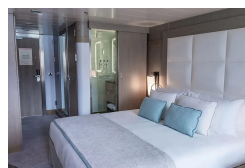
0800 945 3327 (within New Zealand) | +64 (0) 3 365 1355 | **1800 107 715** (within Australia)

info@wildearth-travel.com | wildearth-travel.com

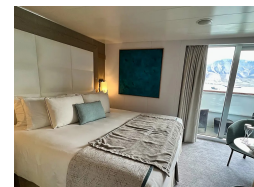
INSIDE YOUR SHIP



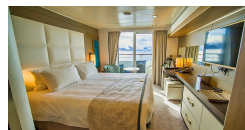
Deluxe Stateroom



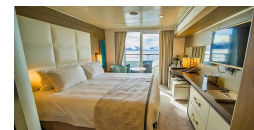
Deluxe Suite



Prestige Deck 4



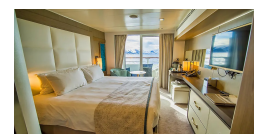
Prestige Deck 5



Prestige Deck 5 Suite



Prestige Deck 6



Prestige Deck 6 Suite



Superior Stateroom





Wild Earth Travel

Small Ships, Big Adventures

wildearth-travel.com

info@wildearth-travel.com

PRICING

15-Aug-2027 to 24-Aug-2027

Superior Stateroom	7870 AUD pp
Deluxe Stateroom	8530 AUD pp
Prestige Deck 4	9460 AUD pp
Prestige Deck 5	9920 AUD pp
Prestige Deck 6	10480 AUD pp
Deluxe Suite	14570 AUD pp
Prestige Deck 5 Suite	19680 AUD pp
Prestige Deck 6 Suite	20700 AUD pp

Wild Earth Travel

Small Ships, Big Adventures

0800 945 3327 (within New Zealand) | +64 (0) 3 365 1355 | **1800 107 715** (within Australia)

info@wildearth-travel.com | **wildearth-travel.com**



Wild Earth Travel

Small Ships, Big Adventures

wildearth-travel.com

info@wildearth-travel.com

SPECIAL OFFER

Online prices reflect the current brochure fare savings of up to 30%. Prices may change based on demand. Terms and conditions apply. This special offer is subject to availability. Please contact us for more details.

Wild Earth Travel

Small Ships, Big Adventures

0800 945 3327 (within New Zealand) | +64 (0) 3 365 1355 | **1800 107 715** (within Australia)

info@wildearth-travel.com | **wildearth-travel.com**