



# Wild Earth Travel

*Small Ships, Big Adventures*

[wildearth-travel.com](http://wildearth-travel.com)

[info@wildearth-travel.com](mailto:info@wildearth-travel.com)

## GREAT LAKES: UNFORGETTABLE EXPERIENCES ON ALL FIVE GREAT LAKES

Pioneering spirit and a great sense of freedom come together on the Great Lakes of North America. Discover this natural wonder - consisting of five connected lakes - and unveil the secrets of history in an "ocean" amidst the wilderness.



### ITINERARY

Sat, 07.08.2027 Toronto/Lake Ontario/Canada

Departure 22.00 hrs

Sun, 08.08.2027 Lock adventures in the Welland Canal/Canada

Daytime passage through eight locks  
Cruise on Lake Erie

Filled with the same passionate spirit of discovery that led the first settlers to these regions, the adventure of navigating the locks of the Welland Canal lies ahead of you. The approximately 45 km (28 mi.) long waterway, which opened in 1932, connects Lake Ontario with Lake Erie. Your small expedition ship features retractable bridge wings so that it can pass through the locks between the lakes. These feats of nautical brilliance are beyond the capabilities of most ships. Eight locks, around 20 bridges and a difference in altitude of almost 100 m (328 ft) - a lock lift comparable to the height of the Niagara Falls. This route demands millimetre precision from the captain and crew: the locks are only 2.5 m (8.2 ft) wider than the ship with a beam of 22 m (72 ft). Follow the

Wild Earth Travel

*Small Ships, Big Adventures*

0800 945 3327 (within New Zealand) | +64 (0) 3 365 1355 | 1800 107 715 (within Australia)

[info@wildearth-travel.com](mailto:info@wildearth-travel.com) | [wildearth-travel.com](http://wildearth-travel.com)



exciting manoeuvres on the many open deck areas, with knowledgeable commentary from your experts.

#### [Mon, 09.08.2027 Windsor/Detroit River](#)

07.30 - 19.00 hrs

History and adventure come together as you cruise on Detroit River and reach the Canadian city of Windsor. It tells the story of industrialisation in just as fascinating way as Detroit, the former "Motor City", on the opposite side of the river in the United States. Discover the stories behind the skylines and landscapes. Your experts on board are your "navigators" with insider knowledge that remains hidden from others. For example, learn exciting things about the rise, fall and architectural diversity of Detroit, which is now emerging again. What will your personal American Dream of discovery be? The choice is yours: go on interesting excursions\* or take a walk along the Waterfront Trail through the city districts of Windsor.

#### [Tue, 10.08.2027 Tobermory/Lake Huron](#)

13.00 - 19.00 hrs

During your cruise across Lake Huron, you will reach the small fishing village of Tobermory. The picturesque town is located in the middle of the protected Fathom Five National Marine Park and invites you to stroll down and linger on its harbour promenade with local arts and crafts shops, cafes and restaurants. Along the coast, dramatic cliffs and towering monoliths rise out of the water, interspersed with caves and lighthouses. The sight of small coves with their turquoise water will make you think you're in the Caribbean. Green forests, home to black bears, white-tailed deer and hundreds of other animals, are abundant close to the shore. In addition, around 40 species of wild orchids can be found here. A stage of the Bruce Trail offers a variety of landscapes and spectacular views of Georgian Bay. A true paradise for hiking lovers, the region offers a variety of trails for activities that will be enriched by your experts' knowledge of natural history. There is something for everyone here - a must for nature and outdoor lovers.

#### [Wed, 11.08.2027 Parry Sound](#)

08.00 - 18.00 hrs

The charming town of Parry Sound is located in the heart of Georgian Bay in an archipelago with Scandinavian allure. In this area, which has been declared a UNESCO Biosphere Reserve, some 30,000 islands lie close together. The scenic approach through a small lagoon brings you ashore. It is the ideal place for many outdoor activities such as canoeing, kayaking and hiking. You can explore the shore on foot along the Marine Walking Trails, with captivating views of the cliffs and lake. With luck, you might also catch a glimpse of the wildlife of Georgian Bay, which is sometimes referred to as the sixth Great Lake. The incomparable feeling of freedom and discovery is what makes the region around Parry Sound so unique.

#### [Thu, 12.08.2027 Killamey](#)

07.00 - 18.00 hrs

The quaint town of Killamey, with a population of barely 500, has its Irish roots in its name. Just imagine how overwhelmed the first settlers and trappers must have felt here by the vastness and the sense of freedom. It is Ontario's little secret in the midst of a colourful wilderness: from the white quartzite of the mountains to the pink granite of the rocks and the indigo blue of the lake. An expedition area that is second to none. An invitation for you to take walks and linger. From the promenade, a hiking trail leads to the region's landmark, the Killamey Lighthouse. Or take the shuttle bus to Killamey Provincial Park for hikes with your experts to gain a deeper understanding of this untouched wilderness. The calm waters here also offer the opportunity to enjoy Georgian Bay on a Zodiac ride with beautiful scenery and good chances for wildlife sightings - with a bit of luck, you'll see cormorants, Canada geese and bald eagles.

#### [Fri, 13.08.2027 Lock passage through the Sault Ste. Marie Canal](#)

Your lock passage through the Sault Ste. Marie Canal is like a journey through time. While you watch the captain and crew manoeuvre the ship through the lock gates, experts on board will tell you all about the history of the canal. The historic Power House, with its original 19th-century machinery, is a reminder that it was once the world's first power-operated lock. Even today, the Soo Locks are still the largest lock system in the world and a masterpiece of engineering. As you stand on deck, the 2,000-year-old culture of the



# Wild Earth Travel

*Small Ships, Big Adventures*

**wildearth-travel.com**

**info@wildearth-travel.com**

Indigenous peoples living here will pass before your eyes. On the Sault Ste. Marie Canal, Canada's past and present come together for you in an impressive way.

**Sat, 14.08.2027 - Mon, 16.08.2027 Expedition days on Lake Superior**

(Silver Islet, Terrace Bay, Battle Island, Slate Island)

Look forward to exciting days exploring Lake Superior. Only a few cruise ships travel as far as Lake Superior. It is the largest of the Great Lakes and the second-largest freshwater area in the world. Here on board, you will be a total of about 180 m (591 ft) above the sea level of the Atlantic, which is an impressive difference in altitude for a ship - and unique on a cruise.

The small peninsula of Silver Islet was the epicentre of silver mining at the end of the 19th century, with one of the most important mines in Canada. It is a privilege for you to explore the site as only 20 ships a year are allowed to call here. With so many hiking trails on the peninsula, you could spend the whole day hiking - for example, on the Sea Lion Trail that runs parallel to the water. In the afternoon, you can board the Zodiacs to explore the region from the water. Weather permitting, you can even see the shaft of the mining operation.

Terrace Bay is idyllically situated on the northern shore of Lake Superior. Explore the picturesque town directly from the pier. On your own or with your experts, experience the wonderful nature on numerous hiking trails, where black bears and moose may also be spotted. Along the coastline, the boardwalk invites you to take a beautiful walk that perfectly showcases the region's natural beauty. At the end of the boardwalk, there is a forest and also the entrance to the Red Chair Trail: this scenic hike takes you through a quiet, wooded area to enjoy fantastic views of the bay and ship or to the historic lighthouse and rushing waterfalls - indeed, the journey is the destination.

Just landing on Battle Island in a Zodiac is an extraordinary experience in itself. As you pass between two islands, you can enjoy the view of the rocky, rugged coastline, which suggests that there are many opportunities for hiking. And indeed, the island invites you to exciting explorations on foot. A wonderful hiking trail leads you through a magical forest to the 19th-century lighthouse. It sits perched high up on the cliffs as an iconic landmark for the many stories of Lake Superior, which a Native American tells here at the fog house in summer.

The Zodiacs are perfect for exploring the Slate Islands Provincial Park. A region

of many small islands covered with trees up to the waterline, just waiting to be discovered. Your adventure is close to nature and will take you into the habitat of numerous animals such as the rare coastal wolf. The Zodiacs will carefully navigate you through the shallow water of the rocky coastline. A wilderness that will stir your emotions, whether you are seeking adventure or relaxation.

**Tue, 17.08.2027 Sault Ste. Marie/USA**

(official stop)  
Relaxation at sea

You'll continue to Sault Sainte Marie. Here, stars and stripes meet the maple leaf. The Saint Marys River separates the Canadian and American sides of the border. At the official stop, you will clear in at the border control on the US side. Use the time afterwards to visit the historic locks and a museum ship. Your experts on board will be happy to tell you about the importance of the Soo Locks for the development of shipping in North America and the industrialisation of the region.

**Wed, 18.08.2027 Mackinac Island/Lake Huron**

07.00 - 17.00 hrs

Mackinac Island is a natural jewel and is considered to be one of the most beautiful islands in the USA. Life still moves at a slow pace here. The streets are filled with the ringing of bicycle bells, the clattering of horses' hooves and the rattling of carriages - because this little idyll is car-free. The historic Fort Mackinac from the time of the American War of Independence perches majestically high up on a cliff. It tells the story of 1812, when the original buildings, which are still preserved today, were conquered by the British. The Victorian villas and the island's grand hotel tell of the 19th century. The spacious Marquette Park, the marina and the city centre with its many shopping opportunities and restaurants underline how beautiful the present is. Enjoy Mackinac Island fudge, a world-famous sweet speciality.

**Thu, 19.08.2027 Milwaukee/Lake Michigan/USA**

Arrival 13.00 hrs  
Overnight stay on board

Wild Earth Travel

*Small Ships, Big Adventures*

**0800 945 3327** (within New Zealand) | +64 (0) 3 365 1355 | **1800 107 715** (within Australia)

info@wildearth-travel.com | wildearth-travel.com





Milwaukee sits on the western shore of beautiful Lake Michigan. It calls itself "America's most German city", with around 50 % of residents claiming German ancestry. From its days as a centre of German brewing to its diverse museum scene, the city's vibrant neighbourhoods are connected by the scenic RiverWalk. Countless shops and cafes invite you to take a relaxing stroll through the city. The Harley-Davidson brand, which was founded here, is a symbol of the American way of life and has its own museum. The towering white structure of the Quadracci Pavilion, which houses the Milwaukee Art Museum, looks like the bow of a ship as it sets sail. But before you yourself continue your cruise on board, enjoy Milwaukee's charm to the full.

Fri, 20.08.2027 Milwaukee/Lake Michigan/USA

Please Note:

Itineraries are subject to change.



# Wild Earth Travel

*Small Ships, Big Adventures*

**wildearth-travel.com**

**info@wildearth-travel.com**

## YOUR SHIP: HANSEATIC INSPIRATION/NATURE/SPIRIT

<b>YOUR SHIP:</b>	<b>Hanseatic Inspiration/Nature/Spirit</b>
<b>VESSEL TYPE:</b>	<b>Expedition</b>
<b>LENGTH:</b>	<b>138 m</b>
<b>PASSENGER CAPACITY:</b>	<b>230</b>
<b>BUILT/REFURBISHED:</b>	<b>2021</b>

The HANSEATIC inspiration, a small, state-of-the-art expedition ship with a maximum of 230 guests, offers a perfect blend of adventure and comfort for explorers seeking to uncover the world's wonders. As an international vessel conducting cruises in both English and German, it brings over 30 years of expertise from a market leader in German-speaking countries to every journey. Each expedition is a masterpiece, passionately crafted to reveal far-flung worlds--be it icy realms, tropical paradises, wildlife havens, or cultural gems--making every voyage a unique discovery aboard this exceptional ship.

Features of all cabins and suites

An ocean view with even more: exclusively outside cabins and suites, almost all with balconies or French balconies

Spaciously designed - enjoy a relaxing stay in rooms from 21 m<sup>2</sup>/226 ft<sup>2</sup> up to 71 m<sup>2</sup>/764 ft<sup>2</sup> in size

Exceptionally equipped - for example, with binoculars, Nordic Walking poles, air conditioning, coffee machine and mini bar (free of charge) and 24-hour cabin service

Separable beds

Rain shower and heated wall in bathroom (e.g. for towels and

wet parkas)

Extensive infotainment with live broadcast and recordings of expert presentations, forwardview camera, navigation chart, films and much more

Restaurants

Aboard the HANSEATIC inspiration, a new kind of freedom blends adventure and pleasure with a culinary journey across three exceptional restaurants. The spacious HANSEATIC Restaurant offers flexible mealtimes and a free choice of seating, serving a daily-changing menu of global flavors inspired by local specialties, paired with fine wines and supported by attentive 24-hour cabin service. At the Lido Restaurant, guests can savor breakfast under the open sky or enjoy a perfectly grilled steak from the outdoor barbecue, complete with panoramic views and an open show kitchen. The specialty restaurant Nikkei fuses fine Japanese creations with modern Peruvian cuisine, delivering a unique dining experience that elevates exploration to new heights--all while bars in the Observation Lounge and HanseAtrium offer favorite drinks against stunning backdrops, from Nordic fjords to icy Antarctic vistas.

Fitness and Wellness

On the HANSEATIC inspiration, an extraordinary time out awaits after thrilling Zodiac rides, challenging hikes, or Arctic adventures. Unwind in the Ocean Spa, where a Finnish sauna with stunning ocean views, a gentle steam sauna, an ice fountain, and a relaxation room rejuvenate your senses, complemented by professional massages, cosmetic treatments, and eco-friendly products made from natural, vegan ingredients.



Wild Earth Travel  
*Small Ships, Big Adventures*

**0800 945 3327** (within New Zealand) | +64 (0) 3 365 1355 | **1800 107 715** (within Australia)

info@wildearth-travel.com | **wildearth-travel.com**



# Wild Earth Travel

*Small Ships, Big Adventures*

**wildearth-travel.com**

**info@wildearth-travel.com**

Stay active in the 100 m<sup>2</sup> fitness room or separate course room--both with ocean vistas--guided by a fitness coach offering personalized advice and a variety of courses, either indoors or on deck. The pool area, with its flexible canopy, invites relaxation year-round, featuring water loungers, a whirlpool, and a bar, ensuring a perfect blend of indulgence and revitalization against the backdrop of the open sea.

#### Knowledge

Shore excursions and Zodiac rides come alive with deeper context through fascinating presentations in the HanseAtrium, a high-tech lounge where experts share daily precaps and recaps, doubling as an atmospheric evening bar for films and discussions. The Ocean Academy enhances the journey with a Study Wall and interactive poster of scientific insights, microscopes for exploring hidden wonders alongside experts, and Study Seats--with swivel touchscreens--for personal dives into science. Supported by travel diaries and destination videos, this immersive experience broadens horizons with cutting-edge tools and expertise.



expertise.

**Wild Earth Travel**

*Small Ships, Big Adventures*

**0800 945 3327** (within New Zealand) | +64 (0) 3 365 1355 | **1800 107 715** (within Australia)

info@wildearth-travel.com | **wildearth-travel.com**



# Wild Earth Travel

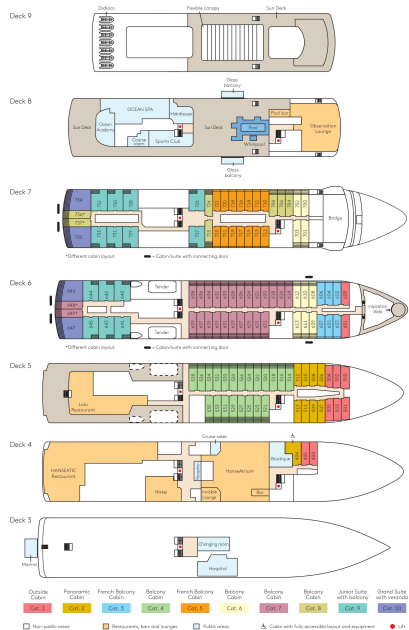
*Small Ships, Big Adventures*

[wildearth-travel.com](http://wildearth-travel.com)

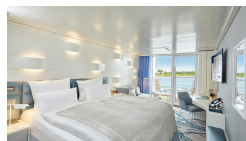
[info@wildearth-travel.com](mailto:info@wildearth-travel.com)

## INSIDE YOUR SHIP

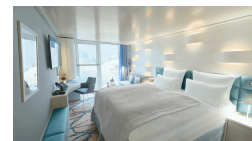
Deck plan HANSEATIC inspiration



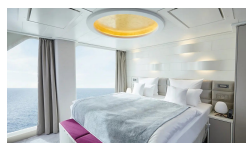
Balcony Cabin



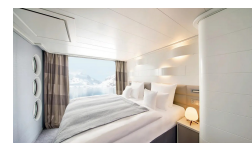
French Balcony Cabin



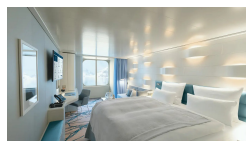
Grand Suite



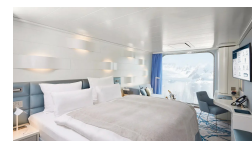
Junior Suite



Outside Cabin



Panoramic Cabin



Wild Earth Travel  
*Small Ships, Big Adventures*

0800 945 3327 (within New Zealand) | +64 (0) 3 365 1355 | 1800 107 715 (within Australia)

[info@wildearth-travel.com](mailto:info@wildearth-travel.com) | [wildearth-travel.com](http://wildearth-travel.com)



**wildearth-travel.com**

**info@wildearth-travel.com**

## PRICING

07-Aug-2027 to 20-Aug-2027

Outside Cabin	8490 EUR pp
Panoramic Cabin	8490 EUR pp
French Balcony Cabin	10920 EUR pp
Balcony Cabin	11840 EUR pp
Junior Suite	16370 EUR pp
Grand Suite	0 pp