



GREAT LAKES EXPLORER CRUISE

Experience our most immersive exploration along The Great Lakes, the largest freshwater system in the world. Take an exhilarating boat ride in Niagara Falls and come within feet of its misty spray. Visit the Cleveland Museum of Art, one of the top art museums in the country, before traveling to the Henry Ford Museum in Detroit to learn how he changed the world of technology and manufacturing.

Delight in an aerial adventure over Parry Sound Harbor and a guided bike ride around Georgian Bay. Enjoy a narrated cruise on the beautiful St. Mary's River in Sault St. Marie and learn the rich 300-year-old history of the area and the story behind the Soo Locks. Explore Michigan's pristine wilderness and scenic landscapes in Marquette, lined with miles of Lake Superior shoreline.

Enjoy a day aboard Pearl Mist, cruising the scenic Keweenaw Waterway, ornamented with sandstone cliffs and sparkling spring waterfalls. Delve into its fascinating history of Duluth with an exploration of the area's many museums, including the Lake Superior Railroad Museum.



ITINERARY

Day 1 Toronto, ON

Board Pearl Mist to begin your 14-Night Great Lakes Explorer cruise. As you embark upon your journey, enjoy a Welcome Aboard Reception with cocktails, hors d'oeuvres and entertainment. Meet the crew, your onboard experts, and fellow guests. Learn more about the wonderful adventure ahead of you.

Day 2 Niagara Falls, ON

Wild Earth Travel

Small Ships, Big Adventures

wildearth-travel.com

info@wildearth-travel.com

World-famous Niagara Falls stands 165 feet tall and is comprised of three waterfalls - Horseshoe Falls, the American Falls, and the Bridal Veil Falls. These famous falls are shared by both Ontario and New York which are connected by the Rainbow Bridge. Our local guide will show you the best vantage points and will explain the importance the falls once had to Native Americans and fur traders.

Day 3 Cleveland, OH

Cleveland is a city made up of dozens of diverse and eclectic neighborhoods, with a lively downtown area that dazzles after dusk. Stroll through the historic West Side Market which features more than 80 family-owned businesses. View the tombstone of John D. Rockefeller, who is buried at the beautiful Lake View Cemetery. Explore the Cleveland Museum of Art, containing one of the most renowned art collections in the world.

In the Tremont neighborhood, visit the home where the famous movie *A Christmas Story* was filmed, and have a cold brew at a bar said to have been frequented by Eliot Ness, the famous crime fighter who brought down Al Capone. No trip to Cleveland is complete without a trip to the Rock & Roll Hall of Fame, where you can view Michael Jackson's white sequined glove, Jim Morrison's boy scout uniform, and Elvis' motorcycle.

Day 4 Detroit, MI

Detroit is commonly known as The Motor City, as Ford, General Motors, and Chrysler have been producing cars there for more than a century. Though, it's equally famous as the birthplace of Motown Records, and for its many beloved sports teams.

Today, through its revitalization, Detroit has taken on a new appeal. From eye-popping street art and jazz clubs to vintage cars and impressive art deco architecture, the city is perfectly vibrant, progressive, and charming. Shop for art, jewelry, artisan crafts, and more at the Eastern Market, the largest historic public market district in the United States, dating back over 150 years. Visit the renowned Detroit Institute of Arts, a remarkable museum located in the heart of Midtown with more than 65,000 works. For some exercise, take a walk along The Dequindre Cut Greenway, a two-mile urban recreational path that offers a pedestrian link between the East Riverfront and historic neighborhoods.

Day 5 Midland, ON

Midland is the main town and economic center of the area located at the southern end of Georgian Bay's Thirty Thousand Islands. Learn about the history of this fascinating city with a visit to Sainte-Marie among the Hurons, a living museum depicting 17th-century missionary life. Stroll along the Midland Harbor, a picturesque destination featuring a large statue of the trumpeter swan, considered the symbol of Midland. For bird lovers, the Wye Marsh Wildlife Centre is a habitat for Trumpeter Swans, Black Terns, and Least Bitterns.

Day 6 Parry Sound, ON

Located on the eastern shore of Georgian Bay in Lake Huron, Parry Sound is a picturesque port town with charming cottages and spectacular views. Parry Sound is located inside the UNESCO designated Georgian Bay Biosphere Reserve. One of only 16 Biosphere Reserves in Canada, it is home to a variety of rare species of plants and animals. While ashore, explore Killbear Provincial Park, enjoy a scenic boat ride around the 30,000 islands, or take an aerial sightseeing tour.

Day 7 Day of Cruising

As we make our way to Mackinac Island, Michigan, witness the natural wonders and majestic beauty of the Great Lakes from the comfort of your fully furnished private balcony. Along the way, delight in the locally inspired cuisine prepared by our team of master chefs.

Day 8 Mackinac Island, MI

Mackinac Island is a living Victorian town where personal motorized vehicles are prohibited - all those visiting or living on the island travel by horse or horse-drawn carriage, bicycle, or on foot. While Mackinac Island is known for its opulent Victorian homes and hotels, it has a long Native American history. Anishinabe-Ojibwe tradition holds that the island was a sacred place populated by the first people and was home to the Great Spirit Gitchie Manitou.

Wild Earth Travel

Small Ships, Big Adventures

0800 945 3327 (within New Zealand) | +64 (0) 3 365 1355 | **1800 107 715** (within Australia)

info@wildearth-travel.com | **wildearth-travel.com**



Day 9 Escanaba, MI

Nestled along the picturesque shores of Lake Michigan's Little Bay de Noc, Escanaba offers a unique blend of natural beauty and vibrant culture. With its pristine beaches, lush forests, and scenic trails, there are endless opportunities to explore the outdoors. Immerse yourself in the region's rich history at the Delta County Historical Museum, indulge in local flavors at area restaurants and breweries, or catch a performance at the historic William Bonifas Fine Arts Center.

Day 10 Sault Sainte Marie, MI

Nestled on the northeastern tip of the Upper Peninsula, Sault Sainte Marie is a timeless gem along the Great Lakes brimming with historical charm and natural beauty. Its name is derived from the French term meaning "Saint Mary's Rapids." Located at the junction of Lake Superior and Lake Huron, Sault Sainte Marie is renowned for its iconic Soo Locks, a marvel of engineering that allows ships to traverse the 21-foot drop between the two lakes. Visitors are drawn to its rich cultural heritage, exemplified by the Museum Ship Valley Camp and the River History Museum, which vividly depict the region's maritime past.

Day 11 Marquette, MI

Lined with miles of Lake Superior shoreline, Marquette is the perfect city to explore Michigan's pristine wilderness and scenic landscapes. Take a walk along one of its many pedestrian trails and admire the various historical lighthouses that adorn and protect its pristine shoreline.

Though area is known for its outdoor adventures, the arts and cultural scene is also very much alive, with an array of artists who invite you into their studios and galleries. Visit one of the area history museums, including the Iron Ore Heritage Museum, where you can learn about Marquette's iron mining industry, which has flourished for more than 125 years. Venture downtown to shop at chic boutiques, jewelry stores, and specialty shops. After, relax with a refreshment at one of the local breweries, wineries, or tap houses.

Note: On the reverse itinerary, Silver Islet, ON is the featured port.

Day 12 Day of Cruising

Enjoy an afternoon aboard Pearl Mist, cruising the scenic Keweenaw Waterway. From the comfort of your private balcony, bask in the beauty of soaring sandstone cliffs, carved by glaciers, and sparkling spring waterfalls. Your onboard expert will provide commentary as we pass unique wildlife, historic lighthouses, and geological features that are over 1 billion years old.

Day 13 Thunder Bay, ON

Northwest Ontario's largest city, Thunder Bay is a vibrant community surrounded by natural wonders, including thousands of square miles of Canadian wilderness and over 150,000 lakes and rivers. Explore the historic buildings and public art displays of Thunder Waterfront and North Core. Delight in a scenic drive to Kakabeka Falls, which means 'waterfall over a cliff' in Ojibwe and is also nicknamed the 'Niagara of the North' due to its size and accessibility. Venture to Fort William Historic Historical Park for a guided exploration of this living museum, featuring reconstructed buildings and historians dressed in period clothing.

Day 14 Duluth, MN

Located along the picturesque shores of Lake Superior, Duluth is the biggest inland harbor in the world, despite being 600 feet above sea level and over 2,000 miles from the Atlantic Ocean. Both rugged and refined, the town is home to a world famous ariel lift bridge and charming neighborhoods filled with local breweries and restaurants.

Delve into its fascinating history with an exploration of the area's many museums, including the Lake Superior Railroad Museum, which features immaculately restored locomotives, as well as exhibits that preserve, present, and interpret the history of railroading. Visit the famous 39-room Glensheen Mansion built with remarkable 20th-century craftsmanship, telling the story of the Duluth region. Later, discover dynamic works of art at The Duluth Art Institute.

Day 15 Duluth, MN

After breakfast on board, begin your journey home, reflecting upon the incredible experiences you've had and the wonderful new friends made.



Wild Earth Travel

Small Ships, Big Adventures

wildearth-travel.com

info@wildearth-travel.com

Please note:

Itineraries are subject to change.

Wild Earth Travel
Small Ships, Big Adventures

0800 945 3327 (within New Zealand) | +64 (0) 3 365 1355 | **1800 107 715** (within Australia)

info@wildearth-travel.com | **wildearth-travel.com**



wildearth-travel.com

info@wildearth-travel.com

YOUR SHIP: PEARL MIST

YOUR SHIP:	Pearl Mist
VESSEL TYPE:	Small Ship
LENGTH:	105 m
PASSENGER CAPACITY:	210
BUILT/REFURBISHED:	2014

Cruise in unparalleled comfort aboard the Pearl Mist Cruise Ship, accommodating up to 210 guests, as you journey to the most captivating destinations.

Every corner of the Pearl Mist ship, from the staterooms and suites to the lounges and dining areas, has undergone a stunning transformation. Expect fresh color palettes, luxurious textiles, new furniture and carpets, and captivating regionally inspired artwork.

Every space aboard the ship has been completely reimaged, incorporating themes that expertly highlight the local historical, cultural, and geographical influences characteristic to the regions Pearl Mist sails.

Furnishings throughout the ship are elegant and comfortable with a variety of spacious lounges to fit every mood - from the quiet library to the social atmosphere of the Atlantic Lounge. The Pearl Mist also features open sun decks, a fitness area, and a glass-enclosed dining room offering panoramic views.

Pearl Mist Amenities and Features

COMPLIMENTARY WI-FI

ELEVATOR ACCESS TO ALL STATEROOM DECKS OF THE SHIP

MANY LOUNGES OFFER AN ATMOSPHERE FOR EVERY MOOD

GRAND DINING ROOM ACCOMMODATES ALL GUESTS TOGETHER
OPEN-AIR EXERCISE AREA WITH VIEWS OF PASSING SCENERY
SATELLITE TV AND DVD PLAYER IN ALL STATEROOMS
SPACIOUS STATEROOMS ARE THE LARGEST ON ANY CRUISE SHIP

FULL-SIZE PRIVATE BATHROOMS WITH A FULL SET OF AMENITIES

PRIVATE BALCONIES

TWICE DAILY STATEROOM SERVICE

INDIVIDUAL CLIMATE CONTROL

EVENING ENTERTAINMENT FOCUSES ON MUSIC AND HISTORY

COMPLIMENTARY COCKTAIL HOUR EACH EVENING

ONBOARD HISTORIANS AND NATURALISTS

CULINARY PROGRAM FEATURING LOCALLY SOURCED INGREDIENTS

PERSONALIZED SERVICE

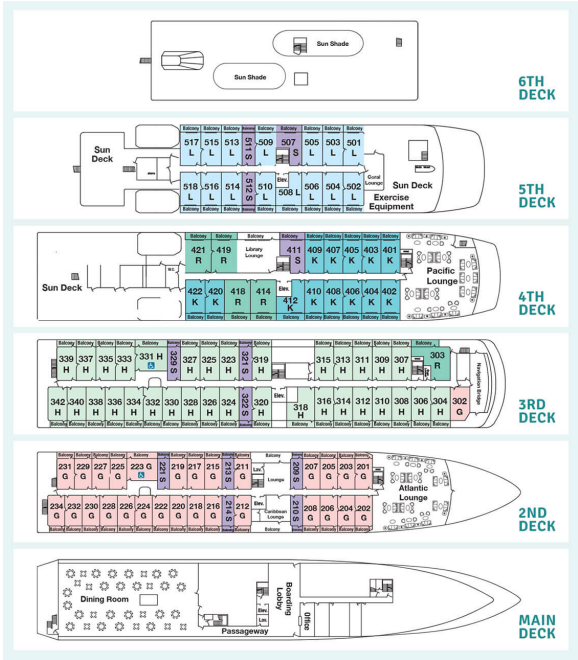


ZED SERVICE



wildearth-travel.com
info@wildearth-travel.com

INSIDE YOUR SHIP



Category G



Category H



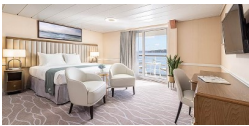
Category K



Category L



Category R



Category SGB



Deluxe Balcony



Premium Balcony



Single Balcony 1



Single Balcony 2





PRICING

13-Jun-2026 to 27-Jun-2026

Category G	11580 USD pp
Category H	12200 USD pp
Category K	14190 USD pp
Category L	14830 USD pp
Category SGB	17720 USD pp
Category R	18300 USD pp

27-Jun-2026 to 11-Jul-2026

Category G	11580 USD pp
Category H	12200 USD pp
Category K	14190 USD pp
Category L	14830 USD pp
Category SGB	17720 USD pp
Category R	18300 USD pp

13-Jul-2027 to 27-Jul-2027

Standard Balcony	12480 USD pp
Deluxe Balcony	12990 USD pp
Premium Balcony	15420 USD pp
Single Balcony 2	18610 USD pp
Single Balcony 1	19590 USD pp
Veranda Suite	19980 USD pp

27-Jul-2027 to 10-Aug-2027

Standard Balcony	12480 USD pp
Deluxe Balcony	12990 USD pp
Premium Balcony	15420 USD pp
Single Balcony 2	18610 USD pp
Single Balcony 1	19590 USD pp
Veranda Suite	19980 USD pp

Optional extras & upgrades

Pre-Cruise Toronto, ON

For those guests who wish to start their cruise in style, we are offering a brand new Signature Pre-Cruise Package at the prestigious Four Seasons Hotel Toronto. Enjoy a 1-night stay at this renowned 5-star hotel, located in the heart of Toronto's exclusive Yorkville neighborhood.