



Wild Earth Travel
Small Ships, Big Adventures

wildearth-travel.com info@wildearth-travel.com

GRAND GREENLAND - MYTHICAL LANDS OF THE NORTH

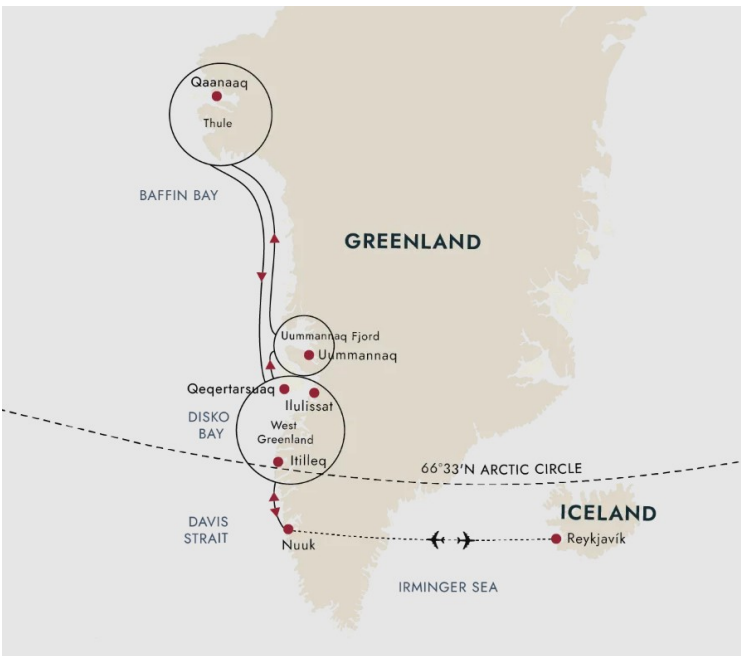
Icy waters of Disko Bay

We set out north from Nuuk along the rugged and breathtaking coast of west Greenland. See immense icebergs from tidewater glaciers in Disko Bay, including Sermeq Kujalleq, the gigantic glacier at the head of UNESCO-listed Ilulissat Icefjord. As we sail, we'll be on the lookout for whales.

Thule High Arctic region

Isolated even by Arctic standards, the inhabitants of the far north - known in legend by the name Thule - have for centuries been the northernmost communities on the planet. Expect High Arctic conditions, cold adapted wildlife, ice choked waters, and the coolest summer on Earth.

Please check for adjusted prices based on the option to fly from Copenhagen instead of Reykjavik.



ITINERARY

DAY 1 Cosmopolitan Reykjavík

Explore the world's northernmost capital, Reykjavik

Your adventure begins with an overnight stay in Reykjavik.

A laid-back city of art, culture and history, delightful Reykjavik is well worth spending some time getting to know.

Take a stroll along Laugavegur with its boutiques and outdoor shops, gaze in awe at the striking Hallgrímskirkja



Wild Earth Travel

Small Ships, Big Adventures

wildearth-travel.com

info@wildearth-travel.com

Church, and drop in on the fascinating Reykjavik Art Museum.

If you have the time, we recommend booking a Pre-Programme with us and discovering some of Iceland's natural highlights before your cruise begins.

DAY 2 Embarkation day at Nuuk

Welcome to the capital of Greenland

You'll have an early start today as we depart Reykjavik and fly to Nuuk.

Nuuk is Greenland's colourful and compact capital. With a population of fewer than 20,000, it's a striking mix of old and modern buildings. If you're more a fan of the former, head down to the old part of town by the waterfront, where you'll find Nuuk Cathedral and the statue of Hans Egede standing on a hill. In the water below, you'll see the beautiful Mother of the Sea statue - a striking juxtaposition between the two.

Your expedition ship awaits you in the harbour. After being welcomed aboard and collecting your complimentary expedition jacket, it's time to settle into your cabin and enjoy your first dinner aboard.

DAY 3 Sailing towards Disko Bay

Sailing to Disko Bay Getting ready for adventure

Sailing towards the Arctic Circle you'll have time to get acquainted with the AECO rules and recommendations regarding operations and landings in the fragile Arctic environment. Make sure you attend these mandatory presentations if you want to join planned landings as we head north.

You will also have time to settle on board, enjoy the state-of-the-art ship facilities and join the first lectures on Greenland related topics, including the Citizen Science projects run on board the ship.

At some point during the sailing, we will cross the Arctic Circle, entering the

lands of the Midnight Sun at the height of summer.

DAY 4 UNESCO-listed Ilulissat Icefjord

See the jaw-dropping beauty of nature's artworks

Today we reach Disko Bay - a haven for whales and other wildlife. The waters here are scattered with icebergs in many shapes and sizes, and they all come from one place - the Ilulissat Icefjord. This spectacular UNESCO World Heritage Site regularly tops the list of things to see and do in Greenland, and today you'll find out why. Enjoy the scenery as you walk along the wooden gangway to the breathtaking ice fjord.

Marvel at giant icebergs floating placidly in the deep blue waters as they take on different hues of white, grey and blue. All photographers, regardless of skill, will return to the ship with the most enviable images. Back in pretty Ilulissat, visit the Icefjord Centre to learn more about the ice in this fascinating area and take a hike to Sermermiut to drink in the incredible views.

DAY 5 Exploring Uummannaq Fjord

Entering through the gateway to the north

Beyond the Nuussuaq peninsula, distances start to mean everything, because it's here that Greenland's 'Far North' begins. At this latitude life proceeds at a slower pace. Weather and ice conditions run the show, and any successful landing that we attempt depends on the ability of the Captain to safely navigate waterways - especially when a summer fog descends. All in all, it's the perfect setting for our expedition.

The beauty of the land and the relative productivity of the environment here have attracted people since the first settlers came down the coast more than 4,000 years ago. Intriguing archaeological sites are mute witness of the ability of Arctic people to thrive in such a harsh environment. It is from this area that the famed Qilakitsoq mummies were discovered.

Potential activities around here include calls at small communities such as Uummannaq - a beautiful island town with a heart-shaped mountain - or

Wild Earth Travel
Small Ships, Big Adventures

0800 945 3327 (within New Zealand) | +64 (0) 3 365 1355 | **1800 107 715** (within Australia)

info@wildearth-travel.com | **wildearth-travel.com**



Ukkusissat. We may visit the archaeological site of Qilakitsoq, go on nature landings, or attempt ice cruising in the inner fjords with our small expedition boats.

DAY 6 At sea

Relax and learn at sea

We'll spend the day on the open seas crossing Melville Bay. This is a huge bay bordering the icy coast of Lauge Koch, where the ice caps meet the sea. Known by the locals as Qimusseriarsuaq, meaning 'The Great Dog Sledding Place', the bay was renamed by British explorers after Robert Dundas, 2nd Viscount of Melville in the mid-19th century.

Enjoy your day as we sail well beyond 70 degrees north. Relax on board, join in with wildlife watches out on deck with the Expedition Team, and learn more about the Arctic with the ongoing series of lectures on topics such as nature, geology and mythology.

DAY 7-11 Discovering the Thule region

Explore life at the edge of the world

'Ultima Thule' was the term used in the 4th century BC by the Greek explorer Pytheas to describe a mythical land in the far north. Nobody knows for sure which land Pytheas had in mind when he coined this name, but for some it has come to refer to the far north in Greenland.

As we explore here, expect wild beauty at the edge of the inhabitable world. Extreme climatic conditions year-round guarantee isolation and tough living conditions for the inhabitants, and even by Arctic standards the Thule region is harsh and remote. And yet, this was the first region in Greenland ever to be colonized by the forerunners of the Inuit, somewhere around 4,500 years ago. How they managed to survive and thrive in that environment still puzzles Arctic archaeologists.

The abundant bird and animal life provides sustenance, and the traditional hunting culture has survived better here than elsewhere in Greenland. The

polar travel know-how of the locals has been highly sought after on European and American expeditions, either as guides or saviours. In fact, thanks to its position, the region has been the natural starting point for many travellers heading towards the North Pole.

Always adapting our programme to the changeable weather and ice conditions, we will spend the next days exploring the region. We aim to visit some of the local communities, land with expedition boats and marvel at the power of nature, sail through icy channels and - with a bit of luck - spot some of the giants of the Arctic, including walruses, orcas, narwhals, belugas, and perhaps even polar bears.

DAY 12-13 At sea

Crossing Baffin Bay

We are now sailing south again, our adventures in the north completed. Days at sea are the perfect time to relax on board, perhaps chatting with new friends in the Expedition Lounge & Bar, catching up on any lectures you may have missed and enjoying leisurely lunches. If you haven't tried the hot tubs yet, now's your chance. There's something magical about bathing in warm water as icebergs drift past!

Out on deck, the Expedition Team will keep their wildlife watch every day, and guest lecturers will continue to reveal new and interesting information about Greenland, the Arctic and other topics related to our voyage. Feel free to join in with any of the Citizen Science projects that are running - they're engaging and fun, and you'll be contributing something useful to global research.

DAY 14-15 Landscapes and communities of west Greenland

Visit modern towns on the edge of the wilderness

The central west coast of Greenland is a land of contrasts, home to some of the longest fjords in the country and a sprinkling of settlements, including the second-largest town on the island. However, the vastness of the land makes this stretch of the coast a sparsely-populated region, where huge distances are the norm, and the sense of remoteness and isolation is just a part of daily life.



On our journey south we'll visit communities where traditions are still alive, including Sisimiut, which lies 25 miles north of the Arctic Circle. The modern town has grown up alongside very ancient remains that date back to more than 4,000 years. If you want to learn more about the ancient Saqqaq culture, make sure to visit the interesting local museum. If you're looking for a special souvenir, pick up a scarf, hat or mittens made of qiviut, the inner wool of a musk ox, said to be 10 times warmer than sheep wool.

On our journey south we'll visit some communities where traditions are still alive. Potential calls include Qeqertarsuaq, the main settlement on Disko Island, and Itilleq, a small fishing and hunting village on a tiny island just over a mile north of the Arctic Circle. Whether hiking on land, meeting the friendly Greenlanders, or scanning the waters for wildlife, these last days on board are the perfect epilogue for our voyage.

DAY 16 End of expedition in Nuuk

A small capital in a grandiose setting

Today, as we arrive at Nuuk, you will say a fond farewell to MS Fridtjof Nansen, her crew, the Expedition Team and the new friends you will have made. The lively capital of Greenland is a metropolis compared to all other towns in the country you have visited over the last couple of weeks. If you have time before flying back home, it is a fascinating window onto modern Greenland.

From here, you'll catch a flight back to Reykjavik, taking with you a wealth of fantastic memories that will no doubt endure.

DAY 17 Back to Reykjavík

See more of Iceland's capital

Your adventure concludes in Reykjavik, giving you another chance to explore Iceland's stylish capital.

If you want to discover more, you can join our optional Post-Programme before

heading home. Or simply extend your stay and enjoy Reykjavik and its surrounding geothermal attractions.

Please Note:

Itineraries are subject to change.



Wild Earth Travel

Small Ships, Big Adventures

wildearth-travel.com

info@wildearth-travel.com

YOUR SHIP: FRIDTJOF NANSEN

YOUR SHIP:	Fridtjof Nansen
VESSEL TYPE:	Expedition
LENGTH:	140 m
PASSENGER CAPACITY:	530
BUILT/REFURBISHED:	2020

MS Fridtjof Nansen is the latest addition to Hurtigruten's fleet of custom built ships - and the next generation expedition ship. She will explore some of the most spectacular corners of the globe. Featuring Hurtigruten's revolutionary battery hybrid powered propulsion system, MS Fridtjof Nansen will be a near identical twin to her sister ship MS Roald Amundsen. Combining state of the art technology and premium on board experience with Hurtigruten's 125 years of experience and unparalleled destinations, the two Norwegian built ships introduces the next generation of adventure travel.

Cabins and public areas

The stunning scenery will be reflected in a rich and comfortable interior design. Scandinavian materials from nature, such as granite, oak, birch and wool will be used to create relaxed and stylish cabins and public areas. All cabins are outside, 50 % will have private balconies, aft suites will feature private outdoor hot tubs with spectacular views.

Science Center

The core of the onboard experience is the Nansen Science Center, an edutainment venue to guests and crew meet to create a deeper understanding of the areas we explore. Nansen

Science Center will also be the on board HQ for the Expedition Team.

Restaurants

MS Fridtjof Nansen's three restaurants will host a variety of dining options, with menus drawn from our rich Norwegian and Nordic tradition, as well as international cuisine and local inspiration. Whether enjoying your meal at Aune Main Dining, Fredheim - the informal international meeting place, or the specialty restaurant Lindstrøm, you will indulge in low key yet refined, modern Norwegian Nordic cooking - where our honest and delicious cuisine reflects our destinations.

After a day of exploring new destinations, guests can relax and rejuvenate in the elegant Explorer Lounge, a large gym and Wellness center, or enjoy the scenery and sunsets on the massive in- and outdoor Observation Decks with the aft infinity pool and hot tubs as one of the highlights.

Everything you need for an expedition cruise

Each expedition voyage is accompanied by a hand-picked team of specialists and modern-day explorers. Highly experienced, passionate and knowledgeable, the Expedition Team will be your guides and guardians on your voyage of exploration, instructing you on safety, sustainability and science. MS Fridtjof Nansen will feature a variety of custom built expedition equipment, including kayaks, a fleet of Blueeye underwater drones and Expedition Boats for safe landings in remote areas.

In the footsteps of a great explorer

The newest addition to our fleet will honor the heritage of her namesake - the Norwegian explorer, scientist, humanitarian and Nobel Peace Prize laureate Fridtjof Nansen. Known for his

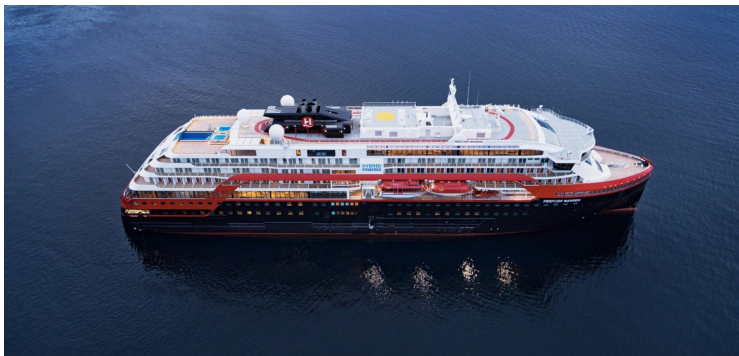
Wild Earth Travel
Small Ships, Big Adventures

0800 945 3327 (within New Zealand) | +64 (0) 3 365 1355 | **1800 107 715** (within Australia)

info@wildearth-travel.com | wildearth-travel.com



innovations in Arctic expeditions, Nansen led the first crossing of Greenland on cross-country skis. He is perhaps most famous for his attempt to reach the geographical North Pole during the Fram Expedition (1893-1896). Interestingly, after Nansen's Fram expedition, the ship was passed on to another great explorer who secretly planned an expedition to the South Pole - Roald Amundsen.



d Amundsen.

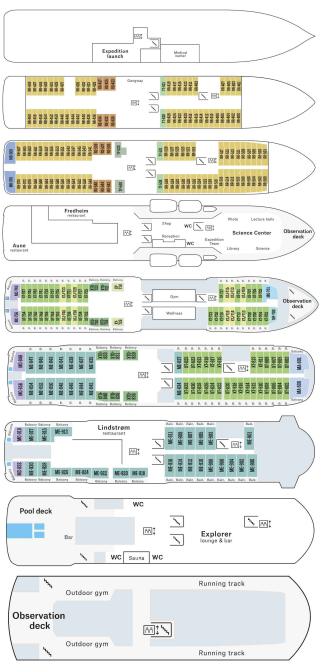


Wild Earth Travel
Small Ships, Big Adventures

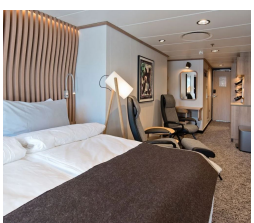
wildearth-travel.com

info@wildearth-travel.com

INSIDE YOUR SHIP



Arctic Superior. From



Expedition Suite. From



Polar Outside. From



Wild Earth Travel
Small Ships, Big Adventures

0800 945 3327 (within New Zealand) | +64 (0) 3 365 1355 | **1800 107 715** (within Australia)

info@wildearth-travel.com | wildearth-travel.com



Wild Earth Travel

Small Ships, Big Adventures

wildearth-travel.com

info@wildearth-travel.com

PRICING

15-Jul-2025 to 31-Jul-2025

Polar Outside. From	17500 AUD pp
Arctic Superior. From	19015 AUD pp
Expedition Suite. From	23287 AUD pp

03-Jul-2026 to 19-Jul-2026

Polar Outside. From	20810 AUD pp
Arctic Superior. From	22705 AUD pp
Expedition Suite. From	28045 AUD pp

17-Jul-2026 to 02-Aug-2026

Polar Outside. From	20810 AUD pp
Arctic Superior. From	22705 AUD pp
Expedition Suite. From	28045 AUD pp

31-Jul-2026 to 16-Aug-2026

Polar Outside. From	20479 AUD pp
Arctic Superior. From	22338 AUD pp
Expedition Suite. From	27575 AUD pp

Wild Earth Travel
Small Ships, Big Adventures

0800 945 3327 (within New Zealand) | +64 (0) 3 365 1355 | **1800 107 715** (within Australia)

info@wildearth-travel.com | wildearth-travel.com