

GLACIER BAY NATIONAL PARK WITH INSIDE PASSAGE & SAN JUAN ISLANDS

Whales and wildlife, kayaking and hiking. Thirteen days take you through Canada's Inside Passage and Southeast Alaska--plus remote wilderness, native culture, and Pacific Northwest natural history.



ITINERARY

DAY 1 Seattle Embarkation

Ah, the Emerald City! Check-in at the hospitality center and later, board your ship and settle in. Fishermen's Terminal, UnCruise's home in Seattle, you travel through the historic Hiram M. Chittenden Locks, where it's a 20 foot drop into the Salish Sea. Adieu, Seattle. (D)

DAY 2 Olympic National Park

Hike in Olympic National Park--a UNESCO World Heritage Site--surrounded by rainforest, old-growth forest, and top of the world 360-degree views. Then, you'll either trek at Hurricane Ridge or explore Lake Crescent. On a clear day, you can see Canada across to the Straits of Juan de Fuca. (BLD)

DAY 3 Canada's Inside Passage

Wild Earth Travel

Small Ships, Big Adventures

wildearth-travel.com

info@wildearth-travel.com

Mountains rise higher. Fjords get deeper. It's a day of intricate waterways and cruising for critters, keeping watch for black bears on shore, including the elusive spirit bear. Civilization slips away as you enter remote waters leading north through British Columbia. Surf-happy dolphins and porpoise like to catch a ride on the bow wave. Your captain and crew are on the lookout and give the call of a sighting. Aiming to entertain and educate over the next days, your expedition team is at the ready. Natural history, Native influences, and their favorite trivia games, too. (BLD)

DAY 4 Canada's Inside Passage Continues

Take your cup of joe to the bow. The world wakes up with you. Bald eagles watch the ship along its course from tree tops. Islands to the west, inlet-etched mainland to the east. Your captain and mates navigate twisting passages. Harbor seals spend their days on rocky islets. Breathe in the fresh air and take in miles of forested wilderness. See a waterfall and old abandoned cannery that come into view. That's Butedale. Slow down and take it all in as forested fjords roll by. In the lounge, your bartender mixes up the daily special. Take the challenge and play a few friendly hands of cards with your shipmate. (BLD)

DAY 5 Canada's Inside Passage, Cruise Narrow Channels

Today, you sail through the northern-most portion of Canada's wild Inside Passage and enter Alaska's. Check out the bridge—it's an ideal spot to look for whales and other wildlife including the elusive blonde Spirit Bears. Also see what the crew has in store today. Maybe a cooking or cocktail demonstration or a galley tour. Or maybe learn more about navigation from the crew, and try your hand at tying knots! This evening, we cross the border into Alaska. (BLD)

DAY 6 Misty Fjords National Monument

There are places on the planet that completely overcome you. This is one of them. The beauty. The peace. The sense of place you feel. Misty Fjords National Monument represents nearly every ecosystem found in Southeast Alaska. And that alone is a lot to consider. Glacial valleys filled with sea water. Sheer 3,000-foot cliffs. Sea birds, brown and black bears, mountain goats, Sitka black-tailed deer, all find safe haven here. Kayak in Walker Cove or Rudyerd Bay and you find it's just as easy to paddle and go, as it is to sit and

float and take it all in. Or skiff to the base of a waterfall for a fjord-released shower. The area's affectionate nickname, "The Yosemite of the North," is deserved. (BLD)

DAY 7 Ketchikan

In Ketchikan, connect with the Tlingit Culture. Tribal leader and local legend Joe Williams, known as Ka Xesh X'e in his native language, guides you on a walking tour. With a rich oral tradition, the Tlingit passed stories from generation to generation—and Joe's storytelling is captivating! Amble through the surrounding forest on a moderate to easy trail or challenge yourself to a hard-charger hike along trails and boardwalks past cedar, spruce, streams, and waterfalls. (BLD)

DAY 8 Wrangell Narrows & Thomas Bay

This morning, your ship winds into the Wrangell Narrows. Abundant bright red and green navigation lights guide the way. It's nicknamed "Christmas Tree Lane," of course. In the afternoon, head into Thomas Bay. When you come this far, you might as well go all in. This is way back backcountry of Alaska's wilderness. Glacial landscapes marked by moraines, muskegs, and mud. In this playground, it's all an option today. Kayak and skiff in water almost clear as glass. The mirror image of fjord walls plays on the surface. Keep it green on an interpretive walk through a grassy meadow into the forest. (BLD)

DAY 9 Chichagof Island

Spend some time on the bow as you glide through glacier-carved fjords along the Chichagof coast. Then anchor for more activities. Time to lower the kayaks and skiffs and get up close and personal with a sea otter or wildlife watching from your kayak. Camera in hand, set off on land and sea explorations. Closer inspection by skiff, moss-dripping trees run right down to the water. Any bears in there? With one of the world's largest populations of bears, it's possible. Go searching for giant trees and tidal pools. Hiking in the Tongass, it won't take long to find them. Your eagle-eyed guides lead the pack—and pull up the rear. (BLD)

DAY 10 Icy Strait Whale Search

Wild Earth Travel

Small Ships, Big Adventures

0800 945 3327 (within New Zealand) | +64 (0) 3 365 1355 | 1800 107 715 (within Australia)

info@wildearth-travel.com | wildearth-travel.com



Wild Earth Travel

Small Ships, Big Adventures

wildearth-travel.com

info@wildearth-travel.com

Bull whip kelp threads through nearby channels like deep, twisted mangroves. And you know better, but orange and purple starfish and jellyfish make it hard to believe you're not in the tropics. Follow the currents out to where the sea lions flock to remote rock formations. Your captain is on the bridge, the expedition team on deck, and all eyes are on the water and the shore. Everyone is on-watch for the telltale blow of humpbacks. Come closer to the shoreline by skiff, kayak, or on foot. Sometimes the smallest things are the biggest wonders. Take in the evening solitude from the bow, or the hot tub. Or both--why choose just one? (BLD)

DAY 11 Glacier Bay National Park

Welcome to our second National Park of the trip. The crown jewel of Southeast Alaska - we begin our visit in the rarely visited wilderness areas of the park. Less than 1% of the visitors to the park get the chance to go on land, and that's just what we've written up. Hike Gloomy Knob, kayak the placid waters of North Sandy Cove, or explore the meadows of Beartrack Cove - your expedition leader picks today's location based on recent wildlife sightings and weather conditions. After a full day, get out on deck for the evening cruise. The snowcapped mountains of the Fairweathers peek over the clouds as we make our way north. Ice begins to appear in the water...

DAY 12 Glacier Bay National Park

It's 6:00 AM. You were told this was going to be an early morning, and your alarm clock is the metallic sound of ice sliding past the hull of the ship. Grab a cup of coffee and a warm jacket; directly off the bow is either Johns Hopkins Glacier or Margerie Glacier, depending on the season and ice condition. The quiet of the morning is only interrupted by the thundering crash of the glacier as 10 story-buildings of ice crash into the sea in the soft light of sunrise. Grab a pastry and a big breakfast, today is going to be a banner day. The captain drops the anchor deftly at Lamplugh Glacier - the morning is your choice of how you want to experience the glacier. Kayaks, ridge hikes, and ice garden explorations are all at your fingertips. The afternoon is spent singularly focused on the wildlife of the park. Get your binoculars out and spot Mountain Goats at Gloomy Knob and Tufted Puffins at the birder's paradise of South Marble Island. This is our final day in the park - take it all in.

DAY 13 Juneau Disembark

Spend time exploring Alaska's capital city of Juneau before departing for included transfer to the airport or enjoy an extended stay at our downtown hotel. (B)

Please Note:

Itineraries are guidelines; variations in itinerary and the order of days may occur to maximize your experience.

Wild Earth Travel
Small Ships, Big Adventures

0800 945 3327 (within New Zealand) | +64 (0) 3 365 1355 | **1800 107 715** (within Australia)

info@wildearth-travel.com | **wildearth-travel.com**



wildearth-travel.com

info@wildearth-travel.com

YOUR SHIP: SAFARI ENDEAVOUR

YOUR SHIP:	Safari Endeavour
VESSEL TYPE:	Small Ship
LENGTH:	232 ft
PASSENGER CAPACITY:	84
BUILT/REFURBISHED:	1993

Four decks are fully equipped for comfort and action. From the exercise equipment and lounge chairs on the deck, the twin hot tubs on the upper deck, the bow viewing area on the lounge deck to the library and dining room on the main deck, everything you need is within easy reach.

The lounge has a large flat-screen TV featuring closed-circuit channels that include a GPS map of the location of the ship and an under-bow camera. The lounge also has a limited library, filled with wildlife encyclopedias and binoculars to be used for wildlife-spotting.

The dining room features open seating. Meals are served tableside at set times, unless the activities have taken you far afield, in that case you will take a boxed lunch with you. Unlimited beverages, alcoholic and non-, are included in the price of the cruise. Vegetarian, vegan, gluten-free, dairy-free options are available (though giving advanced notice to your Adventure Specialist will make sure you'll have plentiful of options).

Onboard Amenities

EZ Dock launch platform; kayaks, paddleboards, inflatable skiffs, hiking poles; underwater bow-mounted camera; two

on-deck hot tubs; fitness equipment and yoga mats, and movie and book library.

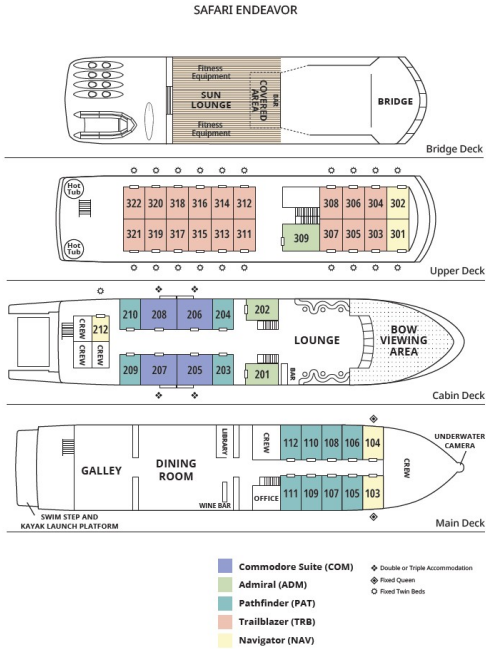


ok library.



wildearth-travel.com
info@wildearth-travel.com

INSIDE YOUR SHIP



Admiral



Admiral Cabin



Commodore Suite

Jr Commodore Cabin



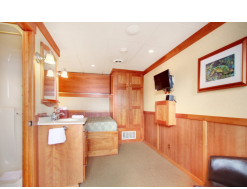
Jr Commodore Suite

Navigator



Navigator Cabin

Pathfinder



Wild Earth Travel

Small Ships, Big Adventures

wildearth-travel.com

info@wildearth-travel.com

PRICING

03-Sep-2025 to 15-Sep-2025

Navigator Cabin	7600 USD pp
Trailblazer	8300 USD pp
Admiral Cabin	9800 USD pp
Jr Commodore Cabin	10700 USD pp
Commodore Suite	12500 USD pp
Single Cabin	13300 USD pp

12-Sep-2025 to 24-Sep-2025

Navigator	8000 USD pp
Pathfinder Cabin	9800 USD pp
Admiral Cabin	11400 USD pp
Single Cabin	14000 USD pp

20-Sep-2025 to 02-Oct-2025

Navigator	6700 USD pp
Trailblazer	7400 USD pp
Pathfinder	8100 USD pp
Admiral	9100 USD pp
Jr Commodore Suite	10400 USD pp
Single Navigator	11700 USD pp
Commodore Suite	12500 USD pp

27-Sep-2025 to 09-Oct-2025

Navigator Cabin	6100 USD pp
Trailblazer Cabin	6700 USD pp
Pathfinder Cabin	7200 USD pp
Admiral Cabin	7900 USD pp
Single Navigator Cabin	10700 USD pp
Commodore Suite	11100 USD pp

13-Apr-2026 to 25-Apr-2026

Navigator	4700 USD pp
Trailblazer	5200 USD pp
Pathfinder	5700 USD pp
Admiral	6300 USD pp
Jr Commodore Suite	7300 USD pp
Single Navigator	8100 USD pp
Commodore Suite	8600 USD pp

27-Apr-2026 to 09-May-2026

Navigator Cabin	4300 USD pp
Trailblazer Cabin	4700 USD pp
Pathfinder Cabin	5100 USD pp
Admiral Cabin	5500 USD pp
Single Navigator Cabin	7600 USD pp
Commodore Suite	7800 USD pp



wildearth-travel.com

info@wildearth-travel.com

PRICING

03-May-2026 to 15-May-2026

Navigator	8000 USD pp
Pathfinder Cabin	9800 USD pp
Admiral Cabin	11400 USD pp
Single Cabin	14000 USD pp

03-Sep-2026 to 15-Sep-2026

Navigator Cabin	7600 USD pp
Trailblazer	8300 USD pp
Admiral Cabin	9800 USD pp
Jr Commodore Cabin	10700 USD pp
Commodore Suite	12500 USD pp
Single Cabin	13300 USD pp

11-Sep-2026 to 23-Sep-2026

Navigator	8000 USD pp
Pathfinder Cabin	9800 USD pp
Admiral Cabin	11400 USD pp
Single Cabin	14000 USD pp

19-Sep-2026 to 01-Oct-2026

Navigator	4700 USD pp
Trailblazer	5200 USD pp
Pathfinder	5700 USD pp
Admiral	6300 USD pp
Jr Commodore Suite	7300 USD pp
Single Navigator	8100 USD pp
Commodore Suite	8600 USD pp

26-Sep-2026 to 08-Oct-2026

Navigator Cabin	4300 USD pp
Trailblazer Cabin	4700 USD pp
Pathfinder Cabin	5100 USD pp
Admiral Cabin	5500 USD pp
Single Navigator Cabin	7600 USD pp
Commodore Suite	7800 USD pp

ADDITIONAL CHARGES:

Port Taxes 675 USD pp