

Wild Earth Travel

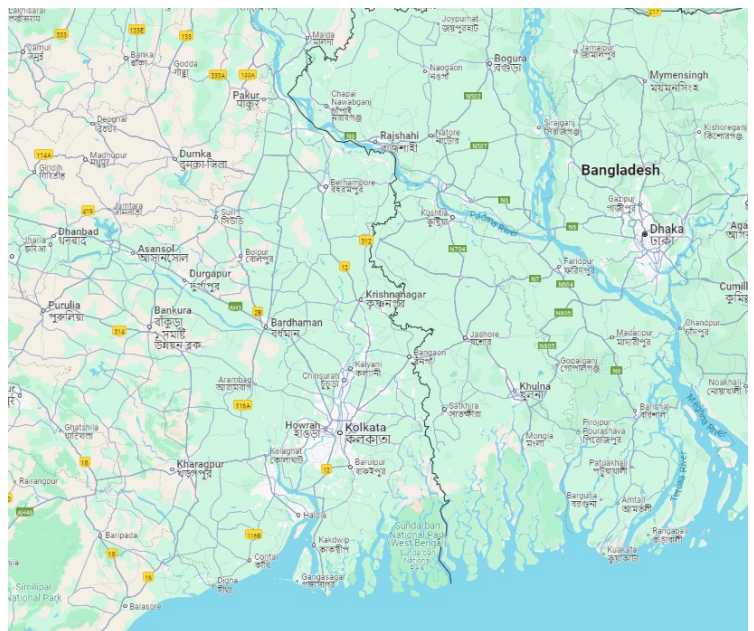
Small Ships, Big Adventures

wildearth-travel.com

info@wildearth-travel.com

GANGES MAXIMUM RIVER CRUISE - FROM THE BUDDHA TO THE RAJ

The itinerary begins with a midday embarkation from Kolkata, sailing past the historic Danish colony of Serampore and exploring Barrackpore's colonial landmarks. Travelers will visit the French settlement of Chandernagore and the impressive Imambara in Hooghly, before discovering Bengal's beautiful terracotta temples in Kalna and the brassworking village of Matiari. Historical sites like the battlefield of Plassey and the grand Hazarduari Palace in Murshidabad are highlights, along with the serene village of Baranagar and the scenic Hooghly River. An excursion to the ancient city of Gaur offers insights into its rich history, while visits to local markets and villages showcase rural life. The journey continues to Rajmahal, steeped in Mughal history, before concluding with explorations of rock carvings, a Buddhist monastery, and a picturesque waterfall in the Rajmahal Hills, ending with a train ride back to Kolkata.



ITINERARY

Day 1. Embark in Kolkata

You will be collected from your hotel late morning and taken to the jetty. Embark at midday on your ship and cruise past the old Danish colony of Serampore to Barrackpore, land and take a walk through the cantonment past the Semaphore Tower, Government House, the Temple of Fame, and Flagstaff House, its garden housing many of the British statues removed from central Calcutta.

Day 2. Chandernagore and the Imambara at Hooghly.

Sail up to Chandernagore, a French possession until 1950, and visit the 18th

Wild Earth Travel

Small Ships, Big Adventures

0800 945 3327 (within New Zealand) | +64 (0) 3 365 1355 | 1800 107 715 (within Australia)

info@wildearth-travel.com | wildearth-travel.com



Wild Earth Travel

Small Ships, Big Adventures

wildearth-travel.com

info@wildearth-travel.com

century church and Duplex's House containing a small museum. Sail on past the old Dutch settlement of Chinsura. Land to visit the imposing Imambara at Hooghly then reboard your ship and cruise upstream leaving urban sprawl behind. Sail into the night to a mooring near Kalna.

Day 3. Temples at Kalna and the temple of Mayapur

Land at the country town of Kalna and take rickshaws to see a group of some of Bengal's most attractive terracotta temples, as well as the unique Shiva temple with concentric rings made up of 108 shrinelets. Continue on through the countryside to Mayapur, its skyline dominated by the vast new ISKCON temple. Sail on through the night to a mooring near Matari.

Day 4. The brass working village of Matari and the battlefield of Plassey

This morning visit the brassworking village of Matari where you can see the whole primitive process of beating out brass water pots and other vessels. Later cruise on and visit the battlefield of Plassey where in 1757 Clive's defeat of Siraj-ud-Daulah changed the course of Indian history, finally mooring at Murshidabad.

Day 5. The tomb of Siraj-ud-Daulah and the Hazarduari Palace

Land and walk to the Khushbagh, a peaceful Moghul-style garden enclosing the tombs of Siraj-ud-Daulah and his family. Continue a little way upstream to where the Nawab's great Hazarduari Palace, built by an English architect

in 1837, dominates the waterfront. Inside are an extensive collection of pictures, china, weapons and other objects. Visit also the great Katra Mosque and drive out to two amazing buildings of the late 18th century, the Nashipara Palace and the Katgola Palace. Both were built in classical Georgian style by rich local merchants and represent the other side of the coin of the "White Moghul" period when English and Indian cultures came close to fusion. Overnight on the riverbank across from town.

Day 6. Baranagar temples and rural India

Moore at the delightful sleepy village of Baranagar with three gorgeous miniature terracotta temples to which you walk through the fields. This is rural India at its most idyllic. Continue up the Hooghly, here a charming waterway twisting and turning between banks lined with mustard fields and mango orchards. Carry on up a long canal section to a mooring close to the Farakka Barrage.

Day 7. The ancient city of Gaur

During breakfast we cruise to a mooring by the Farakka lock. Disembark and take a full day excursion by road to Gaur, near the town of Malda, or English Bazar. This quiet, deserted place was once one of India's great cities, first under the Hindus in 12th century, then as the muslim capital of Eastern India from the 14th to the 16th century. There are plentiful remains of mosques, palaces and gateways and you visit a number of the most interesting before rejoining the ship in the evening at Farakka.

Day 8. Farakka lock and village market

During the day, our ship will pass through the lock which raises it up to the course of the Ganges proper. You are taken to visit a nearby market, and to visit a delightful rural village. Alternatively at extra cost a full day itinerary can be made by road to Pandua and its Sultanate-period mosque.

Day 9. Rajmahal - Palaces, forts and mosque ruins

This morning we leave Farakka and sail out into the main stream of the River Ganges, almost sea-like here just above the Barrage. We sail upstream much of the morning, before anchoring at Rajmahal, beneath the Rajmahal Hills. Rajmahal is one of those places, so common in India, which feature in no guidebook and yet offer both interest and atmosphere; once known as Akbaragar, the town was founded by the Mughal Emperor Akbar as his eastern capital. Shah Jehan, builder of the Taj Mahal, spent much of his youth here. There are remains of palaces, forts and mosques submerged in vegetation which we shall explore. We sail on as far as Manihari Ghat.

Day 10. Idyllic Bateshwar

Wild Earth Travel

Small Ships, Big Adventures

0800 945 3327 (within New Zealand) | +64 (0) 3 365 1355 | **1800 107 715** (within Australia)

info@wildearth-travel.com | **wildearth-travel.com**



This morning continue cruising upriver, passing the confluence with the Kosi, coming down from Nepal and keeping a lookout for Gangetic dolphin, often seen here. We arrive at idyllic Bateshwar, with fine 6th century rock carvings, and from here we drive a short distance to the impressive ruins of the 8th century Buddhist monastery of Vikramshila. Reboarding, we sail down to anchor near the port of Sahibganj in the state of Jharkand. The impressive silhouette of the Rajmahal Hills, the only significant uplands anywhere along the course of the river between Kolkata and Varanasi, rises up outlined against the sunset.

Day 11. Moti Jharna waterfall &

We land and drive up into the Rajmahal Hills to see the impressive Moti Jharna waterfall, plunging 50m from an unspoilt glen to a pool which is only a little diminished by the concrete menagerie of Indian wildlife assembled around it. We also visit a village of the Santal people, a tribal community who have long survived in these remote hills, before returning to the ship to cruise down towards the Farakka Barrage again

Day 12. Farakka

Transfer to Farakka station for a 4 hour (approx.) train journey to Kolkata. Our representatives will meet you on arrival and transfer you to a city hotel.

Please Note:

Itineraries are subject to change.

YOUR SHIP: ABN RAJMAHAL

YOUR SHIP: ABN Rajmahal

VESSEL TYPE: River Boat

LENGTH: 50 meters

PASSENGER CAPACITY: 40

BUILT/REFURBISHED: 2014

ABN Rajmahal is a 50m long and powered by 3 engines; her extra-shallow draught and a lower profile than conventional designs allow her to cruise further upstream than any of her competitors.

ABN Rajmahal has 22 cabins: 14 spacious twin/double cabins on the upper deck; 4 twin/double cabins on the main deck; and 4 single cabins for which we charge no supplement. The decor is stylish and fresh with touches of colonial elegance, brought to life by traditional Indian-inspired designs on hand-blocked cotton fabrics. All cabins on ABN Rajmahal have French balconies.

As with the other ships in our fleet, there is a comfortable saloon and bar, dining room and a vast canopied sundeck. A small spa onboard offers a wide range of treatments. All cabins and public rooms on our ships are air-conditioned.

Food on board is a mixture of Assamese (milder than most Indian cuisine) and Continental cuisines. Wines, beer and spirits are available.

Onboard features

Spacious cabins with individual climate control

En suite shower/WC with Biotique toiletries

Generous cupboard space and under-bed storage

Hair drier in each cabin

Minibar in each cabin

In-room electronic safe

Tea/coffee making facilities in cabins

Intercommunication telephone in cabins

High quality bathrobes and slippers in cabins

Large sliding glass windows offering panoramic views of the river

Vast sundeck both open and shaded, with sunloungers or steamer chairs

Spacious air-conditioned saloon with library and recorded entertainment

Spa with choice of treatments.

Services

Shore excursion programme including all admissions

Maximum 20 guests per guide on all excursions

Naturalist onboard the vessel

Cold towel service after excursions

Welcome drink after excursions

Shoe-cleaning after excursions

Turndown service in all cabins

Expertly trained culinary staff

Single seating for buffet breakfast, lunch and dinner

Acclaimed combination of Indian & Western cuisines

Wide choice of wines, spirits and beer

Complimentary tea, coffee and mineral water throughout

Welcome reception

Farewell reception



Local on-board dance & song performances.



rformances.

Wild Earth Travel

Small Ships, Big Adventures

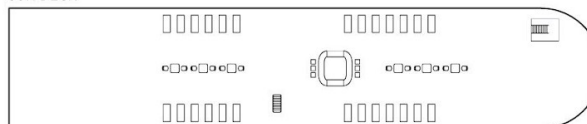
wildearth-travel.com

info@wildearth-travel.com

INSIDE YOUR SHIP

ABN RAJMAHAL

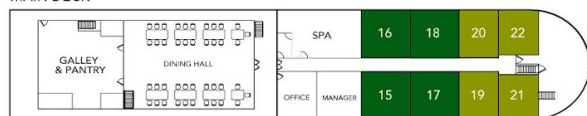
SUN DECK



UPPER DECK



MAIN DECK

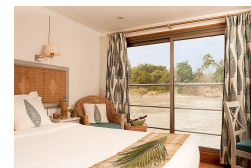


■ TWIN/DOUBLE CABIN (195.75 Sq. Ft.)
■ SINGLE CABIN (159.50 Sq. Ft.)

Main Deck Cabin



Main deck cabin for single occupancy



Upper Deck Cabin



Wild Earth Travel

Small Ships, Big Adventures

0800 945 3327 (within New Zealand) | +64 (0) 3 365 1355 | 1800 107 715 (within Australia)

info@wildearth-travel.com | wildearth-travel.com



PRICING

23-Oct-2025 to 05-Nov-2025

| | |
|--------------------------------------|-------------|
| Main Deck Cabin | 5830 USD pp |
| Main deck cabin for single occupancy | 5830 USD pp |
| Upper Deck Cabin | 6765 USD pp |

22-Jan-2026 to 02-Feb-2026

| | |
|--------------------------------------|-------------|
| Main Deck Cabin | 5830 USD pp |
| Main deck cabin for single occupancy | 5830 USD pp |
| Upper Deck Cabin | 6765 USD pp |