



GALAPAGOS NORTHEAST DIVERSITY & SOUTHEASTERN SECRETS - C + A

This 8-day Galapagos Islands cruise, starting at Baltra Airport on Santa Cruz Island and ending at San Cristobal Airport, offers a comprehensive exploration of the archipelago's northeastern and southeastern regions. Visiting Santa Cruz, Seymour, Santa Fe, South Plazas, Genovesa, San Cristobal, Española, and Floreana Islands, the itinerary blends snorkeling, hiking, and wildlife observation. Highlights include spotting iconic species like giant tortoises in the Santa Cruz Highlands, colorful land iguanas on South Plazas, and vibrant marine life at Kicker Rock. Guided excursions reveal unique sites like Floreana's historic Post Office Bay, Española's albatross colonies, and the Charles Darwin Station's conservation efforts, showcasing the Galapagos' extraordinary biodiversity and geological wonders.



ITINERARY

Day 1 - AM: AIRPORT (ARRIVAL) & PM: NORTH SEYMOUR

Embark on an unforgettable adventure to the Galapagos Islands, starting with your arrival at Baltra airport. Our expert naturalist guide from the National Park will eagerly await your arrival to introduce you to the wonders ahead.

Your journey continues with a morning visit to North Seymour Island, a spectacular showcase of the Galapagos Islands' diverse wildlife. This relatively flat island is home to a thriving population of blue-footed boobies and frigate birds. The trail winds its way through a forest of low, bushy vegetation, where you'll have the opportunity to witness the fascinating courtship dance of the blue-footed boobies. The island's coastline also allows one to observe sea lions and marine iguanas basking in the sun. The large frigate bird colonies are



0800 945 3327 (within New Zealand) | +64 (0) 3 365 1355 | **1800 107 715** (within Australia)

info@wildearth-travel.com | **wildearth-travel.com**



Wild Earth Travel

Small Ships, Big Adventures

wildearth-travel.com

info@wildearth-travel.com

a sight, especially when the males inflate their bright red throat pouches to attract mates.

Day 2 - AM: SANTA FE & PM: SOUTH PLAZA

Lead in the day with the stark beauty of Santa Fe, where the towering figures of giant Prickly-pear cacti strikingly contrast the rugged landscape of lava rocks. Tucked within one of the Galapagos most breathtaking bays, Santa Fe's turquoise waters, and white-sand beaches form an inviting residence for a sizable colony of sea lions you'll find lounging about. As you venture inland, remember to look down to spot the endemic Santa Fe land iguanas, but also glance upward to catch sight of the Galapagos hawks perched atop cacti, keeping a keen eye out for prey. You'll likely encounter Darwin finches, Galapagos doves, mockingbirds, and lively lava lizards along the trail.

Your afternoon destination is South Plazas, one of a twin pair of islands where the northern sibling is reserved exclusively for scientific research. Though petite in size, this islet brims with a fantastic array of wildlife. Upon landing, Galapagos land iguanas will welcome you from beneath prickly-pear cacti, eagerly awaiting their fruit. Sea lions populate the island in large numbers, allowing you to observe their fascinating social dynamics, from playful pups splashing in tide pools to formidable males protecting their territories. Your trail eventually leads you to a cliff, a vantage point to observe a myriad of seabirds, including frigatebirds, red-billed tropicbirds, boobies, swallow-tailed gulls, and pelicans. A verdant carpet of reddish succulent vegetation dotted with scattered cacti blankets the island, giving South Plazas a genuinely unique personality.

Day 3 - AM: BARRANCO & PM: DARWIN BAY

Located in the southern part of Darwin Bay on Genovesa Island, El Barranco is a wildlife sanctuary. Its fragile lava cliffs provide shelter for storm petrels and a remarkable population of short-eared owls. Along the trail, red-footed and Nazca boobies nest on the volcanic rock. At the base of the cliffs, Galapagos fur seals rest in shaded areas, while seabirds soar above this breathtaking landscape, making El Barranco an unforgettable destination for nature lovers.

Darwin Bay on Genovesa Island is a breathtaking sight for birdwatchers. As you step onto the beach, you'll be amazed by the presence of hundreds of boobies, gulls, and frigatebirds soaring, nesting in bushes, or resting on the sand. Along the shore, sea lions and marine iguanas blend into the scenery, while inland you may spot night herons, swallow-tailed gulls, Darwin finches,

Galapagos doves, and mockingbirds. This immersive experience brings you face-to-face with a thriving ecosystem.

Day 4 - AM: HIGHLANDS & PM: BACHAS BEACH

Your day begins with a journey to the highlands of San Cristobal Island, offering a different perspective of the Galapagos' unique ecosystem. This lush and verdant area contrasts sharply with the coastal zones. The highlands are home to a variety of bird species, giant tortoises in their natural habitat, and a rich array of plant life, including endemic trees and ferns. You'll have the opportunity to walk along paths that meander through this lush landscape, offering a chance to observe the giant tortoises up close and personal. The highlands also provide panoramic views of the island, showcasing its diverse topography.

End your Galapagos adventure at Bachas Beach, a key sea turtle nesting site from November to May. At low tide, remnants of WWII barges emerge from the white sand. Explore its saltwater lagoons, home to flamingos, herons, and aquatic birds. After this final stop, transfer to the airport for your flight back to the mainland, concluding an unforgettable journey.

Day 5 - AM: KICKER ROCK & PM: LOBOS ISLAND

In the afternoon, embark on an unforgettable panga (dinghy) ride around Kicker Rock, also known as Leon Dormido, off the coast of San Cristobal Island. This impressive rock formation, rising dramatically 500 feet above the ocean, is one of the most iconic landmarks in the Galapagos. The natural erosion of this ancient volcanic tuff cone has created a channel between two towering rock walls, providing a haven for various marine life. This peaceful and scenic panga ride around Kicker Rock provides a relaxing yet awe-inspiring conclusion to your day, allowing you to appreciate the natural wonders and rich biodiversity of the Galapagos from the sea.

Venture to Lobos Island, a tranquil islet secluded from San Cristobal by a slim channel. This nature's cradle, amidst a serene bay, is the playground for sea lion pups frolicking in tidal pools. The island might be modest in size, but it bursts with life, particularly with "lobos marinos" or sea lions. As you step ashore, welcoming committees of sea lions would greet you, only to be outraged by the male frigatebirds inland, presenting their inflamed red balloons amidst the verdant foliage. Stay vigilant for the blue-footed boobies nesting on the trails, ready to treat you to a display of their whimsical courtship dance.

Wild Earth Travel

Small Ships, Big Adventures

0800 945 3327 (within New Zealand) | +64 (0) 3 365 1355 | **1800 107 715** (within Australia)

info@wildearth-travel.com | **wildearth-travel.com**



Wild Earth Travel

Small Ships, Big Adventures

wildearth-travel.com

info@wildearth-travel.com

Day 6 - AM: SUAREZ POINT & PM: GARDNER BAY

Embark on an adventure to Suarez Point, one of the Galapagos' greatest natural wonders. This rocky trail is a haven for wildlife lovers, featuring an incredible array of species. Upon arrival, sea lions and marine iguanas welcome you as the first hosts of this nature spectacle. As you explore further, witness a vibrant mosaic of seabird colonies, from blue-footed and Nazca boobies to graceful frigatebirds and tropicbirds. The highlight of this journey is meeting the waved albatross, the island's largest bird, impressing visitors with its powerful flight and intricate courtship display (present from April to January).

Embrace the morning at Gardner Bay, a pristine piece of paradise in the Galapagos archipelago. Sugar-white coral sands merge with crystal-clear turquoise waters, creating a tropical oasis. Watch as the beach becomes a theatre, starring sun-basking sea lions in a playful performance. This idyllic setting invites you to stroll along the coast, immersing yourself in an enlightening experience as you delve into the biology of the endemic fauna - from the melodious Española mockingbird and the unique marine iguanas to the regal Galapagos hawks.

Day 7 - AM: CORMORANT POINT & PM: POST OFFICE BAY

Located in northern Floreana, Punta Cormorant is a paradise for nature lovers. Its coastal lagoon hosts flamingos, white-cheeked pintails, and black-necked stilts, while its white sand beach is a crucial nesting site for green sea turtles. In recent years, blue-footed boobies have started nesting along the trail. This is also a great site for spotting endemic plants. For snorkeling, Devil's Crown--a heavily eroded volcanic formation--offers an unparalleled experience, attracting reef sharks, rays, sea turtles, and massive schools of tropical fish.

Step into the past at Post Office Bay on Floreana, where sailors established a barrel-based mail system in the 1700s, still in use today. Beyond its historic charm, the bay was a key stop for whalers seeking freshwater and tortoises. This site also boasts a scenic beach, and incredible wildlife, including sea lions, green sea turtles, reef sharks, and, if luck is on your side, the elusive Galapagos penguin.

Day 8 - AM: CHARLES DARWIN STATION & PM: BALTRA AIRPORT (RETURN)

Explore the Charles Darwin Research Station, a center dedicated to wildlife conservation and research. Witness breeding programs helping restore giant tortoise populations, learn about projects tackling invasive species, and see conservationists working to protect the fragile Galapagos ecosystem.

Your Galapagos adventure comes to an end. Today, you will be transferred to Baltra Airport, where your National Park naturalist guide will assist you with final details before your flight back to mainland Ecuador. As you bid farewell to this paradise, take with you the unforgettable memories of one of the world's most extraordinary destinations.

Please note:

Itineraries are subject to change.

Wild Earth Travel

Small Ships, Big Adventures

wildearth-travel.com

info@wildearth-travel.com

YOUR SHIP: GALAXY

YOUR SHIP:	Galaxy
VESSEL TYPE:	Yacht
LENGTH:	35 meters
PASSENGER CAPACITY:	16
BUILT/REFURBISHED:	2007/2022

Live a unique experience and explore the Galapagos Islands aboard our renewed Galaxy Yacht Cruise, exclusivity and personalized service for your dreamed trip while exploring the Enchanted Islands.

RESTAURANT

Located on the main deck, where you can enjoy delicious and varied cuisine of national and international dishes, served as a menu and buffet. The options for vegetarians, vegans, gluten intolerant or others are to be informed before booking. With a capacity of accommodating 16 people, it also has a purified water station and hot drinks available 24 hours a day.

SOLARIUM

It is the ideal place to rest and relax in the lazy chairs, enjoying an incredible 360° view.

LOUNGE

Located on the main deck at the back of the boat, for your entertainment on board, the lounge has a TV, DVD player, small library and toy library. The windows give a beautiful light and a very appreciable view of the sea.

BAR

Located on the main deck, next to the lounge is the bar, where

you can enjoy different options of cocktails, national and international drinks, and local exotic juices.



tic juices.

Wild Earth Travel

Small Ships, Big Adventures

0800 945 3327 (within New Zealand) | +64 (0) 3 365 1355 | **1800 107 715** (within Australia)

info@wildearth-travel.com | **wildearth-travel.com**

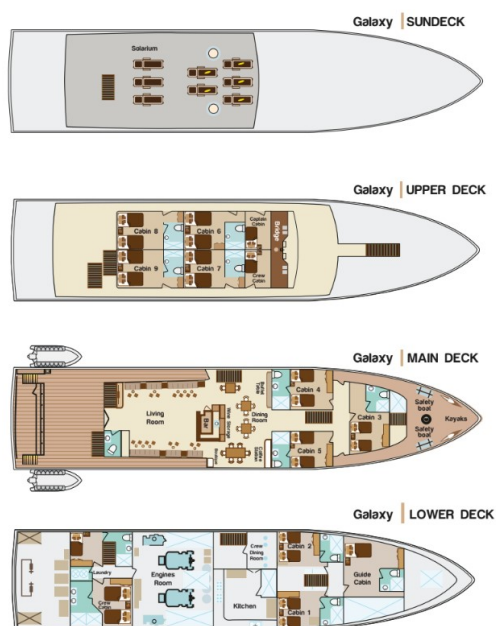
Wild Earth Travel

Small Ships, Big Adventures

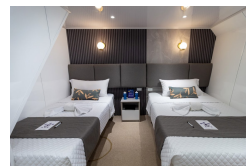
wildearth-travel.com

info@wildearth-travel.com

INSIDE YOUR SHIP



Cabin



Wild Earth Travel

Small Ships, Big Adventures

0800 945 3327 (within New Zealand) | +64 (0) 3 365 1355 | 1800 107 715 (within Australia)

info@wildearth-travel.com | wildearth-travel.com



Wild Earth Travel

Small Ships, Big Adventures

wildearth-travel.com

info@wildearth-travel.com

PRICING

08-Apr-2026 to 15-Apr-2026

Cabin	6100 USD pp
-------	-------------

04-Nov-2026 to 11-Nov-2026

Cabin	6100 USD pp
-------	-------------

22-Apr-2026 to 29-Apr-2026

Cabin	6100 USD pp
-------	-------------

18-Nov-2026 to 25-Nov-2026

Cabin	6100 USD pp
-------	-------------

06-May-2026 to 13-May-2026

Cabin	6100 USD pp
-------	-------------

02-Dec-2026 to 09-Dec-2026

Cabin	6100 USD pp
-------	-------------

03-Jun-2026 to 10-Jun-2026

Cabin	6100 USD pp
-------	-------------

17-Jun-2026 to 24-Jun-2026

Cabin	6100 USD pp
-------	-------------

01-Jul-2026 to 08-Jul-2026

Cabin	6100 USD pp
-------	-------------

15-Jul-2026 to 22-Jul-2026

Cabin	6100 USD pp
-------	-------------

29-Jul-2026 to 05-Aug-2026

Cabin	6100 USD pp
-------	-------------

12-Aug-2026 to 19-Aug-2026

Cabin	6100 USD pp
-------	-------------

26-Aug-2026 to 02-Sep-2026

Cabin	6100 USD pp
-------	-------------

21-Oct-2026 to 28-Oct-2026

Cabin	6100 USD pp
-------	-------------



Wild Earth Travel
Small Ships, Big Adventures

0800 945 3327 (within New Zealand) | +64 (0) 3 365 1355 | **1800 107 715** (within Australia)

info@wildearth-travel.com | **wildearth-travel.com**