

# Wild Earth Travel

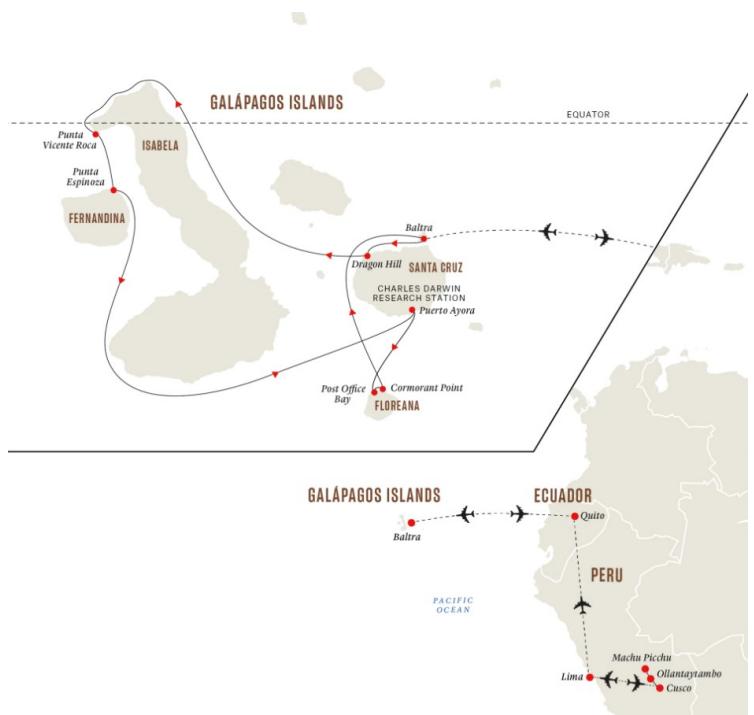
*Small Ships, Big Adventures*

[wildearth-travel.com](http://wildearth-travel.com)

[info@wildearth-travel.com](mailto:info@wildearth-travel.com)

## GALÁPAGOS ISLANDS — ICONIC WILDLIFE & SUBLIME SCENERY PLUS MACHU PICCHU

South America land adventure The first part of our adventure takes place on land. Setting off from Lima, Peru's vibrant capital, we'll fly to Cusco, the ancient centre of the Inca empire, and discover its many cultural and architectural wonders. Next, we travel up the Sacred Valley on a luxury train to the incredible mountain citadel of Machu Picchu before heading back to Cusco and then flying to charming Quito – the 'City of Eternal Spring'. Darwin's islands of evolution After exploring Quito's historic centre and visiting the Equator, we'll head to the Galápagos Islands for an unforgettable sea adventure. Your expedition cruise begins after a flight from Quito to Baltra Island in Galápagos for an incredible sea adventure. In the Galápagos Islands, you'll visit the isles of Isabela, Floreana, Fernandina and Santa Cruz islands, each a unique illustration of evolution in action. Experience an array of ecosystems within picturesque landscapes, and see famed wildlife such as marine iguanas, giant tortoises, Nazca Boobies and Darwin's iconic finches. Your ship, MS Santa Cruz II, is one of the few vessels operating in Galápagos that comes equipped with a full range of exploration tools, including panga boats, kayaks, snorkelling gear, stand-up paddleboards and even a glass-bottom boat.



### ITINERARY

#### DAY 1 Your land adventure begins

Start your adventure in ancient and modern Lima Welcome to Peru, one of the most fascinating countries in South America! If you have time after your arrival in Lima before settling in at your hotel for an overnight stay, we suggest you wander historical centre, which is packed with elegant Spanish colonial architecture, is a UNESCO World Heritage Site. Or why not walk along the oceanfront boardwalk in the upmarket Miraflores district. Here, you'll find many restaurants and cafés, as well as shops if you need to purchase anything ahead of your adventure. Lima is considered the food capital of Latin America, so be sure to try local dishes like ceviche, which is raw fish marinated in lime juice with onion and chilli.

Wild Earth Travel

*Small Ships, Big Adventures*

0800 945 3327 (within New Zealand) | +64 (0) 3 365 1355 | 1800 107 715 (within Australia)

[info@wildearth-travel.com](mailto:info@wildearth-travel.com) | [wildearth-travel.com](http://wildearth-travel.com)



# Wild Earth Travel

*Small Ships, Big Adventures*

**wildearth-travel.com**

**info@wildearth-travel.com**

## DAY 2 City of the Incas and a cultural gem

Explore the ancient seat of the Inca Empire In the morning, you'll take a flight to Cusco, the ancient seat of the Inca Empire. A local guide will take you to check in at your hotel, before inviting you on a guided tour of this enigmatic city. You'll see impressive Inca structures contrasted with ornate buildings from Spanish colonial times. Visit the 15th century ceremonial compound of Sacsayhuaman, or admire the architecture of the Spanish Santo Domingo church, a convent built on the ruins of Koricancha, the Inca Sun Temple. After your tour of the highlights of this cultural and architectural gem, we'll return to the hotel for dinner.

## DAY 3 Back in time to a lost world

Discover the lost city of the Incas An early morning transfer will take you to Ollantaytambo, in the Sacred Valley, from where you'll catch a train along the narrow-gauge line to Machu Picchu, passing through stunning highland scenery along the way. After around two hours, we'll stop at the small town of Aguas Calientes and take the short bus ride to Machu Picchu – the so-called Lost City of the Incas. You'll enjoy a guided tour of this once-hidden settlement, marvelling at the stonewalls, terraces and ramps that are carved into the mountain. You'll love the peaceful atmosphere of Machu Picchu as you gaze at the lowland jungle from this city in the clouds. After lunch, we'll return to Cusco where you'll enjoy your final night at the hotel.

## DAY 4 Quito – city of eternal spring

Discover the vibrant city of Quito The day begins with breakfast at your hotel. We'll then drive to the airport in Cusco for the morning flight via Lima to Ecuador. You'll arrive in Quito in the afternoon. Your journey begins on the Equator in the lush Andean foothills. At 9,350 feet, Quito is the second-highest capital city in the world, and its main draw is the exquisite Old Town which was founded on an ancient Inca settlement. A UNESCO World Heritage site, it's packed with well-preserved colonial architecture as evidenced in colourful plazas, magnificent churches and handsome monuments. Settle into your hotel, then head out to explore.

## DAY 5 Visit historic Quito

Straddle the Equator at the Middle of the World City Today you'll enjoy a guided tour of Quito's remarkable Old Town – one of the largest and best-preserved colonial-era quarters in South America. Wander through cobblestone streets as you admire the architecture – and sample some delicious chocolate made from finest Ecuadorian cacao along the way. Next, you'll head to the iconic 'Middle of the World City', located around 16 miles north of Quito. After lunch, you'll visit the famous monument that delineates

the imaginary line of the Equator. Have your camera ready to capture the moment you stand with one foot in each hemisphere.

## DAY 6 Your cruise begins

Get ready to explore the spectacular Galápagos Islands After breakfast, a short flight will take you to Baltra Island in the spectacular Galápagos archipelago. A transfer brings you straight to the port where your comfortable expedition ship MS Santa Cruz II awaits. In the afternoon we'll begin our exploration of the Galápagos Islands following the north shore of Santa Cruz towards the fascinating landscapes of Cerro Dragón – Dragon Hill – where we'll land. The first part of the walk here passes by a brackish lagoon that's frequented by shorebirds and American Flamingos. Further inland, the trail offers a beautiful view of the bay and the western islands of the archipelago, as well as a chance to get a first look at some land iguanas.

## DAY 7 Wildlife-rich Isabela and Fernandina

Scan the coastline and seas for iconic species You'll start your day at Punta Vicente Roca, on the north-western tip of Isabela Island. After breakfast, we'll explore the coast by panga boat, learning about the dramatic geology of the area from your naturalist guides. This site is a nesting place for several bird species, so look out for Flightless Cormorants, Galápagos Penguins, and boobies. Weather permitting, you'll get to snorkel alongside the cliffs, where you might find green sea turtles, oceanic sun fish, and fur seals. In the afternoon, we'll explore Fernandina, an island with a unique ecology and a big population of marine iguanas. Scan the coast for sea lions, Sally Lightfoot crabs, hawks and penguins.

## DAY 8 Darwin's Santa Cruz

Meet the famous giant tortoises of Galápagos Today, you'll explore Santa Cruz Island. In the morning, we'll disembark at Puerto Ayora to visit the Charles Darwin Research Station. A giant tortoise breeding centre, here you can see recently hatched tortoises and Darwin's famous finches – the birds he used as a basis for his theory of evolution by natural selection. There's also an impressive forest of prickly pear cacti that's home to many land birds. Enjoy a cooler climate over lunch in the lush highlands, where giant tortoises shuffle about munching on grass and wallowing in pools. You'll have time for another activity, including mountain biking or visiting a sugar plantation.

## DAY 9 Picturesque Floreana

Discover Galápagos history and underwater wildlife After breakfast, you'll enjoy a panga boat ride among the channels on Floreana's north shore, before taking in the incredible views of the island from Baroness Cove. Later on, we'll

Wild Earth Travel

*Small Ships, Big Adventures*

**0800 945 3327** (within New Zealand) | +64 (0) 3 365 1355 | **1800 107 715** (within Australia)

info@wildearth-travel.com | wildearth-travel.com





# Wild Earth Travel

*Small Ships, Big Adventures*

**wildearth-travel.com**

**info@wildearth-travel.com**

land at Post Office Bay to visit the historic barrel that has served as a post office in the archipelago for over two centuries. After lunch, you'll explore the wonders around Champion Islet in a panga boat or aboard our glass-bottom boat. Here, you can snorkel in one of the best spots in the archipelago. From there, it's onwards to Cormorant Point, where we'll take a walk from an olivine-crystal beach to a brackish lagoon, where you can commonly see American Flamingos, Pintail Ducks and more.

## DAY 10 Back to Baltra

Your adventure comes to an end As your expedition cruise comes to a close, it's time to bid farewell to the wildlife and scenery of one of the world's most incredible nature destinations. We'll also say farewell to our wonderful crew and naturalist guides as we disembark at Baltra Island. A transfer will take you to the airport in Baltra for your flight to Quito to connect to your international flight, or if you prefer, continue to Guayaquil for another adventure. To explore more of Ecuador, why not extend your stay and join one of our optional Post-Programmes.

### Please Note:

Itineraries are subject to change.



# Wild Earth Travel

*Small Ships, Big Adventures*

**wildearth-travel.com**

**info@wildearth-travel.com**

## YOUR SHIP: SANTA CRUZ II

<b>YOUR SHIP:</b>	<b>Santa Cruz II</b>
<b>VESSEL TYPE:</b>	<b>Expedition Vessel</b>
<b>LENGTH:</b>	<b>71.8 meters</b>
<b>PASSENGER CAPACITY:</b>	<b>90</b>
<b>BUILT/REFURBISHED:</b>	<b>2002 / 2015 / 2018 / 2021</b>

When you are exploring the Galapagos islands with us onboard the MS Santa Cruz II, you will enjoy a relaxed atmosphere in high quality surroundings. The small size - with a guest capacity of maximum of 90 allows for a cozy yet classy environment. You'll easily feel at home on board.

### Gastronomic delights

Mouthwatering meals and creative cocktails await you aboard MS Santa Cruz II. With creativity and dedication, our cheerful staff draw inspiration from everything from the weather to the region's flavours and local ingredients.

### Beagle Restaurant - Incredible Dining Experience

The MS Santa Cruz II has a team of trained staff members that utilize locally-sourced organic food to prepare every dish. This ship provides a Le Cordon Bleu (a trained Gastronomy Director) and a wide variety of culinary experiences that encompass all diets and preferences. Each and every meal served onboard is exquisite.

### Panorama bar & lounge

This large and well-lit area is not only the main bar, but also the place where most ship events will take place (welcome and farewell cocktail), and doubles as an ideal place for lectures. It's

the ideal site to chill and relax with Wi-Fi hot spot and direct access to our alfresco terrace.

### Luxury living

Your ship gives you everything you could wish for in a home away from home: places for stimulation, relaxation, and meetings with your fellow guests. With a Scandinavian-inspired decor and all modern conveniences, MS Santa Cruz II does it in comfort and style.

### Expedition lounge & bar with Science Corner and library

Facing the front of the ship, the Expedition Lounge - complete with a refreshment station and library - is a fantastic place to admire the beauty of the Galapagos' Islands from inside. The Science Corner includes a glass cabinet, a microscope and a whale vertebrae clone, a perfect learning zone about our science activities.

### Sky deck

The Sky deck offers spaces where guests can relax and enjoy their Galapagos expeditions basking in the sun at the very top of the ship. The sun deck and fitness room are located here.

### Wellness and workouts

Whenever you feel the need to get your body moving, exercise facilities are on hand to get your pulse up. And whether you're relaxing after a day of fascinating lectures, or a long hike, there'll be plenty of opportunities to relax your body and mind.

### Fitness Room

Our fitness center is equipped with yoga mats, set of weights, 2 treadmills, 2 stationary bikes, and an elliptical trainer for those guests who do not want to let their routine slide.

### Hot Tub



Wild Earth Travel  
*Small Ships, Big Adventures*

**0800 945 3327** (within New Zealand) | +64 (0) 3 365 1355 | **1800 107 715** (within Australia)

info@wildearth-travel.com | **wildearth-travel.com**



# Wild Earth Travel

*Small Ships, Big Adventures*

**wildearth-travel.com**

**info@wildearth-travel.com**

For a nice relaxing time our two hot tubs with capacity for 5 guests each. Located on the Expedition deck are ideal.



are ideal.



Wild Earth Travel

*Small Ships, Big Adventures*

**0800 945 3327** (within New Zealand) | +64 (0) 3 365 1355 | **1800 107 715** (within Australia)

info@wildearth-travel.com | **wildearth-travel.com**



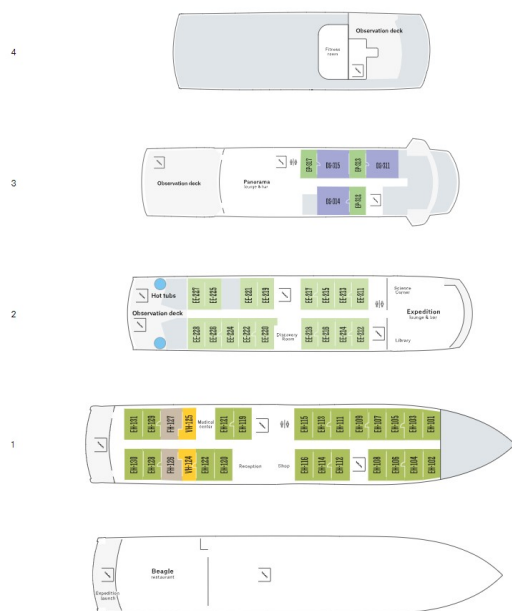
# Wild Earth Travel

*Small Ships, Big Adventures*

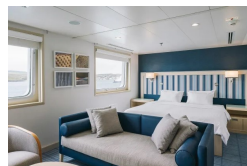
[wildearth-travel.com](http://wildearth-travel.com)

[info@wildearth-travel.com](mailto:info@wildearth-travel.com)

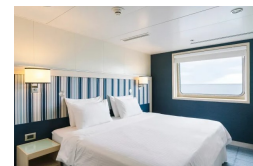
## INSIDE YOUR SHIP



Darwin Suite



Explorer cabin



Wild Earth Travel  
*Small Ships, Big Adventures*

0800 945 3327 (within New Zealand) | +64 (0) 3 365 1355 | 1800 107 715 (within Australia)

[info@wildearth-travel.com](mailto:info@wildearth-travel.com) | [wildearth-travel.com](http://wildearth-travel.com)

# Wild Earth Travel

*Small Ships, Big Adventures*

**wildearth-travel.com**

**info@wildearth-travel.com**

## PRICING

### 26-Mar-2026 to 03-Apr-2026

Explorer cabin	17370 AUD pp
Darwin Suite	21134 AUD pp

### 09-Apr-2026 to 17-Apr-2026

Explorer cabin	17370 AUD pp
Darwin Suite	21134 AUD pp

### 23-Apr-2026 to 01-May-2026

Explorer cabin	17370 AUD pp
Darwin Suite	21134 AUD pp

### 07-May-2026 to 15-May-2026

Explorer cabin	17370 AUD pp
Darwin Suite	21134 AUD pp

### 21-May-2026 to 29-May-2026

Explorer cabin	17370 AUD pp
Darwin Suite	21134 AUD pp

### 04-Jun-2026 to 12-Jun-2026

Explorer cabin	17370 AUD pp
Darwin Suite	21134 AUD pp

### 18-Jun-2026 to 26-Jun-2026

Explorer cabin	17370 AUD pp
Darwin Suite	21134 AUD pp

### 02-Jul-2026 to 10-Jul-2026

Explorer cabin	17370 AUD pp
Darwin Suite	21134 AUD pp

### 16-Jul-2026 to 24-Jul-2026

Explorer cabin	17370 AUD pp
Darwin Suite	21134 AUD pp

### 30-Jul-2026 to 07-Aug-2026

Explorer cabin	17370 AUD pp
Darwin Suite	21134 AUD pp

### 13-Aug-2026 to 21-Aug-2026

Explorer cabin	17370 AUD pp
Darwin Suite	21134 AUD pp

### 27-Aug-2026 to 04-Sep-2026

Explorer cabin	17370 AUD pp
Darwin Suite	21134 AUD pp

### 10-Sep-2026 to 18-Sep-2026

Explorer cabin	17370 AUD pp
Darwin Suite	21134 AUD pp

### 24-Sep-2026 to 02-Oct-2026

Explorer cabin	17370 AUD pp
Darwin Suite	21134 AUD pp

### 08-Oct-2026 to 16-Oct-2026

Explorer cabin	17370 AUD pp
Darwin Suite	21134 AUD pp

Wild Earth Travel

*Small Ships, Big Adventures*

**0800 945 3327** (within New Zealand) | +64 (0) 3 365 1355 | **1800 107 715** (within Australia)

info@wildearth-travel.com | wildearth-travel.com



# Wild Earth Travel

*Small Ships, Big Adventures*

**wildearth-travel.com**

**info@wildearth-travel.com**

**22-Oct-2026 to 30-Oct-2026**

Explorer cabin	17370 AUD pp
----------------	--------------

Darwin Suite	21134 AUD pp
--------------	--------------

**05-Nov-2026 to 13-Nov-2026**

Explorer cabin	17370 AUD pp
----------------	--------------

Darwin Suite	21134 AUD pp
--------------	--------------

**19-Nov-2026 to 27-Nov-2026**

Explorer cabin	17370 AUD pp
----------------	--------------

Darwin Suite	21134 AUD pp
--------------	--------------

**Wild Earth Travel**

*Small Ships, Big Adventures*

**0800 945 3327** (within New Zealand) | +64 (0) 3 365 1355 | **1800 107 715** (within Australia)

info@wildearth-travel.com | **wildearth-travel.com**





# Wild Earth Travel

*Small Ships, Big Adventures*

**wildearth-travel.com**

**info@wildearth-travel.com**

## PRICING

### 03-Dec-2026 to 11-Dec-2026

Explorer cabin	17370 AUD pp
----------------	--------------

Darwin Suite	21134 AUD pp
--------------	--------------

### 17-Dec-2026 to 25-Dec-2026

Explorer cabin	18286 AUD pp
----------------	--------------

Darwin Suite	22454 AUD pp
--------------	--------------

**Wild Earth Travel**

*Small Ships, Big Adventures*

**0800 945 3327** (within New Zealand) | +64 (0) 3 365 1355 | **1800 107 715** (within Australia)

info@wildearth-travel.com | **wildearth-travel.com**