

Wild Earth Travel

Small Ships, Big Adventures

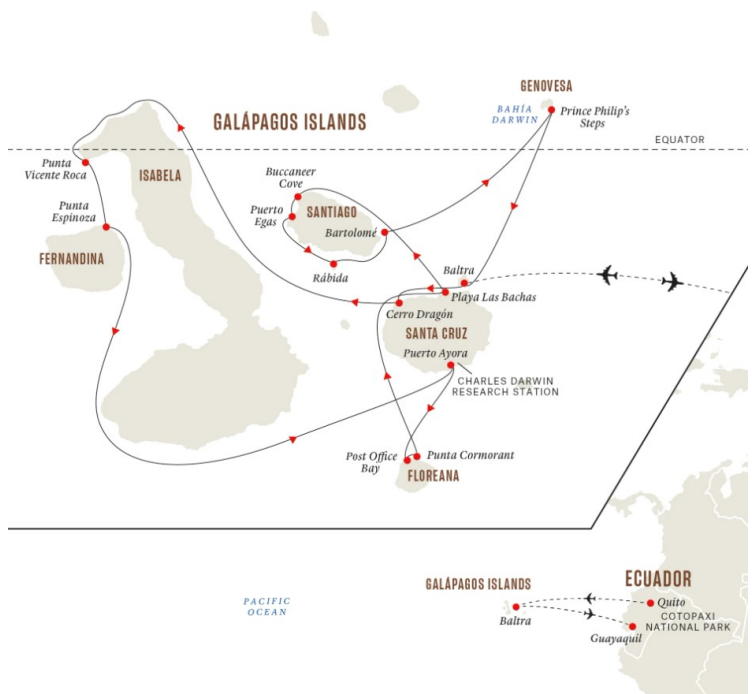
wildearth-travel.com

info@wildearth-travel.com

GALAPAGOS ISLANDS EXPEDITION CRUISE - NINE OF THE BEST ISLES

Beautiful Quito and volcano adventure Begin your adventure with two nights at a hotel in Quito, one of South America's most charming capitals. This World Heritage city of graceful Spanish-era architecture is packed with cosy restaurants and small artisanal shops. From here we'll journey to an active volcano and go on a nature walk in stunning surroundings, stopping to pay a visit to a vibrant traditional open-air market. Darwin's islands of evolution The Galápagos Islands are famed for their association with the evolutionary theorist Charles Darwin. Our comprehensive itinerary calls at the centrally-located Santa Cruz Island, the volcanic island of Fernandina, Isabela and Floreana - two of the four islands visited by Darwin - and balmy Baltra, before continuing to Santiago, the adjacent islands of Rábida and Bartolomé, and isolated Genovesa. The landings take in a wide variety of ecosystems and picturesque landscapes, and provide great opportunities for seeing wildlife such as sea lions, turtles, marine iguanas, giant tortoises, flamingos and iconic Darwin's Finches. Your expedition ship - MS Santa Cruz II MS Santa Cruz II's crafted itineraries give you some of the best island coverage and wildlife viewing opportunities in the Galápagos. Many excursions take place at exclusive visitor sites, meaning we'll often have entire areas to ourselves. Having multiple naturalist guides aboard Santa Cruz II also means you'll be able to choose from a wider range of activities each day. Your ship is also one of the few vessels operating in Galápagos that comes equipped with a full range of exploration tools, including dinghies, kayaks, snorkelling gear and paddleboards. There's even a glass-bottom boat. Of course, safety and sustainability are paramount

throughout your cruise, and there's a 24-hour Medical Officer onboard at all times.



all times.

ITINERARY

DAY 1 Arrive in the city of eternal spring, get your bearings and relax after your journey.

Your journey of discovery begins on the equator in the lush Andean foothills. At 9,350 ft, Quito is the second-highest capital city in the world, and its main draw is the exquisite Old Town which was founded on an ancient Inca settlement. A UNESCO World Heritage site, it's packed with well-preserved

Wild Earth Travel

Small Ships, Big Adventures

0800 945 3327 (within New Zealand) | +64 (0) 3 365 1355 | **1800 107 715** (within Australia)

info@wildearth-travel.com | **wildearth-travel.com**



Wild Earth Travel

Small Ships, Big Adventures

wildearth-travel.com

info@wildearth-travel.com

colonial architecture, including colourful plazas, magnificent churches and handsome monuments. If you have enough time in the evening, make sure to visit the Calle La Ronda, an ancient pedestrianised street with links to the poets and artists who've lived here. It's lined with shops and cafes, and there are many handicrafts available to buy. Pre-Programmes Why not experience another highlight of South America and discover the lost civilisation of the Incas, including the breathtaking mountain stronghold of Machu Picchu. This optional 4-day Pre-Programme starts in Lima and ends in Quito. Or arrive in Quito a few days early and join us instead on a 4-day tour to Cloudforest Lodge in the Mashpi Reserve. The area is part of the Ecuadorian Choco rainforest, one of the world's greatest biodiversity hotspots. This optional extension is also available as a Post-Programme.

DAY 2 Get a taste for Ecuador with a visit to a traditional market and a trip to Cotopaxi Volcano.

Today you'll visit Cotopaxi National Park, home to one of South America's most active volcanoes. But first, you'll stop at the photogenic Sangolquí open-air market, where you can browse colourful stalls with unique handicrafts, and sample different local specialities. Afterwards, we'll walk to Limpiopungo Lagoon, tucked in a high valley within the Cotopaxi National Park at 12,800 ft above sea level. Spot herds of llamas on the slopes and keep your eyes open for birds such as the Andean Gull, several species of hummingbird and – with luck – the majestic Andean Condor. You'll enjoy a tasty lunch prepared by some of the region's best chefs before returning to your hotel in the late afternoon.

DAY 3 Fly away from the mainland to the Galápagos Islands and have your first wildlife encounter.

After breakfast, a short flight will take you to Baltra Island in the spectacular Galápagos archipelago. A transfer brings you straight to the port where your comfortable expedition ship MS Santa Cruz II awaits. In the afternoon we'll begin our exploration of the Galápagos Islands following the north shore of Santa Cruz towards the fascinating landscapes of Cerro Dragón - or Dragon Hill - where we'll land. The first part of the walk here passes by a brackish water lagoon that's frequented by shorebirds and American Flamingos. Further inland, the trail offers a beautiful view of the bay and the western islands of the archipelago, as well as a chance to get a first look at some land iguanas.

DAY 4 Explore the coast by dinghy and set foot on the island of the marine iguanas.

You'll start your day at Punta Vicente Roca, on the north-western tip of Isabela Island. After breakfast, we'll explore the coast by dinghy, learning about the

dramatic geology of the area from our naturalist guides. This site is a nesting place for several bird species, so look out for flightless cormorants, Galápagos penguins, and boobies. Weather permitting, you'll get to snorkel alongside the cliffs, where you might find green sea turtles, oceanic sun fish, and even fur seals. In the afternoon, we'll explore Fernandina, an island with a unique environment and a high density of marine iguanas. Scan the coast for sea lions, Sally lightfoot crabs, hawks and penguins.

DAY 5 Meet the famous giant tortoises of Galápagos at the Charles Darwin Research Station.

Today, you'll explore Santa Cruz Island. In the morning, we'll disembark at Puerto Ayora to visit the Charles Darwin Research Station. The Station consists of a giant tortoise breeding centre and an impressive forest of prickly-pear cacti that's home to many land birds. It also serves as the headquarters for scientific investigation, conservation and the National Park administration. After the visit, we'll head up to the cooler highlands of Santa Cruz Island for lunch. You'll have several options to choose from in the afternoon, which you can decide on beforehand with your Expedition Leader. At the end of the afternoon's activities, you'll return to Puerto Ayora and re-join MS Santa Cruz II.

DAY 6 Discover a bit of Galápagos history and look out for some underwater wildlife.

After breakfast, you'll enjoy a dinghy ride among the channels on Floreana's north shore, before taking in the incredible views of the island from Baroness Cove. Later on, we'll land at Post Office Bay to visit the historic barrel that has served as a post office in the archipelago for over two centuries. After lunch, you'll explore the underwater wonders around Champion Islet in a dinghy or aboard a glass-bottom boat. Here, you can snorkel in one of the best spots in the archipelago. From there, it's onwards to Cormorant Point, where we'll take a walk from an olivine-crystal beach to a brackish lagoon, where you can see American Flamingos, Pintail Ducks, and other birds.

DAY 7 Relaxation day at Santa Cruz. Recharge your batteries and lounge on Las Bachas beach.

Relax on board while we anchor off Baltra Island. After four days of exploring the unique nature and environments of Galápagos, it is the moment to pause for a while and recharge your batteries for the days ahead. Make us of the many onboard facilities, flick through the books on the library or exercise in the gym - it's up to you. In the afternoon, we'll land at Las Bachas beach located on Santa Cruz Island. This glorious white beach with turquoise waters is a great place to spot iconic Galápagos wildlife like flamingos and sea turtles. Enjoy

Wild Earth Travel

Small Ships, Big Adventures

0800 945 3327 (within New Zealand) | +64 (0) 3 365 1355 | **1800 107 715** (within Australia)

info@wildearth-travel.com | wildearth-travel.com



Wild Earth Travel

Small Ships, Big Adventures

wildearth-travel.com

info@wildearth-travel.com

some swimming or snorkelling before heading back to the ship for an expedition briefing about the following day and dinner.

DAY 8 Explore Santiago Island and see its wild residents and impressive rock formations.

Today you'll explore Santiago Island's pristine beaches and picturesque landscapes. Take in the impressive cliffs of Buccaneer Cove on the northwest coast, home to a large number of marine birds and sea lions. Immerse yourself in the scenery through a range of water activities and marvel at fantastic rock formations such as 'Elephant Rock' and 'The Bishop.' In the afternoon, we'll head to Puerto Egas, one of the best visitor sites on the island. You'll have the opportunity to see a colony of fur-sea lions and exotic birdlife on an excursion. Or you could just swim or snorkel along the rocky shorelines, typically, in the company of marine turtles.

DAY 9 See some amazing wildlife and beautiful landscapes, and try out the glass bottom boat.

Your day starts on tiny Rábida Island, located off the southern shore of Santiago. You can go for a thrilling dinghy ride along the coast or join an excursion exploring the island's mesmerising, red-coloured beach. Soak up the sights and sounds made by a colony of sea lions, and spot marine iguanas, mockingbirds, Yellow Warblers and several species of Darwin's Finches. In the afternoon, we'll sail to the golden sands of Bartolomé Island, dominated by the imposing Pinnacle Rock. You can swim or snorkel off the beach here or discover colourful marine life from our glass-bottom boat, and spot Galápagos Penguins on the shore. Hike up to the summit of the island for fantastic views.

DAY 10 Start the morning with a climb to really see this paradise for birdlife.

Today you'll explore Genovesa Island. The morning starts with a steep but short climb – only 90 ft – up a flight of steps to reach a flat and rocky plateau. Once there, you can walk along comfortably and check out large colonies of Nazca Boobies, Red-footed Boobies, Great Frigatebirds and Storm Petrels. Afterwards or instead, hop into a kayak for some aquatic adventuring! In the afternoon, we'll land at the beautiful beach that fringes Darwin Bay for a swim. Following this refreshing dip, take a stroll and observe hundreds of island birds, or alternatively just take it easy on the beach, swimming, snorkelling or kayaking.

DAY 11 It's the end of your cruise, so enjoy a slow goodbye at the giant tortoise sanctuary.

We start our last morning on the north shore of Santa Cruz Island. After breakfast, your luggage will be taken to the airport, while you visit the Tortoise Reserve. A dry landing at a passenger's wharf and a bus ride to the loftier region of the island will provide the last highlight of the cruise: giant tortoises in the wild. The windward slopes of the island are home to two species of giant tortoise. These lush highlands include dense forests of Galápagos daisies, orchids and bromeliads, and several endemic land birds. After this visit we'll transfer directly to Baltra Airport for your flight to Guayaquil and home - or you'll continue to Quito for another adventure. Post-Programmes Explore more of Ecuador with one of our optional Post-Programmes. Join us as we travel to Napo River, in the heart of the Ecuadorian Amazon. Fly to Coca and spend three nights in a lodge surrounded by the beautiful rainforest and observe and learn about the flora and fauna on selected activities. Or instead, travel from Quito to the Mashpi Reserve, a unique habitat and ecosystem. Here you'll enjoy a 3-night stay in luxurious Cloudforest Lodge and discover this breathtaking area (also available as a Pre-Programme). Both post-programmes have two nights in Quito included.

Please Note:

Itineraries are subject to change.



Wild Earth Travel

Small Ships, Big Adventures

wildearth-travel.com

info@wildearth-travel.com

YOUR SHIP: SANTA CRUZ II

YOUR SHIP:	Santa Cruz II
VESSEL TYPE:	Expedition Vessel
LENGTH:	71.8 meters
PASSENGER CAPACITY:	90
BUILT/REFURBISHED:	2002 / 2015 / 2018 / 2021

When you are exploring the Galapagos islands with us onboard the MS Santa Cruz II, you will enjoy a relaxed atmosphere in high quality surroundings. The small size - with a guest capacity of maximum of 90 allows for a cozy yet classy environment. You'll easily feel at home on board.

Gastronomic delights

Mouthwatering meals and creative cocktails await you aboard MS Santa Cruz II. With creativity and dedication, our cheerful staff draw inspiration from everything from the weather to the region's flavours and local ingredients.

Beagle Restaurant - Incredible Dining Experience

The MS Santa Cruz II has a team of trained staff members that utilize locally-sourced organic food to prepare every dish. This ship provides a Le Cordon Bleu (a trained Gastronomy Director) and a wide variety of culinary experiences that encompass all diets and preferences. Each and every meal served onboard is exquisite.

Panorama bar & lounge

This large and well-lit area is not only the main bar, but also the place where most ship events will take place (welcome and farewell cocktail), and doubles as an ideal place for lectures. It's

the ideal site to chill and relax with Wi-Fi hot spot and direct access to our alfresco terrace.

Luxury living

Your ship gives you everything you could wish for in a home away from home: places for stimulation, relaxation, and meetings with your fellow guests. With a Scandinavian-inspired decor and all modern conveniences, MS Santa Cruz II does it in comfort and style.

Expedition lounge & bar with Science Corner and library

Facing the front of the ship, the Expedition Lounge - complete with a refreshment station and library - is a fantastic place to admire the beauty of the Galapagos' Islands from inside. The Science Corner includes a glass cabinet, a microscope and a whale vertebrae clone, a perfect learning zone about our science activities.

Sky deck

The Sky deck offers spaces where guests can relax and enjoy their Galapagos expeditions basking in the sun at the very top of the ship. The sun deck and fitness room are located here.

Wellness and workouts

Whenever you feel the need to get your body moving, exercise facilities are on hand to get your pulse up. And whether you're relaxing after a day of fascinating lectures, or a long hike, there'll be plenty of opportunities to relax your body and mind.

Fitness Room

Our fitness center is equipped with yoga mats, set of weights, 2 treadmills, 2 stationary bikes, and an elliptical trainer for those guests who do not want to let their routine slide.

Hot Tub



Wild Earth Travel
Small Ships, Big Adventures

0800 945 3327 (within New Zealand) | +64 (0) 3 365 1355 | **1800 107 715** (within Australia)

info@wildearth-travel.com | **wildearth-travel.com**



Wild Earth Travel

Small Ships, Big Adventures

wildearth-travel.com

info@wildearth-travel.com

For a nice relaxing time our two hot tubs with capacity for 5 guests each. Located on the Expedition deck are ideal.



are ideal.



Wild Earth Travel

Small Ships, Big Adventures

0800 945 3327 (within New Zealand) | +64 (0) 3 365 1355 | **1800 107 715** (within Australia)

info@wildearth-travel.com | **wildearth-travel.com**

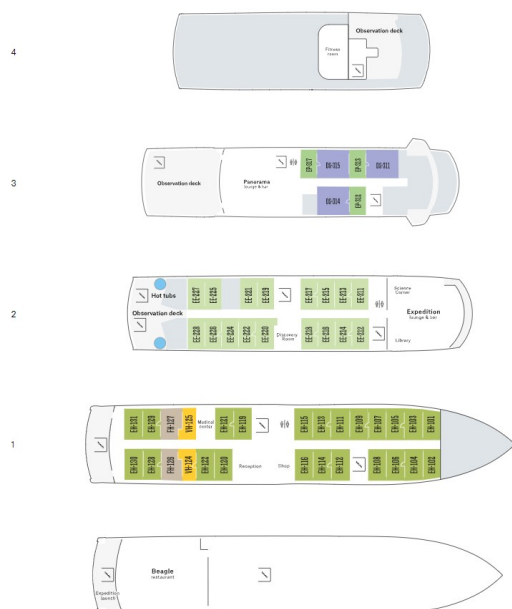
Wild Earth Travel

Small Ships, Big Adventures

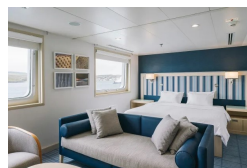
wildearth-travel.com

info@wildearth-travel.com

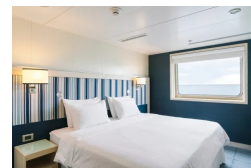
INSIDE YOUR SHIP



Darwin Suite



Explorer cabin



Wild Earth Travel
Small Ships, Big Adventures

0800 945 3327 (within New Zealand) | +64 (0) 3 365 1355 | 1800 107 715 (within Australia)

info@wildearth-travel.com | wildearth-travel.com

Wild Earth Travel

Small Ships, Big Adventures

wildearth-travel.com

info@wildearth-travel.com

PRICING

24-Jun-2025 to 04-Jul-2025

Explorer cabin	15786 AUD pp
Darwin Suite	21747 AUD pp

08-Jul-2025 to 18-Jul-2025

Explorer cabin	15786 AUD pp
Darwin Suite	21747 AUD pp

22-Jul-2025 to 01-Aug-2025

Explorer cabin	15786 AUD pp
Darwin Suite	21747 AUD pp

05-Aug-2025 to 15-Aug-2025

Explorer cabin	15786 AUD pp
Darwin Suite	21747 AUD pp

19-Aug-2025 to 29-Aug-2025

Explorer cabin	15786 AUD pp
Darwin Suite	21747 AUD pp

02-Sep-2025 to 12-Sep-2025

Explorer cabin	15445 AUD pp
Darwin Suite	21255 AUD pp

16-Sep-2025 to 26-Sep-2025

Explorer cabin	15445 AUD pp
Darwin Suite	21255 AUD pp

30-Sep-2025 to 10-Oct-2025

Explorer cabin	15445 AUD pp
Darwin Suite	21255 AUD pp

14-Oct-2025 to 24-Oct-2025

Explorer cabin	15445 AUD pp
Darwin Suite	21255 AUD pp

28-Oct-2025 to 07-Nov-2025

Explorer cabin	15445 AUD pp
Darwin Suite	21255 AUD pp

11-Nov-2025 to 21-Nov-2025

Explorer cabin	15445 AUD pp
Darwin Suite	21255 AUD pp

25-Nov-2025 to 05-Dec-2025

Explorer cabin	15445 AUD pp
Darwin Suite	21255 AUD pp

09-Dec-2025 to 19-Dec-2025

Explorer cabin	15445 AUD pp
Darwin Suite	21255 AUD pp

23-Dec-2025 to 02-Jan-2026

Explorer cabin	16979 AUD pp
Darwin Suite	23465 AUD pp

06-Jan-2026 to 16-Jan-2026

Explorer cabin	15445 AUD pp
Darwin Suite	21255 AUD pp

Wild Earth Travel

Small Ships, Big Adventures

0800 945 3327 (within New Zealand) | +64 (0) 3 365 1355 | **1800 107 715** (within Australia)

info@wildearth-travel.com | wildearth-travel.com



Wild Earth Travel

Small Ships, Big Adventures

wildearth-travel.com

info@wildearth-travel.com

20-Jan-2026 to 30-Jan-2026

Explorer cabin	15445 AUD pp
----------------	--------------

Darwin Suite	21255 AUD pp
--------------	--------------

03-Feb-2026 to 13-Feb-2026

Explorer cabin	15445 AUD pp
----------------	--------------

Darwin Suite	21255 AUD pp
--------------	--------------

17-Feb-2026 to 27-Feb-2026

Explorer cabin	15445 AUD pp
----------------	--------------

Darwin Suite	21255 AUD pp
--------------	--------------

Wild Earth Travel

Small Ships, Big Adventures

0800 945 3327 (within New Zealand) | +64 (0) 3 365 1355 | **1800 107 715** (within Australia)

info@wildearth-travel.com | **wildearth-travel.com**

Wild Earth Travel

Small Ships, Big Adventures

wildearth-travel.com

info@wildearth-travel.com

PRICING

03-Mar-2026 to 13-Mar-2026

Explorer cabin	15445 AUD pp
Darwin Suite	21255 AUD pp

31-Mar-2026 to 10-Apr-2026

Explorer cabin	17666 AUD pp
Darwin Suite	0 pp

14-Apr-2026 to 24-Apr-2026

Explorer cabin	17666 AUD pp
----------------	--------------

28-Apr-2026 to 08-May-2026

Explorer cabin	17666 AUD pp
----------------	--------------

26-May-2026 to 05-Jun-2026

Explorer cabin	17666 AUD pp
----------------	--------------

09-Jun-2026 to 19-Jun-2026

Explorer cabin	17666 AUD pp
----------------	--------------

23-Jun-2026 to 03-Jul-2026

Explorer cabin	17666 AUD pp
----------------	--------------

07-Jul-2026 to 17-Jul-2026

Explorer cabin	17666 AUD pp
----------------	--------------

21-Jul-2026 to 31-Jul-2026

Explorer cabin	17666 AUD pp
----------------	--------------

04-Aug-2026 to 14-Aug-2026

Explorer cabin	17666 AUD pp
----------------	--------------

18-Aug-2026 to 28-Aug-2026

Explorer cabin	17666 AUD pp
----------------	--------------

01-Sep-2026 to 11-Sep-2026

Explorer cabin	17666 AUD pp
----------------	--------------

15-Sep-2026 to 25-Sep-2026

Explorer cabin	17666 AUD pp
----------------	--------------

29-Sep-2026 to 09-Oct-2026

Explorer cabin	17666 AUD pp
----------------	--------------

13-Oct-2026 to 23-Oct-2026

Explorer cabin	17666 AUD pp
----------------	--------------

27-Oct-2026 to 06-Nov-2026

Explorer cabin	17666 AUD pp
----------------	--------------

10-Nov-2026 to 20-Nov-2026

Explorer cabin	17666 AUD pp
----------------	--------------

24-Nov-2026 to 04-Dec-2026

Explorer cabin	17666 AUD pp
----------------	--------------

08-Dec-2026 to 18-Dec-2026

Explorer cabin	17666 AUD pp
----------------	--------------

22-Dec-2026 to 01-Jan-2027

Explorer cabin	19154 AUD pp
----------------	--------------