

# Wild Earth Travel

*Small Ships, Big Adventures*

**wildearth-travel.com**

**info@wildearth-travel.com**

## 

### South America land adventure

The first part of our adventure takes place on land. Setting off from Lima, Peru's vibrant capital, we'll fly to Cusco, the ancient center of the Inca empire, and discover its many cultural and architectural wonders. Next, we travel up the Sacred Valley on a luxury train to the incredible mountain citadel of Machu Picchu before heading back to Cusco and then flying to charming Quito - the 'City of Eternal Spring'.

### Awe-inspiring Galapagos Islands

After exploring Quito's historic center and visiting the Equator, we'll head to the Galapagos Islands for an unforgettable sea adventure. We'll be on the lookout for iconic animals such as giant tortoises, marine iguanas and Blue-footed Boobies. On this active cruise, and with an onboard Expedition Team of local guides, you'll get closer to the many natural wonders in our small panga boats, kayaks and glass-bottom boat.



### ITINERARY

#### DAY 1 Your land adventure begins

Start your adventure in ancient and modern Lima

Welcome to Peru, one of the most fascinating countries in South America!

If you have time after your arrival in Lima before settling in at your hotel for an overnight stay, we suggest you wander historical centre, which is packed with elegant Spanish colonial architecture, is a UNESCO World Heritage Site.

Wild Earth Travel

*Small Ships, Big Adventures*

**0800 945 3327** (within New Zealand) | +64 (0) 3 365 1355 | **1800 107 715** (within Australia)

info@wildearth-travel.com | **wildearth-travel.com**



# Wild Earth Travel

*Small Ships, Big Adventures*

**wildearth-travel.com**

**info@wildearth-travel.com**

Or why not walk along the oceanfront boardwalk in the upmarket Miraflores district. Here, you'll find many restaurants and cafes, as well as shops if you need to purchase anything ahead of your adventure. Lima is considered the food capital of Latin America, so be sure to try local dishes like ceviche, which is raw fish marinated in lime juice with onion and chilli.

## DAY 2 City of the Incas and a cultural gem

Explore the ancient seat of the Inca Empire

In the morning, you'll take a flight to Cusco, the ancient seat of the Inca Empire. A local guide will take you to check in at your hotel, before inviting you on a guided tour of this enigmatic city.

You'll see impressive Inca structures contrasted with ornate buildings from Spanish colonial times. Visit the 15th century ceremonial compound of Sacsayhuaman, or admire the architecture of the Spanish Santo Domingo church, a convent built on the ruins of Koricancha, the Inca Sun Temple. After your tour of the highlights of this cultural and architectural gem, we'll return to the hotel for dinner.

## DAY 3 Back in time to a lost world

Discover the lost city of the Incas

An early morning transfer will take you to Ollantaytambo, in the Sacred Valley, from where you'll catch a train along the narrow-gauge line to Machu Picchu, passing through stunning highland scenery along the way.

After around two hours, we'll stop at the small town of Aguas Calientes and take the short bus ride to Machu Picchu - the so-called Lost City of the Incas.

You'll enjoy a guided tour of this once-hidden settlement, marvelling at the stonewalls, terraces and ramps that are carved into the mountain. You'll love the peaceful atmosphere of Machu Picchu as you gaze at the lowland jungle from this city in the clouds.

After lunch, we'll return to Cusco where you'll enjoy your final night at the hotel.

## DAY 4 Quito - city of eternal spring

Discover the vibrant city of Quito

Today you'll enjoy a guided tour of Quito's remarkable Old Town - one of the largest and best-preserved colonial-era quarters in South America. Wander through cobblestone streets as you admire the architecture - and sample some delicious chocolate made from the finest Ecuadorian cacao along the way.

Next, you'll head to the iconic 'Middle of the World City', located around 16 miles north of Quito. After lunch, you'll visit the famous monument that delineates the imaginary line of the Equator. Have your camera ready to capture the moment you stand with one foot in each hemisphere.

## DAY 5 Visit historic Quito

Straddle the Equator at the Middle of the World City

Today you'll enjoy a guided tour of Quito's remarkable Old Town - one of the largest and best-preserved colonial-era quarters in South America. Wander through cobblestone streets as you admire the architecture - and sample some delicious chocolate made from finest Ecuadorian cacao along the way.

Next, you'll head to the iconic 'Middle of the World City', located around 16 miles north of Quito. After lunch, you'll visit the famous monument that delineates the imaginary line of the Equator. Have your camera ready to capture the moment you stand with one foot in each hemisphere.

## DAY 6 Your cruise begins

Get ready to explore the spectacular Galapagos Islands

After breakfast, a short flight will take you to Baltra Island in the spectacular Galapagos archipelago. A transfer brings you straight to the port where your comfortable expedition ship MS Santa Cruz II awaits.





# Wild Earth Travel

*Small Ships, Big Adventures*

**wildearth-travel.com**

**info@wildearth-travel.com**

You'll get your first glimpse of the islands' incredible wildlife on Mosquera Islet, home to one of the largest sea lion colonies in the archipelago. We'll take our small panga boats ashore to get a closer look.

As you stroll across flat and sandy dunes, look out for Blue-footed Boobies and Sally Lightfoot crabs, and learn about the marine and terrestrial ecosystems from your naturalist guides.

## DAY 7 San Cristóbal's tortoises

Meet the famous giant tortoises

Your first stop today is the Cerro Colorado Tortoise Reserve - a breeding centre for the endangered giant tortoise. It's also home to other endemic species, including the San Cristobal Mockingbird and lava lizard.

The giant tortoise is probably the most iconic of all Galapagos wildlife, with a lifespan of over 100 years. Here, they thrive, ambling around forests similar to their natural habitat.

Up to August 2024 we'll call at Cerro Brujo, on the island's west coast. With its white coral beaches, you'll literally be walking in Darwin's footsteps as the naturalist visited here in 1835. There are plenty of sea and shore birds to look out for here, as well as sea lions. After August 2024\* we'll instead likely explore Punta Pitt in our small panga boats. This is the only site in the Galapagos Islands where you might see three species of boobies. Enjoy a nature walk, explore the coastline by boat, or snorkel and swim in the crystal-clear water. \*Note - this is dependent on local authority restrictions.

## DAY 8 Santa Fe and South Plaza

Spot wildlife against idyllic backdrops

We start the day with a scenic nature walk on the blissful beaches of Santa Fe, home to the endemic Barrington land iguana and a colony of sea lions.

You can swim or snorkel from our small panga boats, take a kayak for a paddle around the island, or join a trip in our glass-bottomed boat to observe the marine life below. After a delicious lunch, prepared by our onboard chefs,

we head to South Plaza Island.

Keep an eye out for frigatebirds, Swallow-tailed Gulls and Galapagos Shearwaters gliding on the breeze. Here, among a dazzling array of flora, land iguanas laze by the shore while marine iguanas slip in and out of the water.

## DAY 9 Explore Santa Cruz

Learn about local conservation on Santa Cruz Island

Today we pay a visit to the Charles Darwin Research Station in Puerto Ayora

A giant tortoise breeding centre, here you can see recently hatched tortoises and Darwin's famous finches - the birds he used as a basis for his theory of evolution by natural selection. There's also an impressive forest of prickly pear cacti that's home to many land birds.

Enjoy a cooler climate over lunch in the lush highlands, where giant tortoises shuffle about munching on grass and wallowing in pools.

You'll have time for another activity, such as mountain biking or visiting sugar plantation.

## DAY 10 Dramatic Española

Lava lizards and incredible birdlife

Your Galapagos Islands cruise reaches Española, the archipelago's most southerly island. Birdlife here is truly extraordinary - look out for Nazca Boobies, Blue-footed Boobies and Swallow-tailed Gulls, and the mighty Waved Albatross on cruises April through December.

It's also a chance to spot red Española lava lizards and marine iguanas, as well as see the famous blowhole, El Soplador, blasting water 75 feet into the air.

After lunch on board the ship, we'll head to the picturesque coral beach of Gardner Bay and nearby Osborn Islet, to seek out sea lions, mockingbirds and finches. If you're feeling active, you can go snorkelling or kayaking.

Wild Earth Travel

*Small Ships, Big Adventures*

**0800 945 3327** (within New Zealand) | +64 (0) 3 365 1355 | **1800 107 715** (within Australia)

info@wildearth-travel.com | **wildearth-travel.com**



# Wild Earth Travel

*Small Ships, Big Adventures*

**wildearth-travel.com**

**info@wildearth-travel.com**

## DAY 11 Reef life on Eden Islet

Green turtles, sharks and rare bird colonies

The wealth of wildlife watching opportunities continues at Eden Islet, where we hope to see Galapagos green turtles, rays and friendly reef sharks. On the shore, look out for distinctive frigatebirds with their rubbery, red throats.

You can swim or snorkel to explore the reefs. Alternatively, see the reefs from our glass-bottomed boat or by kayak. After lunch, we'll sail to North Seymour.

The island is a great site for spotting colonies of Blue-footed Boobies and Swallow-tailed Gulls. Sea lions and marine iguanas also congregate here, attracted by the bountiful sea life in its waters.

## DAY 12 End of your expedition

From the Galapagos Islands back to Quito

Your expedition cruise draws to a close as you disembark at Baltra Island. A transfer will take you to the airport in Baltra for your flight to Quito to connect to your international flight, or if you prefer, continue to Guayaquil for another adventure.

To explore more of Ecuador, why not extend your stay and join one of our optional Post-Programmes.

As you leave this fascinating region, you'll take with you incredible memories of amazing wildlife and wonderful experiences few have the privilege of seeing.

### Please Note:

Itineraries are subject to change.



Wild Earth Travel  
*Small Ships, Big Adventures*

**0800 945 3327** (within New Zealand) | +64 (0) 3 365 1355 | **1800 107 715** (within Australia)

info@wildearth-travel.com | **wildearth-travel.com**



# Wild Earth Travel

*Small Ships, Big Adventures*

**wildearth-travel.com**

**info@wildearth-travel.com**

## YOUR SHIP: SANTA CRUZ II

<b>YOUR SHIP:</b>	<b>Santa Cruz II</b>
<b>VESSEL TYPE:</b>	<b>Expedition Vessel</b>
<b>LENGTH:</b>	<b>71.8 meters</b>
<b>PASSENGER CAPACITY:</b>	<b>90</b>
<b>BUILT/REFURBISHED:</b>	<b>2002 / 2015 / 2018 / 2021</b>

When you are exploring the Galapagos islands with us onboard the MS Santa Cruz II, you will enjoy a relaxed atmosphere in high quality surroundings. The small size - with a guest capacity of maximum of 90 allows for a cozy yet classy environment. You'll easily feel at home on board.

### Gastronomic delights

Mouthwatering meals and creative cocktails await you aboard MS Santa Cruz II. With creativity and dedication, our cheerful staff draw inspiration from everything from the weather to the region's flavours and local ingredients.

### Beagle Restaurant - Incredible Dining Experience

The MS Santa Cruz II has a team of trained staff members that utilize locally-sourced organic food to prepare every dish. This ship provides a Le Cordon Bleu (a trained Gastronomy Director) and a wide variety of culinary experiences that encompass all diets and preferences. Each and every meal served onboard is exquisite.

### Panorama bar & lounge

This large and well-lit area is not only the main bar, but also the place where most ship events will take place (welcome and farewell cocktail), and doubles as an ideal place for lectures. It's

the ideal site to chill and relax with Wi-Fi hot spot and direct access to our al fresco terrace.

### Luxury living

Your ship gives you everything you could wish for in a home away from home: places for stimulation, relaxation, and meetings with your fellow guests. With a Scandinavian-inspired decor and all modern conveniences, MS Santa Cruz II does it in comfort and style.

### Expedition lounge & bar with Science Corner and library

Facing the front of the ship, the Expedition Lounge - complete with a refreshment station and library - is a fantastic place to admire the beauty of the Galapagos' Islands from inside. The Science Corner includes a glass cabinet, a microscope and a whale vertebrae clone, a perfect learning zone about our science activities.

### Sky deck

The Sky deck offers spaces where guests can relax and enjoy their Galapagos expeditions basking in the sun at the very top of the ship. The sun deck and fitness room are located here.

### Wellness and workouts

Whenever you feel the need to get your body moving, exercise facilities are on hand to get your pulse up. And whether you're relaxing after a day of fascinating lectures, or a long hike, there'll be plenty of opportunities to relax your body and mind.

### Fitness Room

Our fitness center is equipped with yoga mats, set of weights, 2 treadmills, 2 stationary bikes, and an elliptical trainer for those guests who do not want to let their routine slide.

### Hot Tub



Wild Earth Travel  
*Small Ships, Big Adventures*

**0800 945 3327** (within New Zealand) | +64 (0) 3 365 1355 | **1800 107 715** (within Australia)

info@wildearth-travel.com | **wildearth-travel.com**





# Wild Earth Travel

*Small Ships, Big Adventures*



**wildearth-travel.com**

**info@wildearth-travel.com**

For a nice relaxing time our two hot tubs with capacity for 5 guests each. Located on the Expedition deck are ideal.



are ideal.



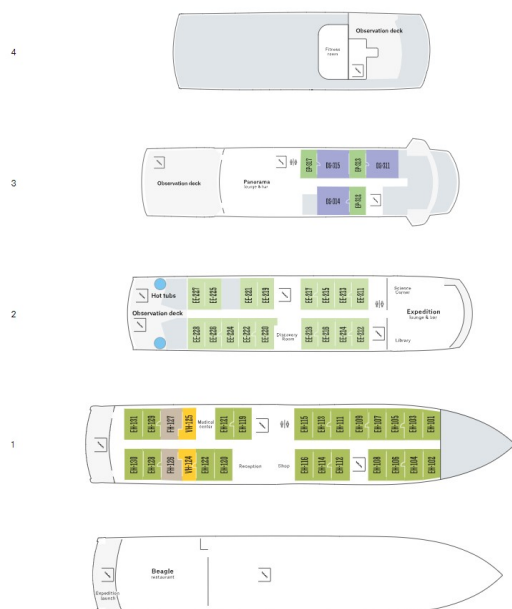
Wild Earth Travel

*Small Ships, Big Adventures*

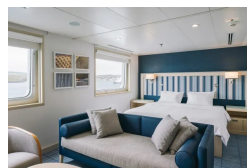
**0800 945 3327** (within New Zealand) | +64 (0) 3 365 1355 | **1800 107 715** (within Australia)

info@wildearth-travel.com | **wildearth-travel.com**

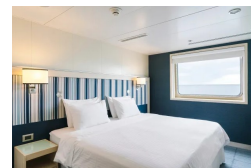
## INSIDE YOUR SHIP



Darwin Suite



Explorer cabin



# Wild Earth Travel

*Small Ships, Big Adventures*

**wildearth-travel.com**

**info@wildearth-travel.com**

## PRICING

### 29-Jun-2025 to 10-Jul-2025

Explorer cabin	16710 AUD pp
Darwin Suite	21394 AUD pp

### 13-Jul-2025 to 24-Jul-2025

Explorer cabin	16710 AUD pp
Darwin Suite	21394 AUD pp

### 27-Jul-2025 to 07-Aug-2025

Explorer cabin	17238 AUD pp
Darwin Suite	21922 AUD pp

### 10-Aug-2025 to 21-Aug-2025

Explorer cabin	16710 AUD pp
Darwin Suite	21394 AUD pp

### 24-Aug-2025 to 04-Sep-2025

Explorer cabin	16710 AUD pp
Darwin Suite	21394 AUD pp

### 07-Sep-2025 to 18-Sep-2025

Explorer cabin	16369 AUD pp
Darwin Suite	20903 AUD pp

### 21-Sep-2025 to 02-Oct-2025

Explorer cabin	16369 AUD pp
Darwin Suite	20903 AUD pp

### 05-Oct-2025 to 16-Oct-2025

Explorer cabin	16369 AUD pp
Darwin Suite	20903 AUD pp

### 19-Oct-2025 to 30-Oct-2025

Explorer cabin	16369 AUD pp
Darwin Suite	20903 AUD pp

### 02-Nov-2025 to 13-Nov-2025

Explorer cabin	16369 AUD pp
Darwin Suite	20903 AUD pp

### 16-Nov-2025 to 27-Nov-2025

Explorer cabin	16369 AUD pp
Darwin Suite	20903 AUD pp

### 30-Nov-2025 to 11-Dec-2025

Explorer cabin	16369 AUD pp
Darwin Suite	20903 AUD pp

### 14-Dec-2025 to 25-Dec-2025

Explorer cabin	17562 AUD pp
Darwin Suite	22622 AUD pp

### 28-Dec-2025 to 08-Jan-2026

Explorer cabin	16369 AUD pp
Darwin Suite	20903 AUD pp

### 11-Jan-2026 to 22-Jan-2026

Explorer cabin	16369 AUD pp
Darwin Suite	20903 AUD pp

Wild Earth Travel

*Small Ships, Big Adventures*

**0800 945 3327** (within New Zealand) | +64 (0) 3 365 1355 | **1800 107 715** (within Australia)

info@wildearth-travel.com | wildearth-travel.com





# Wild Earth Travel

*Small Ships, Big Adventures*

**wildearth-travel.com**

**info@wildearth-travel.com**

**25-Jan-2026 to 05-Feb-2026**

Explorer cabin	16369 AUD pp
----------------	--------------

Darwin Suite	20903 AUD pp
--------------	--------------

**08-Feb-2026 to 19-Feb-2026**

Explorer cabin	16369 AUD pp
----------------	--------------

Darwin Suite	20903 AUD pp
--------------	--------------

**22-Feb-2026 to 05-Mar-2026**

Explorer cabin	16369 AUD pp
----------------	--------------

Darwin Suite	20903 AUD pp
--------------	--------------

**Wild Earth Travel**

*Small Ships, Big Adventures*

**0800 945 3327** (within New Zealand) | +64 (0) 3 365 1355 | **1800 107 715** (within Australia)

info@wildearth-travel.com | **wildearth-travel.com**

# Wild Earth Travel

*Small Ships, Big Adventures*

**wildearth-travel.com**

**info@wildearth-travel.com**

## PRICING

### 08-Mar-2026 to 19-Mar-2026

Explorer cabin	16369 AUD pp
Darwin Suite	20903 AUD pp

### 22-Mar-2026 to 02-Apr-2026

Explorer cabin	16369 AUD pp
Darwin Suite	20903 AUD pp

### 03-Apr-2026 to 14-Apr-2026

Explorer cabin	20455 AUD pp
Darwin Suite	25577 AUD pp

### 17-Apr-2026 to 28-Apr-2026

Explorer cabin	20455 AUD pp
Darwin Suite	25577 AUD pp

### 01-May-2026 to 12-May-2026

Explorer cabin	20455 AUD pp
Darwin Suite	25577 AUD pp

### 15-May-2026 to 26-May-2026

Explorer cabin	20455 AUD pp
Darwin Suite	25577 AUD pp

### 29-May-2026 to 09-Jun-2026

Explorer cabin	20455 AUD pp
Darwin Suite	25577 AUD pp

### 12-Jun-2026 to 23-Jun-2026

Explorer cabin	20455 AUD pp
Darwin Suite	25577 AUD pp

### 26-Jun-2026 to 07-Jul-2026

Explorer cabin	20455 AUD pp
Darwin Suite	25577 AUD pp

### 10-Jul-2026 to 21-Jul-2026

Explorer cabin	20455 AUD pp
Darwin Suite	25577 AUD pp

### 24-Jul-2026 to 04-Aug-2026

Explorer cabin	20455 AUD pp
Darwin Suite	25577 AUD pp

### 07-Aug-2026 to 18-Aug-2026

Explorer cabin	20455 AUD pp
Darwin Suite	25577 AUD pp

### 21-Aug-2026 to 01-Sep-2026

Explorer cabin	20455 AUD pp
Darwin Suite	25577 AUD pp

### 04-Sep-2026 to 15-Sep-2026

Explorer cabin	20455 AUD pp
Darwin Suite	25577 AUD pp

### 18-Sep-2026 to 29-Sep-2026

Explorer cabin	20455 AUD pp
Darwin Suite	25577 AUD pp

Wild Earth Travel

*Small Ships, Big Adventures*

**0800 945 3327** (within New Zealand) | +64 (0) 3 365 1355 | **1800 107 715** (within Australia)

info@wildearth-travel.com | wildearth-travel.com



# Wild Earth Travel

*Small Ships, Big Adventures*

**wildearth-travel.com**

**info@wildearth-travel.com**

**02-Oct-2026 to 13-Oct-2026**

Explorer cabin	20455 AUD pp
Darwin Suite	25577 AUD pp

**16-Oct-2026 to 27-Oct-2026**

Explorer cabin	20455 AUD pp
Darwin Suite	25577 AUD pp

**30-Oct-2026 to 10-Nov-2026**

Explorer cabin	20455 AUD pp
Darwin Suite	25577 AUD pp



Wild Earth Travel  
*Small Ships, Big Adventures*

**0800 945 3327** (within New Zealand) | +64 (0) 3 365 1355 | **1800 107 715** (within Australia)

info@wildearth-travel.com | **wildearth-travel.com**





# Wild Earth Travel

*Small Ships, Big Adventures*

**wildearth-travel.com**

**info@wildearth-travel.com**

## PRICING

**13-Nov-2026 to 24-Nov-2026**

Explorer cabin	20455 AUD pp
----------------	--------------

Darwin Suite	25577 AUD pp
--------------	--------------

**27-Nov-2026 to 08-Dec-2026**

Explorer cabin	20455 AUD pp
----------------	--------------

Darwin Suite	25577 AUD pp
--------------	--------------

**11-Dec-2026 to 22-Dec-2026**

Explorer cabin	21612 AUD pp
----------------	--------------

Darwin Suite	27243 AUD pp
--------------	--------------

**Wild Earth Travel**

*Small Ships, Big Adventures*

**0800 945 3327** (within New Zealand) | +64 (0) 3 365 1355 | **1800 107 715** (within Australia)

info@wildearth-travel.com | **wildearth-travel.com**