

Wild Earth Travel

Small Ships, Big Adventures

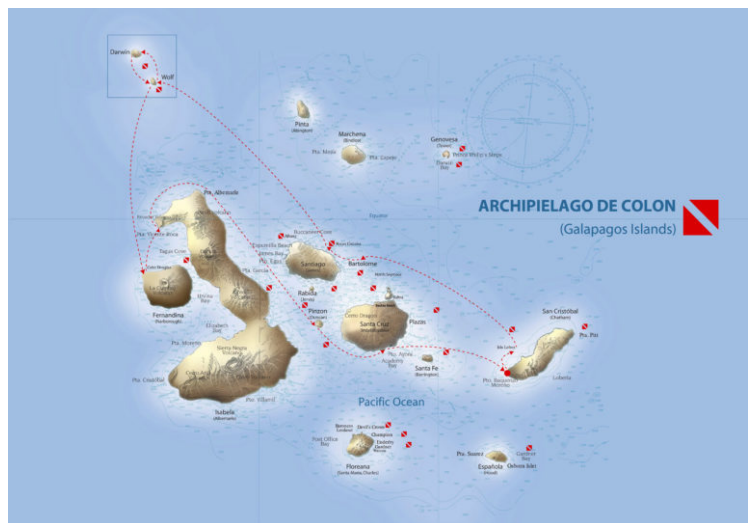
wildearth-travel.com

info@wildearth-travel.com

GALAPAGOS DIVE CRUISE - ENJOY THE BEST DIVING IN THE WORLD

Galapagos Sky is a dedicated scuba liveaboard offering trips on 7-night itineraries year round. We do spend 3 dive days at the remote northern islands of Wolf and Darwin which have now been scientifically recognized as having the highest abundance of sharks in the world! We also dive with endemic Marine Iguanas at Cabo Douglas and Mola Mola at Punta Vicente Roca. Our itinerary truly gives you the best scuba experience in the Galapagos!

We do up to 4 dives a day with 1 night dive on the itinerary.



ITINERARY

Day 1: Sunday (Embarkation day Isla Lobos - Check out dive)

When you arrive at the airport at San Cristobal on Sunday (Avianca flight 1636), the crew of the Galapagos Sky will personally meet you, collect your luggage, and escort you to the Galapagos Sky. Your luggage will be delivered to the dive deck for you. After everyone is on board, we will introduce you to the boat and do our mandatory safety briefings and drill. Then, we cruise to the area of Los Lobos for your check-out dive. This will be your first underwater introduction to Galapagos sea lions and fur seals! Watch them Zoom in and out and dance playfully for you! Even on the first day of your live-aboard cruise - you begin to see the myriad and diverse land formations which comprise the Galapagos Islands topside. It is then you realize you will see nothing like it in your lifetime.

Day 2: Monday (Bartolome - 1 dive and land walk, Cousins 2 dives)

Wild Earth Travel

Small Ships, Big Adventures

0800 945 3327 (within New Zealand) | +64 (0) 3 365 1355 | **1800 107 715** (within Australia)

info@wildearth-travel.com | **wildearth-travel.com**



Wild Earth Travel

Small Ships, Big Adventures

wildearth-travel.com

info@wildearth-travel.com

Bartolome - Penguins can be seen at this dive site. Bartolome is a lovely area where guests enjoy a favorite land tour where they can climb to the top of the hill to where breathe taking views abound. Cousins Rocks- this dive is an itinerary favorite and is done along a beautiful wall and allows for great viewing opportunities for corals, frog fish, sea horses, scorpion fish and octopus. It is also a great dive for large schools of Barracuda and also Hammerhead shark sightings. Sea lions will be your companions upon entry and on the safety stops. By definition, the entire Galapagos Archipelago is geographically remote. But after this day of your live-aboard cruise finds you heading toward the most isolated, northernmost part of the Galapagos Islands - the uninhabited, untouched, twin cathedrals of world class diving - Wolf and Darwin Islands.

Days 3-5: Tuesday-Thursday (Wolf & Darwin. Tues - 4 Dives + a night dive, Wed - 4 dives, Thurs - 3 Dives)

You'll spend the next three days diving (up to four dives per day plus a night dive) the legendary islands of WOLF & DARWIN. Most experienced divers will agree, Wolf and Darwin can provide some of the best diving encounters in the world! Whale sharks are common here from Mid May through November. At The Arch at Darwin, you will see hammerhead sharks either individually, in small groups, or large schools. Bottlenose dolphins are common. The reef contains many warm water varieties of fish found nowhere else in the Islands. Once you see Wolf and Darwin - you'll immediately understand why there are no shore excursions on this part of the cruise - there is no way up the vertical cliffs! Darwin Island: Considered by many experienced divers as the very best dive site in the world, The Arch at Darwin island (actually several dive sites depending on where you enter, currents, etc) honors its reputation. It is warmer by a few degrees than the central islands. In one single dive you can find schooling hammerhead sharks, Galapagos sharks, large pods of dolphins, thick schools of skipjack and yellow fin tuna, big eye jacks, mobula rays, and silky sharks. From June to November, it is not uncommon to encounter whale sharks in multiple numbers on one single dive. The presence of occasional tiger sharks, black and blue marlin, and killer whales adds on to this amazing diving experience. If you still have time to look for smaller stuff, you'll find octopus, flounders, and an enormous variety and abundance of tropical fish. Darwin Island is the biggest jewel on the Galapagos Crown. Wolf Island: One of those magical islands, with several dive sites to choose from. If you want to see sharks, you are at the right spot. This is a place for schooling hammerhead sharks, large aggregations of Galapagos sharks, and occasionally whale sharks. Seeing dolphins, large schools of tuna, spotted eagle rays, barracudas,

sea lions and sea turtles is common. The bottom is littered with hundreds of moray eels, many of them free swimming. Being several degrees warmer than the central islands, you can look for many representatives of the Indo-Pacific underwater fauna. On a night dive here you will also enjoy spotting and watching the Red Lipped bat fish walk along the bottom of the sea!

Day 6: Friday (Cabo Douglas 1 dive & Punta Vicente Roca up to 2 dives and Panga ride if time allows)

Cabo Douglas: On the western side of Fernandina Island, we will do 1 dive Friday morning. Here you can expect to see Galapagos Penguins, Marine Iguanas, Flightless Cormorants, Sea Lions, Seahorse, Sea Turtles, Horn Sharks, Red Lipped Batfish, and occasional hammerhead sharks and white tip sharks. Also keep an eye out for chevron barracuda, snappers, yellow fin tuna, rainbow runners, and wahoo. There are also a lot of smaller fishes like creole fishes, parrot fishes, scrawled filefishes, pacific box fishes, and tiger snake eels. Punta Vincente Roca: Our coldest yet rapidly increasing favorite dive - steep, deep vertical wall covered in soft coral, sponges, and endemic black coral. Regular sightings of mola mola (oceanic sun fish,) sea horses, bullhead sharks, red lipped bat fish, various shrimp and many other marine invertebrates. Keep your eyes open for fly bys from the flightless cormorants, penguins and maybe even a marine iguana. Our after-dive panga ride offers great topside photo ops for penguins, flightless cormorants, marine iguanas, sea lions, blue footed & nazca booby Birds, magnificent frigates and noddy terns. The diving here is chilly (particularly below the thermocline - but not to be missed!).

Day 7: Saturday (Northeast tip of Isla Pinzon/Isote Dumb- 1 dive, Puerto Ayora/Highlands tour)

Isla Pinzon - While diving Isla Pinzon you will be provided opportunities for encounters with a variety of species of sharks, sea lions, mantas, eagle rays, and moray eels. Many Species of fish and tropicals including yellow tailed surgeonfish, king angelfish, Moorish idols, steel pompanos, snappers, grunts, creole fish, and barracuda. This dive is then followed by a transit to Itabaca Channel where guests will be transferred by bus (at approx. 1400h and approx.. 45 minute ground transfer) to visit the Highlands of Santa Cruz to see the Galapagos Tortoises in their natural environment; and visit to Puerto Ayora. Guests will then be transferred back to Itabaca Channel to board the Galapagos Sky approx. 1900h for dinner on board. The Sky will then return to San Cristobal for Sunday morning cruise completion.

Wild Earth Travel

Small Ships, Big Adventures

0800 945 3327 (within New Zealand) | +64 (0) 3 365 1355 | **1800 107 715** (within Australia)

info@wildearth-travel.com | wildearth-travel.com



Wild Earth Travel

Small Ships, Big Adventures

wildearth-travel.com

info@wildearth-travel.com

Day 8 Sunday (Land Tour and Day of Departure, Interpretation center)

Arrive San Cristobal--(Land Excursion) visit the Interpretation Center where an interesting human history of Galapagos is presented, town walk (last chance for shopping). Late morning departure.

Please Note:

As on any live-aboard or diving adventure - Itineraries may be changed due to current or pending weather conditions or at the Captain's discretion for your safety. Itineraries can also be changed at the discretion of the Galapagos National Park who administer cruise itineraries.

Wild Earth Travel

Small Ships, Big Adventures

0800 945 3327 (within New Zealand) | +64 (0) 3 365 1355 | **1800 107 715** (within Australia)

info@wildearth-travel.com | **wildearth-travel.com**

Wild Earth Travel

Small Ships, Big Adventures

wildearth-travel.com

info@wildearth-travel.com

YOUR SHIP: GALAPAGOS SKY

YOUR SHIP:	Galapagos Sky
VESSEL TYPE:	Yacht
LENGTH:	33 metres
PASSENGER CAPACITY:	16 (in twin Cabins)
BUILT/REFURBISHED:	2000/2001

The luxury live-aboard M/V Galapagos Sky is a 100 ft. (33m) state-of-the-art live-aboard diving yacht exploring the fabled waters of the Galapagos Islands.

Designed by Peter A. Hughes and current owner Santiago Dunn in the year 2000, and launched in 2001 - this luxury live-aboard hosts 16 passengers in 8 well appointed cabins.

Built to exceed any/all international safety standards, M/V Galapagos Sky is not only your live-aboard dive platform to the undersea wonders of Galapagos - but also has the crew, chefs and amenities for you to enjoy five-star service during your entire trip.

Accommodations include eight private en-suite cabins with two twin or one king size bed options. Each cabin features a private head/shower, mirrored cabinet and wardrobe, bathrobes, hairdryer, and marine safe (biodegradable) toiletries.

The elegant M/V Galapagos Sky is fully air conditioned and features a spacious lounge area and separate fine dining area. Two dive masters and up to four dives a day ensure that your voyage will have ample underwater time to discover the magic of Galapagos diving.



gos diving.

Wild Earth Travel

Small Ships, Big Adventures

0800 945 3327 (within New Zealand) | +64 (0) 3 365 1355 | **1800 107 715** (within Australia)

info@wildearth-travel.com | **wildearth-travel.com**

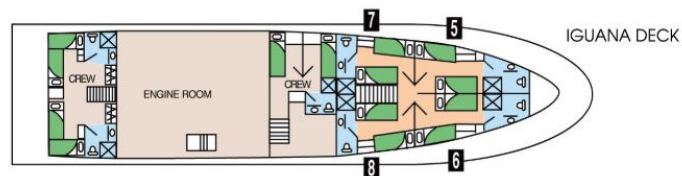
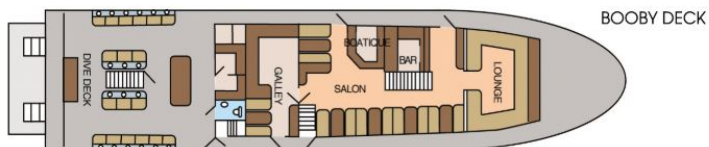
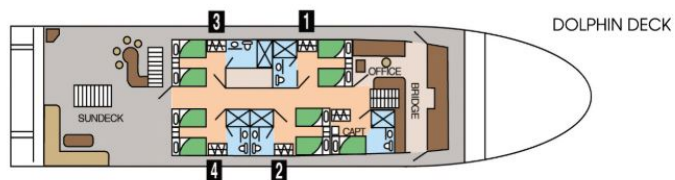
Wild Earth Travel

Small Ships, Big Adventures

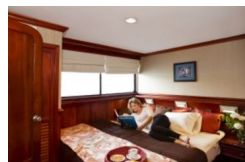
wildearth-travel.com

info@wildearth-travel.com

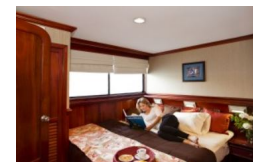
INSIDE YOUR SHIP



Deluxe Cabin



Master Cabin



Wild Earth Travel

Small Ships, Big Adventures

0800 945 3327 (within New Zealand) | +64 (0) 3 365 1355 | 1800 107 715 (within Australia)

info@wildearth-travel.com | wildearth-travel.com

Wild Earth Travel

Small Ships, Big Adventures

wildearth-travel.com

info@wildearth-travel.com

PRICING

15-Jun-2025 to 22-Jun-2025

Deluxe Cabin	7395 USD pp
Master Cabin	7695 USD pp

22-Jun-2025 to 29-Jun-2025

Deluxe Cabin	7395 USD pp
Master Cabin	7695 USD pp

29-Jun-2025 to 06-Jul-2025

Deluxe Cabin	7395 USD pp
Master Cabin	7695 USD pp

06-Jul-2025 to 13-Jul-2025

Deluxe Cabin	7395 USD pp
Master Cabin	7695 USD pp

13-Jul-2025 to 20-Jul-2025

Deluxe Cabin	7395 USD pp
Master Cabin	7695 USD pp

20-Jul-2025 to 27-Jul-2025

Deluxe Cabin	7395 USD pp
Master Cabin	7695 USD pp

27-Jul-2025 to 03-Aug-2025

Deluxe Cabin	7395 USD pp
Master Cabin	7695 USD pp

03-Aug-2025 to 10-Aug-2025

Deluxe Cabin	7395 USD pp
Master Cabin	7695 USD pp

31-Aug-2025 to 07-Sep-2025

Deluxe Cabin	7395 USD pp
Master Cabin	7695 USD pp

07-Sep-2025 to 14-Sep-2025

Deluxe Cabin	7395 USD pp
Master Cabin	7695 USD pp

14-Sep-2025 to 21-Sep-2025

Deluxe Cabin	7395 USD pp
Master Cabin	7695 USD pp

09-Nov-2025 to 16-Nov-2025

Deluxe Cabin	7395 USD pp
Master Cabin	7695 USD pp

16-Nov-2025 to 23-Nov-2025

Deluxe Cabin	7395 USD pp
Master Cabin	7695 USD pp

23-Nov-2025 to 30-Nov-2025

Deluxe Cabin	7395 USD pp
Master Cabin	7695 USD pp

30-Nov-2025 to 07-Dec-2025

Deluxe Cabin	7395 USD pp
Master Cabin	7695 USD pp



Wild Earth Travel

Small Ships, Big Adventures

wildearth-travel.com

info@wildearth-travel.com

07-Dec-2025 to 14-Dec-2025

Deluxe Cabin	7395 USD pp
---------------------	--------------------

Master Cabin	7695 USD pp
---------------------	--------------------

14-Dec-2025 to 21-Dec-2025

Deluxe Cabin	7395 USD pp
---------------------	--------------------

Master Cabin	7695 USD pp
---------------------	--------------------

21-Dec-2025 to 28-Dec-2025

Deluxe Cabin	7395 USD pp
---------------------	--------------------

Master Cabin	7695 USD pp
---------------------	--------------------

Wild Earth Travel

Small Ships, Big Adventures

0800 945 3327 (within New Zealand) | +64 (0) 3 365 1355 | **1800 107 715** (within Australia)

info@wildearth-travel.com | **wildearth-travel.com**

Wild Earth Travel

Small Ships, Big Adventures

wildearth-travel.com

info@wildearth-travel.com

PRICING

28-Dec-2025 to 04-Jan-2026

Deluxe Cabin	7395 USD pp
Master Cabin	7695 USD pp

04-Jan-2026 to 11-Jan-2026

Deluxe Cabin	7395 USD pp
Master Cabin	7695 USD pp

11-Jan-2026 to 18-Jan-2026

Deluxe Cabin	7395 USD pp
Master Cabin	7695 USD pp

18-Jan-2026 to 25-Jan-2026

Deluxe Cabin	7395 USD pp
Master Cabin	7695 USD pp

01-Feb-2026 to 08-Feb-2026

Deluxe Cabin	7395 USD pp
Master Cabin	7695 USD pp

08-Feb-2026 to 15-Feb-2026

Deluxe Cabin	7395 USD pp
Master Cabin	7695 USD pp

15-Feb-2026 to 22-Feb-2026

Deluxe Cabin	7395 USD pp
Master Cabin	7695 USD pp

01-Mar-2026 to 08-Mar-2026

Deluxe Cabin	7395 USD pp
Master Cabin	7695 USD pp

08-Mar-2026 to 15-Mar-2026

Deluxe Cabin	7395 USD pp
Master Cabin	7695 USD pp

15-Mar-2026 to 22-Mar-2026

Deluxe Cabin	7395 USD pp
Master Cabin	7695 USD pp

05-Apr-2026 to 12-Apr-2026

Deluxe Cabin	7395 USD pp
Master Cabin	7695 USD pp

12-Apr-2026 to 19-Apr-2026

Deluxe Cabin	7395 USD pp
Master Cabin	7695 USD pp

19-Apr-2026 to 26-Apr-2026

Deluxe Cabin	7395 USD pp
Master Cabin	7695 USD pp

03-May-2026 to 10-May-2026

Deluxe Cabin	7395 USD pp
Master Cabin	7695 USD pp

10-May-2026 to 17-May-2026

Deluxe Cabin	7395 USD pp
Master Cabin	7695 USD pp



Wild Earth Travel

Small Ships, Big Adventures

wildearth-travel.com

info@wildearth-travel.com

17-May-2026 to 24-May-2026

Deluxe Cabin	7395 USD pp
---------------------	--------------------

Master Cabin	7695 USD pp
---------------------	--------------------

14-Jun-2026 to 21-Jun-2026

Deluxe Cabin	7395 USD pp
---------------------	--------------------

Master Cabin	7695 USD pp
---------------------	--------------------

21-Jun-2026 to 28-Jun-2026

Deluxe Cabin	7395 USD pp
---------------------	--------------------

Master Cabin	7695 USD pp
---------------------	--------------------

Wild Earth Travel

Small Ships, Big Adventures

0800 945 3327 (within New Zealand) | +64 (0) 3 365 1355 | **1800 107 715** (within Australia)

info@wildearth-travel.com | **wildearth-travel.com**

Wild Earth Travel

Small Ships, Big Adventures

wildearth-travel.com

info@wildearth-travel.com

PRICING

28-Jun-2026 to 05-Jul-2026

Deluxe Cabin	7395 USD pp
Master Cabin	7695 USD pp

05-Jul-2026 to 12-Jul-2026

Deluxe Cabin	7395 USD pp
Master Cabin	7695 USD pp

12-Jul-2026 to 19-Jul-2026

Deluxe Cabin	7395 USD pp
Master Cabin	7695 USD pp

19-Jul-2026 to 26-Jul-2026

Deluxe Cabin	7395 USD pp
Master Cabin	7695 USD pp

02-Aug-2026 to 09-Aug-2026

Deluxe Cabin	7395 USD pp
Master Cabin	7695 USD pp

09-Aug-2026 to 16-Aug-2026

Deluxe Cabin	7395 USD pp
Master Cabin	7695 USD pp

16-Aug-2026 to 23-Aug-2026

Deluxe Cabin	7395 USD pp
Master Cabin	7695 USD pp

13-Sep-2026 to 20-Sep-2026

Deluxe Cabin	7395 USD pp
Master Cabin	7695 USD pp

20-Sep-2026 to 27-Sep-2026

Deluxe Cabin	7395 USD pp
Master Cabin	7695 USD pp

27-Sep-2026 to 04-Oct-2026

Deluxe Cabin	7395 USD pp
Master Cabin	7695 USD pp

04-Oct-2026 to 11-Oct-2026

Deluxe Cabin	7395 USD pp
Master Cabin	7695 USD pp

11-Oct-2026 to 18-Oct-2026

Deluxe Cabin	7395 USD pp
Master Cabin	7695 USD pp

18-Oct-2026 to 25-Oct-2026

Deluxe Cabin	7395 USD pp
Master Cabin	7695 USD pp

01-Nov-2026 to 08-Nov-2026

Deluxe Cabin	7395 USD pp
Master Cabin	7695 USD pp

08-Nov-2026 to 15-Nov-2026

Deluxe Cabin	7395 USD pp
Master Cabin	7695 USD pp



Wild Earth Travel

Small Ships, Big Adventures

wildearth-travel.com

info@wildearth-travel.com

15-Nov-2026 to 22-Nov-2026

Deluxe Cabin	7395 USD pp
---------------------	--------------------

Master Cabin	7695 USD pp
---------------------	--------------------

06-Dec-2026 to 13-Dec-2026

Deluxe Cabin	7395 USD pp
---------------------	--------------------

Master Cabin	7695 USD pp
---------------------	--------------------

13-Dec-2026 to 20-Dec-2026

Deluxe Cabin	7395 USD pp
---------------------	--------------------

Master Cabin	7695 USD pp
---------------------	--------------------

Wild Earth Travel

Small Ships, Big Adventures

0800 945 3327 (within New Zealand) | +64 (0) 3 365 1355 | **1800 107 715** (within Australia)

info@wildearth-travel.com | **wildearth-travel.com**

Wild Earth Travel

Small Ships, Big Adventures

wildearth-travel.com

info@wildearth-travel.com

PRICING

20-Dec-2026 to 27-Dec-2026

Deluxe Cabin	7395 USD pp
Master Cabin	7695 USD pp

07-Feb-2027 to 14-Feb-2027

Deluxe Cabin	7395 USD pp
Master Cabin	7695 USD pp

14-Feb-2027 to 21-Feb-2027

Deluxe Cabin	7395 USD pp
Master Cabin	7695 USD pp

21-Feb-2027 to 28-Feb-2027

Deluxe Cabin	7395 USD pp
Master Cabin	7695 USD pp

14-Mar-2027 to 21-Mar-2027

Deluxe Cabin	7395 USD pp
Master Cabin	7695 USD pp

21-Mar-2027 to 28-Mar-2027

Deluxe Cabin	7395 USD pp
Master Cabin	7695 USD pp

28-Mar-2027 to 04-Apr-2027

Deluxe Cabin	7395 USD pp
Master Cabin	7695 USD pp

04-Apr-2027 to 11-Apr-2027

Deluxe Cabin	7395 USD pp
Master Cabin	7695 USD pp

11-Apr-2027 to 18-Apr-2027

Deluxe Cabin	7395 USD pp
Master Cabin	7695 USD pp

18-Apr-2027 to 25-Apr-2027

Deluxe Cabin	7395 USD pp
Master Cabin	7695 USD pp

02-May-2027 to 09-May-2027

Deluxe Cabin	7395 USD pp
Master Cabin	7695 USD pp

09-May-2027 to 16-May-2027

Deluxe Cabin	7395 USD pp
Master Cabin	7695 USD pp

16-May-2027 to 23-May-2027

Deluxe Cabin	7395 USD pp
Master Cabin	7695 USD pp

06-Jun-2027 to 13-Jun-2027

Deluxe Cabin	7395 USD pp
Master Cabin	7695 USD pp

13-Jun-2027 to 20-Jun-2027

Deluxe Cabin	7395 USD pp
Master Cabin	7695 USD pp



Wild Earth Travel

Small Ships, Big Adventures

wildearth-travel.com

info@wildearth-travel.com

20-Jun-2027 to 27-Jun-2027

Deluxe Cabin	7395 USD pp
---------------------	--------------------

Master Cabin	7695 USD pp
---------------------	--------------------

04-Jul-2027 to 11-Jul-2027

Deluxe Cabin	7395 USD pp
---------------------	--------------------

Master Cabin	7695 USD pp
---------------------	--------------------

11-Jul-2027 to 18-Jul-2027

Deluxe Cabin	7395 USD pp
---------------------	--------------------

Master Cabin	7695 USD pp
---------------------	--------------------

Wild Earth Travel

Small Ships, Big Adventures

0800 945 3327 (within New Zealand) | +64 (0) 3 365 1355 | **1800 107 715** (within Australia)

info@wildearth-travel.com | **wildearth-travel.com**

Wild Earth Travel

Small Ships, Big Adventures

wildearth-travel.com

info@wildearth-travel.com

PRICING

18-Jul-2027 to 25-Jul-2027

Deluxe Cabin	7395 USD pp
Master Cabin	7695 USD pp

01-Aug-2027 to 08-Aug-2027

Deluxe Cabin	7395 USD pp
Master Cabin	7695 USD pp

08-Aug-2027 to 15-Aug-2027

Deluxe Cabin	7395 USD pp
Master Cabin	7695 USD pp

15-Aug-2027 to 22-Aug-2027

Deluxe Cabin	7395 USD pp
Master Cabin	7695 USD pp

05-Sep-2027 to 12-Sep-2027

Deluxe Cabin	7395 USD pp
Master Cabin	7695 USD pp

12-Sep-2027 to 19-Sep-2027

Deluxe Cabin	7395 USD pp
Master Cabin	7695 USD pp

19-Sep-2027 to 26-Sep-2027

Deluxe Cabin	7395 USD pp
Master Cabin	7695 USD pp

03-Oct-2027 to 10-Oct-2027

Deluxe Cabin	7395 USD pp
Master Cabin	7695 USD pp

10-Oct-2027 to 17-Oct-2027

Deluxe Cabin	7395 USD pp
Master Cabin	7695 USD pp

17-Oct-2027 to 24-Oct-2027

Deluxe Cabin	7395 USD pp
Master Cabin	7695 USD pp

08-Nov-2027 to 15-Nov-2027

Deluxe Cabin	7395 USD pp
Master Cabin	7695 USD pp

15-Nov-2027 to 22-Nov-2027

Deluxe Cabin	7395 USD pp
Master Cabin	7695 USD pp

22-Nov-2027 to 29-Nov-2027

Deluxe Cabin	7395 USD pp
Master Cabin	7695 USD pp

06-Dec-2027 to 13-Dec-2027

Deluxe Cabin	7395 USD pp
Master Cabin	7695 USD pp

13-Dec-2027 to 20-Dec-2027

Deluxe Cabin	7395 USD pp
Master Cabin	7695 USD pp



Wild Earth Travel

Small Ships, Big Adventures

wildearth-travel.com

info@wildearth-travel.com

20-Dec-2027 to 27-Dec-2027

Deluxe Cabin	7395 USD pp
Master Cabin	7695 USD pp

ADDITIONAL CHARGES:

Transit Control Card & Galapagos

Park Tax 220 USD pp

Optional extras & upgrades

Full Gear Rental Package 250 USD

BCD, Reg-set, & wetsuit, mask, snorkel, and fins). Excludes computer and gloves.

Flights to Galapagos. Approximately 550 USD



Wild Earth Travel
Small Ships, Big Adventures

0800 945 3327 (within New Zealand) | +64 (0) 3 365 1355 | **1800 107 715** (within Australia)

info@wildearth-travel.com | **wildearth-travel.com**