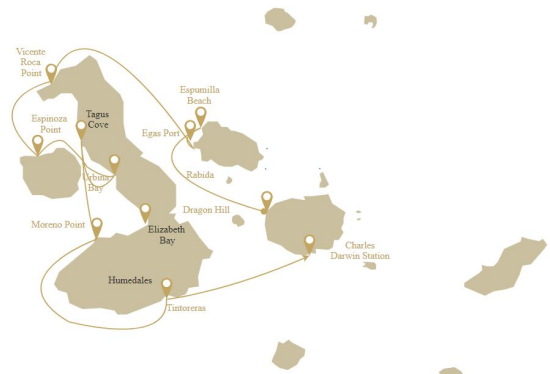




info@wildearth-travel.com



Day 1 SUNDAY: BALTRA AIRPORT – CERRO DRAGON (DRAGON HILL)

Day 2 MONDAY: BUCANERO – PLAYA ESPUMILLA – PUERTO EGAS

Small Ships, Big Adventures

info@wildearth-travel.com | **wildearth-travel.com**



Wild Earth Travel

Small Ships, Big Adventures

wildearth-travel.com

info@wildearth-travel.com

Santo Wood, the beach, and the stunning landscape; the beach is a very important site for tortoises because they use this place for nesting. Once time, the pigs were the main predatory of tortoise's eggs; pigs were eradicated with the creation of Isabela Project. Lunch EGAS PORT: Here we find a beautiful black sand beach; to the south of the beach is the Pan de Azucar Volcano, whose volcanic deposits have contributed to the formation of the black sand beach. The crater of this volcano contains a saltwater lake that dries up during hot weather. Between 1928 and 1930, explorations to develop a salt mine were carried out, but it was decided that a mine was not feasible. The workers' use of endemic woods also damaged the environment and the development was scrapped. Descent to the salt mine is not allowed. Dinner.

Day 3 TUESDAY: ISABELA – FERNANDINA

ISABELA ISLAND: VICENTE ROCA POINT is comprised of two separate coves, this site is a large bay with spectacular sea life. Keep an eye out for seahorses, sea turtles, and the strange yet fascinating Mola-mola (sunfish). Lunch. FERNANDINA ISLAND - ESPINOZA POINT: Fernandina is the third biggest island in the Galapagos and has only one visiting site: Espinoza Point, famous for the large colonies of marine iguanas and the home of the flightless cormorant, the Galapagos penguin, snakes, and more. From Espinoza Point, we can admire the beauty of Fernandina Island and its volcano which last erupted in May of 2005. Fernandina is the only island that doesn't have mammals and the open areas are extremely fragile. From January to June, the nesting period of the marine iguana, we take great care when walking. Dinner.

Day 4 WEDNESDAY: ISABELA

ISABELA ISLAND - URBINA BAY: this place is located at the base of Alcedo Volcano between Elizabeth Bay and Tagus Cove. Wet landing. Trail length is around 3.20 Km; during this walk, we can observe land iguanas, hawks, and tortoises. It is also possible to see red and blue lobsters. Lunch. ISABELA ISLAND - TAGUS COVE: It is located to the west of Darwin Volcano on Isabela Island. While walking, we will find several inscriptions (names of pirates) dating back to the 1800's. From here, we can see Darwin Lake, a salt water lake with a depth of approximately 9 m. It contains no fish. It is very common to see a variety of bird species. Dinner.

Day 5 THURSDAY: ISABELA

ISABELA ISLAND - MORENO POINT. We will disembark at Moreno Point which is located near Elizabeth Bay on the west coast of Isabela Island. The plethora of birds seen during a dinghy ride along the striking rocky shores or a hike along a path through lava rock leading to tide pools and mangroves, create a birdwatcher's delight. In the tide pools, green sea turtles or white-tip sharks can be spotted. Lunch. ISABELA ISLAND - ELIZABETH BAY: After lunch, this is one of the island's breeding sites for penguins. Located on the west coast of Isabela, Elizabeth Point is a marine visitor site. Visit Red Mangrove Cove: Brown pelicans, flightless cormorants, spotted eagle rays, golden rays and sea lions are often seen. Dinner.

DAY 6 FRIDAY AM: CHARLES DARWIN STATION PM: HIGHLANDS

The Charles Darwin Station is a nonprofit organization which has been working for decades together with the Galapagos National Park to preserve the biodiversity of these unique islands. During this visit you will learn about the projects that both institutions carry together to protect the native species and eradicate the invasive ones which are threatening the Galapagos environment. One of the most important and emblematic projects has been reproducing giant tortoises in captivity. The visit is mostly outdoors in a beautiful dry native forest with giant cactus and many other interesting native plants. It is also a fantastic place to find several endemic Darwin finches, as well as flycatchers and mockingbirds. Highlights: Galapagos giant tortoise & land iguanas breeding program, Darwin finches, Galapagos mockingbirds, Galapagos flycatchers, yellow warblers. Either if you do this visit starting from Baltra or from Puerto Ayora, a bus will take you to the highlands stopping along the way at one of the reserves to visit the lush highland forests where you will look for Galapagos Giant tortoises in their natural environment. This is the best place in the Galapagos to see these gentle giants (reaching over 300 kg / 600 pounds!) casually grazing and resting in freshwater ponds. This is also home for a great diversity of birds rarely found at the lowlands, including finches (tree, woodpecker and vegetarian finches), flycatchers and several species of water birds. You will visit a lava tunnel (depending on the itinerary) and learn how these extraordinary formations were created by ancient volcanic eruptions. Highlights: Giant tortoises, Darwin finches, barn owls, white-cheeked pintails, Galapagos flycatchers, Lava tunnels.

Day 7 SATURDAY: AM: TWIN CRATERS

The Twin Craters or also known as "Los Gemelos", are located on the way to the Highlands of Santa Cruz Island. You will find them on both sides of the

Wild Earth Travel

Small Ships, Big Adventures

0800 945 3327 (within New Zealand) | +64 (0) 3 365 1355 | **1800 107 715** (within Australia)

info@wildearth-travel.com | wildearth-travel.com



Wild Earth Travel

Small Ships, Big Adventures



wildearth-travel.com

info@wildearth-travel.com

road leading from Puerto Ayora to Baltra. In fact, they are not real craters, they were created by the collapse of surface material in underground fissures and chambers. You will have a wonderful view of the local flora, like Scalesia plants. On this site it is also possible to observe the endemic short-ear owl. Then, transfer to the airport to take your flight back to continental Ecuador.

Please Note:

This itinerary is subject to change without notice; due to seasonal changes, weather conditions or Galapagos National Park regulations.



Wild Earth Travel

Small Ships, Big Adventures

0800 945 3327 (within New Zealand) | +64 (0) 3 365 1355 | **1800 107 715** (within Australia)

info@wildearth-travel.com | **wildearth-travel.com**

Wild Earth Travel

Small Ships, Big Adventures

wildearth-travel.com

info@wildearth-travel.com

YOUR SHIP: BONITA

YOUR SHIP:	Bonita
VESSEL TYPE:	Small Ship
LENGTH:	25 meters
PASSENGER CAPACITY:	16
BUILT/REFURBISHED:	2019



Welcome area: Totally Furnished

Social area: Artistic decoration inspired on endemic species of Galapagos. Direct access to the bar.

Dining area: Vegan and vegetarian options. Coffee and water station.

Cabins: Fully Equipped, 4 Cabins in the upper deck, 2 Cabin in the main deck, 3 Cabins in the lower deck. All cabins offers private facilities such as: private bathrooms, cold/hot water, air conditioning, towel dryer, safe.

Sundeck: Equipped with 6 chairs to rest and admire amazing landscapes.

Amenities: Shampoo, conditioner, soap.

Exceptional Service: The physical capacity of the cruise is 16 passengers. This means that we have the space to accommodate single passengers and tour leaders, creating a very personalized on board experience.

Wild Earth Travel

Small Ships, Big Adventures

0800 945 3327 (within New Zealand) | +64 (0) 3 365 1355 | **1800 107 715** (within Australia)

info@wildearth-travel.com | **wildearth-travel.com**

Wild Earth Travel

Small Ships, Big Adventures

wildearth-travel.com

info@wildearth-travel.com

INSIDE YOUR SHIP



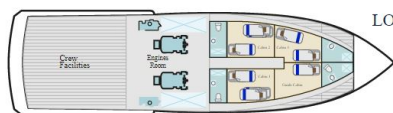
SUNDECK



UPPER DECK

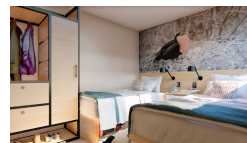


MAIN DECK



LOWER DECK

Cabin



Wild Earth Travel

Small Ships, Big Adventures

0800 945 3327 (within New Zealand) | +64 (0) 3 365 1355 | 1800 107 715 (within Australia)

info@wildearth-travel.com | wildearth-travel.com



Wild Earth Travel

Small Ships, Big Adventures

wildearth-travel.com

info@wildearth-travel.com

PRICING

20-Jul-2025 to 26-Jul-2025

Cabin	4125 USD pp
-------	-------------

03-Aug-2025 to 09-Aug-2025

Cabin	4125 USD pp
-------	-------------

17-Aug-2025 to 23-Aug-2025

Cabin	4125 USD pp
-------	-------------

31-Aug-2025 to 06-Sep-2025

Cabin	4125 USD pp
-------	-------------

14-Sep-2025 to 20-Sep-2025

Cabin	4125 USD pp
-------	-------------

28-Sep-2025 to 04-Oct-2025

Cabin	4125 USD pp
-------	-------------

12-Oct-2025 to 18-Oct-2025

Cabin	4125 USD pp
-------	-------------

26-Oct-2025 to 01-Nov-2025

Cabin	4125 USD pp
-------	-------------

09-Nov-2025 to 15-Nov-2025

Cabin	4125 USD pp
-------	-------------

23-Nov-2025 to 29-Nov-2025

Cabin	4125 USD pp
-------	-------------

07-Dec-2025 to 13-Dec-2025

Cabin	4125 USD pp
-------	-------------

21-Dec-2025 to 27-Dec-2025

Cabin	6323 USD pp
-------	-------------

04-Jan-2026 to 10-Jan-2026

Cabin	4350 USD pp
-------	-------------

18-Jan-2026 to 24-Jan-2026

Cabin	4350 USD pp
-------	-------------

01-Feb-2026 to 07-Feb-2026

Cabin	4350 USD pp
-------	-------------

15-Feb-2026 to 21-Feb-2026

Cabin	4350 USD pp
-------	-------------

01-Mar-2026 to 07-Mar-2026

Cabin	4350 USD pp
-------	-------------

15-Mar-2026 to 21-Mar-2026

Cabin	4350 USD pp
-------	-------------

29-Mar-2026 to 04-Apr-2026

Cabin	4350 USD pp
-------	-------------

12-Apr-2026 to 18-Apr-2026

Cabin	4350 USD pp
-------	-------------

26-Apr-2026 to 02-May-2026

Cabin	4350 USD pp
-------	-------------

10-May-2026 to 16-May-2026

Cabin	4350 USD pp
-------	-------------



Wild Earth Travel
Small Ships, Big Adventures

0800 945 3327 (within New Zealand) | +64 (0) 3 365 1355 | **1800 107 715** (within Australia)

info@wildearth-travel.com | wildearth-travel.com

Wild Earth Travel

Small Ships, Big Adventures

wildearth-travel.com

info@wildearth-travel.com

24-May-2026 to 30-May-2026

Cabin	4350 USD pp
-------	-------------

21-Jun-2026 to 27-Jun-2026

Cabin	4350 USD pp
-------	-------------

05-Jul-2026 to 11-Jul-2026

Cabin	4350 USD pp
-------	-------------

19-Jul-2026 to 25-Jul-2026

Cabin	4350 USD pp
-------	-------------

02-Aug-2026 to 08-Aug-2026

Cabin	4350 USD pp
-------	-------------

16-Aug-2026 to 22-Aug-2026

Cabin	4350 USD pp
-------	-------------

30-Aug-2026 to 05-Sep-2026

Cabin	4350 USD pp
-------	-------------

13-Sep-2026 to 19-Sep-2026

Cabin	4350 USD pp
-------	-------------

08-Nov-2026 to 14-Nov-2026

Cabin	4350 USD pp
-------	-------------

22-Nov-2026 to 28-Nov-2026

Cabin	4350 USD pp
-------	-------------

06-Dec-2026 to 12-Dec-2026

Cabin	4350 USD pp
-------	-------------

20-Dec-2026 to 26-Dec-2026

Cabin	6525 USD pp
-------	-------------

ADDITIONAL CHARGES:

**Galapagos National Park Entrance
fee & Galapagos Transit card 220
USD pp**

Wild Earth Travel
Small Ships, Big Adventures

0800 945 3327 (within New Zealand) | +64 (0) 3 365 1355 | **1800 107 715** (within Australia)

info@wildearth-travel.com | wildearth-travel.com