



# Wild Earth Travel

*Small Ships, Big Adventures*

**wildearth-travel.com**

**info@wildearth-travel.com**

visit a lava tunnel (depending on the itinerary) and learn how these extraordinary formations were created by ancient volcanic eruptions. Highlights: Giant tortoises, Darwin finches, barn owls, white-cheeked pintails, Galapagos flycatchers, Lava tunnels.

## DAY 2 AM: CORMORANT POINT / DEVIL'S CROWN PM: POST OFFICE BAY

Punta Cormorant is located in the north of Floreana and it is known for its large coastal lagoon with American flamingos, white -cheeked pintails, black -necked stilts and other shorebirds. There is a beautiful white sand beach which is an important nesting ground for green sea turtles where we can also see rays and reef sharks. In recent years, a small group of blue footed boobies have started to breed right by the trail. This is also a great trail to look at endemic plants. Snorkel: It will be done at Devil's Crown, a heavily eroded little volcano right by Floreana island. This is considered by many as one of the best snorkeling sites in the entire archipelago as the current funnels plankton through the Crown, attracting huge schools of snapper, Creole fish parrot fish, angelfish, reef sharks, sea turtles, rays and a phenomenal amount of marine life. Highlights: American flamingo, blue -footed booby, frigatebirds, tropicbirds, Galapagos shearwaters, sea lions, sea turtle nesting site, finches, shorebirds, coral -sand beach. Floreana is famous for the tales of German settlers and the baroness during the late 1920's and 30 's. Assassinations, disappearances and other unsolved mysteries are the ingredients of this fascinating story. Post office bay was often used by whalers to anchor their ships and go up to the highlands to get freshwater and tortoises. Most boats visiting the Galapagos had to come to this place sooner or later, so a system of mail was established more than 200 years ago: a barrel near the beach became the way to leave messages to other ships and also to the outside world. This mail system is still in use and will allow you to send postcards from the Galapagos to the outside world. Aside from a small beautiful beach and a lava tunnel, the area is great for dinghy tours to look for sea lions, green sea turtles, shorebirds, small sharks and, with some luck, Galapagos penguins. Snorkel: There is great snorkel from the beach, as you can see lots of sea turtles, rays, great diversity of fish and, if you are really lucky, Galapagos penguin. Highlights: Sea Lions, sea turtles, finches, shorebirds, marine iguanas, penguins.

## DAY 3 AM: SUAREZ POINT AM: GARDNER BAY

This rocky trail is one the most amazing nature walks you can do in the Galapagos islands. From the moment you set foot on the island and all the way along the trail the amount and diversity of fauna is truly amazing. Sea lions and marine iguanas will be the first ones welcoming us, followed by large colonies of sea birds, including Nazca and Blue -footed boobies, gulls and

tropicbirds. At the end of the trail we will visit a colony of waved albatross (April to January), the largest bird in the islands and one of the most interesting because of its powerful flight and elaborate courtship. Waved albatross only nest at Española, so this is the only place where you will see them at close range. Highlights: Sea lions, Waved Albatross, Galapagos hawks, Española mockingbirds, Darwin finches, marine iguanas, Nazca & Blue -footed Boobies, Red -billed Tropicbirds, Swallow -tailed gulls, herons, lava lizards, herons. Gardner beach is undoubtedly one of the most beautiful and interesting beaches to visit in the Galapagos. It's fine coral sand and turquoise water give it a totally tropical appearance, which contrasts with the presence of sea lions basking in the beach. You will have the opportunity to walk along the beach and learn about the biology of sea lions and other endemic species, such as the Española mockingbird, marine iguanas and Galapagos hawks. Snorkel: There are several great snorkeling places at Gardner bay. It is a fantastic site to swim with sea lions, reef sharks, rays and many species of fish, including; Angelfish, Parrotfish, Damselfish, Surgeonfish and many others. Highlights: Coral sand beach, sea lions, Galapagos hawks, Española mockingbirds, Darwin finches, marine iguanas.

## DAY 4 AM: INTERPRETATION CENTER / KICKER ROCK PM: LOBOS ISLAND

Located in the outskirts of Puerto Baquerizo, this center is dedicated to the history of human presence in the Galapagos. Since the times of the early Spanish explorers to the present times, including illustrious visitors such as Charles Darwin, this permanent exhibition will take you through the dangers and struggles of the first settlers trying to survive the harsh Galapagos environment. Highlights: Endemic plants, exhibition on human history. Trail: 0,2 km / 650 ft Rising up vertically to more than 460 ft. high, Kicker Rock is an imposing volcanic formation a couple of miles off the coast of San Cristobal. Its vertical cliffs are a breeding ground to boobies and tropicbirds, while the slopes in the northern side host breeding colonies of frigatebirds. No landing allowed but a circumnavigation will give spectacular views of the rock while you look for birds from the sundeck. Snorkel: Depending on the itinerary, snorkel is allowed around Kicker Rick. Very good place to see sharks, sea turtles, rays and a lot of different species of fish. Great diversity of invertebrates growing in the vertical walls. Highlights: Scenery, Boobies, frigatebirds, pelicans, tropicbirds. Lobos island is a small islet separated from San Cristobal by a narrow channel, forming a sheltered bay where sea lion pups play in tidal pools. Despite its small size, the island is surprisingly packed with wildlife, especially with "lobos marinos", the Spanish name for sea lions. Groups of sea lions will welcome you at the landing spot, but as you walk a few steps inland, male frigatebirds displaying their inflated red balloons will be perched on the bushes and trees. A small colony of blue footed boobies, which often nest right on the trail, will give you the opportunity to

Wild Earth Travel

*Small Ships, Big Adventures*

**0800 945 3327** (within New Zealand) | +64 (0) 3 365 1355 | **1800 107 715** (within Australia)

info@wildearth-travel.com | **wildearth-travel.com**





# Wild Earth Travel

*Small Ships, Big Adventures*



**wildearth-travel.com**

**info@wildearth-travel.com**

observe their famous courtship dance. Snorkel: This is a great snorkeling location as the water are usually calm and the sea lions often play with divers to show off their swimming skills. Sea turtles and rays are often seen resting in the sandy bottoms. Highlights: Galapagos sea lions, marine Iguanas, magnificent & great frigatebirds, blue -footed Boobies, San Cristobal Lava Lizards.

## DAY 5 AM: BACHAS

Bachas gets its name from the remains of two large barges (mispronounced by locals as "bachas") left by the Americans during WWII. At low tide you can still see the iron skeletons of the barges buried in the white sand. From November till May, this place is also one of the most important sea turtle nesting grounds in the entire Galapagos islands. There are also several small saltwater lagoons where we often see flamingoes, herons, and other aquatic birds. Highlights: American flamingoes, white cheeked pintails, sandpipers, lava gulls, blue footed boobies.

### Please Note:

Itineraries are subject to change.



Wild Earth Travel

*Small Ships, Big Adventures*

**0800 945 3327** (within New Zealand) | +64 (0) 3 365 1355 | **1800 107 715** (within Australia)

info@wildearth-travel.com | **wildearth-travel.com**

# Wild Earth Travel

*Small Ships, Big Adventures*

**wildearth-travel.com**

**info@wildearth-travel.com**

## YOUR SHIP: BONITA

<b>YOUR SHIP:</b>	<b>Bonita</b>
<b>VESSEL TYPE:</b>	<b>Small Ship</b>
<b>LENGTH:</b>	<b>25 meters</b>
<b>PASSENGER CAPACITY:</b>	<b>16</b>
<b>BUILT/REFURBISHED:</b>	<b>2019</b>



Welcome area: Totally Furnished

Social area: Artistic decoration inspired on endemic species of Galapagos. Direct access to the bar.

Dining area: Vegan and vegetarian options. Coffee and water station.

Cabins: Fully Equipped, 4 Cabins in the upper deck, 2 Cabin in the main deck, 3 Cabins in the lower deck. All cabins offers private facilities such as: private bathrooms, cold/hot water, air conditioning, towel dryer, safe.

Sundeck: Equipped with 6 chairs to rest and admire amazing landscapes.

Amenities: Shampoo, conditioner, soap.

Exceptional Service: The physical capacity of the cruise is 16 passengers. This means that we have the space to accommodate single passengers and tour leaders, creating a very personalized on board experience.

Wild Earth Travel

*Small Ships, Big Adventures*

**0800 945 3327** (within New Zealand) | +64 (0) 3 365 1355 | **1800 107 715** (within Australia)

info@wildearth-travel.com | **wildearth-travel.com**

# Wild Earth Travel

*Small Ships, Big Adventures*

[wildearth-travel.com](http://wildearth-travel.com)

[info@wildearth-travel.com](mailto:info@wildearth-travel.com)

## INSIDE YOUR SHIP



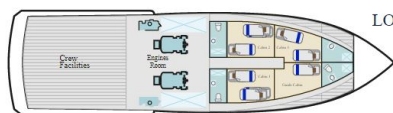
SUNDECK



UPPER DECK

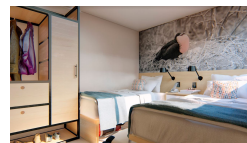


MAIN DECK



LOWER DECK

Cabin



Wild Earth Travel

*Small Ships, Big Adventures*

0800 945 3327 (within New Zealand) | +64 (0) 3 365 1355 | 1800 107 715 (within Australia)

[info@wildearth-travel.com](mailto:info@wildearth-travel.com) | [wildearth-travel.com](http://wildearth-travel.com)



# Wild Earth Travel

*Small Ships, Big Adventures*

[wildearth-travel.com](http://wildearth-travel.com)

[info@wildearth-travel.com](mailto:info@wildearth-travel.com)

## PRICING

**28-Jun-2025 to 02-Jul-2025**

Cabin	2750 USD pp
-------	-------------

**12-Jul-2025 to 16-Jul-2025**

Cabin	2750 USD pp
-------	-------------

**26-Jul-2025 to 30-Jul-2025**

Cabin	2750 USD pp
-------	-------------

**09-Aug-2025 to 13-Aug-2025**

Cabin	2750 USD pp
-------	-------------

**23-Aug-2025 to 27-Aug-2025**

Cabin	2750 USD pp
-------	-------------

**06-Sep-2025 to 10-Sep-2025**

Cabin	2750 USD pp
-------	-------------

**20-Sep-2025 to 24-Sep-2025**

Cabin	2750 USD pp
-------	-------------

**04-Oct-2025 to 08-Oct-2025**

Cabin	2750 USD pp
-------	-------------

**18-Oct-2025 to 22-Oct-2025**

Cabin	2750 USD pp
-------	-------------

**01-Nov-2025 to 05-Nov-2025**

Cabin	2750 USD pp
-------	-------------

**15-Nov-2025 to 19-Nov-2025**

Cabin	2750 USD pp
-------	-------------

**29-Nov-2025 to 03-Dec-2025**

Cabin	2750 USD pp
-------	-------------

**13-Dec-2025 to 17-Dec-2025**

Cabin	2750 USD pp
-------	-------------

**27-Dec-2025 to 31-Dec-2025**

Cabin	4125 USD pp
-------	-------------

**10-Jan-2026 to 14-Jan-2026**

Cabin	2900 USD pp
-------	-------------

**24-Jan-2026 to 28-Jan-2026**

Cabin	2900 USD pp
-------	-------------

**07-Feb-2026 to 11-Feb-2026**

Cabin	2900 USD pp
-------	-------------

**21-Feb-2026 to 25-Feb-2026**

Cabin	2900 USD pp
-------	-------------

**07-Mar-2026 to 11-Mar-2026**

Cabin	2900 USD pp
-------	-------------

**21-Mar-2026 to 25-Mar-2026**

Cabin	2900 USD pp
-------	-------------

**04-Apr-2026 to 08-Apr-2026**

Cabin	2900 USD pp
-------	-------------

**18-Apr-2026 to 22-Apr-2026**

Cabin	2900 USD pp
-------	-------------

Wild Earth Travel  
*Small Ships, Big Adventures*

**0800 945 3327** (within New Zealand) | +64 (0) 3 365 1355 | **1800 107 715** (within Australia)

[info@wildearth-travel.com](mailto:info@wildearth-travel.com) | [wildearth-travel.com](http://wildearth-travel.com)

# Wild Earth Travel

*Small Ships, Big Adventures*

**wildearth-travel.com**

**info@wildearth-travel.com**

**02-May-2026 to 06-May-2026**

Cabin	2900 USD pp
-------	-------------

**28-Nov-2026 to 02-Dec-2026**

Cabin	2900 USD pp
-------	-------------

**16-May-2026 to 20-May-2026**

Cabin	2900 USD pp
-------	-------------

**12-Dec-2026 to 16-Dec-2026**

Cabin	2900 USD pp
-------	-------------

**30-May-2026 to 03-Jun-2026**

Cabin	2900 USD pp
-------	-------------

**13-Jun-2026 to 17-Jun-2026**

Cabin	2900 USD pp
-------	-------------

**27-Jun-2026 to 01-Jul-2026**

Cabin	2900 USD pp
-------	-------------

**11-Jul-2026 to 15-Jul-2026**

Cabin	2900 USD pp
-------	-------------

**25-Jul-2026 to 29-Jul-2026**

Cabin	2900 USD pp
-------	-------------

**08-Aug-2026 to 12-Aug-2026**

Cabin	2900 USD pp
-------	-------------

**22-Aug-2026 to 26-Aug-2026**

Cabin	2900 USD pp
-------	-------------

**05-Sep-2026 to 09-Sep-2026**

Cabin	2900 USD pp
-------	-------------

**19-Sep-2026 to 23-Sep-2026**

Cabin	2900 USD pp
-------	-------------

**14-Nov-2026 to 18-Nov-2026**

Cabin	2900 USD pp
-------	-------------

**Wild Earth Travel**  
*Small Ships, Big Adventures*

**0800 945 3327** (within New Zealand) | +64 (0) 3 365 1355 | **1800 107 715** (within Australia)

info@wildearth-travel.com | wildearth-travel.com



# Wild Earth Travel

*Small Ships, Big Adventures*



**wildearth-travel.com**

**info@wildearth-travel.com**

## PRICING

26-Dec-2026 to 30-Dec-2026

Cabin

4350 USD pp



Wild Earth Travel

*Small Ships, Big Adventures*

**0800 945 3327** (within New Zealand) | +64 (0) 3 365 1355 | **1800 107 715** (within Australia)

info@wildearth-travel.com | **wildearth-travel.com**