



## FROM THE ST LAWRENCE TO GREENLAND, THE LAST MOMENTS OF WINTER

Winter is almost over. Although the ice has begun to break up in the, a blanket of white still covers the tops of the conifers that make up the boreal forest. On this cruise in the delicious comfort of Le Commandant Charcot, the cliffs of Gaspé and Forillon National Park hide the mysteries of the hinterland, while the Saguenay enchants with its boreal forests and the Magdalen Islands offer a variety of extraordinary landscapes including drifting ice floes, sandy beaches covered in a blanket of pure white, and towering red sandstone cliffs. On Greenland's frozen south-west coast, the sheer vastness of the landscape stops time as the broken ice takes possession of the land. Here, the colour white reveals its nuances in the drifting icebergs, broken sea ice, majestic fjords and jagged mountains that form the changing landscape.



### ITINERARY

#### Day 1 Québec

The capital of "La Belle Province" sits at the confluence of the St Charles River and the Gulf of St Lawrence in south-east Canada. Founded in the 17th century, the city still has an encircling wall, a historic civil engineering work and the only one of its kind remaining in North America. You will love the postcard-perfect stone houses of Old Quebec, the historic district listed as a UNESCO World Heritage site. Shopping is a pleasure in pedestrian streets such as Petit-Champlain Street, or you can relax over a spruce beer, seasoned with pine buds. Dufferin Boardwalk, an esplanade near the emblematic Chateau Frontenac, is the perfect place for views of the river and old city.



# Wild Earth Travel

*Small Ships, Big Adventures*

**wildearth-travel.com**

**info@wildearth-travel.com**

## Days 2 - 3 La Baie (Saguenay)

During the long winter months, in the majestic Saguenay Valley, the borough of La Baie is cloaked in an aura of mystery. Here, the striking contrasts of its pristine lands, where nature displays its full splendour, invite you to experience a unique moment alongside the Saguenayens, a people amongst the most welcoming and hospitable in the world. During a snowshoe walk or a dog sled outing, as a passenger or a musher, take the time to observe immaculate nature bordered by a thick ice floe, where Le Commandant Charcot will remain for several days, and you will be able to disembark. Each winter, hundreds of colourful huts set up on these frozen waters to practice traditional ice fishing. You will be initiated into these ancestral techniques and have the pleasure of tasting freshly caught rockfish.

## Day 4 Sailing River Saint Lawrence and going through its locks

Linking the Atlantic Ocean to the Great Lakes region inland, the Saint Lawrence Seaway was inaugurated in 1959, more than 250 years after the initial construction aiming to avoid the rapids obstructing navigation in these parts. This large engineering project, which required four years of huge work, offers a unique sailing experience, punctuated by the passage of the different locks marking out this corridor, which is almost 4,000 km long.

## Day 5 Gaspé

In the glacial darkness of the Canadian winter, Gaspé stands proud like a preserved and authentic jewel at the edge of the dark waters of the Gulf of Saint Lawrence. Nature seems to be holding its breath. The captivating Mount Jacques-Cartier, the highest point of the Chic-Choc Mountains range and the South, is dressed with an immaculate coat of snow, while the frozen rivers slowly wind their way, fixing time in their icy embrace. During a snowshoe walk, fall in love with the captivating landscapes of the L'Anse-au-Griffon Valley, right in the heart of the Forillon National Park. Then, in Percé, opposite the famous eponymous Rock, dive into the natural beauty of the "magic forest", where thousands of conifers decked out in an immaculate white cloak are like silent guardians watching over this isolated piece of land. You may also fall in love with this charming town, where the exciting history and the conviviality of the locals come together in a delightful blend.

## Days 6 - 7 Cap-aux-Meules, Magdalen Islands

Although it is the administrative and economic centre of the Magdalen Islands archipelago, in the Gulf of Saint Lawrence, the village of Cap-aux-Meules remains a peaceful location and is ideal for exploring preserved nature. Located on the eponymous island, in reference to the sandstone rocks of the cape that were used in the past to make grindstones, the location is above all considered to be the maritime gateway to the archipelago. In this respect, it offers privileged access to many sites renowned for their natural and historic heritage, such as the village of Havre-Aubert which is a member of the Most Beautiful Villages of Quebec.

## Day 8 Sailing Saint Lawrence Gulf

In the Gulf of Saint Lawrence, the waters are still partially frozen but the ice break-up has begun. The broken-up ice makes for a fascinating spectacle, forming shapes that seem to be dancing across the waves. You will sail in the Gulf of Saint Lawrence, following in the footsteps of Jacques Cartier, who reached it during his first voyage in 1534. From the bridge, if luck is on your side, you will contemplate the seals and belugas that populate the region during this season. In the distance, the boreal forests, their peaks whitened by the last snow, offer you the idealised image of this piece of Canada. A moment of indescribable magic.

## Days 9 - 10 At sea aboard Le Commandant Charcot

Spend exceptional moments sailing aboard Le Commandant Charcot, the world's first luxury polar exploration vessel and the first PC2-class polar cruise ship capable of sailing into the very heart of the ice, on seas and oceans which the frozen conditions render inaccessible to ordinary ships. Le Commandant Charcot is fitted with oceanographic and scientific equipment selected by a committee of experts. Take advantage of the on-board lectures and opportunities for discussion with these specialists to learn more about the poles. Participate in furthering scientific research with PONANT and let us discover together what these fascinating destinations have yet to reveal to us.

## Day 11 Qaqortoq

Follow the Davis Strait currents and Qaqortoq, the largest town in southern Greenland, reveals itself in a rocky setting covered in immaculate white in

Wild Earth Travel  
*Small Ships, Big Adventures*

**0800 945 3327** (within New Zealand) | +64 (0) 3 365 1355 | **1800 107 715** (within Australia)

info@wildearth-travel.com | wildearth-travel.com





winter and enchanting green in summer. From the moment your ship enters the fjord edging the town, off in the distance you will be able to glimpse the delightful, brightly-coloured houses built upon the hillsides surrounding this charming fishing port, the most southerly in Greenland. You will have the opportunity to wander around the streets of the town centre which have distinct Danish influences and are home to numerous historical buildings and landmarks, such as the country's famous and oldest fountain, topped with whales. Not far from there, you will also have the chance to discover the town's open-air fish market, where fishermen come to sell the day's catch.

#### Day 12 At sea aboard Le Commandant Charcot

Spend exceptional moments sailing aboard Le Commandant Charcot, the world's first luxury polar exploration vessel and the first PC2-class polar cruise ship capable of sailing into the very heart of the ice, on seas and oceans which the frozen conditions render inaccessible to ordinary ships. Le Commandant Charcot is fitted with oceanographic and scientific equipment selected by a committee of experts. Take advantage of the on-board lectures and opportunities for discussion with these specialists to learn more about the poles. Participate in furthering scientific research with PONANT and let us discover together what these fascinating destinations have yet to reveal to us.

#### Days 13 - 14 Sisimiut

During your cruise, we invite you to discover Sisimiut, founded in 1756 and the second largest town in Greenland. This small town is typical of Greenland, boasting bewitching panoramas: here and there, colourful stilt houses dot the undulating landscape, and the small fishing port stands as the gateway to an icy realm. As for the town centre, it is home to a number of historic buildings, a small church and a museum which retraces the history of the Inuit people, as well as many craft shops. When your ship drops anchor here, you will set out to meet the locals in a typically arctic atmosphere.

#### Day 15 Nuuk

When Erik Le Rouge, the exiled Norse chief, landed on the coast of Nuuk, he found a fertile and welcoming land dotted with fjords. He settled there with a group of his former countrymen, and the Norse remained the principal inhabitants until, over a period of 500 years, their population declined and gave way to the Inuit. Nuuk is situated at the mouth of one of the largest

networks of fjords in the world, where the waters never freeze. The town spreads gently out towards the Davis Strait and enjoys an historic center that is particularly rich in national heritage. The vivid reds, blues, greens and yellows of the houses are a lively contrast to the somber waters of Greenland and serve to lift the spirits of the locals during the Winter months.

#### Please Note:

We are privileged guests in these extreme lands where we are at the mercy of weather and ice conditions. Our navigation, mainly in the fjords, will be determined by the type of ice we come across; as the fast ice must be preserved, we will take this into account from day to day in our itineraries. The sailing programme, outings, activities and observation of fauna cannot be guaranteed and are subject to weather and ice conditions. The experiences are unique and vary from day to day and for each departure. The Captain and the Expedition Leader will make every effort to ensure that your experience is as rich as possible, while respecting safety instructions and regulations imposed by the AECO.



**wildearth-travel.com**

**info@wildearth-travel.com**

## YOUR SHIP: LE COMMANDANT-CHARCOT

**YOUR SHIP:** Le Commandant-Charcot

**VESSEL TYPE:** Polar Luxury Expedition

**LENGTH:** 149.9 meters

**PASSENGER CAPACITY:** 135 cabins

**BUILT/REFURBISHED:** 2018/2019

Be the first aboard Le Commandant-Charcot, the world's luxury polar exploration vessel, and enjoy a unique sailing experience in the Arctic or Antarctic!

With its hybrid propulsion combining liquefied natural gas (LNG) and electric generators, Le Commandant-Charcot has been designed to minimise the environmental impact of travel to the furthest latitudes.

The decoration of the ship, imagined by two internationally renowned design and architecture firms - the studio of Jean-Philippe Nuel and Wilmotte & Associates - is designed to be in harmony with the environment. The approach is contemporary with the desire to create a warm and elegant setting; stone, wood and leather recall the natural environment in which the ship is sailing.

Equipped with just 135 staterooms including 31 suites with balconies and outside views, Le Commandant-Charcot welcomes you in an intimate and refined atmosphere. Outstanding gastronomy in the two restaurants, relaxation in the indoor pool surrounded by its winter garden, relaxation in the well-being area with sauna and Snow Room... Like on a private yacht, each of our guests is unique.

### PUBLIC AREAS

Le Commandant-Charcot has many common areas that are designed and equipped to meet all of your needs while preserving the intimacy of each passenger.

A 177 m<sup>2</sup> reception area includes: A reception/concierge desk, An expeditions desk, The ship's administrative services, The sales office, manned by our Hospitality & Travel Manager officer, Our boutique which sells clothing, jewellery, beauty products, postcards and various accessories, The image & photo desk.

The different lounges: A 302 m<sup>2</sup> main lounge including a 28 m<sup>2</sup> cigar lounge, a tea corner and a bar, with live music on selected evenings, A 400 m<sup>2</sup> panoramic bar and lounge, An open-air Bar.

The recreation spaces

Fitness & Beauty Corner: Fitness room: Elliptic, running machines, bicycles...

Beauty Corner: Hairdresser, Massage rooms, Sauna, Snow Room, Nail Shop.

Pool area: Indoor Pool and winter garden - Outdoor Pool

Theatre: Capacity: 270-276 - Main show room for conferences and live entertainment on selected evenings - State-of-the-art audio and video technology.

Leisure area: Public areas - Library - Medical centre.

16 Zodiac®.



16 Zodiac®.



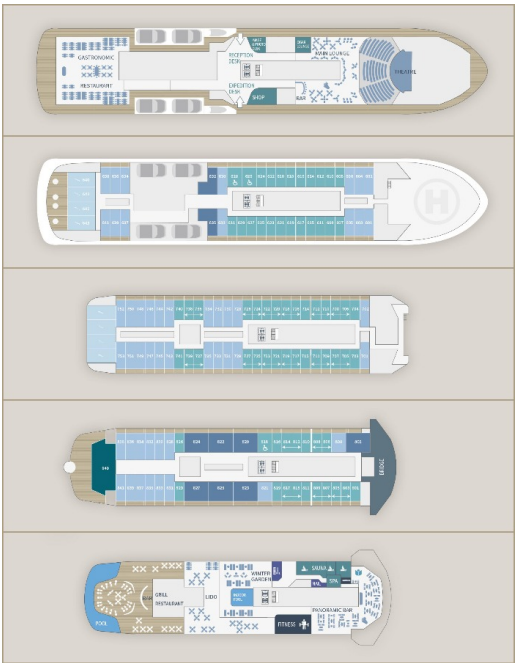


**Wild Earth Travel**  
*Small Ships, Big Adventures*

**wildearth-travel.com**

**info@wildearth-travel.com**

**INSIDE YOUR SHIP**



**Deluxe Suite Deck 6**



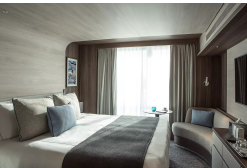
**Deluxe Suite Deck 8**



**Grand Prestige Suite**



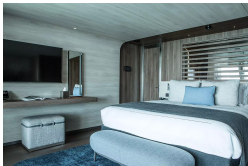
**Prestige Stateroom Deck 7**



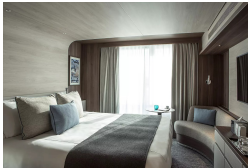
**Deluxe Suite Deck 7**



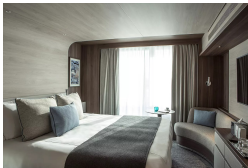
**Duplex Suite**



**Prestige Stateroom Deck 6**



**Prestige Stateroom Deck 8**



**Wild Earth Travel**  
*Small Ships, Big Adventures*

**0800 945 3327** (within New Zealand) | +64 (0) 3 365 1355 | **1800 107 715** (within Australia)

info@wildearth-travel.com | wildearth-travel.com



# Wild Earth Travel

*Small Ships, Big Adventures*



**wildearth-travel.com**

**info@wildearth-travel.com**

## PRICING

**13-Mar-2027 to 27-Mar-2027**

<b>Prestige Stateroom Deck 6</b>	<b>29420 AUD pp</b>
<b>Prestige Stateroom Deck 7</b>	<b>29960 AUD pp</b>
<b>Prestige Stateroom Deck 8</b>	<b>30500 AUD pp</b>
<b>Deluxe Suite Deck 6</b>	<b>31310 AUD pp</b>
<b>Deluxe Suite Deck 7</b>	<b>32650 AUD pp</b>
<b>Deluxe Suite Deck 8</b>	<b>33730 AUD pp</b>
<b>Prestige Suite Deck 7</b>	<b>42880 AUD pp</b>
<b>Prestige Suite Deck 8</b>	<b>44220 AUD pp</b>
<b>Grand Prestige Suite</b>	<b>45560 AUD pp</b>
<b>Privilege Suite Deck 8</b>	<b>48260 AUD pp</b>
<b>Duplex Suite</b>	<b>65740 AUD pp</b>



Wild Earth Travel  
*Small Ships, Big Adventures*

**0800 945 3327** (within New Zealand) | +64 (0) 3 365 1355 | **1800 107 715** (within Australia)

info@wildearth-travel.com | **wildearth-travel.com**



**Wild Earth Travel**  
*Small Ships, Big Adventures*

**wildearth-travel.com**

**info@wildearth-travel.com**

**SPECIAL OFFERS**

Online prices reflect the current brochure fare savings of up to 30%. Prices may change based on demand. Terms and conditions apply. This special offer is subject to availability. Please contact us for more details.