



# Wild Earth Travel

*Small Ships, Big Adventures*

**wildearth-travel.com**

**info@wildearth-travel.com**

## FROM THE IRISH SEA TO THE BAY OF BISCAY - FRANCE & BRITISH ISLES LUXURY CRUISE

PONANT invites you to discover the Atlantic coastline with a 9-day cruise. During this exceptional journey aboard *\_Le Lap erouse\_*, let the wild and melancholic beauty of the British, Irish and French coasts surprise you.

Throughout your journey, you will benefit from an excursion included per person per port of call, to choose from a selection offered by PONANT. During this cruise, visit the Navan Fort archaeological site near Warrenpoint, fill up on chlorophyll in the Lost Gardens of Heligan, leaving from Fowey, or discover the Médoc region's famous "Route des Châteaux" in Pauillac. The diversity of experiences on offer promises you intense and varied moments (to discover the full range of excursions, go to the itinerary tab).

From Glasgow, the largest city in Scotland, boasting a convivial atmosphere and authentic charm, you will sail to Portrush, where you can visit the Giant's Causeway. This massive geological formation is a UNESCO World Heritage Site and features over 40,000 basalt columns. Then you will call in Warrenpoint, a seaside resort nestling in an exceptional natural environment.

You will make a stop in Cobh. This charming and romantic town, steeped in history and legend, will reveal itself through its maze of cobbled streets with, in the background, its 17th-century fortress and its majestic forest.

Then, mythical Cornwall will reveal itself. In Fowey, you will

marvel at Mother Nature's masterpieces. There, you will discover a spellbinding environment of majestic cliffs and vast natural spaces, conducive to escape and tranquillity.

You will cross the English Channel and reach the Breton coastlines with a first port of call in Roscoff. You will be enchanted by this port full of character, which is easily recognisable through its granite facades, testimony to a rich architectural heritage dating back to the 16th and 17th centuries.

You will then head for the Quiberon peninsula. Here, you will discover a dreamy setting between two seas with breathtaking scenery: on one side, the Atlantic Ocean and its wild coastline; on the other, Quiberon Bay and its sandy beaches.

*\_Le Lap erouse\_* will sail along the Atlantic front to the Gironde estuary. During your port of call in Pauillac, among other things, you will have the opportunity to enjoy several visits and wine tastings at some very beautiful wine estates in the Saint-Estèphe, Margaux and Pauillac appellations.

Your cruise will end in Bordeaux, considered the wine capital of the world.



Wild Earth Travel

*Small Ships, Big Adventures*

**0800 945 3327** (within New Zealand) | +64 (0) 3 365 1355 | **1800 107 715** (within Australia)

info@wildearth-travel.com | **wildearth-travel.com**

# Wild Earth Travel

*Small Ships, Big Adventures*

[wildearth-travel.com](http://wildearth-travel.com)

[info@wildearth-travel.com](mailto:info@wildearth-travel.com)



Portrush is a small seaside resort in County Antrim, Northern Ireland, which is famous for hosting The Open golf tournament in 1951 and 2019. The main part of the old town is located on a peninsula that is 1.5-km (1-mile) long, Ramore Head. With three beautiful sandy beaches, the town has a pleasant seaside atmosphere and great appeal due to its proximity to exceptional cultural sites, such as Dunluce Castle or the Giant's Causeway, a unique natural wonder, the most fascinating formation of basalt columns in the world, and the first UNESCO World Heritage Site in Northern Ireland.

## Day 3 - Warrenpoint

On the shores of Carlingford Lough, a fjord marking the eastern end of the border between Ireland and the UK, lies the charming seaside resort of Warrenpoint. Set in stunning natural surroundings and dominated by the Moumes and Cooley peaks, the area is ideal for walking. It is also the starting point for an escape to discover the archaeological site of Fort Navan, also known as Emain Macha, once considered the capital of the Ulster kings. At the Castle Ward, a Victorian tower house, you can gain an insight into the lives of its inhabitants in the 18th century. Or you may prefer to learn about the history of Belfast's water supply at Silent Valley Park.

## Day 4 - Cobh

From the very endearing small town of Cobh, you will set out to discover Cork, rich with a history that goes back to Viking times. During our visit here, we invite you to take an exceptional trip to Blarney Castle, dating from 1446 and renowned for its legends and its ancient stones. At the end of your visit, do not miss the chance of kissing the "Stone of Eloquence", located at the top of the monument, which legend tells will confer its powers upon you.

## Day 5 - Fowey

the world.

## ITINERARY

### Day 1 - Glasgow, Scotland

In the heart of the Clyde Valley, the bustling city of Glasgow contrasts starkly with the wild beauty of the surrounding countryside. Scotland's biggest city overflows with landmarks from its extensive artistic heritage and outstanding architectural tradition. The city's chequerboard layout makes walking through the major pedestrian thoroughfares easy: go with the flow and let the lively street atmosphere take you past the many Victorian monuments. Don't miss the collections on display in the numerous museums and art galleries. The Kelvingrove Art Gallery and Museum is an outstanding example.

### Day 2 - Portrush

Wild Earth Travel

*Small Ships, Big Adventures*

0800 945 3327 (within New Zealand) | +64 (0) 3 365 1355 | 1800 107 715 (within Australia)

[info@wildearth-travel.com](mailto:info@wildearth-travel.com) | [wildearth-travel.com](http://wildearth-travel.com)



# Wild Earth Travel

*Small Ships, Big Adventures*



**wildearth-travel.com**

**info@wildearth-travel.com**

In mythical Cornwall, at the mouth of the River Fowey, the eponymous town surprises and enchants. Edged with lush valleys, Fowey is ideal for those who love nature and the great outdoors and are looking to escape and relax. The charming little town has many coastal hiking trails. Stroll through its narrow streets of its picturesque old town, which was home to the British novelist and playwright Daphne du Maurier as well as inspiring her work.

## Day 6 - Roscoff

Once a city of corsairs, the port of Roscoff is now a popular seaside resort proud to have been labelled a "Small Town with Character". From its tumultuous and fascinating past, Roscoff has preserved an exceptional architectural heritage from the 16th and 17th centuries. Its historic centre is brimming with relics from the past: the magnificent granite mansions of shipowners, the Notre-Dame-de-Croaz-Batz gothic church, and the Old Port, once the stronghold of smugglers and merchants. The town is also known for its foreshore, which boasts a rich algal biodiversity. Its study, beginning in 1872, led to the creation of the first European research and teaching centre in marine biology and oceanography, the Station Biologique de Roscoff.

## Day 7 - Quiberon (Port - Haliguen)

Welcome to the Quiberon peninsula in the Morbihan, Brittany's wild and contrasting landscape. On the Atlantic Ocean side, you will see stretches of wild coastline with rugged, windswept cliffs, and on the Quiberon Bay side, long sandy beaches overlooking emerald waters. Port Haliguen, a ten-minute walk from Quiberon, is a marina that has retained all its charms of yesteryear.

## Day 8 - Pauillac

Discover Pauillac, a town in southwestern France located a few kilometres away from Bordeaux, stretching along the Gironde. The undisputed capital of Medoc, Pauillac will open up its magical universe for you, from culture and

heritage to vineyards and chateaux. This stop will be a voyage of myriad flavours, particularly during the tasting of the region's wines, revealing their soft ruby colours and reflections turning amber with time. Enjoy both a sensorial adventure and an adventure into the heart of the town. Don't miss the visit of Saint Martin's Church or the mysterious grotto of Artigues, dominated by a statue of the Virgin Mary. As for the Aspic Tower, it is topped with a dome from which the harvesters' work used to be overseen.

## Day 9 - Bordeaux

Bordeaux stretches along the banks of the Garonne river, in South-West France. Its rich wine tradition makes it the world capital of wine. Let yourself be carried away by the history of the Port de la Lune, made a UNESCO World Heritage site for its prestigious classical architecture. On the famous Place de la Bourse, the past and the present unite: here you can observe the majestic old buildings reflected in the contemporary Miroir d'eau creation.

### Please note:

Itineraries are subject to change.

# Wild Earth Travel

*Small Ships, Big Adventures*



**wildearth-travel.com**

**info@wildearth-travel.com**

## YOUR SHIP: LE LAPEROUSE

<b>YOUR SHIP:</b>	<b>Le Laperouse</b>
<b>VESSEL TYPE:</b>	<b>Luxury</b>
<b>LENGTH:</b>	<b>127 metres</b>
<b>PASSENGER CAPACITY:</b>	<b>92 cabins</b>
<b>BUILT/REFURBISHED:</b>	<b>2017/2018</b>

Featuring innovative and environmentally-friendly equipment, elegantly designed cabins, spacious suites with large windows, and lounge areas that open onto the outside, this new limited-capacity yacht boasting just 92 cabins and suites will offer you a truly unique cruising experience.

Aboard this ship that flies the French flag, you will experience the incomparable pleasure of an intimate cruise, with the possibility of exploring an ever-increasing range of destinations in an ethnic-chic ambiance with luxury service.

Experience a luxurious setting where the accent is on authenticity and passion for travel.

### RESTAURANTS

As it is an essential part of French culture, gastronomy will naturally have pride of place aboard this new ship. Through its two restaurants, Le Laperouse will invite you on a journey to elegance and epicureanism.

In a relaxed atmosphere, a first dining area located on Deck 3 and able to seat 70 will serve grilled meats daily, along with a variety of salads and desserts.

To the back of Deck 4, you will find a 260 m<sup>2</sup> panoramic restaurant which can accommodate all of our passengers in a

single sitting. Designed differently to that on our other ships, this dining area, which opens onto the outside, will have a buffet of salads, desserts and cheeses at your disposal. Our discreet and attentive crew will provide table service for hot meals.

### PUBLIC AREAS

Like Le Boreal and its sisterships, Le Laperouse has many common areas that are designed and equipped to meet all of your needs while preserving the intimacy of each passenger.

A 140 m<sup>2</sup> reception area includes: A reception/concierge desk, An excursions desk, The ship's administrative services, The sales office, manned by our Guest Relations Officer, Our 50 m<sup>2</sup> boutique which sells clothing, jewellery, beauty products, postcards and various accessories, Toilets accessible to passengers with reduced mobility.

A new hydraulic platform with adjustable height provides: Easier boarding than on any other cruise ship, Easier Zodiac embarkation and disembarkation for expeditions, Easier access to the sea for swimming and practising various water sports such as kayaking or paddle-boarding.

A pool deck offering: A pool with a panoramic view, equipped with a counter-current swimming system, A pleasant solarium, An outdoor bar and lounge with armchairs and sofas.

A 200 m<sup>2</sup> main lounge which can accommodate all of our passengers to share convivial moments and to host activities organised during the day or evening.

Lastly, a theatre that seats 188, equipped with: The latest sound and lighting technology, A LED wall as the stage backdrop, for the projection of high-resolution images and videos.

Wild Earth Travel

*Small Ships, Big Adventures*

**0800 945 3327** (within New Zealand) | +64 (0) 3 365 1355 | **1800 107 715** (within Australia)

info@wildearth-travel.com | **wildearth-travel.com**





# Wild Earth Travel

*Small Ships, Big Adventures*



**wildearth-travel.com**

**info@wildearth-travel.com**



and videos.



## Wild Earth Travel

*Small Ships, Big Adventures*

**0800 945 3327** (within New Zealand) | +64 (0) 3 365 1355 | **1800 107 715** (within Australia)

info@wildearth-travel.com | **wildearth-travel.com**

# Wild Earth Travel

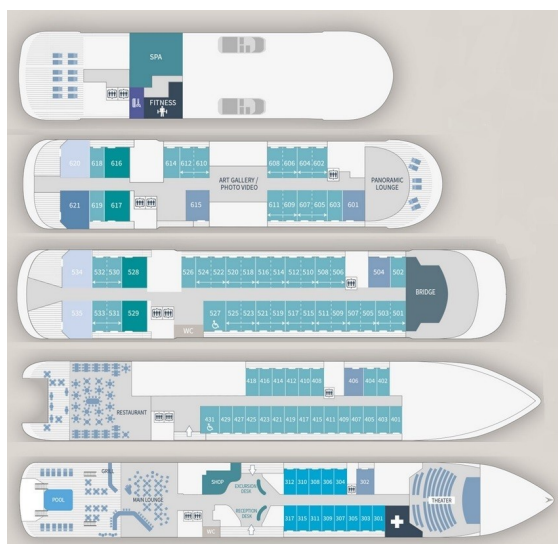
*Small Ships, Big Adventures*



[wildearth-travel.com](http://wildearth-travel.com)

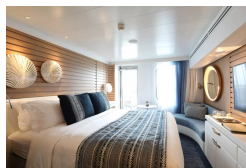
[info@wildearth-travel.com](mailto:info@wildearth-travel.com)

## INSIDE YOUR SHIP

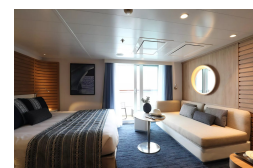


- Owner's Suite Deck 6
- Privilege Suites Deck 5-6
- Grand Deluxe Suites Deck 5-6
- Prestige Suites Deck 5-6
- Deluxe Suites Deck 5-6
- Prestige Cabins Deck 4-5-6
- Deluxe Cabins Deck 3

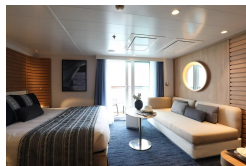
### Deluxe Stateroom



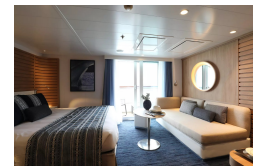
### Deluxe Suite Deck 3



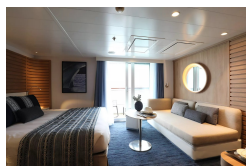
### Deluxe Suite Deck 4



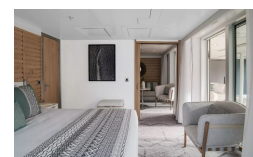
### Deluxe Suite Deck 5



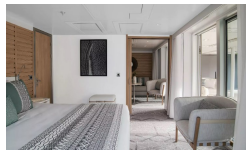
### Deluxe Suite Deck 6



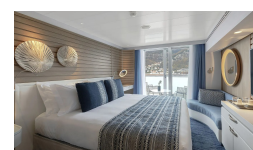
### Grand Deluxe Suite Deck 5



### Grand Deluxe Suite Deck 6



### Prestige Deck 4



Wild Earth Travel  
*Small Ships, Big Adventures*

0800 945 3327 (within New Zealand) | +64 (0) 3 365 1355 | 1800 107 715 (within Australia)

[info@wildearth-travel.com](mailto:info@wildearth-travel.com) | [wildearth-travel.com](http://wildearth-travel.com)



# Wild Earth Travel

*Small Ships, Big Adventures*

**wildearth-travel.com**

**info@wildearth-travel.com**

## PRICING

**24-Sep-2026 to 02-Oct-2026**

<b>Deluxe Stateroom</b>	<b>6770 AUD pp</b>
<b>Prestige Deck 4</b>	<b>7510 AUD pp</b>
<b>Prestige Deck 5</b>	<b>7880 AUD pp</b>
<b>Prestige Deck 6</b>	<b>8330 AUD pp</b>
<b>Deluxe Suite Deck 4</b>	<b>11590 AUD pp</b>
<b>Deluxe Suite Deck 3</b>	<b>11590 AUD pp</b>
<b>Deluxe Suite Deck 5</b>	<b>11590 AUD pp</b>
<b>Deluxe Suite Deck 6</b>	<b>11590 AUD pp</b>
<b>Prestige Deck 5 Suite</b>	<b>15660 AUD pp</b>
<b>Prestige Deck 6 Suite</b>	<b>16470 AUD pp</b>
<b>Privilege Suite Deck 5</b>	<b>17290 AUD pp</b>
<b>Privilege Suite Deck 6</b>	<b>17290 AUD pp</b>
<b>Grand Deluxe Suite Deck 5</b>	<b>18990 AUD pp</b>
<b>Grand Deluxe Suite Deck 6</b>	<b>18990 AUD pp</b>

**Wild Earth Travel**

*Small Ships, Big Adventures*

**0800 945 3327** (within New Zealand) | +64 (0) 3 365 1355 | **1800 107 715** (within Australia)

info@wildearth-travel.com | **wildearth-travel.com**



# Wild Earth Travel

*Small Ships, Big Adventures*



**wildearth-travel.com**

**info@wildearth-travel.com**

## SPECIAL OFFERS

Online prices reflect the current brochure fare savings of up to 30%. Prices may change based on demand. Terms and conditions apply. This special offer is subject to availability. Please contact us for more details.



**Wild Earth Travel**

*Small Ships, Big Adventures*

**0800 945 3327** (within New Zealand) | +64 (0) 3 365 1355 | **1800 107 715** (within Australia)

info@wildearth-travel.com | **wildearth-travel.com**