



Wild Earth Travel

Small Ships, Big Adventures

wildearth-travel.com

info@wildearth-travel.com

FROM THE IONIAN SEA TO THE ADRIATIC - ITALY, CROATIA, MONTENEGRO & GREECE IN LUXURY

Kid Explorers Club in partnership with MAUD FONTENOY FOUNDATION.

Set out to discover the Ionian and Adriatic Seas with PONANT. During a 10-day cruise leaving from Valletta, Le Dumont-d'Urville will take you to Italy, Greece, Montenegro and Croatia.

Throughout your journey, you will benefit from an excursion included per person per port of call, to choose from a selection offered by PONANT. Throughout your journey, you will benefit from an excursion included per person per port of call, to choose from a selection offered by PONANT. During this cruise, visit the former shipyard in Aci Trezza from Taormina, watch a moreška sword dance in Korcula's open-air theatre, or discover Croatian culinary traditions from Dubrovnik. The diversity of experiences on offer promises you intense and varied moments.

Your ship will leave Valletta, the capital of Malta and former stronghold of the Knights of the Order of Malta and set sail towards Sicily. In Taormina, the streets will lead you to the impressive ancient theatre, where the quality of the acoustics is exceptional. And as a constant backdrop: the majestic Mount Etna! In Puglia, Gallipoli, meaning "beautiful town" in Greek, reveals its Hellenic origins and offers up its singular atmosphere, where life is good.

Le Dumont-d'Urville will reach Greece and you will discover Fiskardo, a refined and flowery island, a little-known destination

Wild Earth Travel

Small Ships, Big Adventures

0800 945 3327 (within New Zealand) | +64 (0) 3 365 1355 | **1800 107 715** (within Australia)

info@wildearth-travel.com | **wildearth-travel.com**

Wild Earth Travel

Small Ships, Big Adventures

wildearth-travel.com

info@wildearth-travel.com

in the Ionian archipelago. In Epirus, you will admire Parga and its fortress, built by the Normans in the 14th century, overlooking the pretty fishing port.

Your ship will then set sail towards Montenegro, for an unforgettable cruise in the Bay of Kotor. This impressive gap between two mountain ranges is home to a veritable inland lake with a magical atmosphere; the medieval city of Kotor and its many historical monuments are its jewels.

You will approach Vis, a little and little-known island, ignored by cruise itineraries. Fall under the spell of the historical heritage, which includes Roman ruins and Venetian architecture, of the oldest fishing port in the Adriatic. Then the national park of the island of Mljet, surrounded by a wildly beautiful coastline, will be the occasion for a timeless interlude in the shade of the green oaks and Aleppo pines, between lush vegetation and saltwater lakes. You will also be able to discover the mountain island of Korula and its medieval city, where Marco Polo was born.

Finally, you will make a port of call at Korcula, a medieval city standing on a promontory and protected by fortifications, before heading for Dubrovnik, the appropriately named "pearl of the Adriatic", a UNESCO World Heritage Site. Encircled by medieval ramparts, it is a charming city, with its red-tiled roofs, its palaces, its cloisters and its fountains that will plunge you into the heart of Croatian history.



an history.

ITINERARY

Day 1 VALLETTA

The whole of the Maltese capital Valletta is UNESCO World Heritage listed and occupies a peninsula in the north-east of the island. From the fountain of Tritons to Saint-Elme fort, there are as many majestic streets as there are narrow staircase vennels to explore. The painted loggia and carved corbels on the tall houses will accompany you in your explorations, and you'll rarely be bothered by traffic. You can visit the Grandmasters palace decorated with coats of arms and frescoes. Saint-John's cathedral and the ramparts which have guarded the city since the 16th century are also among the most emblematic sites of the city. Arranged in terraces, the Barrakka Gardens will punctuate your promenade with a green and floral experience.

Day 2 TAORMINA, SICILY

Wild Earth Travel

Small Ships, Big Adventures

0800 945 3327 (within New Zealand) | +64 (0) 3 365 1355 | **1800 107 715** (within Australia)

info@wildearth-travel.com | **wildearth-travel.com**



Wild Earth Travel

Small Ships, Big Adventures

wildearth-travel.com

info@wildearth-travel.com

Located on Sicily's eastern coast, in the province of Messina, the seaside town of Taormina is Sicily's Saint-Tropez, boasting heritage sites, secluded beaches and luxury shopping. You can visit its medieval centre, suspended 300 metres above sea level, where terraces offer a spectacular view of the Mediterranean Sea. Another vestige from its past are the ruins of the Greco-Roman theatre. This extremely well-preserved site attracts visitors who are fascinated by the natural beauty of the area which overlooks a turquoise bay.

Day 3 GALLIPOLI

Gallipoli, which comes from the Greek kalle polis, meaning beautiful town, is very aptly named. Located on the heel of the boot, the town known as "the pearl of Puglia" has many attractions. The whiteness of its façades recalls its Greek origins while its architecture echoes its multiple influences. Its old town, perched on a limestone island, concentrates the cultural heritage of this city with a thousand faces, alternately a Roman colony, then Byzantine, the property of the Popes, Norman, under the rule of Taranto... By itself, it tells the story of the different civilisations of the Mediterranean Sea.

Day 4 FISKARDO, CEPHALONIA

You will discover Fiskardo in the north-east of Kefalonia, a refined, flowery island, a little-known destination in the Ionian Islands. The colourful houses along the seafront present an astonishing architecture with Italian influences. As you step further out on the pier, you will glimpse the coast of Ithaca, the legendary land of King Ulysses. Take the time to sit at an outdoor terrace along the water's edge, under the shade of the awnings: they offer a delightful, relaxing setting. Enjoy the spectacle of the boats moored in the harbour as you savour small meat pies called kreatopita, a Greek speciality.

Days 5 - 6 PARGA

An ancient port in the Epirus region, picturesque Parga is located on the western coast of the Greek mainland. Ancient classical ruins and the Venetian citadel bear witness to the town's colourful history and the diverse influences that shaped it. Take the time to discover this ancient fishing village built like an amphitheatre, by strolling along the picturesque maze of pedestrian streets lined with small, typical Greek houses decorated with flowers and many lively taverns.

Day 7 KOTOR

Situated in one of Montenegro's most beautiful bays, the medieval city of Kotor is a small town full of charm, truly imbued with the traditions and stories of another time. Built between the 12th and 14th centuries, this village, a UNESCO World Heritage Site, has preserved many historical monuments from this epoch. During your stop, be sure to admire the impressive castle that dominates the town, and let yourself fall under the charm of its maze of small streets and intimate squares on which folk festivals featuring magnificent colourful costumes are often organised.

Day 8 VIS, VIS ISLAND & KOMIZA, VIS ISLAND

Discover the beauty of Vis on the island of the same name, an unspoilt haven that has been timidly opened to tourism since 1990, following Croatia's independence. Fall under the spell of its historical heritage, which includes Roman ruins and Venetian architecture. Simplicity and authenticity are the watchwords of this rural territory, which is geared towards organic agriculture as well as responsible viticulture and fishing.

You will approach Vis, a little and little-known island ignored by cruise itineraries. With your yacht at anchor, you will disembark by Zodiac in Komiza, the oldest fishing port in the Adriatic, to spend a pleasant moment in a charming setting. Far from the hustle and bustle of the city, you will set off on foot or by bike to explore the port, its old fishermen's houses in cut stone, its

Wild Earth Travel

Small Ships, Big Adventures

0800 945 3327 (within New Zealand) | +64 (0) 3 365 1355 | **1800 107 715** (within Australia)

info@wildearth-travel.com | **wildearth-travel.com**



Wild Earth Travel

Small Ships, Big Adventures

wildearth-travel.com

info@wildearth-travel.com

small market stalls or cafe terraces and get a taste of the gentle way of life that reigns here. The ballet of the fishing boats is a reminder of the city's essential activity and its strong connection to the sea. A few minutes from there, let yourself be tempted by a dip next to a pretty pebble beach. Opposite the turquoise water stands Our Lady of Pirates, a stunning church that shelters the oldest organ in Dalmatia. You can also enjoy an included experience, such as diving near the shipwrecks from the Second World War or visiting the island in a 4x4 vehicle up to Vis, discovering its singular history.

Dy 9 MLJET & KORČULA

Discover Mljet Island off the Pelješac peninsula. Known for its national park and its protected forests, this Croatian splendid, pristine island offers many opportunities for walking with bays linked to two salt water lakes. On the largest lake, Veliko Jezero, a small island is home to an old Benedictine monastery.

This harbour town has a very special location, presiding on a spur on the north-eastern coast of the island of Korčula. The ramparts in its medieval district provide perfect vantage points over the Pelješac peninsula. To get there, you can take the monumental staircase in the Revelin Tower. Another way is to climb the steps in the shade of palm trees from the Morska Vrata (Marine portal). As you make your way through the little streets, you'll see the bell-tower of Saint Mark's cathedral rise above you. This landmark will help you locate the house where Marco Polo was born. The island also has some of its own famous wines like the red Plavac and the white Posip.

Day 10 DUBROVNIK

Emblem of the Dalmatian coast, Dubrovnik is magnificently positioned on a rocky spur. History is sovereign here, in this ancient city, now a listed UNESCO World Heritage site. You will perhaps be surprised by the proportions of La Placa, the central drag through the city. The sheer width of it can be explained by the fact that it straddles a former lagoon. The elegant houses along La Placa are built in the legendary travertine stone. At Pile gate, you will be greeted by the statue of the patron saint of Dubrovnik, and you can admire the

coastline as you walk along the ramparts. But what's inside Fort Saint John, adjoining the outer walls? A maritime museum and an aquarium featuring rare fish from the Adriatic.

Please note:

Itineraries are subject to change.

Wild Earth Travel

Small Ships, Big Adventures

0800 945 3327 (within New Zealand) | +64 (0) 3 365 1355 | **1800 107 715** (within Australia)

info@wildearth-travel.com | **wildearth-travel.com**



Wild Earth Travel

Small Ships, Big Adventures

wildearth-travel.com

info@wildearth-travel.com

YOUR SHIP: LE BOUGAINVILLE

YOUR SHIP: Le Bougainville

VESSEL TYPE: Luxury

LENGTH:

PASSENGER CAPACITY: 92 cabins

BUILT/REFURBISHED: 2017/2018

Featuring innovative and environmentally-friendly equipment, elegantly designed cabins, spacious suites with large windows, and lounge areas that open onto the outside, this new limited-capacity yacht boasting just 92 cabins and suites will offer you a truly unique cruising experience.

As the first ship in a new series that remains true to the Ponant spirit, Le Bougainville will embody the unique atmosphere that is the cruise line's hallmark: a subtle blend of refinement, intimacy and comfort.

Aboard this ship that flies the French flag, you will experience the incomparable pleasure of an intimate cruise, with the possibility of exploring an ever-increasing range of destinations in an ethnic-chic ambiance with luxury service.

Experience a luxurious setting where the accent is on authenticity and passion for travel.

RESTAURANTS

As it is an essential part of French culture, gastronomy will naturally have pride of place aboard this new ship. Through its two restaurants, Le Bougainville will invite you on a journey to elegance and epicureanism.

In a relaxed atmosphere, a first dining area located on Deck 3

and able to seat 70 will serve grilled meats daily, along with a variety of salads and desserts.

To the back of Deck 4, you will find a 260 m² panoramic restaurant which can accommodate all of our passengers in a single sitting. Designed differently to that on our other ships, this dining area, which opens onto the outside, will have a buffet of salads, desserts and cheeses at your disposal. Our discreet and attentive crew will provide table service for hot meals.

PUBLIC AREAS

Like Le Boreal and its sisterships, Le Bougainville has many common areas that are designed and equipped to meet all of your needs while preserving the intimacy of each passenger.

A 140 m² reception area includes:

A reception/concierge desk, An excursions desk, The ship's administrative services, The sales office, manned by our Guest Relations Officer, Our 50 m² boutique which sells clothing, jewellery, beauty products, postcards and various accessories, Toilets accessible to passengers with reduced mobility.

A new hydraulic platform with adjustable height provides: Easier boarding than on any other cruise ship, Easier Zodiac embarkation and disembarkation for expeditions, Easier access to the sea for swimming and practising various water sports such as kayaking or paddle-boarding.

A pool deck offering: A pool with a panoramic view, equipped with a counter-current swimming system, A pleasant solarium, An outdoor bar and lounge with armchairs and sofas.

A 200 m² main lounge which can accommodate all of our passengers to share convivial moments and to host activities organised during the day or evening.

Wild Earth Travel

Small Ships, Big Adventures

0800 945 3327 (within New Zealand) | +64 (0) 3 365 1355 | **1800 107 715** (within Australia)

info@wildearth-travel.com | wildearth-travel.com

Wild Earth Travel

Small Ships, Big Adventures

wildearth-travel.com

info@wildearth-travel.com

Lastly, a theatre that seats 188, equipped with: The latest sound and lighting technology, A LED wall as the stage backdrop, for the projection of high-resolution images and videos.



and videos.

Wild Earth Travel

Small Ships, Big Adventures

0800 945 3327 (within New Zealand) | +64 (0) 3 365 1355 | **1800 107 715** (within Australia)

info@wildearth-travel.com | **wildearth-travel.com**



wildearth-travel.com

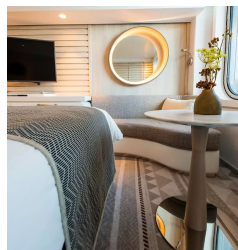
info@wildearth-travel.com

INSIDE YOUR SHIP

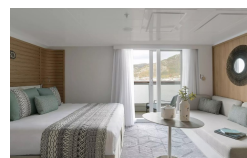


- Owner's Suite
Deck 6
- Privilege Suites
Deck 5-6
- Grand Deluxe Suites
Deck 5-6
- Prestige Suites
Deck 5-6
- Deluxe Suites
Deck 5-6
- Prestige Cabins
Deck 4-5-6
- Deluxe Cabins
Deck 3

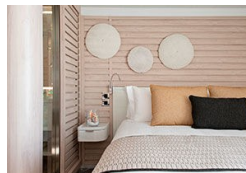
Deluxe Stateroom



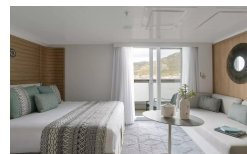
Deluxe Suite



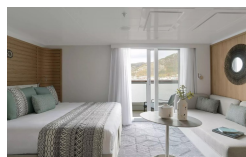
Deluxe Suite Deck 3



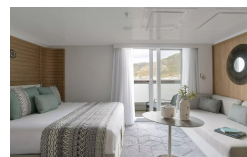
Deluxe Suite Deck 4



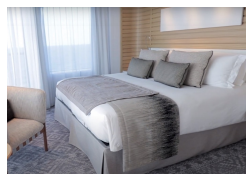
Deluxe Suite Deck 5



Deluxe Suite Deck 6



Grand Deluxe Suite



Grand Deluxe Suite Deck 5



Wild Earth Travel

Small Ships, Big Adventures

wildearth-travel.com

info@wildearth-travel.com

PRICING

18-Aug-2025 to 27-Aug-2025

| | |
|---------------------------|--------------|
| Deluxe Stateroom | 9960 AUD pp |
| Prestige Stateroom Deck 4 | 10500 AUD pp |
| Prestige Stateroom Deck 5 | 11020 AUD pp |
| Prestige Stateroom Deck 6 | 11640 AUD pp |
| Deluxe Suite Deck 6 | 18850 AUD pp |
| Deluxe Suite Deck 5 | 18850 AUD pp |
| Deluxe Suite Deck 4 | 18850 AUD pp |
| Deluxe Suite | 18850 AUD pp |
| Prestige Suite Deck 5 | 20930 AUD pp |
| Prestige Suite Deck 6 | 21460 AUD pp |
| Privilege Suite Deck 6 | 22490 AUD pp |
| Privilege Suite | 22490 AUD pp |
| Grand Deluxe Suite Deck 6 | 27200 AUD pp |
| Grand Deluxe Suite | 27200 AUD pp |
| Owner's Suite | 31220 AUD pp |

27-Aug-2026 to 05-Sep-2026

| | |
|---------------------------|--------------|
| Deluxe Stateroom | 9900 AUD pp |
| Prestige Deck 4 | 10410 AUD pp |
| Prestige Deck 5 | 10920 AUD pp |
| Prestige Deck 6 | 11530 AUD pp |
| Deluxe Suite Deck 4 | 18650 AUD pp |
| Deluxe Suite Deck 6 | 18650 AUD pp |
| Deluxe Suite Deck 3 | 18650 AUD pp |
| Deluxe Suite Deck 5 | 18650 AUD pp |
| Prestige Deck 5 Suite | 20720 AUD pp |
| Prestige Deck 6 Suite | 21230 AUD pp |
| Privilege Suite Deck 6 | 22270 AUD pp |
| Privilege Suite Deck 5 | 22270 AUD pp |
| Grand Deluxe Suite Deck 6 | 26910 AUD pp |
| Grand Deluxe Suite Deck 5 | 26910 AUD pp |

ADDITIONAL CHARGES:

Port Taxes 670 AUD pp



Wild Earth Travel

Small Ships, Big Adventures

wildearth-travel.com

info@wildearth-travel.com

SPECIAL OFFERS

Online prices reflect the current brochure fare savings of up to 30%. Prices may change based on demand. Terms and conditions apply. This special offer is subject to availability. Please contact us for more details.

Wild Earth Travel

Small Ships, Big Adventures

0800 945 3327 (within New Zealand) | +64 (0) 3 365 1355 | **1800 107 715** (within Australia)

info@wildearth-travel.com | **wildearth-travel.com**