

Wild Earth Travel

Small Ships, Big Adventures

wildearth-travel.com

info@wildearth-travel.com

FROM THE ATLANTIC TO THE NORTH SEA, HERITAGE AND LANDSCAPES LUXURY CRUISE

Set sail on an unforgettable 8-day cruise aboard Le Boreal. Historical discoveries and stunning scenery will punctuate this trip taking you from Scotland to Norway.

Departing from Glasgow, Scotland's warm cultural capital with a rich artistic and architectural heritage, you will first sail towards Fort William. This harbour town on the shores of Loch Linnhe is steeped in Scottish history and tradition, close to the beautiful and spectacular scenery of Glencoe.

Le Boreal sails all the way to Loch Ewe, in the north-western Highlands: an inlet with a remarkable subtropical Eden full of red deer, red squirrels, otters, seals and golden eagles.

Then you will head for the Orkney archipelago and its windswept moorland landscape. Stromness, a small fishing port with stone houses, reveals a rich history of Vikings, merchants and sailors.

In the middle of the North Sea, the Scottish archipelago of the Shetlands is rich in unsuspected treasures on its raw territories with jagged coastlines. On Foula, one of the most remote islands, man has learned to live with the elements. The island of Mousa is home to Scotland's best-preserved Broch. Constructed in around 100BC, this tower-shaped fortification served to defend against invaders. Meanwhile, Noss Island is home to numerous colonies of birds, including gannets, puffins, arctic fulmars and many others.

Le Boreal then heads for Norway, stopping off at Bekkjarvik, a

village typical of the region. Your cruise will end in Bergen, famous for its Hanseatic wharf that still carries a few traces of the rich historic past of the city founded by the Vikings.



the Vikings.

ITINERARY

Day 1 GLASGOW, SCOTLAND

In the heart of the Clyde Valley, the bustling city of Glasgow contrasts starkly with the wild beauty of the surrounding countryside. Scotland's biggest city overflows with landmarks from its extensive artistic heritage and outstanding

Wild Earth Travel

Small Ships, Big Adventures

0800 945 3327 (within New Zealand) | +64 (0) 3 365 1355 | **1800 107 715** (within Australia)

info@wildearth-travel.com | **wildearth-travel.com**

Wild Earth Travel

Small Ships, Big Adventures



wildearth-travel.com

info@wildearth-travel.com

architectural tradition. The city's chequerboard layout makes walking through the major pedestrian thoroughfares easy: go with the flow and let the lively street atmosphere take you past the many Victorian monuments. Don't miss the collections on display in the numerous museums and art galleries. The Kelvingrove Art Gallery and Museum is an outstanding example.

Day 2 SAILING ON LOCH LINNHE & FORT WILLIAM

Loch Linnhe is located in the Scottish Highlands, stretching between the Isle of Mull and Fort William. Sail in the heart of picturesque landscapes and admire the formations of the magnificent mountains and valleys surrounding the loch, including the famous Ben Nevis. The pure waters of Loch Linnhe are teeming with marine life; harbour seals may be found among its faithful inhabitants.

A port town on the eastern shore of Loch Linnhe, Fort William is sometimes described as the "Outdoor Capital of the UK." Because it sits at the base of Ben Nevis, the highest peak in the British Isles, and is in close proximity to the dramatic landscape of Glencoe, it is a popular destination for hikers and rock climbers. For those looking for a less adventurous experience, the nearby Ben Nevis Distillery offers tours and tastings, and Old Fort and Old Inverlochy Castle are interesting historical sites.

Day 3 LOCH EWE

Loch Ewe, located in the Northwest Highlands, is a sea loch surrounded by mountains, looking out onto the North Atlantic. It was an assembly point for maritime trade in the past and military ships used to gather there during the Second World War to organise safe convoys to the Arctic. On its shores, the loch shelters a remarkable botanic garden, Inverewe Garden, whose many hundreds of tropical plants and species prosper thanks to the Gulf Stream. Protected from the violent winds by endemic pine trees, the garden, which was created in 1862 by landowner Osgood Mackenzie and his daughter Mairi Sawyer, will unveil unsuspected colours, shapes and perfumes. It is now managed by the National Trust for Scotland. Perhaps you will be lucky enough to glimpse some of Scotland's wild animals: red squirrels, red deer, otters, seals or golden eagles.

Day 4 STROMNESS, ORKNEY

The stone houses stand proudly facing the sea in the charming town of Stromness, the second most populous town in Scotland's Orkney Islands. Long ago called Hamnavoe - meaning "safe harbour" - because of the safety it provided to Viking travellers, sailors and merchants sailing around Great Britain, the town has retained its gentle way of life. Strolling along its picturesque streets will immerse you in the history of the fishermen and whale hunters, but also allow you to discover a lively town with a living culture.

Day 5 FOULA, SHETLAND ISLANDS

Foula, lying some twenty nautical miles west of the Shetlands, is the archipelago's most remote island as well as one of the most remote inhabited British islands: it only has thirty inhabitants, who still observe the Julian calendar, introduced by Julius Caesar in 46 BC. The island rock measures 12.5 km² (4.8 square miles) and is characterised by its high cliffs, the largest of which reach 365 m (almost 1,200 feet). Inland, there are farms in the heart of huge expanses of moors and peat bogs where flocks of sheep and herds of ponies live in total freedom. The Vikings were the first explorers to come here and they named it Fugløy or "bird island". You will be able to explore these green windswept landscapes, to the cliffs of Hiora Wick and Gaada Stack, home to nesting colonies of seabirds, including fulmars, Atlantic puffins and eiders.

Day 6 MOUSA BROCH, SHETLAND ISLANDS & ISLE OF NOSS, SHETLAND ISLANDS

A conical dry stone tower dating back to the end of the Iron Age, the Broch of Mousa is one of the many buildings constructed in the Highlands and in the Hebrides, Orkney and Shetlands archipelagos to fend off invaders. Constructed circa 100 BC, it is the tallest broch still standing, at 13 metres (almost 43 feet), and the best-preserved in Europe. Its excellent state of preservation can be explained among other factors by its isolated location and its massive

Wild Earth Travel

Small Ships, Big Adventures

0800 945 3327 (within New Zealand) | +64 (0) 3 365 1355 | **1800 107 715** (within Australia)

info@wildearth-travel.com | **wildearth-travel.com**

Wild Earth Travel

Small Ships, Big Adventures



wildearth-travel.com

info@wildearth-travel.com

construction: it has a single entrance passage and thick walls, with a diameter that is smaller than that of other brochs. The building was used over the centuries and is mentioned in the Norse sagas, Egil's Saga and the Orkneyinga Saga.

Please note:

Itineraries are subject to change.

Many colonies of birds have chosen to nest on the towering sandstone cliffs on the eastern coast of the Isle of Noss. The many ledges sculpted into the rock effectively make for ideal breeding sites for the gannets, puffins, guillemots, black-legged kittiwakes, razorbills, arctic fulmars and great skuas that populate this territory. Separated from the island of Bressay by a sound of only 100 metres (328 feet), this wild island in the Shetland archipelago has been a national nature reserve of Scotland since 1955. Make the most of this unique opportunity you have to discover this isolated Eden, bathed by the North Sea.

Day 7 BEKKJARVIK

Welcome to a small, typically Norwegian village. Located on the north-east of Selbjørn Island, in Hordaland county, this historical former trading port has managed to retain all its authenticity. The four great burial mounds atop the King's Mountain were long prominent landmarks for the Viking boats sailing in the region.

Day 8 BERGEN

Located at the end of Byfjord, Bergen was the capital of Norway in the 12th and 13th Centuries and has preserved some very beautiful monuments from the time when it was home to royalty. Wandering through Bergen's streets means going back in time, in search of the hidden treasures that have been listed as World Heritage Sites by UNESCO. A veritable openair museum, Bergen is home to a thriving artistic community of painters, potters, jewellers. The Bergen cable car offers you a splendid panorama over the port and the surrounding fjords. Do not miss the visit to the old quarter with its narrow streets, a testimony of the power of the hanseatic League that controlled trade in Northern Europe at the end of the Middle Ages.

Wild Earth Travel

Small Ships, Big Adventures

0800 945 3327 (within New Zealand) | +64 (0) 3 365 1355 | **1800 107 715** (within Australia)

info@wildearth-travel.com | **wildearth-travel.com**

Wild Earth Travel

Small Ships, Big Adventures

wildearth-travel.com

info@wildearth-travel.com

YOUR SHIP: LE BOREAL

YOUR SHIP:	Le Boreal
VESSEL TYPE:	Luxury Expedition / Cruise Ship
LENGTH:	142 meters
PASSENGER CAPACITY:	264 (in twin cabins, 200 in Antarctica)
BUILT/REFURBISHED:	2011

A superb mega-yacht with 132 cabins, she is the fruit of the expertise of the Italian Fincantieri shipyard and French sophistication, as interpreted by designer Jean-Philippe Nuel. Le Boreal remains faithful to our philosophy - to create a unique atmosphere, a subtle blend of luxury, intimacy and well-being. Superior materials, discreet elegance and a tasteful decor combined with exterior and interior lines to reflect a nautical mood, subtly revisited. On board, soothing neutral tones are enlivened by splashes of red, our signature theme linking tradition and innovation to create personal touches in the spirit of a "private yacht".

Cuisine

Loyal to the great French tradition, the haute cuisine on board is worthy of the finest restaurants, where discreet, attentive service is the hallmark.

Our two restaurants welcome you for breakfasts, lunch and dinner. The Gastronomic Restaurant, with a capacity of 268 persons, is situated on Le Liberte Deck and serves you French and international cuisine accompagnied by fine wine. On the Grill Restaurant, you will have the opportunity to eat outside

and enjoy buffet lunch and themed dinner.

Life On Board

Whether you want to join other guests in the theatre or games area (Wii™ consoles, etc), or relax on your own in a quiet corner of the library, Le Boreal has been designed to meet the needs of every guest.

Everything has been done to preserve the independence of each guest to suit their personal tastes: lounges for lectures and shows, a spa in partnership with Carita™, but also more intimate spaces such as the library and internet corner. Comfortable cabins, nearly all with private balcony, are available for families either as triples or as communicating cabins. There is also a games area with Wii™ consoles, children's menus, and a baby-sitting service. Just as if you were on a private yacht, your time is your own to do as you please.

Fitted with the latest equipment (Kinesis Wall, running machine) and in partnership with the famous Carita™ brand, the Beauty Centre on Le Boreal welcomes you for some unforgettable moments of relaxation and pampering (beauty treatments, hairdresser, hammam, balneotherapy).

Wild Earth Travel

Small Ships, Big Adventures

0800 945 3327 (within New Zealand) | +64 (0) 3 365 1355 | **1800 107 715** (within Australia)

info@wildearth-travel.com | **wildearth-travel.com**

Wild Earth Travel

Small Ships, Big Adventures



wildearth-travel.com

info@wildearth-travel.com



eotherapy).

Wild Earth Travel
Small Ships, Big Adventures

0800 945 3327 (within New Zealand) | +64 (0) 3 365 1355 | **1800 107 715** (within Australia)

info@wildearth-travel.com | **wildearth-travel.com**

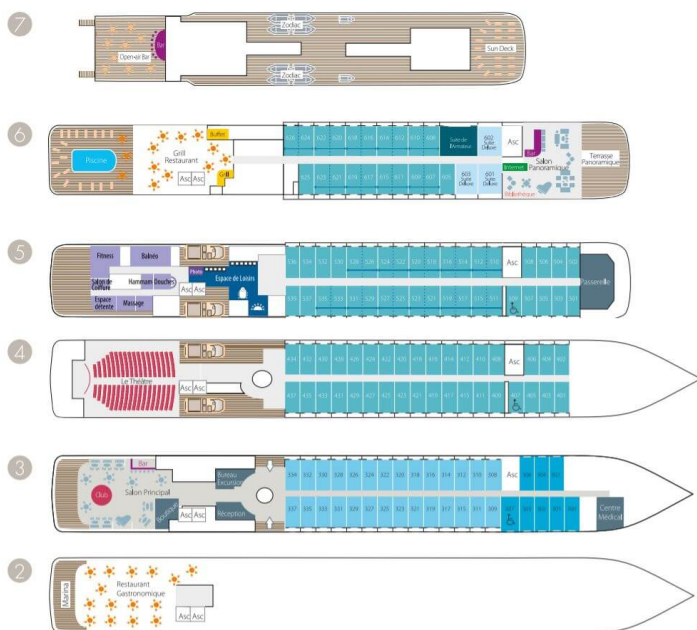
Wild Earth Travel

Small Ships, Big Adventures

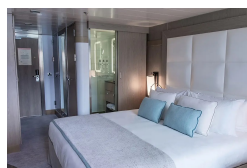
wildearth-travel.com

info@wildearth-travel.com

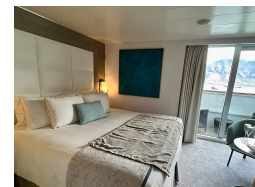
INSIDE YOUR SHIP



DeLuxe Stateroom



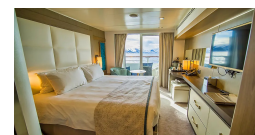
Deluxe Suite



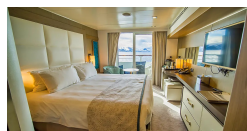
Owner's suite



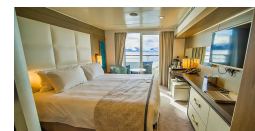
Prestige Stateroom - Deck 4



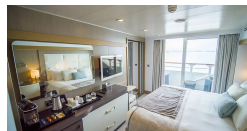
Prestige Stateroom - Deck 5



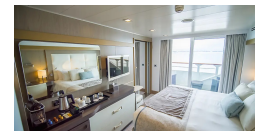
Prestige Stateroom - Deck 6



Prestige Suite - Deck 5



Prestige Suite - Deck 6



Wild Earth Travel

Small Ships, Big Adventures

wildearth-travel.com

info@wildearth-travel.com

PRICING

29-May-2025 to 05-Jun-2025

Superior Stateroom	6340 AUD pp
DeLuxe Stateroom	6850 AUD pp
Prestige Stateroom - Deck 4	7610 AUD pp
Prestige Stateroom - Deck 5	7980 AUD pp
Prestige Stateroom - Deck 6	8440 AUD pp
Deluxe Suite	11740 AUD pp
Prestige Suite - Deck 5	15880 AUD pp
Prestige Suite - Deck 6	16700 AUD pp
Owner's suite	24880 AUD pp

ADDITIONAL CHARGES:

Port Taxes 520 AUD pp

Wild Earth Travel

Small Ships, Big Adventures

0800 945 3327 (within New Zealand) | +64 (0) 3 365 1355 | **1800 107 715** (within Australia)

info@wildearth-travel.com | **wildearth-travel.com**



Wild Earth Travel

Small Ships, Big Adventures



wildearth-travel.com

info@wildearth-travel.com

SPECIAL OFFERS

Online prices reflect the current brochure fare savings of up to 30%. Prices may change based on demand. Terms and conditions apply. This special offer is subject to availability. Please contact us for more details.



Wild Earth Travel

Small Ships, Big Adventures

0800 945 3327 (within New Zealand) | +64 (0) 3 365 1355 | **1800 107 715** (within Australia)

info@wildearth-travel.com | **wildearth-travel.com**