

Wild Earth Travel

Small Ships, Big Adventures

wildearth-travel.com

info@wildearth-travel.com

FROM THE ARCTIC CIRCLE TO THE SCOTTISH ISLES LUXURY CRUISE

From Tromsø, the gateway to the Arctic, to the wild landscapes of Scotland, this journey will take shape along magical fjords, jagged cliffs and windswept moors. In the north, the Lofoten Islands reveal their spectacular scenery, their colourful villages and steel-coloured waters. Further south, the Norwegian shores unveil their raw nature, punctuated by forests, fjords sheltering ancient glaciers and cities steeped in history. Next are the Orkney and Skye archipelagos, these Celtic lands with their strong insular character, before you head for Scotland's western coast, with its mysterious lochs and misty mountains.



ITINERARY

Day 1 - Tromsø

In the north of the Arctic circle you'll discover Tromsø, a secluded town located in the county of Troms. Norwegians call it the "Paris of the north". You'll soon see why when you discover its extensive neoclassical architectural heritage. A stunning example is the Arctic cathedral, a major monument whose stylistic purity echoes the outline of the mountains surrounding the town.

Day 2 - Svolvær, Lofoten

Located on the island of Austvågøy, in the county of Nordland, Svolvær will be your ideal entry point for discovering the Lofoten islands. An important stopover to the north of Norway, fishing is one of the town's main features. And

Wild Earth Travel

Small Ships, Big Adventures

0800 945 3327 (within New Zealand) | +64 (0) 3 365 1355 | **1800 107 715** (within Australia)

info@wildearth-travel.com | **wildearth-travel.com**

Wild Earth Travel

Small Ships, Big Adventures



wildearth-travel.com

info@wildearth-travel.com

its speciality is? Cod. A picturesque white Lutheran church rests atop a hillside ridge, overlooking the town's multi-coloured houses. Still higher, the "The Solvaer Goat" mountain looks over the town from its rocky heights. Topped with two peaks like the horns of an animal, it is one of the region's must-see natural attractions.

Day 3 - At sea

During your journey at sea, make the most of the many services and activities on board. Treat yourself to a moment of relaxation in the spa or stay in shape in the fitness centre. Depending on the season, let yourself be tempted by the swimming pool or a spot of sunbathing. This journey without a port of call will also be an opportunity to enjoy the conferences or shows proposed on board, depending on the activities offered, or to do some shopping in the boutique or to meet the PONANT photographers in their dedicated space. As for lovers of the open sea, they will be able to visit the ship's upper deck to admire the spectacle of the waves and perhaps be lucky enough to observe marine species. A truly enchanted interlude, combining comfort, rest and entertainment.

Day 4 - Trondheim

Nestling at the end of the sumptuous Trondheimsfjord, at the mouth of the River Nidelva, and surrounded by green valleys, the mediaeval city of Trondheim will not fail to amaze you. You will be captivated by the natural and cultural riches offered by Norway's third city, which was founded by the Viking King Olaf I in the 10th century. As you stroll the cobbled streets of its old town, you will discover atypical architecture. An example is its emblematic Nidaros Cathedral, an architectural jewel of the 11th century and an interesting blend of Gothic and Roman influences.

Day 5 - Ålesund

Surrounded by a multitude of islands, fjords and majestic mountains, the town of Ålesund surprises many visitors. In fact, it is internationally renowned for its Art nouveau architecture. After the terrible fire of 1904 which reduced a large part of the town to ashes, Norwegian architects inspired by the Art nouveau style contributed to its reconstruction, with a very picturesque result. Not far from Ålesund, you will also discover Giske, the native island of Rollon, the great Viking leader who commanded the Norse expeditions to Normandy, or

the beautiful island of Godøy and the village of Alnes, which offers a grandiose panorama over the Atlantic Ocean and the surrounding islands.

Day 6 - Olden

With its two wooden churches, one red and the other white, plus its breathtaking view of the mouth of the river Oldeelva, Olden looks just like a picture post card. Located a few kilometres from the Jostedalsgreen park, home to one of the last glacier polar icecaps, this little village is a definite must for exploring the blue languages of the Briksdal or Kjennalen glaciers. Make sure you find some time to visit the Norwegian Glacier Museum. Absolutely amazing. Another gem is lake Lovatn and its turquoise waters inviting you to quiet contemplation.

Day 7 - At sea

During your journey at sea, make the most of the many services and activities on board. Treat yourself to a moment of relaxation in the spa or stay in shape in the fitness centre. Depending on the season, let yourself be tempted by the swimming pool or a spot of sunbathing. This journey without a port of call will also be an opportunity to enjoy the conferences or shows proposed on board, depending on the activities offered, or to do some shopping in the boutique or to meet the PONANT photographers in their dedicated space. As for lovers of the open sea, they will be able to visit the ship's upper deck to admire the spectacle of the waves and perhaps be lucky enough to observe marine species. A truly enchanted interlude, combining comfort, rest and entertainment.

Day 8 - Kirkwall, Scotland

Capital of the Orkney archipelago, Kirkwall, which means "church bay", is an ideal stopover before continuing on to the Northern Isles. Sheltered in a wide bay, the lively town welcomes the visitor with its charming paved alleyways edged by old houses and craft shops. Tankerness House, the oldest homestead in the town, is a must-see landmark. But the true architectural treasure of the aptly named Kirkwall is none other than its remarkable red and gold stone cathedral. And because whisky is inseparable from Scotland's identity, stop at the Highland Park Distillery for a highly instructive visit.

Day 9 - Portree, Isle of Skye

Wild Earth Travel

Small Ships, Big Adventures

0800 945 3327 (within New Zealand) | +64 (0) 3 365 1355 | **1800 107 715** (within Australia)

info@wildearth-travel.com | **wildearth-travel.com**

Wild Earth Travel

Small Ships, Big Adventures

wildearth-travel.com

info@wildearth-travel.com

Nestling in the crux of a gorgeous bay, Portree reflects the magnificence of the grandiose Isle of Skye as well as being its main town. Apart from the charm of its colourful houses, the town's outstanding location on the banks of a loch makes it a very pleasant place to be. From its colourful harbour bustling with local craftsmen's shops, you can take in a stunning view of the surrounding hills. Before trekking through the wilderness and drinking in the natural beauty of the Isle of Skye, check out some of the beautiful images in the Aros Centre.

Day 10 - Oban, Scotland

Oban is on the west coast of Scotland, opposite the Isle of Mull. It is the capital of the county of Argyll, a rural region of the Highlands considered to be the cradle of Scotland. Coming from Ireland, the Gaels settled here, bringing their language and culture. From "the Little Bay", its name in Scottish Gaelic, you will arrive in Kilmartin Glen, the site renowned for having the largest concentration of Neolithic and Bronze Age remains in Scotland. Among this spectacular site's 350 ancient monuments, you will discover standing stones, alignments of cairns and stone circles. Glen Coe Valley will then reveal its dramatic landscapes, shaped by volcanic activity. This valley, one of the wildest in Scotland, has been used as a location for the series Outlander. The discovery of the region will end with a visit to a whisky distillery, a unique opportunity to taste an exceptional product.

Day 11 - Glasgow

In the heart of the Clyde Valley, the bustling city of Glasgow contrasts starkly with the wild beauty of the surrounding countryside. Scotland's biggest city overflows with landmarks from its extensive artistic heritage and outstanding architectural tradition. The city's chequerboard layout makes walking through the major pedestrian thoroughfares easy: go with the flow and let the lively street atmosphere take you past the many Victorian monuments. Don't miss the collections on display in the numerous museums and art galleries. The Kelvingrove Art Gallery and Museum is an outstanding example.

Please note:

Itineraries are subject to change.

Wild Earth Travel

Small Ships, Big Adventures

0800 945 3327 (within New Zealand) | +64 (0) 3 365 1355 | **1800 107 715** (within Australia)

info@wildearth-travel.com | **wildearth-travel.com**

Wild Earth Travel

Small Ships, Big Adventures

wildearth-travel.com

info@wildearth-travel.com

YOUR SHIP: LE CHAMPLAIN

YOUR SHIP:	Le Champlain
VESSEL TYPE:	Luxury
LENGTH:	127 metres
PASSENGER CAPACITY:	92 cabins
BUILT/REFURBISHED:	2017/2018

Featuring innovative and environmentally-friendly equipment, elegantly designed cabins, spacious suites with large windows, and lounge areas that open onto the outside, this new limited-capacity yacht boasting just 92 cabins and suites will offer you a truly unique cruising experience.

As the first ship in a new series, Le Champlain will embody the unique atmosphere that is the cruise line's hallmark: a subtle blend of refinement, intimacy and comfort.

Aboard this ship that flies the French flag, you will experience the incomparable pleasure of an intimate cruise, with the possibility of exploring an ever-increasing range of destinations in an ethnic-chic ambiance with luxury service.

Experience a luxurious setting where the accent is on authenticity and passion for travel.

RESTAURANTS

As it is an essential part of French culture, gastronomy will naturally have pride of place aboard this new ship. Through its two restaurants, Le Champlain will invite you on a journey to elegance and epicureanism.

In a relaxed atmosphere, a first dining area located on Deck 3 and able to seat 70 will serve grilled meats daily, along with a

variety of salads and desserts.

To the back of Deck 4, you will find a 260 m² panoramic restaurant which can accommodate all of our passengers in a single sitting. Designed differently to that on our other ships, this dining area, which opens onto the outside, will have a buffet of salads, desserts and cheeses at your disposal. Our discreet and attentive crew will provide table service for hot meals.

PUBLIC AREAS

Like Le Boreal and its sisterships, Le Champlain has many common areas that are designed and equipped to meet all of your needs while preserving the intimacy of each passenger.

A 140 m² reception area includes: A reception/concierge desk, An excursions desk, The ship's administrative services, The sales office, manned by our Guest Relations Officer, Our 50 m² boutique which sells clothing, jewellery, beauty products, postcards and various accessories, Toilets accessible to passengers with reduced mobility.

A new hydraulic platform with adjustable height provides: Easier boarding than on any other cruise ship, Easier Zodiac embarkation and disembarkation for expeditions, Easier access to the sea for swimming and practising various water sports such as kayaking or paddle-boarding.

A pool deck offering: A pool with a panoramic view, equipped with a counter-current swimming system, A pleasant solarium, An outdoor bar and lounge with armchairs and sofas.

A 200 m² main lounge which can accommodate all of our passengers to share convivial moments and to host activities organised during the day or evening.

Lastly, a theatre that seats 188, equipped with: The latest

Wild Earth Travel

Small Ships, Big Adventures

0800 945 3327 (within New Zealand) | +64 (0) 3 365 1355 | **1800 107 715** (within Australia)

info@wildearth-travel.com | wildearth-travel.com

Wild Earth Travel

Small Ships, Big Adventures



wildearth-travel.com

info@wildearth-travel.com

sound and lighting technology, A LED wall as the stage backdrop, for the projection of high-resolution images and videos.



and videos.

Wild Earth Travel

Small Ships, Big Adventures

0800 945 3327 (within New Zealand) | +64 (0) 3 365 1355 | **1800 107 715** (within Australia)

info@wildearth-travel.com | **wildearth-travel.com**

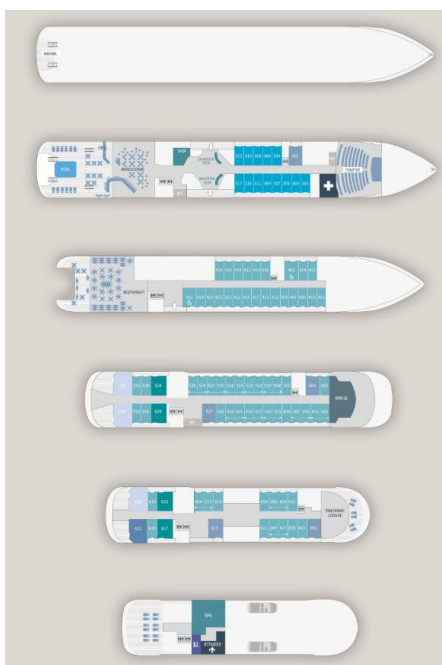
Wild Earth Travel

Small Ships, Big Adventures

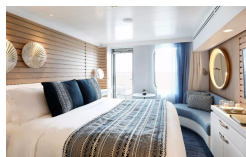
wildearth-travel.com

info@wildearth-travel.com

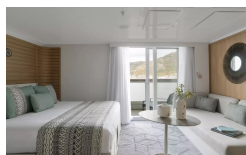
INSIDE YOUR SHIP



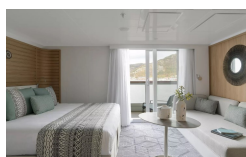
Deluxe Stateroom



Deluxe Suite Deck 4



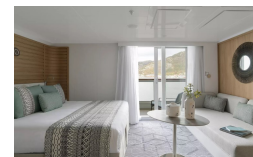
Deluxe Suite Deck 6



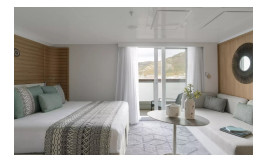
Grand Deluxe Suite Deck 6



Deluxe Suite Deck 3



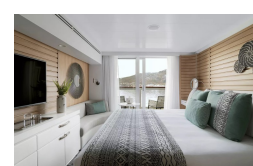
Deluxe Suite Deck 5



Grand Deluxe Suite Deck 5



Prestige Deck 4



Wild Earth Travel
Small Ships, Big Adventures

0800 945 3327 (within New Zealand) | +64 (0) 3 365 1355 | 1800 107 715 (within Australia)

info@wildearth-travel.com | wildearth-travel.com

Wild Earth Travel

Small Ships, Big Adventures

wildearth-travel.com

info@wildearth-travel.com

PRICING

03-Apr-2027 to 13-Apr-2027

Deluxe Stateroom	13560 AUD pp
Prestige Deck 4	14190 AUD pp
Prestige Deck 5	14570 AUD pp
Prestige Deck 6	15080 AUD pp
Deluxe Suite Deck 3	19740 AUD pp
Deluxe Suite Deck 4	19740 AUD pp
Deluxe Suite Deck 5	19740 AUD pp
Deluxe Suite Deck 6	19740 AUD pp
Prestige Deck 5 Suite	21130 AUD pp
Prestige Deck 6 Suite	21760 AUD pp
Privilege Suite Deck 5	22270 AUD pp
Privilege Suite Deck 6	22270 AUD pp
Grand Deluxe Suite Deck 5	22900 AUD pp
Grand Deluxe Suite Deck 6	22900 AUD pp

Wild Earth Travel

Small Ships, Big Adventures

0800 945 3327 (within New Zealand) | +64 (0) 3 365 1355 | **1800 107 715** (within Australia)

info@wildearth-travel.com | **wildearth-travel.com**



Wild Earth Travel

Small Ships, Big Adventures



wildearth-travel.com

info@wildearth-travel.com

SPECIAL OFFER

Online prices reflect the current brochure fare savings of up to 30%. Prices may change based on demand. Terms and conditions apply. This special offer is subject to availability. Please contact us for more details.



Wild Earth Travel

Small Ships, Big Adventures

0800 945 3327 (within New Zealand) | +64 (0) 3 365 1355 | **1800 107 715** (within Australia)

info@wildearth-travel.com | **wildearth-travel.com**