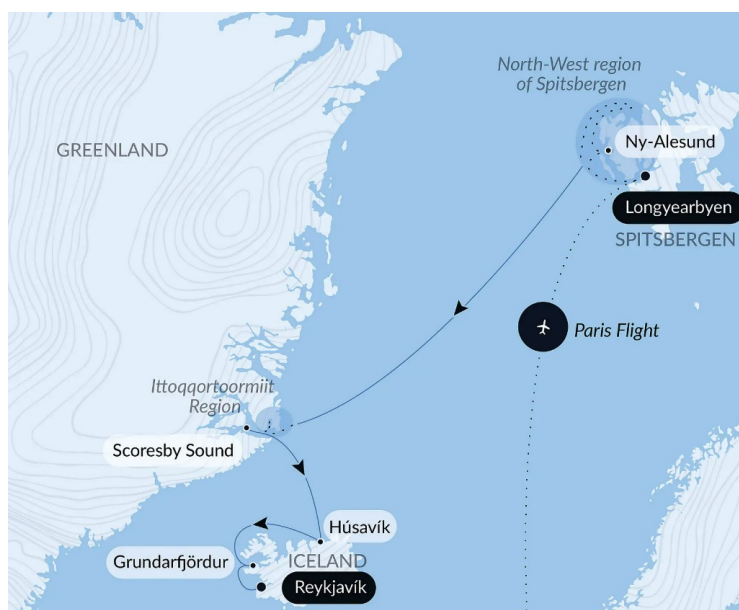




FROM SVALBARD TO ICELAND: A POLAR ODYSSEY

Beyond the Arctic Circle, set off to explore the islands of the Far North, from Spitsbergen to Iceland, via the east coast of Greenland. In this polar kingdom with its spectacular geology, you will discover majestic fjords - including Scoresby Sound, the world's largest network of fjords -, vertiginous snow-capped peaks, gigantic icebergs, ancient glaciers and infinite tundra sheltering remarkable wild fauna that you will certainly be lucky enough to observe. During your journey, you will also dive into the passionate history of these lands lying at the end of the world and set off to encounter local communities, the guardians of these untamed spaces.



ITINERARY

Day 1 - Longyearbyen, Spitsbergen

Longyearbyen is the capital of the Norwegian Svalbard archipelago, located on Svalbard's main island, and is the northernmost territorial capital on the planet. With winter temperatures dropping to below 40°C, the landscapes of this mining town are simply breathtaking. The glaciers, the mountains stretching as far as the eye can see and the untouched nature, make you feel like you're in completely unexplored territory.

Day 2 - North-West region of Spitsbergen

A kingdom of contrasts and natural marvels dotted with islands and peninsulas, northwest Spitsbergen fascinates with its preserved beauty. On



Wild Earth Travel

Small Ships, Big Adventures

wildearth-travel.com

info@wildearth-travel.com

these pristine lands, infinity unveils itself, treating the eyes to beauty sculpted by nature and enhanced by the changing light. The fjords bathed by icy waters, the jagged mountains and the imposing glaciers stand majestically before you, like monumental sculptures. In these lands, where souls are filled with deep serenity, only the murmur of broken ice, bearing mysteries and legends, disturbs the calmness. Aboard our Zodiacs and in the company of naturalist-guides, get as close as possible to this unique fauna and discover this centre for scientific expedition departures. In the distance, majestic whales glide silently through the glacial waters, whereas seals, walrus and Arctic foxes add a playful touch of life. As Svalbard reindeer wander the vast expanses, Arctic terns liven up the polar sky with their gracious flight and polar bears, which you may be lucky enough to see, patrol magnificently along the icy shores.

Day 2 - Ny-Alesund

During your cruise, discover Ny-Ålesund, a former mining town that has been transformed into a scientific base. Founded in 1916, this small town was the departure point for many Arctic expeditions, including those of the famous explorer Roald Amundsen. Don't miss a visit to the museum and its famous post office, considered to be the most northerly in the world!

Days 3 - 6 North-West region of Spitsbergen

A kingdom of contrasts and natural marvels dotted with islands and peninsulas, northwest Spitsbergen fascinates with its preserved beauty. On these pristine lands, infinity unveils itself, treating the eyes to beauty sculpted by nature and enhanced by the changing light. The fjords bathed by icy waters, the jagged mountains and the imposing glaciers stand majestically before you, like monumental sculptures. In these lands, where souls are filled with deep serenity, only the murmur of broken ice, bearing mysteries and legends, disturbs the calmness. Aboard our Zodiacs and in the company of naturalist-guides, get as close as possible to this unique fauna and discover this centre for scientific expedition departures. In the distance, majestic whales glide silently through the glacial waters, whereas seals, walrus and Arctic foxes add a playful touch of life. As Svalbard reindeer wander the vast expanses, Arctic terns liven up the polar sky with their gracious flight and polar bears, which you may be lucky enough to see, patrol magnificently along the icy shores.

Days 7 - 8 At sea

During your journey at sea, make the most of the many services and activities on board. Treat yourself to a moment of relaxation in the spa or stay in shape in the fitness centre. Depending on the season, let yourself be tempted by the swimming pool or a spot of sunbathing. This journey without a port of call will also be an opportunity to enjoy the conferences or shows proposed on board, depending on the activities offered, or to do some shopping in the boutique or to meet the PONANT photographers in their dedicated space. As for lovers of the open sea, they will be able to visit the ship's upper deck to admire the spectacle of the waves and perhaps be lucky enough to observe marine species. A truly enchanted interlude, combining comfort, rest and entertainment.

Day 9 - Ittoqqortoormiit Region

On the East coast of Greenland, in the Ittoqqortoormiit region, you will have the rare opportunity of immersing yourself in the heart of isolated scenery and exploring the beauty of its landscapes. The high alpine mountains stand out in the sky, revealing dark rock edges. The region is home to the longest fjord system in the world, Scoresby Sound. On the edge of the fjord, the eponymous village is considered one of the most remote inhabited places in the world. The colourful houses, so typical of Greenland, dot the landscape with small red, yellow and blue patches that stand out against the surrounding arid landscape. Immersing yourself in this region will allow you to discover the ancestral way of life of the last hunters of the polar region. This will be a veritable deep-dive into the lives of the Arctic's inhabitants.

Day 10 - Scoresby Sound

Covering an area of 13,700 km² (5,290 mi²), Scoresby Sound is the largest and deepest fjord system in the world. Named after the explorer and whale hunter William Scoresby, who mapped the region in 1822, it opens onto the Greenland Sea to the north of the Blosseville Coast. This wild and desert region offers untouched panoramas of infinite beauty, with high snow-capped peaks rising tall alongside icebergs immersed in clear, blue-tinged waters. Discovering these stunning places in the wake of great explorers like Captain Charcot, who was deeply attached to the land of the Inuit, inspires a profound reverence.

Day 11 - At sea

Wild Earth Travel

Small Ships, Big Adventures

0800 945 3327 (within New Zealand) | +64 (0) 3 365 1355 | **1800 107 715** (within Australia)

info@wildearth-travel.com | **wildearth-travel.com**



Wild Earth Travel

Small Ships, Big Adventures

wildearth-travel.com

info@wildearth-travel.com

During your journey at sea, make the most of the many services and activities on board. Treat yourself to a moment of relaxation in the spa or stay in shape in the fitness centre. Depending on the season, let yourself be tempted by the swimming pool or a spot of sunbathing. This journey without a port of call will also be an opportunity to enjoy the conferences or shows proposed on board, depending on the activities offered, or to do some shopping in the boutique or to meet the PONANT photographers in their dedicated space. As for lovers of the open sea, they will be able to visit the ship's upper deck to admire the spectacle of the waves and perhaps be lucky enough to observe marine species. A truly enchanted interlude, combining comfort, rest and entertainment.

Day 12 - Húsavík

According to the Landnamabok, a manuscript describing the discovery of Iceland by the Scandinavians in the 9th and 10th centuries, Húsavík is the site of the first Nordic settlement in Iceland. This small fishing port very close to the Arctic Circle is known for being the place where there is the highest chance of spotting whales. A museum is even dedicated to them. The small town is also the ideal departure point for discovering Ásbyrgi Canyon, a geological treasure that is the subject of Nordic legends. The horseshoe-shaped canyon is divided in two by a huge rock formation called Eyjan (island in Icelandic). Covered in trees, the canyon is said to have appeared when Sleipnir, the god Odin's horse, set one of his eight hooves down on the ground.

Day 13 - Grundarfjörður

This secret boreal hideaway is located at the foot of the Kirkjufell, on Snaefellsnes peninsula. Arriving by boat means you will get a closer view of the lava-stone rock standing like a sentinel at the entrance to the bay; Grundarfjörður lies sheltered behind this cone-shaped rock. A stone's throw from the jetty, crystal clear waters, tundra and beaches give onto the cerulean waters of Breiðafjörður. Scattered with its emerald-coloured lawns, this town, with its buildings that merge into the surrounding countryside, will most certainly win your favour.

Day 14 - Reykjavík

Iceland's capital stretches along the edge of a vast bay in the west of the country. Perlan, the "Pearl of Reykjavík", a museum located on 'Oskjuhlíð hill, offers a panoramic view of the lush, green landscapes. A little further, one can easily spot the signpost showing the way to the evangelical Hallgrímskirkja church, and to the historical centre where one can stroll along the Skólavörðustígur and the Laugavegur, two lively streets with charming small shops. For some relaxation just outside of the city, visitors have the opportunity to visit the Reykjanes peninsula and its famous thermal lagoons of the Blue Lagoon.

Please note:

Itineraries are subject to change.

Wild Earth Travel
Small Ships, Big Adventures

0800 945 3327 (within New Zealand) | +64 (0) 3 365 1355 | **1800 107 715** (within Australia)

info@wildearth-travel.com | wildearth-travel.com

Wild Earth Travel

Small Ships, Big Adventures

wildearth-travel.com

info@wildearth-travel.com

YOUR SHIP: LE LYRIAL

YOUR SHIP:	Le Lyrial
VESSEL TYPE:	Luxury Small Ship
LENGTH:	142 metres
PASSENGER CAPACITY:	224
BUILT/REFURBISHED:	



ide spirit.

Launched: 2015

A sleek silhouette, a welcoming intimate atmosphere, discover aboard this new ship the philosophy that has made our sisterships such a success: the spirit of Yacht Cruises.

Sailing under the French flag, this magnificent yacht of only 122 staterooms and Suites, with balconies, will join our fleet in April 2015. You will be enchanted by the contemporary decor inspired by the our destinations and the blue light of the Vega star in the Lyra constellation. The result is a subtle variation around a palette of blues, ranging from the luminous delicate grey-blue of the Polar ice to splashes of the vivid turquoise blue found in Mediterranean coves

A refined ambiance is enhanced by the quality of the workmanship and materials: white Corian counters in the lobby contrast with the warmth of leather to recall a boat's hull, while the central sculpture of enamelled pieces takes its inspiration from the sea. In the loungebar, the carpet picks up a tennis stripe theme symbolising a certain idea of cruising, one synonymous with French elegance and a chic seaside spirit.

Wild Earth Travel

Small Ships, Big Adventures

0800 945 3327 (within New Zealand) | +64 (0) 3 365 1355 | **1800 107 715** (within Australia)

info@wildearth-travel.com | **wildearth-travel.com**

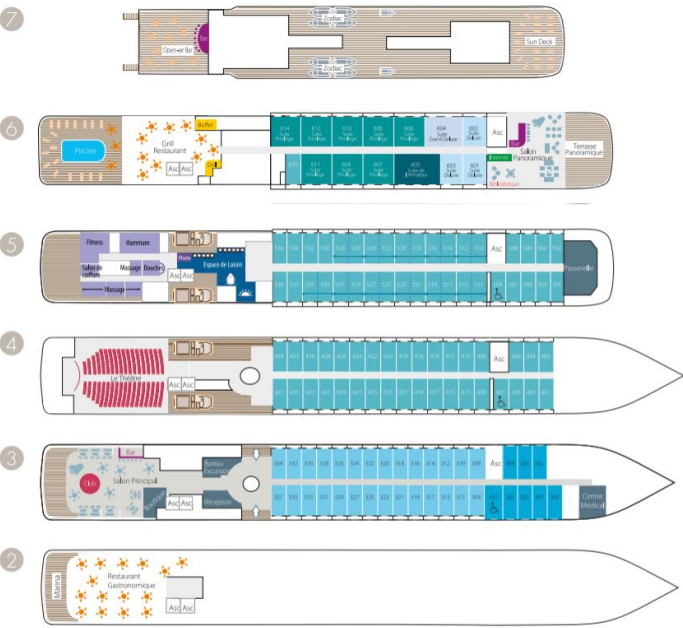


Wild Earth Travel
Small Ships, Big Adventures

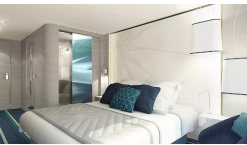
wildearth-travel.com

info@wildearth-travel.com

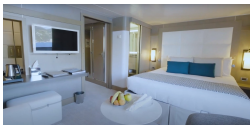
INSIDE YOUR SHIP



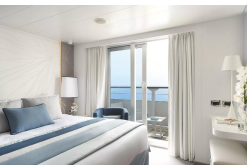
Deluxe Stateroom



Deluxe Suite



Grand Deluxe Suite



Grand Privilege Suite



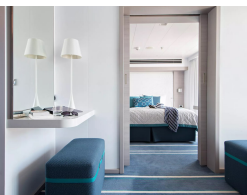
Prestige Deck 4



Prestige Deck 5



Prestige Deck 5 Suite



Prestige Deck 6



Wild Earth Travel
Small Ships, Big Adventures

0800 945 3327 (within New Zealand) | +64 (0) 3 365 1355 | **1800 107 715** (within Australia)

info@wildearth-travel.com | wildearth-travel.com



Wild Earth Travel
Small Ships, Big Adventures

wildearth-travel.com

info@wildearth-travel.com

PRICING

07-Aug-2027 to 20-Aug-2027

Superior Stateroom	15980 AUD pp
Deluxe Stateroom	17190 AUD pp
Prestige Deck 4	18910 AUD pp
Prestige Deck 5	19760 AUD pp
Prestige Deck 6	20790 AUD pp
Deluxe Suite	28360 AUD pp
Prestige Deck 5 Suite	37820 AUD pp
Privilège Suite	39700 AUD pp
Grand Deluxe Suite	45380 AUD pp
Grand Privilege Suite	53450 AUD pp

Wild Earth Travel
Small Ships, Big Adventures

0800 945 3327 (within New Zealand) | +64 (0) 3 365 1355 | **1800 107 715** (within Australia)

info@wildearth-travel.com | wildearth-travel.com



Wild Earth Travel
Small Ships, Big Adventures

wildearth-travel.com

info@wildearth-travel.com

SPECIAL OFFER

Online prices reflect the current brochure fare savings of up to 30%. Prices may change based on demand. Terms and conditions apply. This special offer is subject to availability. Please contact us for more details.

Wild Earth Travel
Small Ships, Big Adventures

0800 945 3327 (within New Zealand) | +64 (0) 3 365 1355 | **1800 107 715** (within Australia)

info@wildearth-travel.com | **wildearth-travel.com**