

Wild Earth Travel

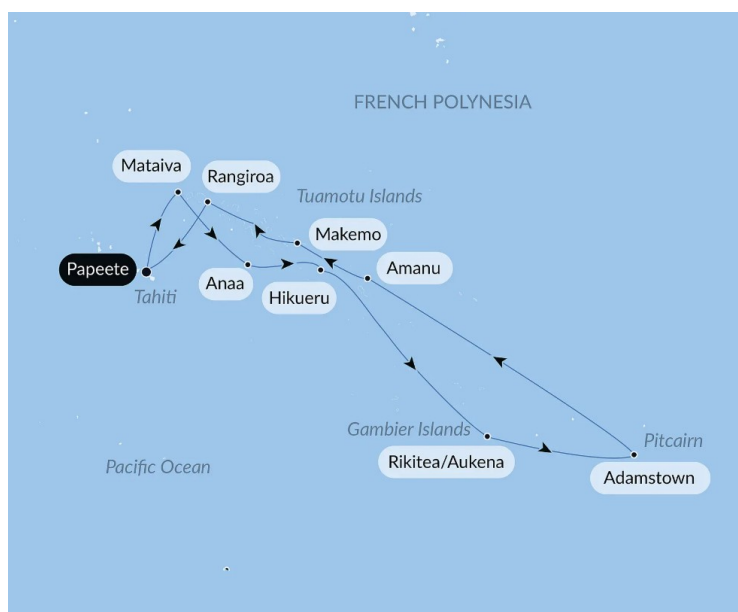
Small Ships, Big Adventures

wildearth-travel.com

info@wildearth-travel.com

FROM FRENCH POLYNESIA TO PITCAIRN ISLAND LUXURY CRUISE

Set off a unique odyssey into the heart of the Pacific Ocean, an intimate adventure discovering pristine French Polynesian archipelagos from Tuamotu and the Gambier Islands to mythical Pitcairn Island. Mataiva, Anaa, Hikueru, Rikitea, Aukena ... These intact islands are scattered like precious pearls throughout your journey, offering a breathtaking natural show that features mysterious atolls, turquoise lagoons, immaculate beaches, and extraordinarily rich coral reefs. In addition to the splendid scenery, each port of call will invite you to discover ancestral practices, local cultures, exhilarating dances and songs plunging the visitor into the profound Polynesian soul via activities co-constructed with local players.



ITINERARY

Day 1 - Papeete, Tahiti Island

Capital of French Polynesia, the city of Papeete is on the north-west coast of the island of Tahiti. You'll find a relaxed atmosphere here, where urban buzz combines with the legendary laid-back Polynesian lifestyle. Culture is not lacking. You can enjoy sites narrating the history of the archipelago, including the colonial cathedral and the Maison de la reine Marau. The Vaipahi public gardens will win you over by their abundant plant-life. The large municipal market offers local specialities: fresh fruit, spices and all kinds of fish abound on their stalls.

Day 2 - Mataiva, Tuamotu Islands

Wild Earth Travel

Small Ships, Big Adventures

0800 945 3327 (within New Zealand) | +64 (0) 3 365 1355 | **1800 107 715** (within Australia)

info@wildearth-travel.com | wildearth-travel.com

Wild Earth Travel

Small Ships, Big Adventures



wildearth-travel.com

info@wildearth-travel.com

Situated in the Tuamotu Archipelago, 39 km west of Tikehau, the closest atoll, and 300 km north of Tahiti, Mataiva is the archipelago's westernmost atoll. It is the only lagoon in French Polynesia to have dozens of pools within it, reaching depths of around 8 metres, and 9 narrow passages that inspired the name of the island, since Mataiva means "nine eyes". You will love swimming, snorkelling or diving in its stunning lagoon, a natural tropical aquarium home to myriad fish.

Day 3 - Anaa, Tuamotu Islands

All the beauty of Polynesia is concentrated in Anaa Atoll, somewhere in the waters of the Pacific. Here, the most beautiful shades of blue and green are on display to create a heavenly setting. For the inhabitants of the Tuamotu archipelago, Anaa Atoll is intrinsically associated with the raids conducted by the so-called Parata warriors of old. In 1983, the island was completely destroyed by a cyclone that left behind only the Saint-Etienne de Tematahoa church, which remains standing elegantly on the edge of the beach to this day, against a backdrop of coconut trees. Featuring moments of relaxation and a dive into the history of Polynesia, the stop at Anaa promises to be unforgettable.

Day 4 - Hikueru

An isolated atoll in the Tuamotus, Hikueru's charm stems from the beauty of its landscapes and the authenticity of its inhabitants. Its crystal-clear lagoon, bordered by beaches of white sand and coral reefs, offers ideal conditions for scuba diving and snorkelling. On land, Polynesian songs, dances and handicrafts set the rhythm of daily life. Facing a calm horizon, explore the island at leisure, from a dugout canoe or by following the many paths.

Day 5 - At sea

During your journey at sea, make the most of the many services and activities on board. Treat yourself to a moment of relaxation in the spa or stay in shape in the fitness centre. Depending on the season, let yourself be tempted by the swimming pool or a spot of sunbathing. This journey without a port of call will also be an opportunity to enjoy the conferences or shows proposed on board, depending on the activities offered, or to do some shopping in the boutique or to meet the PONANT photographers in their dedicated space. As for lovers of

the open sea, they will be able to visit the ship's upper deck to admire the spectacle of the waves and perhaps be lucky enough to observe marine species. A truly enchanted interlude, combining comfort, rest and entertainment.

Day 6 - Rikitea, Gambier Islands

Discover Mangareva, which means "floating mountain" in Polynesian. Located in the Gambier Islands, surrounded by a magnificent coral reef and blessed with generous vegetation, this island, a cradle of Catholicism, has exceptional cultural heritage, with many vestiges of religious buildings dating from the 19th century. Nestling in the heart of this historic site with idyllic landscapes, do not miss the small village of Rikitea, where one of Polynesia's wonders, Saint Michael's Cathedral, stands proudly, entirely built from coral and timber.

Day 7 - Aukena, Gambier Islands

Located 5 kilometres southeast of Mangareva, Aukena is today the 4th-largest of the Gambier Islands in French Polynesia, with a population of around thirty inhabitants. This port of call will be an opportunity for you to dive into the past, to the era when Aukena was discovered by the sailor James Wilson in 1797. There are several remnants of this missionary period, such as the watchtower serving as a landmark on the southwest of the island or the Church of St. Raphael, constructed in 1839. These buildings nestling in the forest lead to sumptuous white sand beaches and turquoise waters. Take the time to explore this island in the Gambier archipelago, and get a taste of French Polynesia's gentle way of life.

Days 8 - 9 - Adamstown, Pitcairn Island

If you've got a taste for adventure and you love discovering wild, remote lands, you'll definitely be won over by the Pitcairn islands. This tiny British territory is mainly composed of atolls right in the middle of the Pacific Ocean. Rimmed by steep cliffs several hundreds of metres high, the volcanic Pitcairn Island is to be explored on foot. In Adamstown, the only village on this 5-square-kilometre land, you'll meet the 50 sole inhabitants of the entire archipelago. The call to Pitcairn is subject to weather and sea conditions.

Days 10 - 11 - At sea

Wild Earth Travel

Small Ships, Big Adventures

0800 945 3327 (within New Zealand) | +64 (0) 3 365 1355 | **1800 107 715** (within Australia)

info@wildearth-travel.com | **wildearth-travel.com**

Wild Earth Travel

Small Ships, Big Adventures

wildearth-travel.com

info@wildearth-travel.com

During your journey at sea, make the most of the many services and activities on board. Treat yourself to a moment of relaxation in the spa or stay in shape in the fitness centre. Depending on the season, let yourself be tempted by the swimming pool or a spot of sunbathing. This journey without a port of call will also be an opportunity to enjoy the conferences or shows proposed on board, depending on the activities offered, or to do some shopping in the boutique or to meet the PONANT photographers in their dedicated space. As for lovers of the open sea, they will be able to visit the ship's upper deck to admire the spectacle of the waves and perhaps be lucky enough to observe marine species. A truly enchanted interlude, combining comfort, rest and entertainment.

Day 12 - Amanu, Tuamotu Islands

An unspoiled paradise in the Tuamotu archipelago, Ikitake will delight lovers of nature and culture. This haven of peace offers an idyllic setting in which to recharge your batteries and fully enjoy the natural wonders of Polynesia: pristine beaches, turquoise waters, coral reefs, etc. You will have the opportunity to explore the treasures of Ikitake by snorkelling in its lagoon, scuba diving to come face-to-face with the marine life, or wandering along its secret paths... The island also offers a total immersion in Polynesian traditions, including dancing, singing and authentic encounters with the locals.

Day 13 - Makemo

Makemo is one of the wildest atolls in the Tuamotus. The island is home to the third largest lagoon in the archipelago. It is a haven of unspoiled nature with beaches of white sand and turquoise waters. It is particularly renowned for its pearl farms, producing a true Polynesian treasure, and for the production of copra, a raw material that is essential for coconut oil extraction. Discover Makemo's culture and traditions by visiting its village of 600 inhabitants and exploring the remains of ancient Polynesian villages that dot the island, offering a fascinating glimpse into the history of the region.

Day 14 - Rangiroa, Tuamotu Islands

A secluded atoll in the Tuamotu Archipelago, Rangiroa, meaning "vast sky" in Polynesian, is very aptly named. The lagoon of the largest atoll in Polynesia is

reminiscent of the heavens, imprisoned by hundreds of islets formed by sand that veers from immaculate white to pink. But the beauty of Rangiroa, classed by Captain Cousteau as one of the most beautiful diving spots in the world, is most evident in its underwater life: you will have the occasion of admiring all the richness of the site on a snorkeling tour or on a glass-bottom boat tour. Rangiroa is also the high seat of Polynesian pearl culture.

Day 15 - Papeete, Tahiti Island

Capital of French Polynesia, the city of Papeete is on the north-west coast of the island of Tahiti. You'll find a relaxed atmosphere here, where urban buzz combines with the legendary laid-back Polynesian lifestyle. Culture is not lacking. You can enjoy sites narrating the history of the archipelago, including the colonial cathedral and the Maison de la reine Marau. The Vaipahi public gardens will win you over by their abundant plant-life. The large municipal market offers local specialities: fresh fruit, spices and all kinds of fish abound on their stalls.

Please note:

Itineraries are subject to change.

Wild Earth Travel

Small Ships, Big Adventures

0800 945 3327 (within New Zealand) | +64 (0) 3 365 1355 | **1800 107 715** (within Australia)

info@wildearth-travel.com | wildearth-travel.com

Wild Earth Travel

Small Ships, Big Adventures



wildearth-travel.com

info@wildearth-travel.com

YOUR SHIP: LE JACQUES CARTIER

YOUR SHIP: Le Jacques Cartier

VESSEL TYPE: Luxury

LENGTH:

PASSENGER CAPACITY: 92 cabins

BUILT/REFURBISHED: 2018/2019

Featuring innovative and environmentally-friendly equipment, elegantly designed staterooms, spacious suites with large windows, and lounge areas that open onto the outside, this new limited-capacity yacht boasting just 92 staterooms and suites will offer you a truly unique cruising experience.

As the sixth ship in a new series that remains true to the Ponant spirit, Le Jacques Cartier will embody the unique atmosphere that is the cruise line's hallmark: a subtle blend of refinement, intimacy and comfort.

Aboard this ship that flies the French flag, you will experience the incomparable pleasure of an intimate cruise, with the possibility of exploring an ever-increasing range of destinations in an ethnic-chic ambiance with luxury service.

Experience a luxurious setting where the accent is on authenticity and passion for travel.

RESTAURANTS

As it is an essential part of French culture, gastronomy will naturally have pride of place aboard this new ship.

To the back of Deck 4, you will find a 260 m² panoramic restaurant which can accommodate all of our passengers in a single sitting. Designed differently to that on our other ships, this

dining area, which opens onto the outside, will have a buffet of salads, desserts and cheeses at your disposal. Our discreet and attentive crew will provide table service for hot meals.

In a relaxed atmosphere, an outdoor grill on Deck 3 will serve grilled meats with a variety of salads and desserts.

PUBLIC AREAS

Le Jacques Cartier has many common areas that are designed and equipped to meet all of your needs while preserving the intimacy of each passenger.

A 140 m² reception area includes:

A reception/concierge desk,

An excursions desk,

The ship's administrative services,

The sales office, manned by our Guest Relations Officer,

Our 50 m² boutique which sells clothing, jewellery, beauty products, postcards and various accessories,

Toilets accessible to passengers with reduced mobility.

A new hydraulic platform with adjustable height provides:

Easier boarding than on any other cruise ship,

Easier Zodiac embarkation and disembarkation for expeditions,

Easier access to the sea for swimming and practising various water sports such as kayaking or paddle-boarding.

A pool deck offering:

A pool with a panoramic view, equipped with a counter-current swimming system,

A pleasant solarium,

An outdoor bar and lounge with armchairs and sofas.

A 200 m² main lounge which can accommodate all of our passengers to share convivial moments and to host activities

Wild Earth Travel

Small Ships, Big Adventures

0800 945 3327 (within New Zealand) | +64 (0) 3 365 1355 | **1800 107 715** (within Australia)

info@wildearth-travel.com | wildearth-travel.com



Wild Earth Travel

Small Ships, Big Adventures



wildearth-travel.com

info@wildearth-travel.com

organised during the day or evening.

Lastly, a theatre that seats 188, equipped with:

The latest sound and lighting technology,

A LED wall as the stage backdrop, for the projection of high-resolution images and videos.



and videos.



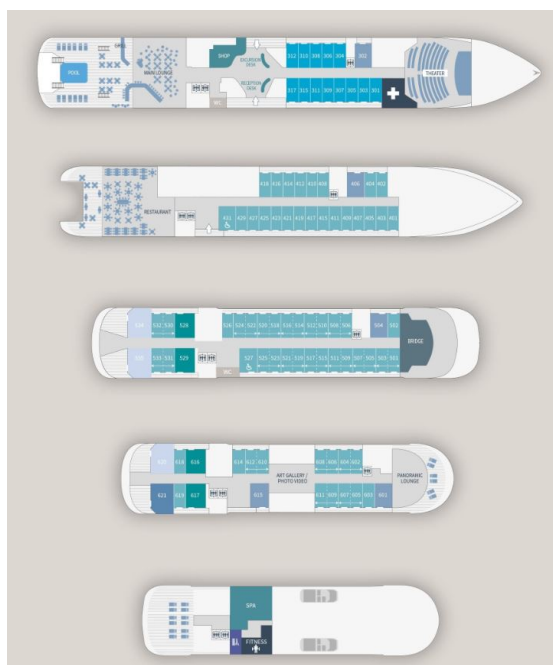
Wild Earth Travel

Small Ships, Big Adventures

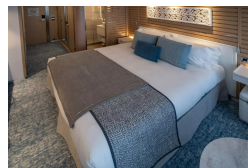
0800 945 3327 (within New Zealand) | +64 (0) 3 365 1355 | **1800 107 715** (within Australia)

info@wildearth-travel.com | **wildearth-travel.com**

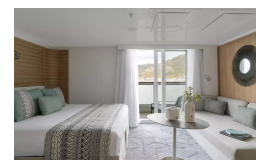
INSIDE YOUR SHIP



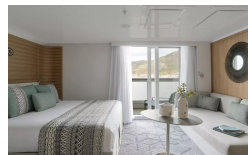
Deluxe Stateroom



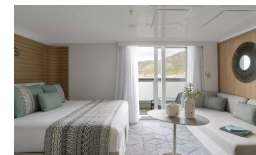
Deluxe Suite Deck 3



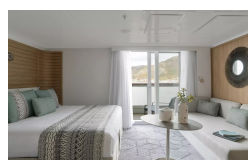
Deluxe Suite Deck 4



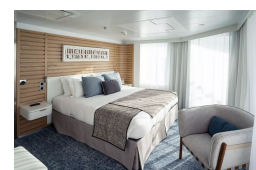
Deluxe Suite Deck 5



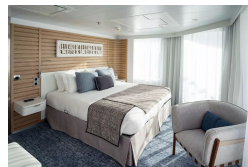
Deluxe Suite Deck 6



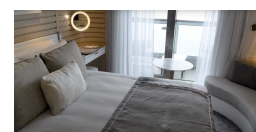
Grand Deluxe Suite Deck 5



Grand Deluxe Suite Deck 6



Prestige Deck 4





Wild Earth Travel

Small Ships, Big Adventures



wildearth-travel.com

info@wildearth-travel.com

PRICING

15-Nov-2026 to 29-Nov-2026

Deluxe Stateroom	14350 AUD pp
Prestige Deck 4	15920 AUD pp
Prestige Deck 5	16720 AUD pp
Prestige Deck 6	17660 AUD pp
Deluxe Suite Deck 5	24600 AUD pp
Deluxe Suite Deck 4	24600 AUD pp
Deluxe Suite Deck 6	24600 AUD pp
Deluxe Suite Deck 3	24600 AUD pp
Prestige Deck 5 Suite	33290 AUD pp
Prestige Deck 6 Suite	35020 AUD pp
Privilege Suite Deck 5	36760 AUD pp
Privilege Suite Deck 6	36760 AUD pp
Grand Deluxe Suite Deck 6	40380 AUD pp
Grand Deluxe Suite Deck 5	40380 AUD pp



Wild Earth Travel
Small Ships, Big Adventures

0800 945 3327 (within New Zealand) | +64 (0) 3 365 1355 | **1800 107 715** (within Australia)

info@wildearth-travel.com | **wildearth-travel.com**



Wild Earth Travel

Small Ships, Big Adventures



wildearth-travel.com

info@wildearth-travel.com

SPECIAL OFFERS

Online prices reflect the current brochure fare savings of up to 30%. Prices may change based on demand. Terms and conditions apply. This special offer is subject to availability. Please contact us for more details.

Wild Earth Travel

Small Ships, Big Adventures

0800 945 3327 (within New Zealand) | +64 (0) 3 365 1355 | **1800 107 715** (within Australia)

info@wildearth-travel.com | **wildearth-travel.com**