

Wild Earth Travel

Small Ships, Big Adventures

wildearth-travel.com

info@wildearth-travel.com

FROM FIJI TO MICRONESIA LUXURY SOUTH PACIFIC CRUISE

At the edge of the Pacific, time seems to be standing still. In Vanuatu, in the Solomon Islands and in Micronesia, ancestral cultures shape a magical universe on the water. Sail from island to island, marvelling at the power of these territories formed by the sea and fire, by song and dance, and share unique moments with the local communities. The immaculate beaches and crystal-clear lagoons reveal another spectacle: exceptional sea beds, sometimes hiding surprising vestiges, tragic witnesses of the conflicts that marked the region.



ITINERARY

Day 1 Lautoka, Viti Levu Island

Lautoka is the second largest city of Fiji. Located on the western side of the island of Viti Levu, 24 kilometres north of Nadi. Lying in the heart of Fiji's sugar cane growing region, it is known as the Sugar City. Lautoka is the gateway to Fiji's "Sun coast" a land of abundant sunshine, azure skies and dramatic grass-covered peaks chequered with sugar-cane fields, rural villages and quaint market towns.

Day 2 At sea

During your journey at sea, make the most of the many services and activities on board. Treat yourself to a moment of relaxation in the spa or stay in shape

Wild Earth Travel

Small Ships, Big Adventures

0800 945 3327 (within New Zealand) | +64 (0) 3 365 1355 | **1800 107 715** (within Australia)

info@wildearth-travel.com | **wildearth-travel.com**

Wild Earth Travel

Small Ships, Big Adventures



wildearth-travel.com

info@wildearth-travel.com

in the fitness centre. Depending on the season, let yourself be tempted by the swimming pool or a spot of sunbathing. This journey without a port of call will also be an opportunity to enjoy the conferences or shows proposed on board, depending on the activities offered, or to do some shopping in the boutique or to meet the PONANT photographers in their dedicated space. As for lovers of the open sea, they will be able to visit the ship's upper deck to admire the spectacle of the waves and perhaps be lucky enough to observe marine species. A truly enchanted interlude, combining comfort, rest and entertainment.

Day 3 Ambrym Island

The island of Ambrym in Vanuatu is often referred to as the "black" island due to its volcanic ash and because of its 'black magic' steeped in mystery. In the villages, the ancient customs play a significant part in day to day living. The "Man blong Majik" are treated with the utmost respect and practice sorcery and magic beyond all imaginings. Ambrym prides itself on some unique characteristics, such as the magnificent tam-tams (or slit gongs) sculpted out of tree trunks, sand-drawing, black-fern masks and local dances. The most striking custom dance is the Rom (or masked) dance - where 9 foot covertly cloaked and masked 'spirits' stomp out ancient rhythms to the beat of the tam tam.

Day 4 At sea

During your journey at sea, make the most of the many services and activities on board. Treat yourself to a moment of relaxation in the spa or stay in shape in the fitness centre. Depending on the season, let yourself be tempted by the swimming pool or a spot of sunbathing. This journey without a port of call will also be an opportunity to enjoy the conferences or shows proposed on board, depending on the activities offered, or to do some shopping in the boutique or to meet the PONANT photographers in their dedicated space. As for lovers of the open sea, they will be able to visit the ship's upper deck to admire the spectacle of the waves and perhaps be lucky enough to observe marine species. A truly enchanted interlude, combining comfort, rest and entertainment.

Day 5 Santa Ana Island

Owaraha (formerly Santa Ana) is located at the eastern end of Makira (San

Cristobal) and just north of the smaller Owariki (Santa Catalina). Our ship will navigate through the picturesque channel separating the Islands before dropping anchor just outside Port Mary. The islanders are well known for preserving ancient traditions and producing intricate wooden carvings. Their artefacts include magnificently carved fishing floats and ceremonial bowls intricately inlaid with shells. After a short zodiac ride ashore you will be guided through the village to an open area to witness a number of traditional performances. Afterwards experience life in a traditional Solomon Island village or take a swim in the warm tropical waters of Port Mary.

Day 6 Roderick Bay, Florida Islands

Part of the Florida Islands, Roderick bay is surrounded by beautiful white sand beaches and fringing coral reefs. These clear warm tropical waters give rise to a myriad of colourful corals only metres from the shore. To add to this stunning environment, nosed up onto a nearby beach, listing heavily to its starboard side is the wreck of the World Discoverer; an expedition cruise ship beached here in 2001 after striking a charted rock at the Northern entrance to Sandfly Passage. Venture ashore for a welcome ceremony, take a walk through the village or snorkel around the wreck to witness the marine environment attempting to reclaim this invader.

Day 7 Njari Island

There are plenty of opportunities for world class snorkelling, diving and underwater photography throughout the Solomon Islands with sites in the Western and Central Provinces considered among the most popular. The underwater realm is home to more than 1000 species of reef fish, along with dolphins, rays, sharks, and six of the world's seven species of marine turtles. Almost 500 species of corals have been identified amongst the 5,750km² of reefs found in the Solomon Islands. Njari Island is an uninhabited picture postcard island located 15nm from the town of Gizo. Enjoy swimming and snorkelling from its idyllic shores.

Day 8 Bougainville

The Autonomous Region of Bougainville, formerly known as the North Solomons Province, has been known for its picture-perfect beaches and bays since French explorer Louis-Antoine de Bougainville first sighted the island and gave it its name in 1768. The region played a significant role in the Pacific

Wild Earth Travel

Small Ships, Big Adventures

0800 945 3327 (within New Zealand) | +64 (0) 3 365 1355 | **1800 107 715** (within Australia)

info@wildearth-travel.com | **wildearth-travel.com**

Wild Earth Travel

Small Ships, Big Adventures



wildearth-travel.com

info@wildearth-travel.com

theatre of war during WWII. With 685 km of coastline and 240,000ha of coral reefs teeming with life there are many destinations awaiting discovery.

Day 9 Rabaul, Bismarck Archipelago

Set at the eastern end of the island of New Britain, the tropical port town of Rabaul has always been famous for its spectacular setting. Nestled beside Simpson Harbour, the township is surrounded by six volcanoes, one of which, Mt Tavurvur, is still active today. The most recent major volcanic eruption was in September 1994 when Tavurvur and Vulcan covered much of Rabaul and surrounding villages with volcanic ash. This eruption saw the growth of the nearby coastal town of Kokopo which has now become the administrative and tourism centre for Rabaul.

Join your expedition team for a tour by local transport to see Mt Tavurvur, the Volcano Observatory and various significant sites from World War II.

Days 10 - 11 At sea

During your journey at sea, make the most of the many services and activities on board. Treat yourself to a moment of relaxation in the spa or stay in shape in the fitness centre. Depending on the season, let yourself be tempted by the swimming pool or a spot of sunbathing. This journey without a port of call will also be an opportunity to enjoy the conferences or shows proposed on board, depending on the activities offered, or to do some shopping in the boutique or to meet the PONANT photographers in their dedicated space. As for lovers of the open sea, they will be able to visit the ship's upper deck to admire the spectacle of the waves and perhaps be lucky enough to observe marine species. A truly enchanted interlude, combining comfort, rest and entertainment.

Day 12 Chuuk (ex Truk)

Chuuk Lagoon, previously known as Truk Lagoon, is one of the four states of the Federated States of Micronesia. The 16 much-eroded volcanic islands within the lagoon have mangrove swamps along their coasts with rich rainforests in the central mountainous areas. The islands are hugely popular with scuba divers thanks to the incredibly interesting shipwrecks: at depths of 15 to 40 metres, divers can explore a veritable underwater museum of wrecks from the Japanese land-based, aerial and naval fleet bombarded by the Americans in February 1944 in retaliation for the attack on Pearl Harbour.

These shipwrecks have become foundations for new reef growth and extraordinary marine fauna.

Day 13 Pulap Island

Pulap is an atoll consisting of three islands located in the Pattiw group in the Caroline Islands. The three islands are, Pollap in the north, Tamatam in the south, and Fanadik at the western fringe of the reef. The island is surrounded by a number of ghostly shipwrecks that are virtually intact, submerged underwater. This makes for great diving expeditions where you can explore the reef and its incredible marine life as well as the shipwrecks.

Day 14 Lamotrek Atoll

Like a green piece of confetti floating in the middle of the Northern Pacific, the coral atoll of Lamotrek will appear before you like a dazzling gem set in a remarkable and stunning showcase. Belonging to the vast archipelago of the Caroline Islands, this small slice of paradise and its charming neighbours are home to one of the widest varieties of coral and tropical fish species in the world, making it an idyllic destination for marine life enthusiasts. Beyond the stretches of immaculate, white-sand beach, the dream continues. Off in the distance can be heard the captivating sounds of traditional songs sung by some 300 islanders who still live here, resonating in this unparalleled natural environment blending unspoiled vegetation and vast, heavenly ribbons of sand.

Day 15 Ifalik Atoll

The Ifalik coral atoll, lying in the warm waters of the North Pacific, in the vast Caroline Island archipelago, is an invitation to serenity, enchantment and discovery. A veritable hidden paradise edged with magnificent beaches with expanses of fine sand, Ifalik will reveal its treasures to you. Between the sumptuous underwater scenery, rich biodiversity, ancestral traditions and warm and welcoming inhabitants, you will marvel at this lush environment, unlike anywhere else, and far from the frenzy of any town.

Day 16 At sea

Wild Earth Travel

Small Ships, Big Adventures

0800 945 3327 (within New Zealand) | +64 (0) 3 365 1355 | **1800 107 715** (within Australia)

info@wildearth-travel.com | wildearth-travel.com



Wild Earth Travel

Small Ships, Big Adventures



wildearth-travel.com

info@wildearth-travel.com

During your journey at sea, make the most of the many services and activities on board. Treat yourself to a moment of relaxation in the spa or stay in shape in the fitness centre. Depending on the season, let yourself be tempted by the swimming pool or a spot of sunbathing. This journey without a port of call will also be an opportunity to enjoy the conferences or shows proposed on board, depending on the activities offered, or to do some shopping in the boutique or to meet the PONANT photographers in their dedicated space. As for lovers of the open sea, they will be able to visit the ship's upper deck to admire the spectacle of the waves and perhaps be lucky enough to observe marine species. A truly enchanted interlude, combining comfort, rest and entertainment.

Day 17 Guam

In the Western Pacific, you will call at Guam, the largest volcanic island of Micronesia and the Mariana Islands. Here, the crystal-clear waters and white sandy beaches create a picture-postcard setting, ideal for relaxation and a break from it all. This little-known island, today under the administration of the United States, also offers you the opportunity to visit a number of historical sites, vestiges of Spanish colonisation, and to discover the culture of the Chamorros, the first inhabitants of the islands, talented craftspeople who have preserved their traditions.

Please note:

Itineraries are subject to change.

Wild Earth Travel

Small Ships, Big Adventures



wildearth-travel.com

info@wildearth-travel.com

YOUR SHIP: LE JACQUES CARTIER

YOUR SHIP: Le Jacques Cartier

VESSEL TYPE: Luxury

LENGTH:

PASSENGER CAPACITY: 92 cabins

BUILT/REFURBISHED: 2018/2019

Featuring innovative and environmentally-friendly equipment, elegantly designed staterooms, spacious suites with large windows, and lounge areas that open onto the outside, this new limited-capacity yacht boasting just 92 staterooms and suites will offer you a truly unique cruising experience.

As the sixth ship in a new series that remains true to the Ponant spirit, Le Jacques Cartier will embody the unique atmosphere that is the cruise line's hallmark: a subtle blend of refinement, intimacy and comfort.

Aboard this ship that flies the French flag, you will experience the incomparable pleasure of an intimate cruise, with the possibility of exploring an ever-increasing range of destinations in an ethnic-chic ambiance with luxury service.

Experience a luxurious setting where the accent is on authenticity and passion for travel.

RESTAURANTS

As it is an essential part of French culture, gastronomy will naturally have pride of place aboard this new ship.

To the back of Deck 4, you will find a 260 m² panoramic restaurant which can accommodate all of our passengers in a single sitting. Designed differently to that on our other ships, this

dining area, which opens onto the outside, will have a buffet of salads, desserts and cheeses at your disposal. Our discreet and attentive crew will provide table service for hot meals.

In a relaxed atmosphere, an outdoor grill on Deck 3 will serve grilled meats with a variety of salads and desserts.

PUBLIC AREAS

Le Jacques Cartier has many common areas that are designed and equipped to meet all of your needs while preserving the intimacy of each passenger.

A 140 m² reception area includes:

A reception/concierge desk,

An excursions desk,

The ship's administrative services,

The sales office, manned by our Guest Relations Officer,

Our 50 m² boutique which sells clothing, jewellery, beauty products, postcards and various accessories,

Toilets accessible to passengers with reduced mobility.

A new hydraulic platform with adjustable height provides:

Easier boarding than on any other cruise ship,

Easier Zodiac embarkation and disembarkation for expeditions,

Easier access to the sea for swimming and practising various water sports such as kayaking or paddle-boarding.

A pool deck offering:

A pool with a panoramic view, equipped with a counter-current swimming system,

A pleasant solarium,

An outdoor bar and lounge with armchairs and sofas.

A 200 m² main lounge which can accommodate all of our passengers to share convivial moments and to host activities

Wild Earth Travel

Small Ships, Big Adventures

0800 945 3327 (within New Zealand) | +64 (0) 3 365 1355 | **1800 107 715** (within Australia)

info@wildearth-travel.com | wildearth-travel.com



Wild Earth Travel

Small Ships, Big Adventures



wildearth-travel.com

info@wildearth-travel.com

organised during the day or evening.

Lastly, a theatre that seats 188, equipped with:

The latest sound and lighting technology,

A LED wall as the stage backdrop, for the projection of high-resolution images and videos.



and videos.



Wild Earth Travel

Small Ships, Big Adventures

0800 945 3327 (within New Zealand) | +64 (0) 3 365 1355 | **1800 107 715** (within Australia)

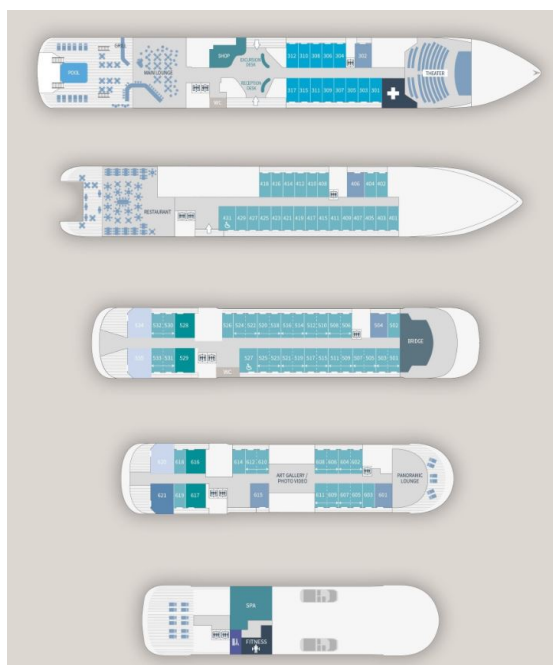
info@wildearth-travel.com | **wildearth-travel.com**



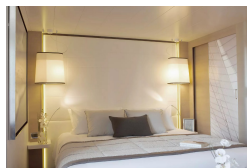
wildearth-travel.com

info@wildearth-travel.com

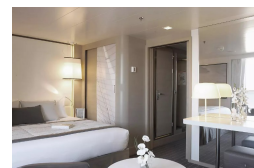
INSIDE YOUR SHIP



Deluxe Stateroom



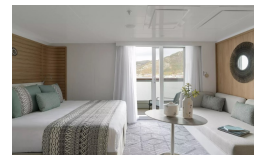
Deluxe Suite



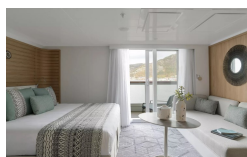
Deluxe Suite Deck 3



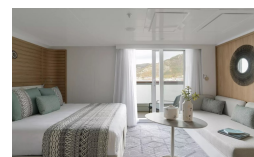
Deluxe Suite Deck 4



Deluxe Suite Deck 5



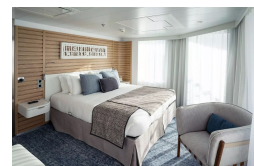
Deluxe Suite Deck 6



Grand Deluxe Suite Deck 5



Grand Deluxe Suite Deck 6



Wild Earth Travel

Small Ships, Big Adventures

wildearth-travel.com

info@wildearth-travel.com

PRICING

23-Feb-2026 to 11-Mar-2026

Superior Stateroom	13350 AUD pp
Deluxe Stateroom	14460 AUD pp
Prestige Deck 4	16050 AUD pp
Prestige Deck 5	16840 AUD pp
Prestige Deck 6	17800 AUD pp
Deluxe Suite	24810 AUD pp
Prestige Deck 5 Suite	33540 AUD pp
Prestige Deck 6 Suite	35300 AUD pp

20-Feb-2027 to 08-Mar-2027

Deluxe Stateroom	13900 AUD pp
Prestige Deck 4	15420 AUD pp
Prestige Deck 5	16180 AUD pp
Prestige Deck 6	17090 AUD pp
Deluxe Suite Deck 4	22260 AUD pp
Deluxe Suite Deck 5	22260 AUD pp
Deluxe Suite Deck 6	22260 AUD pp
Deluxe Suite Deck 3	22260 AUD pp
Prestige Deck 5 Suite	26820 AUD pp
Prestige Deck 6 Suite	28030 AUD pp
Privilege Suite Deck 5	28940 AUD pp
Privilege Suite Deck 6	28940 AUD pp
Grand Deluxe Suite Deck 5	29860 AUD pp
Grand Deluxe Suite Deck 6	29860 AUD pp

22-Feb-2027 to 09-Mar-2027

Superior Stateroom	12040 AUD pp
Deluxe Stateroom	13030 AUD pp
Prestige Deck 4	14460 AUD pp
Prestige Deck 5	15170 AUD pp
Prestige Deck 6	16020 AUD pp
Deluxe Suite	20870 AUD pp
Prestige Deck 5 Suite	25140 AUD pp
Prestige Deck 6 Suite	26280 AUD pp



Wild Earth Travel

Small Ships, Big Adventures



wildearth-travel.com

info@wildearth-travel.com

SPECIAL OFFERS

Online prices reflect the current brochure fare savings of up to 30%. Prices may change based on demand. Terms and conditions apply. This special offer is subject to availability. Please contact us for more details.

Wild Earth Travel

Small Ships, Big Adventures

0800 945 3327 (within New Zealand) | +64 (0) 3 365 1355 | **1800 107 715** (within Australia)

info@wildearth-travel.com | **wildearth-travel.com**