

Wild Earth Travel

Small Ships, Big Adventures

wildearth-travel.com

info@wildearth-travel.com

FROM CELTIC SHORES TO THE BAY OF BISCAY LUXURY CRUISE

Fall under the spell of the melancholic beauty and fascinating history of the British, Irish and French coastlines. From Glasgow to Bordeaux, each port of call offers breathtaking marine panoramas and reveals a rich heritage with a harmonious blend of maritime legacy and living traditions. While the Celtic legends wrap the shores in a mysterious aura, the picturesque cities will unveil their history via their ancient fortifications, shipyards and cobbled streets, immersing visitors in an authentic and vibrant way of life. An unforgettable cultural escapade, in the heart of lands that have been shaped by the sea and the weather.



ITINERARY

Day 1 - Glasgow, Scotland

In the heart of the Clyde Valley, the bustling city of Glasgow contrasts starkly with the wild beauty of the surrounding countryside. Scotland's biggest city overflows with landmarks from its extensive artistic heritage and outstanding architectural tradition. The city's chequerboard layout makes walking through the major pedestrian thoroughfares easy: go with the flow and let the lively street atmosphere take you past the many Victorian monuments. Don't miss the collections on display in the numerous museums and art galleries. The Kelvingrove Art Gallery and Museum is an outstanding example.

Day 2 - Belfast, Northern Ireland

Wild Earth Travel

Small Ships, Big Adventures

0800 945 3327 (within New Zealand) | +64 (0) 3 365 1355 | **1800 107 715** (within Australia)

info@wildearth-travel.com | **wildearth-travel.com**

Wild Earth Travel

Small Ships, Big Adventures

wildearth-travel.com

info@wildearth-travel.com

The capital city of Northern Ireland is located on the very tip of Belfast Lough, in the north-east of the Emerald Isle. Along the waterfront, the building shaped like a fragmented liner is non other than the Titanic Belfast, a homage to the famous transatlantic liner, with full-scale reconstructions making for an insightful experience of the Belle Epoque. In the historical centre, you'll also travel back in time when you see the majestic Edwardian columns of the City Hall, and the imposing neo-gothic towers of Queen's University for example. The carved wooden façades of the Victorian pubs will certainly entice you in for a pint of beer or chilled cider.

Day 3 - Dublin

The Irish capital stretches along the banks of the Liffey to Dublin bay, on the East coast of Ireland. Discover Ireland's warm conviviality in the pedestrian district of Temple Bar. Its cobbled streets are brimming with fabulous shops, pubs and arts centres. Next to Trinity College, famous for its 18th century library, you can stroll along Grafton Street: in one of its famous tea shops, try a delicious scone and clotted cream served hot and melt-in-the-mouth with jam. Not far from here, the majestic O'Connell bridge leads you to the avenue with the same name, on which Spire, a luminous contemporary sculpture presides.

Day 4 - Cobh

From the very endearing small town of Cobh, you will set out to discover Cork, rich with a history that goes back to Viking times. During our visit here, we invite you to take an exceptional trip to Blarney Castle, dating from 1446 and renowned for its legends and its ancient stones. At the end of your visit, do not miss the chance of kissing the "Stone of Eloquence", located at the top of the monument, which legend tells will confer its powers upon you.

Day 5 - Brest

Built around a magnificent harbour, Brest opens onto the Iroise Sea and the river Penfeld that runs through the city. Its port was used by the French navy for centuries before becoming an important commercial port and marina appreciated by the great navigators. As you stroll along Quai Commandant Malbert, you may catch a glimpse of the superb schooner La Recouvrance and, in the distance, a few lighthouses along the chiselled coastline. You will be able to discover the marine ecosystems at the Oceanopolis centre and visit

the naval museum housed in Chateau de Brest. Officially recognised as a city of art and history, Brest will also charm you with its architectural eclecticism, mingling modernism, neoclassicism, art nouveau and art deco.

Day 6 - Concarneau

An emblematic town in Brittany, it is hard to resist the delights of Concarneau. The "blue town" will astonish and surprise you with its charm and history. Stroll along the streets of the Ville Close, with its remarkable walls and fortifications overlooking Concarneau Bay. Since the siege of the town by Duguesclin in the 16th Century, it has maintained its taste for adventure. The maritime history of the town and its canning industry is examined in the interesting fishing museum (Musée de la Pêche). Also, do not miss the visit to Keriotelet Castle, a neo-gothic gem built in the 19th Century by a Russian imperial princess.

Day 7 - Saint-Nazaire

Saint-Nazaire has a rich and varied heritage that is simultaneously urban, maritime, industrial and military. Its preserved coastline, mixing beaches and lush cliffs, rubs shoulders with an industrial façade opening onto the Loire estuary, which is home to impressive shipyards that are renowned around the world for the construction of gigantic ships. Recently labelled a "Town of Art and History", Saint-Nazaire asserts its singular identity, at the crossroads of nature and industry, history and innovation, charming visitors with each discovery. It also offers privileged access to other jewels of the Pays de la Loire region, such as the medieval town of Guerande, Nantes or the Briere Regional Natural Park.

Day 8 - Royan

A seaside resort whose architecture blends Belle Époque and modernism, Royan offers a quiet port of call on the Atlantic Coast. Its wide beaches, its covered market and its retro villas are as appealing as its prime position: ideal for discovering some of the region's treasures, such as the island of Oleron and its famous oysters, Talmont-sur-Gironde, one of the most beautiful villages in France, or the iconic port city of La Rochelle.

Day 9 - Bordeaux

Wild Earth Travel

Small Ships, Big Adventures

0800 945 3327 (within New Zealand) | +64 (0) 3 365 1355 | **1800 107 715** (within Australia)

info@wildearth-travel.com | wildearth-travel.com



Wild Earth Travel

Small Ships, Big Adventures

wildearth-travel.com

info@wildearth-travel.com

Bordeaux stretches along the banks of the Garonne river, in South-West France. Its rich wine tradition makes it the world capital of wine. Let yourself be carried away by the history of the Port de la Lune, made a UNESCO World Heritage site for its prestigious classical architecture. On the famous Place de la Bourse, the past and the present unite: here you can observe the majestic old buildings reflected in the contemporary Miroir d'eau creation.

Please note:

Itineraries are subject to change.

Wild Earth Travel

Small Ships, Big Adventures

0800 945 3327 (within New Zealand) | +64 (0) 3 365 1355 | **1800 107 715** (within Australia)

info@wildearth-travel.com | **wildearth-travel.com**

Wild Earth Travel

Small Ships, Big Adventures

wildearth-travel.com

info@wildearth-travel.com

YOUR SHIP: LE CHAMPLAIN

YOUR SHIP:	Le Champlain
VESSEL TYPE:	Luxury
LENGTH:	127 metres
PASSENGER CAPACITY:	92 cabins
BUILT/REFURBISHED:	2017/2018

Featuring innovative and environmentally-friendly equipment, elegantly designed cabins, spacious suites with large windows, and lounge areas that open onto the outside, this new limited-capacity yacht boasting just 92 cabins and suites will offer you a truly unique cruising experience.

As the first ship in a new series, Le Champlain will embody the unique atmosphere that is the cruise line's hallmark: a subtle blend of refinement, intimacy and comfort.

Aboard this ship that flies the French flag, you will experience the incomparable pleasure of an intimate cruise, with the possibility of exploring an ever-increasing range of destinations in an ethnic-chic ambiance with luxury service.

Experience a luxurious setting where the accent is on authenticity and passion for travel.

RESTAURANTS

As it is an essential part of French culture, gastronomy will naturally have pride of place aboard this new ship. Through its two restaurants, Le Champlain will invite you on a journey to elegance and epicureanism.

In a relaxed atmosphere, a first dining area located on Deck 3 and able to seat 70 will serve grilled meats daily, along with a

variety of salads and desserts.

To the back of Deck 4, you will find a 260 m² panoramic restaurant which can accommodate all of our passengers in a single sitting. Designed differently to that on our other ships, this dining area, which opens onto the outside, will have a buffet of salads, desserts and cheeses at your disposal. Our discreet and attentive crew will provide table service for hot meals.

PUBLIC AREAS

Like Le Boreal and its sisterships, Le Champlain has many common areas that are designed and equipped to meet all of your needs while preserving the intimacy of each passenger.

A 140 m² reception area includes: A reception/concierge desk, An excursions desk, The ship's administrative services, The sales office, manned by our Guest Relations Officer, Our 50 m² boutique which sells clothing, jewellery, beauty products, postcards and various accessories, Toilets accessible to passengers with reduced mobility.

A new hydraulic platform with adjustable height provides: Easier boarding than on any other cruise ship, Easier Zodiac embarkation and disembarkation for expeditions, Easier access to the sea for swimming and practising various water sports such as kayaking or paddle-boarding.

A pool deck offering: A pool with a panoramic view, equipped with a counter-current swimming system, A pleasant solarium, An outdoor bar and lounge with armchairs and sofas.

A 200 m² main lounge which can accommodate all of our passengers to share convivial moments and to host activities organised during the day or evening.

Lastly, a theatre that seats 188, equipped with: The latest

Wild Earth Travel

Small Ships, Big Adventures

0800 945 3327 (within New Zealand) | +64 (0) 3 365 1355 | **1800 107 715** (within Australia)

info@wildearth-travel.com | **wildearth-travel.com**

Wild Earth Travel

Small Ships, Big Adventures



wildearth-travel.com

info@wildearth-travel.com

sound and lighting technology, A LED wall as the stage backdrop, for the projection of high-resolution images and videos.



and videos.

Wild Earth Travel

Small Ships, Big Adventures

0800 945 3327 (within New Zealand) | +64 (0) 3 365 1355 | **1800 107 715** (within Australia)

info@wildearth-travel.com | **wildearth-travel.com**

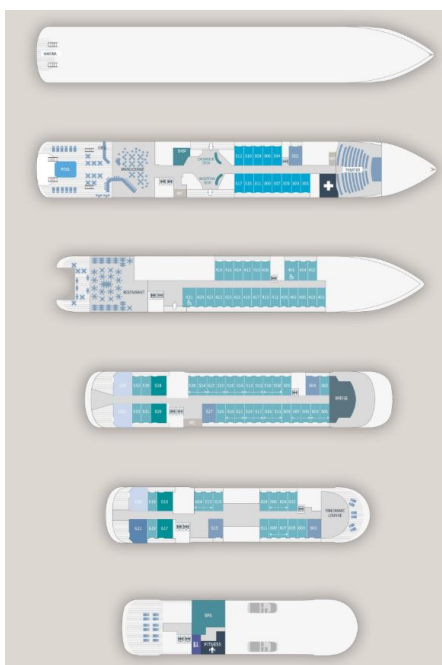
Wild Earth Travel

Small Ships, Big Adventures

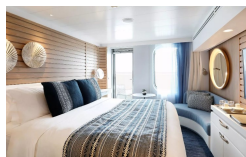
wildearth-travel.com

info@wildearth-travel.com

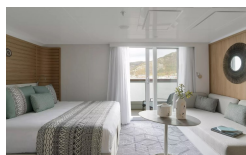
INSIDE YOUR SHIP



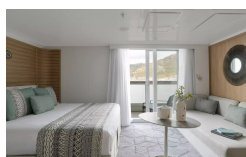
Deluxe Stateroom



Deluxe Suite Deck 4



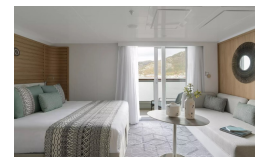
Deluxe Suite Deck 6



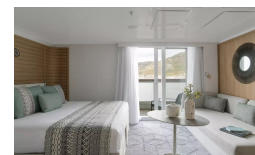
Grand Deluxe Suite Deck 6



Deluxe Suite Deck 3



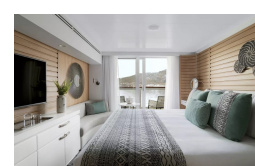
Deluxe Suite Deck 5



Grand Deluxe Suite Deck 5



Prestige Deck 4



Wild Earth Travel

Small Ships, Big Adventures

0800 945 3327 (within New Zealand) | +64 (0) 3 365 1355 | 1800 107 715 (within Australia)

info@wildearth-travel.com | wildearth-travel.com

Wild Earth Travel

Small Ships, Big Adventures

wildearth-travel.com

info@wildearth-travel.com

PRICING

01-Oct-2027 to 09-Oct-2027

Deluxe Stateroom	6840 AUD pp
Prestige Deck 4	7180 AUD pp
Prestige Deck 5	7400 AUD pp
Prestige Deck 6	7680 AUD pp
Deluxe Suite Deck 3	10290 AUD pp
Deluxe Suite Deck 4	10290 AUD pp
Deluxe Suite Deck 5	10290 AUD pp
Deluxe Suite Deck 6	10290 AUD pp
Prestige Deck 5 Suite	11060 AUD pp
Prestige Deck 6 Suite	11410 AUD pp
Privilege Suite Deck 5	11690 AUD pp
Privilege Suite Deck 6	11690 AUD pp
Grand Deluxe Suite Deck 6	12050 AUD pp
Grand Deluxe Suite Deck 5	12050 AUD pp

Wild Earth Travel

Small Ships, Big Adventures

0800 945 3327 (within New Zealand) | +64 (0) 3 365 1355 | **1800 107 715** (within Australia)

info@wildearth-travel.com | **wildearth-travel.com**



Wild Earth Travel

Small Ships, Big Adventures



wildearth-travel.com

info@wildearth-travel.com

SPECIAL OFFER

Online prices reflect the current brochure fare savings of up to 30%. Prices may change based on demand. Terms and conditions apply. This special offer is subject to availability. Please contact us for more details.



Wild Earth Travel

Small Ships, Big Adventures

0800 945 3327 (within New Zealand) | +64 (0) 3 365 1355 | **1800 107 715** (within Australia)

info@wildearth-travel.com | **wildearth-travel.com**