

# Wild Earth Travel

*Small Ships, Big Adventures*

**wildearth-travel.com**

**info@wildearth-travel.com**

## FOLLOW THE NORTHERN LIGHTS — FINLAND TO NORWAY

We begin from Helsinki on this fully escorted southbound search for the Aurora Borealis. During the tour we cross Finland and Norway, visit charming hamlets, and sail through picturesque fjords, all the while making the most of plentiful opportunities to see the magnificent Northern Lights. Along the way, enjoy unique accommodation in both an Aurora Cabin and a Gamme cabin and meet the huskies and reindeer of the region.

Your trip also includes the amazing journey by rail, coach and ferry on the famous 'Norway in a Nutshell' route between Bergen and Oslo.



### ITINERARY

#### DAY 1 Arrive in Finland \*

Helsinki

Welcome to Finland!

Helsinki is often dubbed one of the world's most liveable cities due to its vibrant nature and delicate balance of historic architecture and contemporary living. Make your own way to the hotel and spend the afternoon on your own exploring the city and discovering the many hidden gems, cafes and restaurants dotted around the city centre.

Wild Earth Travel

*Small Ships, Big Adventures*

**0800 945 3327** (within New Zealand) | +64 (0) 3 365 1355 | **1800 107 715** (within Australia)

info@wildearth-travel.com | **wildearth-travel.com**

# Wild Earth Travel

*Small Ships, Big Adventures*



**wildearth-travel.com**

**info@wildearth-travel.com**

In the evening, you will have the opportunity to meet your fellow travellers and tour escort for an included welcome dinner as you prepare to follow the Northern Lights through Finland and Norway.

## DAY 2 Finland's Capital \*

Helsinki

On our first full day, we'll embark on a coach tour of the city and learn more about Helsinki's past and present from our English-speaking guide.

Highlights include the City Hall, the Parliament buildings, Finlandia Hall, the Opera House and, weather permitting, the popular Sibelius monument.

Another iconic stop on the tour is a visit to the Tempelaaikio Church, built into the bedrock of the city it has also become known as the 'Church of Rock' and a nod to the city's modern culture.

## DAY 3 To Finnish Lapland \*

Rovaniemi

In the morning we set out from Helsinki and start our journey towards Finnish Lapland and the arctic wilderness. Jump on board the train from Helsinki to Rovaniemi - the reputed home of Santa Claus. As the train winds north gaze upon snow-capped forests and a true winter wonderland.

Arriving in Rovaniemi, we are now in the capital of Finnish Lapland, where you will have the afternoon to explore this quaint town at your leisure. At night, keep your eyes on the skies as we are above the arctic circle, the chances of spotting the Northern Lights increase.

## DAY 4 Canine Companions \*

Rovaniemi

Wake up in the heart of Lapland and prepare for our first authentic experience, a meeting with the cute furry locals at a husky kennel. Learn about how huskies are reared to become as fit and as hardy as the local Sami people who have worked with these iconic arctic heroes for many years. After getting to know these animals we will enjoy lunch before joining a thrilling husky-drawn cart or sled ride through the Lapland wilderness with your new furry friends.

After spending the day living like a local, warm up with a hot drink at Lappish Kota, a traditional wooden hut dawning with reindeer hides and a roaring fire.

## DAY 5 Santa and Reindeers \*

Saariselka

Feel like a child again as we spend the morning exploring the wonderful Santa Claus Village, and even get to meet the man himself!

In the afternoon we continue our journey north making a short stop to see the Sodankylä Old Church before continuing to the Northern Lights Village of Saariselka. Upon arrival, be wowed at your accommodation for the night - your very own Aurora Cabin or Glass Igloo where you can watch the Northern Lights from your bed whenever they appear.

Following the included dinner at the hotel, we'll be welcomed into the traditional tent of a local Sami family who'll talk enthusiastically about their unique culture and lifestyle. Feed the family's reindeer in the nearby paddock or practise your lasso skills under your host's expert tutelage. Weather permitting, we will also enjoy a reindeer sleigh ride. If you are really lucky, you can even catch a glimpse of the Northern Lights on this authentic Arctic experience.

## DAY 6 Sámi History and Huskies \*

Wild Earth Travel

*Small Ships, Big Adventures*

**0800 945 3327** (within New Zealand) | +64 (0) 3 365 1355 | **1800 107 715** (within Australia)

info@wildearth-travel.com | **wildearth-travel.com**



# Wild Earth Travel

*Small Ships, Big Adventures*

**wildearth-travel.com**

**info@wildearth-travel.com**

Kirkenes - right on the border

As we continue North through the Finnish Lapland we arrive in the small township of Inari, the Sami capital (traditional nomads of Scandinavia, reindeer herders). On our stop in Inari, we will visit the newly renovated SIIDA museum - which is home to a collection featuring the spiritual and material culture of the Finnish Sami presented to the public through exhibitions and publications.

In the afternoon we cross into Norway and arrive at the iconic Snowhotel in Kirkenes, where you have the opportunity to join an optional excursion, choosing from activities such as king crab or Northern Lights safaris. Spend the night inside a traditional Gamme cabin, inspired by the traditional hunting and fishing hut known as 'gamme' which are typically found in the Lapland wilderness. Tonight's included dinner is in the unique farmhouse restaurant, Laven.

## DAY 7 Your Hurtigruten Coastal Express Voyage Starts \*

Kirkenes - right on the border, Berlevag - "cool and crazy"

Your voyage onboard the Coastal Express begins in the Arctic in the town of Kirkenes. Our first port of call is Vardø and its iconic star-shaped Vardøhus Fortress, built in 1737. The northernmost fortification of any kind, it remains a part of the military to this day. Weather permitting, brave swimmers may want to take a dip in the icy Arctic Ocean (strictly optional of course!).

We cruise Norway's coastline to arrive in the small port of Batsfjord in the evening and then on to Berlevag. You might be able to make out Mount Tanahorn to the west, or see Kjølnes Lighthouse blinking atop a cliff overlooking the Barents Sea. These two idyllic ports are home to Norway's most famous male choir, comprising local fishermen.

## DAY 8 Unmatched Arctic Scenery \*

Hammerfest

We make a late-night stop at Mehamn, where there is the option to join snowmobile trip through the vast Arctic wilderness. A great opportunity to experience snowy plains and valleys, crisp winter air under the Northern Lights in the starry sky above.

During the day we pass through various ports including Honningsvåg and Hammerfest where you can visit the UNESCO-listed Meridian Column, erected in 1854 to honour the first precise geographic measurement of the globe.

Late in the evening, we arrive at Tromsø, in time to enjoy a magical Northern Lights concert at the Arctic Cathedral in winter (optional).

## DAY 9 Lofoten, Where Nature Amazes \*

Svolvær - at the heart of Lofoten

This morning, we arrive at Harstad, where you can join one of our optional classic excursions - A Taste of Vesterålen. Discover the history, beautiful scenery, and cultural heritage sites of this iconic and breathtaking landscape. Those who stay on the ship experience our passage through the Risøyrenna, a shallow channel built for Hurtigruten in the 1920s.

Prepare for some amazing scenery as we sail through the world-famous islands of Lofoten and Vesterålen. Lofoten is known for its natural beauty, steep mountains, wilderness and picturesque fishing villages. After a short stop at the tiny village of Risøyhamn, we continue to Stokmarknes, where Hurtigruten began in 1893.

Continuing south, it will look like we're headed straight into a mountain, but don't worry, we are in fact sailing through a passage into the narrow Raftsund, flanked by peaks rising 1000m out of the sea. If that wasn't enough, we arrive at amazing Trollfjord. If conditions allow, we will sail between sheer cliffs that seem close enough to reach out and touch. It's an unforgettable experience!

## DAY 10 Cross the Arctic Circle \*

Wild Earth Travel

*Small Ships, Big Adventures*

**0800 945 3327** (within New Zealand) | +64 (0) 3 365 1355 | **1800 107 715** (within Australia)

info@wildearth-travel.com | **wildearth-travel.com**

# Wild Earth Travel

*Small Ships, Big Adventures*



**wildearth-travel.com**

**info@wildearth-travel.com**

Brønnøysund - coastal charm right in the middle of Norway

We then cross over the Arctic Circle just after breakfast. Commemorate the moment with a tradition of tasting a spoonful of good ol' cod liver oil!

Sailing along the Helgeland coast, you see the strange mountain, Torgatten, famous for the distinctive hole through its centre. There is a local legend as to why and how this mountain came to have such a hole. Make sure you ask your Coastal Expert about it!

Another highlight is sailing past the Seven Sisters mountain range. It is easy to see how the peaks influenced ancient legends. The story goes that seven beautiful troll sisters were caught out at sunrise and turned to stone, thus creating the seven beautiful mountaintops.

Even though we're south of the Arctic Circle, there may still be good opportunities to see the Northern Lights.

## DAY 11 Rich History and Living Culture \*

Trondheim - Norway's capital of technology

Today you have a chance to explore the wooden city of history: Trondheim. Be sure to visit the majestic Nidaros Cathedral, built over the burial site of King Olav II who reigned from 1015 to 1028. Treat yourself to quality coffee and a Nordic patisserie in one of the Baklandet district's many chic cafes then walk up to Kristiansten Fort for great views of Norway's third-largest city.

As we sail along the coast, you will realise the importance of fishing to Norway's coastal communities. Kristiansund is regarded as Norway's 'dried cod capital' because of its long-time export of salted dry fish. An interesting excursion is to the Bergtatt marble mine, which takes you inside a mountain and across an illuminated subterranean lake before serving you a meal in the mine's 'Grand Hall'.

## DAY 12 A Fjord Farewell \*

Bergen - gateway to the fjords

During the night, the ship calls at Ålesund, Torvik and Maløy, as our voyage draws to a close. Before docking in Bergen, there is fascinating scenery to experience, including picturesque Nordfjord beneath Jostedal Glacier.

A few nautical miles south of Florø, we cross the mouth of the mighty Sognefjord, taking in superb views of the magnificent island-studded coastline en route. In the early afternoon, we arrive in the Hanseatic city of Bergen where our time on the Coastal Express comes to an end. After disembarkation we join our private coach for a city tour including a walking tour of the UNESCO World Heritage listed Bryggen, St Mary's Church, and Hakon's Hall, before heading to Trolldhaugen, the home of Norway's most famous composer, Edvard Grieg.

After arrival at the hotel the evening is yours to enjoy and explore this vibrant city. One recommendation is to take the Fløibanen funicular to the top of nearby Mount Fløyen to enjoy views of Bergen and the surrounding mountains.

## DAY 13 Norway in a Nutshell \*

Oslo

Today enjoy an amazing journey by rail, coach and ferry on the famous 'Norway in a Nutshell' route between Bergen and Oslo. We start with a rail journey from Bergen to Voss, from here we travel by coach to Gudvangen - where waterfalls line the road as we weave our way through the valley.

In Gudvangen board a ferry and enjoy a fjord cruise along the narrow and dramatic UNESCO protected Naerøfjord, ending in the quaint village of Flam. As we climb three thousand feet to the mountain train station of Myrdal, you will understand why this is considered one of the world's most scenic rail journeys. From here we continue south to our final stop in Oslo.

## DAY 14 Sightseeing in Oslo \*

Oslo

Wild Earth Travel

*Small Ships, Big Adventures*

**0800 945 3327** (within New Zealand) | +64 (0) 3 365 1355 | **1800 107 715** (within Australia)

info@wildearth-travel.com | wildearth-travel.com



# Wild Earth Travel

*Small Ships, Big Adventures*



**wildearth-travel.com**

**info@wildearth-travel.com**

Enjoy breakfast in the hotel and prepare for our final full day on tour.

On our coach tour learn more about this vibrant European city, as we journey through the history of Oslo, from the world's largest sculpture park by a single artist - Vigeland Sculpture Park to the site of the 1952 Winter Olympics and the Holmenkollen Ski Jump.

The afternoon is your to continue exploring before joining your fellow travellers and tour escort for our final farewell dinner in a local restaurant.

## DAY 15 Your adventure ends \*

### Oslo

It is in the morning that we say goodbye as this exciting arctic adventure comes to an end. Depart the hotel with lifelong memories of your time in Norway and Finland under the dancing skies of the Northern Lights.

### Please note: \*

The day-by-day programme will give you some ideas about what you can see during your voyage, but bear in mind that this itinerary is just an indication. After all, this is a sailing where the elements rule and weather conditions might vary.

Wild Earth Travel

*Small Ships, Big Adventures*

**0800 945 3327** (within New Zealand) | +64 (0) 3 365 1355 | **1800 107 715** (within Australia)

info@wildearth-travel.com | **wildearth-travel.com**

# Wild Earth Travel

*Small Ships, Big Adventures*

**wildearth-travel.com**

**info@wildearth-travel.com**

## YOUR SHIP: NORDKAPP

<b>YOUR SHIP:</b>	<b>Nordkapp</b>
<b>VESSEL TYPE:</b>	<b>Expedition Ship</b>
<b>LENGTH:</b>	<b>123.3 m</b>
<b>PASSENGER CAPACITY:</b>	<b>473</b>
<b>BUILT/REFURBISHED:</b>	<b>1996/2016/2022</b>

MS Nordkapp, named after Norway's iconic North Cape, has been a proud part of the Hurtigruten fleet since 1996 and was refurbished in 2016 with a sleek Arctic-inspired design. The ship features three distinct restaurants serving local Norwegian cuisine, a cosy bakery, a panoramic Explorer Lounge & Bar, a sauna and fitness room, and two outdoor hot tubs with stunning coastal views. With a warm, Nordic atmosphere, MS Nordkapp offers a relaxed and immersive way to experience the dramatic Norwegian coast.

The ship accommodates up to 473 guests in a variety of cabin types, from comfortable outside cabins to spacious expedition suites. Guests are accompanied by an expert Expedition Team offering lectures, excursions, and guided hikes that bring Norway's nature, culture, and history to life. Whether you're enjoying fresh waffles at Multe or sipping cocktails as the Northern Lights dance above, MS Nordkapp is designed for a memorable, meaningful journey along one of the world's most scenic coastlines.



Wild Earth Travel

*Small Ships, Big Adventures*

**0800 945 3327** (within New Zealand) | +64 (0) 3 365 1355 | **1800 107 715** (within Australia)

info@wildearth-travel.com | **wildearth-travel.com**



# Wild Earth Travel

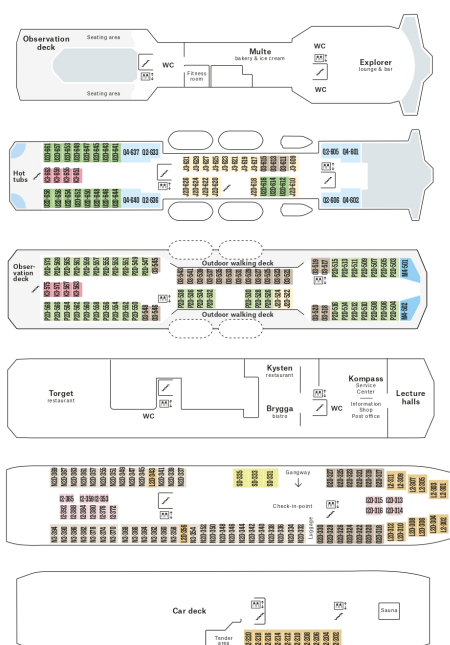
*Small Ships, Big Adventures*



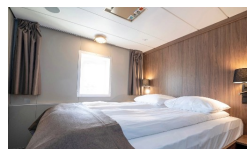
[wildearth-travel.com](http://wildearth-travel.com)

[info@wildearth-travel.com](mailto:info@wildearth-travel.com)

## INSIDE YOUR SHIP



Arctic Superior



Expedition Suite



Polar Inside



Polar Outside



# Wild Earth Travel

*Small Ships, Big Adventures*

**wildearth-travel.com**

**info@wildearth-travel.com**

## PRICING

### 23-Sep-2026 to 07-Oct-2026

Polar Outside	8820 AUD pp
Arctic Superior	9989 AUD pp
Expedition Suite	11672 AUD pp
Polar Inside	0 pp

### 01-Oct-2026 to 15-Oct-2026

Polar Inside	8299 AUD pp
Polar Outside	8574 AUD pp
Arctic Superior	9377 AUD pp
Expedition Suite	11511 AUD pp

### 04-Oct-2026 to 18-Oct-2026

Polar Outside	8712 AUD pp
Arctic Superior	9859 AUD pp
Expedition Suite	11511 AUD pp
Polar Inside	0 pp

### 09-Oct-2026 to 23-Oct-2026

Polar Inside	8299 AUD pp
Arctic Superior	9469 AUD pp
Expedition Suite	11511 AUD pp
Polar Outside	0 pp

### 15-Oct-2026 to 29-Oct-2026

Polar Outside	8575 AUD pp
Arctic Superior	9620 AUD pp
Expedition Suite	11125 AUD pp
Polar Inside	0 pp

### 17-Oct-2026 to 31-Oct-2026

Polar Inside	8199 AUD pp
Polar Outside	8450 AUD pp
Arctic Superior	9265 AUD pp
Expedition Suite	11125 AUD pp

### 23-Oct-2026 to 06-Nov-2026

Polar Inside	8199 AUD pp
Polar Outside	8450 AUD pp
Arctic Superior	9181 AUD pp
Expedition Suite	11125 AUD pp

### 28-Oct-2026 to 11-Nov-2026

Polar Inside	8199 AUD pp
Polar Outside	8450 AUD pp
Arctic Superior	9265 AUD pp
Expedition Suite	11125 AUD pp

### 06-Nov-2026 to 20-Nov-2026

Polar Outside	8351 AUD pp
Arctic Superior	9328 AUD pp
Expedition Suite	10734 AUD pp
Polar Inside	0 pp



# Wild Earth Travel

*Small Ships, Big Adventures*

**wildearth-travel.com**

**info@wildearth-travel.com**

## PRICING

### 09-Nov-2026 to 23-Nov-2026

Polar Inside	7999 AUD pp
Polar Outside	8234 AUD pp
Arctic Superior	8996 AUD pp
Expedition Suite	10734 AUD pp

### 14-Nov-2026 to 28-Nov-2026

Polar Inside	7999 AUD pp
Polar Outside	8234 AUD pp
Arctic Superior	8918 AUD pp
Expedition Suite	10734 AUD pp

### 17-Nov-2026 to 01-Dec-2026

Polar Outside	8851 AUD pp
Arctic Superior	9828 AUD pp
Expedition Suite	11234 AUD pp
Polar Inside	0 pp

### 28-Nov-2026 to 12-Dec-2026

Polar Outside	8992 AUD pp
Arctic Superior	9807 AUD pp
Expedition Suite	10980 AUD pp
Polar Inside	0 pp

### 01-Dec-2026 to 15-Dec-2026

Polar Inside	8699 AUD pp
Polar Outside	8895 AUD pp
Arctic Superior	9530 AUD pp
Expedition Suite	10980 AUD pp

### 06-Dec-2026 to 20-Dec-2026

Polar Inside	8699 AUD pp
Polar Outside	8895 AUD pp
Arctic Superior	9465 AUD pp
Expedition Suite	10980 AUD pp

### 09-Dec-2026 to 23-Dec-2026

Polar Outside	8992 AUD pp
Arctic Superior	9807 AUD pp
Expedition Suite	10980 AUD pp
Polar Inside	0 pp

### 16-Dec-2026 to 30-Dec-2026

Polar Inside	8699 AUD pp
Polar Outside	8992 AUD pp
Arctic Superior	9530 AUD pp
Expedition Suite	10980 AUD pp

### 20-Dec-2026 to 03-Jan-2027

Polar Outside	9795 AUD pp
Arctic Superior	10895 AUD pp
Expedition Suite	12480 AUD pp
Polar Inside	0 pp

Wild Earth Travel

*Small Ships, Big Adventures*

**0800 945 3327** (within New Zealand) | +64 (0) 3 365 1355 | **1800 107 715** (within Australia)

info@wildearth-travel.com | wildearth-travel.com

# Wild Earth Travel

*Small Ships, Big Adventures*

**wildearth-travel.com**

**info@wildearth-travel.com**

## PRICING

### 11-Jan-2027 to 25-Jan-2027

Polar Outside	9851 AUD pp
Arctic Superior	10828 AUD pp
Expedition Suite	12234 AUD pp
Polar Inside	0 pp

### 14-Jan-2027 to 28-Jan-2027

Polar Inside	9499 AUD pp
Polar Outside	9734 AUD pp
Arctic Superior	10496 AUD pp
Expedition Suite	12234 AUD pp

### 22-Jan-2027 to 05-Feb-2027

Polar Outside	10075 AUD pp
Arctic Superior	11120 AUD pp
Expedition Suite	12625 AUD pp
Polar Inside	0 pp

### 30-Jan-2027 to 13-Feb-2027

Polar Inside	9699 AUD pp
Polar Outside	9950 AUD pp
Arctic Superior	10681 AUD pp
Expedition Suite	12625 AUD pp

### 02-Feb-2027 to 16-Feb-2027

Polar Outside	10195 AUD pp
Arctic Superior	11295 AUD pp
Expedition Suite	12880 AUD pp
Polar Inside	0 pp

### 09-Feb-2027 to 23-Feb-2027

Polar Outside	10063 AUD pp
Arctic Superior	10921 AUD pp
Expedition Suite	12880 AUD pp
Polar Inside	0 pp

### 13-Feb-2027 to 27-Feb-2027

Polar Outside	10195 AUD pp
Arctic Superior	11295 AUD pp
Expedition Suite	12880 AUD pp
Polar Inside	0 pp

### 27-Feb-2027 to 13-Mar-2027

Polar Inside	9799 AUD pp
Polar Outside	10063 AUD pp
Arctic Superior	10921 AUD pp
Expedition Suite	12880 AUD pp

### 04-Mar-2027 to 18-Mar-2027

Polar Inside	9899 AUD pp
Polar Outside	10174 AUD pp
Arctic Superior	10977 AUD pp
Expedition Suite	13111 AUD pp



# Wild Earth Travel

*Small Ships, Big Adventures*

**wildearth-travel.com**

**info@wildearth-travel.com**

## PRICING

### 07-Mar-2027 to 21-Mar-2027

Polar Outside	10312 AUD pp
Arctic Superior	11459 AUD pp
Polar Inside	0 pp

### 10-Mar-2027 to 24-Mar-2027

Polar Inside	9899 AUD pp
Polar Outside	10174 AUD pp
Arctic Superior	11069 AUD pp
Expedition Suite	13111 AUD pp

### 29-Mar-2027 to 12-Apr-2027

Polar Outside	10312 AUD pp
Arctic Superior	11459 AUD pp
Expedition Suite	13111 AUD pp
Polar Inside	0 pp

### 01-Apr-2027 to 15-Apr-2027

Polar Inside	9899 AUD pp
Polar Outside	10174 AUD pp
Arctic Superior	11069 AUD pp
Expedition Suite	13111 AUD pp



# Wild Earth Travel

*Small Ships, Big Adventures*



**wildearth-travel.com**

**info@wildearth-travel.com**

## NORTHERN LIGHTS PROMISE

Northern Lights Promise: If the Northern Lights are not recorded during your Follow The Lights tour, including land component, we'll offer a free northbound or southbound voyage. T&Cs; apply.



Wild Earth Travel

*Small Ships, Big Adventures*

**0800 945 3327** (within New Zealand) | +64 (0) 3 365 1355 | **1800 107 715** (within Australia)

info@wildearth-travel.com | **wildearth-travel.com**