

Wild Earth Travel

Small Ships, Big Adventures

wildearth-travel.com

info@wildearth-travel.com

FOLLOW THE NORTHERN LIGHTS — NORWAY TO FINLAND

Your fully escorted small group tour begins from Norway's capital city, Oslo. During your journey you'll ride one of the world's most famous trains, the Flam Railway, before joining The Coastal Express northbound voyage. Visit charming hamlets, sail through picturesque fjords and hopefully see the magnificent Northern Lights on this journey up into Arctic Norway.

From Kirkenes in Norway's far north, you'll then head south into Finnish Lapland and enjoy gazing up at the night sky inside your glass igloo. Then discover Rovaniemi, the official home town of Santa Claus.



ITINERARY

DAY 1 Arrive in Oslo *

Oslo

Wild Earth Travel

Small Ships, Big Adventures

0800 945 3327 (within New Zealand) | +64 (0) 3 365 1355 | **1800 107 715** (within Australia)

info@wildearth-travel.com | wildearth-travel.com

Wild Earth Travel

Small Ships, Big Adventures



wildearth-travel.com

info@wildearth-travel.com

Welcome to Norway! First stop: Norway's thriving capital, Oslo. The city has a sheltered position deep inside Oslofjord and is surrounded by glistening lakes.

Arrive in Oslo and make your own way to your hotel. The day is spent at your leisure, exploring the many charms the cosmopolitan capital has to offer.

Why not make your way to the city centre, taking snaps of the architecturally distinct Radhuset town hall, Royal Palace, and Oslo Cathedral.

Along the waterfront, there's Aker Brygge, a popular area to eat out at, the imposing Akershus Fortress, and the gleaming new buildings around Bjørvika waterfront. The latter is where you'll find modern attractions such as the landmark new Edvard Munch museum.

In the evening, meet the rest of your tour group and your guide at a welcome dinner. Overnight in Oslo.

DAY 2 Discover Norway's capital *

Oslo

After breakfast, we'll go on an Oslo grand city tour that may include some of the attractions you might have had time to see yourself on your first day but also a few sights located further away.

The Oslo Opera House is perhaps the capital's most iconic building, resembling a gleaming glacier floating in the water. Wander along its clean lines, admire the dramatic angles, and marvel at the white marble that covers its exterior.

Vigeland Sculpture Park is located at the centre of splendid Frogner Park. There, you'll find more than 200 visually striking sculptures in bronze, granite, and cast iron by prolific Norwegian artist Gustav Vigeland. The highlight of the sculptures is the monolith that rises several metres high.

Further north from Vigeland, just outside of Oslo, is Holmenkollen Ski Jump. You won't be doing any jumping yourself, but the impressive building enjoys panoramic views over the city, lakes, and fjord. Beneath the ski jump is also the world's oldest ski museum featuring 2,500 pairs of skis and 4,000 years

of skiing history.

After the tour, you'll return to your hotel in Oslo to spend the night.

DAY 3 Norway In a Nutshell *

Flam

After breakfast, we take the train from Oslo to Myrdal station over 850 metres high in the mountains. This is the boarding point for the Flam Mountain Railway.

The vintage train will weave its way down from the mountains and into the valley towards the village of Flam. The scenic journey takes about an hour and includes a brief stop at Kjosfossen Waterfall for you to take photos. The small power station on the waterfall is actually what powers the Flam Mountain Railway.

We'll then arrive in the village of Flam where you'll spend the night at a hotel. You can visit Flam Railway Museum to learn more about the history and the engineering that brought about the railway. Enjoy your included dinner at the hotel tonight.

DAY 4 Trainride to Bergen *

Bergen - gateway to the fjords

Following breakfast and checking out of your hotel, it's time to enjoy a two-hour boat cruise of Aurlandsfjord and narrow UNESCO-listed Naerøydalen, ending at Gudvangen. A short bus ride through Naerøydalen valley, usually fringed by waterfalls, leads us to the village of Voss where you will catch the train to Bergen, a beautiful city on the west coast of Norway.

Check in to your hotel in Bergen before heading out to explore Norway's third largest city at your leisure. One recommendation is to take the Fløibanen funicular to the top of nearby Mount Fløyen to enjoy views of Bergen and the surrounding mountains.

Wild Earth Travel

Small Ships, Big Adventures

0800 945 3327 (within New Zealand) | +64 (0) 3 365 1355 | **1800 107 715** (within Australia)

info@wildearth-travel.com | **wildearth-travel.com**

Wild Earth Travel

Small Ships, Big Adventures

wildearth-travel.com

info@wildearth-travel.com

DAY 5 Gateway to the Fjords *

Bergen - gateway to the fjords

After a relaxing morning we take a walking tour of Bergen, including St Mary's Church, Hakon's Hall and the UNESCO World Heritage listed Bryggen district. Bryggen is made up of a colourful age-old wooden wharves which now house boutique shops selling handicrafts, art, and souvenirs.

Across the cobblestone street from Bryggen is the Fish Market, a place of sights, sounds, and smells. Freshly caught seafood is cooked on the spot here and served to salivating visitors.

We'll then head to Troidhaugen, the home of Norway's most famous composer, Edvard Grieg. The tour ends at Bergen pier, where we can relax in our exclusive guest lounge before boarding our Coastal Express ship for our voyage along Norway's beautiful coast.

DAY 6 Iconic Architecture *

Ålesund

Enjoy early morning in the breathtaking Nordfjord near Torvik. We then sail past West Cape for our approach to Ålesund. You'll have most of the day to explore this picturesque town.

Ålesund is renowned for its beautiful Art Nouveau architecture. Enjoy wandering around pastel-coloured buildings, picking up details such as semi-circular windows and charming rounded fairy-tale-like towers.

For a lovely panorama over the town, head up to Mount Askla. There's also Atlanterhavsparken, one of Northern Europe's largest saltwater aquariums.

The last port of the day is Molde which has an amazing view of 222 mountain peaks across the fjord, called 'the Molde Panorama'.

DAY 7 City of Kings and Palaces *

Trondheim - Norway's capital of technology

We arrive early in the morning at Trondheim, with plenty of time to explore Norway's first capital either on your own or on an optional excursion.

Founded by Viking king Olav Tryggvason in 997, Trondheim today is Norway's third largest city and a mix of historic buildings and a vibrant student population.

A must-see site of the city is Nidaros Cathedral, nicknamed "Norway's Notre Dame" for its Gothic style and considered the most sacred building in all of Norway.

Nearby, the old city bridge Gamle Bybro sits over Nid River, marking the entrance to the old Hanseatic district of Baklandet. The neighbourhood's colourful wooden wharves propped up on stilts by the river's edge now house a variety of eateries. Up from Baklandet is Kristiansten Fort which offers beautiful views.

In the afternoon, the ship sails northwest, passing the ochre-coloured Kjeungskjaer Lighthouse towards charming Rørvik.

DAY 8 Into the Arctic *

Bodø

We cross the Arctic Circle early in the morning, beginning your Arctic tour of Norway. We mark the moment with a traditional ceremony that's sure to wake you up!

Above the Arctic Circle in autumn, winter, and spring, your chances of seeing the Northern Lights greatly improve.

At 10am, we call into Ømes, near to Norway's second-largest glacier, Svartisen. We then sail to Bodø, the second-largest city in Northern Norway, overlooked by the Børvass peaks.

Wild Earth Travel

Small Ships, Big Adventures

0800 945 3327 (within New Zealand) | +64 (0) 3 365 1355 | **1800 107 715** (within Australia)

info@wildearth-travel.com | **wildearth-travel.com**

Wild Earth Travel

Small Ships, Big Adventures



wildearth-travel.com

info@wildearth-travel.com

That afternoon, the ship enters the Lofoten archipelago. The 1,000 metre-high Lofoten Wall is a stunning sight stretching for miles on the horizon.

Stamsund is home to one of the largest fishing fleets in the islands, busy catching Arctic cod called skrei which swim from the Barents Sea in the north down to nearby Vestfjord to spawn.

Come evening, when you see rows of traditional fisherman's huts on stilts, known as rorbuer, you've arrived in the pretty harbour of Svolvær, the main town of the Lofoten Islands.

DAY 9 Capital of the Arctic *

Tromsø - gateway to the Arctic

We dock into Harstad just after 7am. You can go for a peaceful early morning stroll around town.

The ship will then continue to Finnsnes which connects the beautiful island of Senja via the impressive Gisund Bridge.

We then sail to the historic Arctic exploration capital of Tromsø where you'll have four hours to explore the city or join an optional excursion.

Along the waterfront you'll find Polaria, a centre exhibiting environmental research in the Arctic with a small aquarium. Take your pick from the many shops and restaurants in the city centre, including Mack Brewery and favourite local watering hole Ølhallen pub. There are also cafes offering delicious cinnamon buns where baristas create innovative coffee art. Across the fjord from where the ship docks, you should be able to see the iconic Arctic Cathedral with its beautiful stained-glass mosaic.

Leaving Tromsø in the early evening, we head north for the trading post of Skjervøy, founded in 1622. On our way, we'll pass the Lyngen Alps which rise majestically from the sea.

DAY 10 Norway's Northern Frontier *

Honningsvåg - gateway to the North Cape

The ship makes early morning stops in the town of Hammerfest and at Havøysund before arriving at Honningsvåg mid-morning.

This is the portal to the North Cape where a globe monument marks the top of continental Europe. An optional excursion will take you to North Cape from Honningsvåg by bus, passing herds of reindeer on the way, depending on the season.

The ship continues north. Near the entrance of Kjøllefjord village, look out for the striking, building-like rock formation Finnkirka, an ancient sacrificial site once used by the indigenous Sami.

We reach Mehamn, in the evening. If visiting in the months of February and March, you might spot tons of cod drying on outdoor wooden racks called hjell, mainly destined for export.

The ship then sets off for Berlevåg. On the way, we pass the tall Slettnes Lighthouse, the northernmost mainland lighthouse on Earth.

DAY 11 The Sámi Capital *

Kirkenes - right on the border, Saariselkä

We'll arrive at Vardø in the morning, and we'll continue south towards our next port, Kirkenes. You'll be treated to dramatic coastal vistas as we approach the shore. Here, we leave our ship behind as we continue our journey south toward Finland on land.

We'll board a coach and enjoy a scenic drive through the town of Kirkenes, and after crossing the border into Finland, we'll begin heading south through Lapland. We'll stop at Inari, a village in Finland's largest municipality.

The area is famous for its large Sami population and is seen as the centre of Finnish Sami culture. At the newly renovated Siida Sami museum, you can see exhibits and artefacts that document the rich culture of the Finnish Sami. We will enjoy lunch in a local restaurant before continuing to Saariselkä, a small skiing village in the middle of the Finnish Lapland wilderness.

Wild Earth Travel

Small Ships, Big Adventures

0800 945 3327 (within New Zealand) | +64 (0) 3 365 1355 | **1800 107 715** (within Australia)

info@wildearth-travel.com | **wildearth-travel.com**

Wild Earth Travel

Small Ships, Big Adventures



wildearth-travel.com

info@wildearth-travel.com

After a day of travelling, learning, and exploring, you'll spend your first night in Finland.

DAY 12 Reindeer Safari *

Saariselka

Waking up in Saariselka, you have another day in Finland's winter wonderland to look forward to.

Today we have a day at leisure to explore the small village, or why not try the toboggan near the hotel, or one of the many optional excursions available.

This evening enjoy a Reindeer Safari, with the chance of experiencing the Northern Lights. A short transfer to a local reindeer farm and here you have the opportunity to get to know a local Sami family. During your visit, we will feed the reindeers in the paddock and tell you about reindeer husbandry. Then it's time to take the Lappish lasso and practice, with the guidance of the host, throwing the lasso. You will also have a peek into the dim Lappish hut. In the idyllic old cottage, you can enjoy some coffee and chat more about reindeers and Sami. Weather permitting you will also enjoy a reindeer sleigh ride.

Return to your hotel in the evening, where you'll spend your second night in Saariselka.

DAY 13 Santa Claus Village *

Sinetta, Rovaniemi

Today, we journey towards the commercial centre of Lapland, Rovaniemi. Along the way we will make a short stop to visit the Sodankyla Old Church.

Experience Santa Claus Village, where you can see herds of reindeer and even meet the jolly bearded man himself. This Christmas-themed park will surely bring out your inner child, and if you're lucky, seeing the Northern Lights dancing above will make your visit even more special.

In the evening, you'll check into an Arctic snowhotel in Sinetta, where you can unwind and enjoy the hotel's spa and sauna facilities. Tonight we will enjoy dinner at the hotel before you spend the night in a toasty glass igloo, looking out for the Aurora through the 360 degree glass roof.

DAY 14 Canine Companions *

Rovaniemi

Today we will transfer to your hotel in Rovaniemi. This Arctic city has an intriguing history, having grown to prominence in the 19th century due to the Lapland gold rush. After extensive destruction during World War II, the city had to be rebuilt, and its footprint was redesigned in the shape of a reindeer's head.

Besides reindeer, another iconic Lapland animal is the husky. In the afternoon, you'll take a tour of a husky dog kennel and meet its friendly, furry residents. Enjoy lunch at the kennel. Learn about the long relationship these dogs have with the local people, and find out how they're reared to become as fit and as hardy as they are.

After spending some time with the dogs, enjoy a thrilling husky-drawn cart or sled ride through the Lapland wilderness. Once it's over, you can enjoy a snack and a hot drink around the roaring fire.

DAY 15 Capital of Lapland *

Rovaniemi

After breakfast you have a day to yourself to explore more of Rovaniemi. Your tour guide can recommend a range of exciting additional excursions or things to see and do in the area.

Maybe make a visit to Jatankynttilä bridge to take photos of Finland's first suspension bridge. It stands prominently over Kemijoki river with the lamps at the top of its two pillars resembling glowing braziers.

Wild Earth Travel

Small Ships, Big Adventures

0800 945 3327 (within New Zealand) | +64 (0) 3 365 1355 | **1800 107 715** (within Australia)

info@wildearth-travel.com | **wildearth-travel.com**

Wild Earth Travel

Small Ships, Big Adventures

wildearth-travel.com

info@wildearth-travel.com

You'll also not want to miss the Aalto Centre, a complex of public buildings designed by famous Finnish modernist architect Alvar Aalto. Each of the three buildings is inspired by Finnish culture and nature. Even the five arterial roads are arranged in the shape of a reindeer's antlers.

There's also the forest-themed Pilke Science Centre and Korundi House of Culture to lose yourself in. Similarly, Ranua Zoo is home to various Arctic fauna, but all bow in respect to the resident polar bears and Finnish brown bears.

DAY 16 Finland's Capital *

Helsinki

Today, we leave the Rovaniemi and travel by train to Helsinki, Finland's capital. Widely regarded as one of the world's best cities to live in, Helsinki is vibrant and colourful, and offers a delicate balance of historic architecture and contemporary living. The city is also known for its incredible natural scenery, with countless nature trails nearby.

After a late afternoon arrival, spend the rest of the day exploring the city and discovering the many hidden gems dotted around the centre. With a wide range of bars, restaurants and cafes, Helsinki has something to satisfy every taste.

DAY 17 The Adventure Ends *

Helsinki

From the far south of Norway up to the northernmost point, then down through Finnish Lapland - you've been on quite the journey! You've travelled through the Polar Night over sea and land across countries, with the Northern Lights making a pleasant appearance at times.

Today marks the end of your journey, but it doesn't truly finish here. The memories you've collected throughout your time with us will remain with you

for years to come. You'll also likely be going home with plenty of photos from various activities and places that you can share with family and friends.

After breakfast at the hotel, say your goodbyes to the crew and your fellow travellers. We thank you for spending this time with us, and we hope to see you again soon for another adventure.

Please note: *

The day-by-day programme will give you some ideas about what you can see during your voyage, but bear in mind that this itinerary is just an indication. After all, this is a sailing where the elements rule and weather conditions might vary.

Wild Earth Travel

Small Ships, Big Adventures

0800 945 3327 (within New Zealand) | +64 (0) 3 365 1355 | **1800 107 715** (within Australia)

info@wildearth-travel.com | **wildearth-travel.com**

Wild Earth Travel

Small Ships, Big Adventures

wildearth-travel.com

info@wildearth-travel.com

YOUR SHIP: HURTIGRUTEN SHIPS

YOUR SHIP:

Hurtigruten Ships

VESSEL TYPE:

LENGTH:

PASSENGER CAPACITY:

BUILT/REFURBISHED:

Since 1893, the Hurtigruten ships have been a hallmark of the Norwegian coast. Today, our ships sail to the Arctic and Antarctica, and many destinations in between. On each ship you will find modern facilities carefully blended with true character.

MS Fridtjof Nansen

MS Fridtjof Nansen is the latest addition to Hurtigruten's fleet of custom built ships - and the next generation expedition ship. She will explore some of the most spectacular corners of the globe. Featuring Hurtigruten's revolutionary battery hybrid powered propulsion system, MS Fridtjof Nansen will be a near identical twin to her sister ship MS Roald Amundsen. Combining state of the art technology and premium on board experience with Hurtigruten's 125 years of experience and unparalleled destinations, the two Norwegian built ships introduces the next generation of adventure travel.

MS Fram

The original Fram was the most famous explorer ship of its time, and the achievements of her expeditions are unparalleled. MS Fram brings on the heritage of the original Fram, using the most advanced technology to make her exceptionally well suited for expedition voyages in Polar Regions.

MS Kong Harald

Norway's reigning monarch, a seasoned sailor, lends his name to this remarkable vessel. MS Kong Harald was refurbished in 2016 and now features a modern, Arctic-inspired interior. On board are three different restaurants, the Multe bakery and ice cream bar, a sauna and fitness room. Out on deck you can enjoy the view from one of our two hot tubs. There is a comfortable bar at the front of the ship where you can enjoy a nice traditional drink. The vessel also has a large compass area where you find the reception, the Expedition Team, conference room and shop. The top deck of the boat features a sun deck, observation saloon and panorama lounge, all of which provide splendid views of spectacular coastal scenery.

MS Maud

MS Maud is designed to take you on an expedition of the Norwegian coast in maximum comfort, equipped for a sustainable and memorable expedition. MS Maud, the current MS Trollfjord, is named after one of the most famous polar vessels of all time, Roald Amundsen's "Maud" from 1917. The original "Maud" got her name from the first Queen of modern-day Norway. She also had her namesake in Hurtigruten's 1925 flagship DS Dronning Maud ("DS Queen Maud"). Today's MS Maud is an ice class 1C ship equipped with advanced technology that makes her exceptionally well-suited for expedition cruises in Norway.

MS Nordkapp

MS Nordkapp is named after the northernmost point on mainland Europe: North Cape (71°N) - one of the geographical

Wild Earth Travel

Small Ships, Big Adventures

0800 945 3327 (within New Zealand) | +64 (0) 3 365 1355 | **1800 107 715** (within Australia)

info@wildearth-travel.com | **wildearth-travel.com**

Wild Earth Travel

Small Ships, Big Adventures



wildearth-travel.com

info@wildearth-travel.com

highpoints you can visit on a Hurtigruten voyage. MS Nordkapp was refurbished in 2016 and now features a modern, Arctic-inspired interior. On board are three different restaurants, a Multe bakery and ice cream bar, a sauna and fitness room. Out on deck you can enjoy the view from one of our two hot tubs. We also have a cosy bar at the front of the ship where you can enjoy a nice traditional drink. The ship additionally has a large compass area with reception, a tour guide, conference room and shop. MS Nordkapp was christened by Norway's Queen Sonja in 1996 and her maiden voyage was to the Shetland Islands. The ship started sailing the Norwegian coast in April 1996. She has also sailed in Antarctica. Since 2007, the vessel has been part of Hurtigruten's fleet of ships dedicated to sailing the Norwegian coastline.

MS Nordlys

Both the name and the interior design of this modern expedition ship are inspired by the spectacular Northern Lights (Aurora Borealis). The art, decor and colours employed aboard this ship are all inspired by the northern lights. The delicate aesthetic creates a distinct and unique on-board ambience. Passengers are invited to relax after a long day experiencing Hurtigruten's various excursions and activities in comfy reclining chairs in the one of the ship's lounges. In May 2019 MS Nordlys was refurbished. All cabins got a makeover, while new cabin grades were added. The upgrade saw a number of new features being added to the ship.

MS Nordstjernen

MS Nordstjernen is named after the North Star or Stella Polaris, famous for helping seafarers find their way back home and the Vikings to navigate the north. The ship was built for the Coastal Voyage fleet in 1956 and extensively modernised in 2000 for exclusive Arctic sailing. Today she takes explorers on adventures

in the waters around Spitsbergen. Despite modernisation, she still retains the aura of an old Atlantic ship, restored to her former splendour with new brass, classic wooden interiors and all her original art. Out on deck you come extra close to the untouched nature of the Polar Arctic and with roofs over a lot of the deck space you can enjoy being outside, even in rough weather. MS Nordstjernen is equipped with a dining room and bar, a cafe, a panorama lounge and a library. Inside you'll find cosy interior and exterior cabins, the majority of which have upper and lower berths. All rooms and deck surfaces exhibit that old, beautiful wood.

MS Nordnorge

MS Nordnorge is aptly named for northern Norway, most of which lies above the Arctic Circle. MS Nordnorge was refurbished in 2016 and now features a modern, Arctic-inspired interior. On board are three different restaurants, the Multe bakery and ice cream bar, a sauna and fitness room. Out on deck you can enjoy the view from one of our two hot tubs. We have a comfortable bar at the front of the ship where you can enjoy a nice traditional drink. The vessel also has a large compass area where you find the reception, a tour guide, conference room and shop.

MS Polarlys

Polarlys is Norwegian for 'polar light', and refers to the natural Arctic phenomenon we pursue in winter. MS Polarlys was refurbished in 2016 and now features a modern, Arctic-inspired interior. On board are three different restaurants, the Multe bakery and ice cream bar, a sauna and fitness room. Out on deck you can enjoy the view from one of our two hot tubs. We have a comfortable bar at the front of the ship where you can enjoy a nice traditional drink. The vessel also has a large compass area where you find the reception, the expedition

Wild Earth Travel

Small Ships, Big Adventures

0800 945 3327 (within New Zealand) | +64 (0) 3 365 1355 | **1800 107 715** (within Australia)

info@wildearth-travel.com | **wildearth-travel.com**

Wild Earth Travel

Small Ships, Big Adventures



wildearth-travel.com

info@wildearth-travel.com

team, conference room and shop.

MS Roald Amundsen

In 2019, Hurtigruten added a brand new ship to its fleet: the MS Roald Amundsen. The state of the art vessel features new and environmentally sustainable hybrid technology that will reduce fuel consumption and show the world that hybrid propulsion on large ships is possible. MS Roald Amundsen is the first of two hybrid ships Hurtigruten will add to its fleet over the next few years. Emissions are cut by sailing with electrical propulsion. Innovative sustainable technology reduces fuel consumption and CO2-emissions on the ships by 20 percent. Named after the first man to cross Antarctica and reach the South Pole, MS Roald Amundsen leads the way towards an even more sustainable way of travelling. The ship is specially constructed for voyages in polar waters. It serves as a comfortable basecamp at sea - bringing adventurers from all over the world to the most spectacular destinations in the most sustainable way.

MS Richard With

MS Richard With proudly carries the name of Hurtigruten's founder. It is aptly designed and built in classic maritime style. When Captain Richard With established the Norwegian Coastal Express in 1893, he made an enormous impact on life along the Norwegian coastline. The MS Richard With lives up to that legacy. Relax in the ship's panorama lounges and take in the unforgettable views of remarkable coastal scenery, much of it the same as when the first Hurtigruten boats sailed by more than a century ago. Beautiful art throughout the ship's interior adds contemporary elegance to the vessel's maritime ambience.

MS Spitsbergen

Our new ship, MS Spitsbergen will take you on a voyage beyond

the ordinary. MS Spitsbergen is named after the crown jewel of Arctic Norway - the Svalbard archipelago and its biggest island, Spitsbergen. Hurtigruten has a long history of travelling to Spitsbergen, beginning in 1896 with the 'Sports Route'. MS Spitsbergen cruises along the Norwegian coast from September to May, and becomes part of our global Explorer sailings during the rest of the year. After complete reconstruction, MS Spitsbergen joined the Hurtigruten fleet in 2016. The ship features high technical standards as well as comfortable, modern public areas and cabins. The vessel's fresh Scandinavian design reflects a colour palette derived from the sea. She is modern and environmentally progressive, and we plan further improvements that will reduce emissions and fuel consumption even more. The new ship's maneuverability and optimal size make her quite suitable for exploring polar waters.

MS Trollfjord

The ship is named after the spectacular Trollfjord in Lofoten. Inside she provides spectacular comfort, modern facilities and interior design that makes extensive use of Norwegian wood and stone. The art exhibited aboard ship includes original paintings that were once on board the old Hurtigruten ship, MS Harald Jarl. MS Trollfjord's sun deck and hot tub are on deck 9. The ship's spacious, two-storey panorama lounge is above the bow. Its wall-to-wall windows bathe the lounge in natural light and provide extraordinary views.

MS Vester alen

MS Vesteralen is named after the first Hurtigruten ship that sailed along Norway's rugged coastline in 1893. She is one of our smaller boats and has an intimate on-board atmosphere. MS Vesteralen provides passengers an authentic heritage experience. In its exciting programme you will learn more about the ship's maritime operations, logistics and hotel operations.

Wild Earth Travel

Small Ships, Big Adventures

0800 945 3327 (within New Zealand) | +64 (0) 3 365 1355 | **1800 107 715** (within Australia)

info@wildearth-travel.com | **wildearth-travel.com**

Wild Earth Travel

Small Ships, Big Adventures



wildearth-travel.com

info@wildearth-travel.com

You will get an opportunity to get closer to the Hurtigruten operation and to learn more about the operation along the Norwegian coast.



gian coast.

Wild Earth Travel

Small Ships, Big Adventures

0800 945 3327 (within New Zealand) | +64 (0) 3 365 1355 | **1800 107 715** (within Australia)

info@wildearth-travel.com | **wildearth-travel.com**

Wild Earth Travel

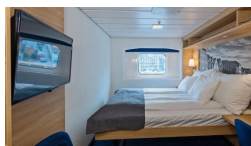
Small Ships, Big Adventures

wildearth-travel.com

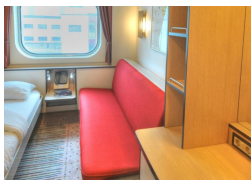
info@wildearth-travel.com

INSIDE YOUR SHIP

Arctic Superior



Arctic Superior. From



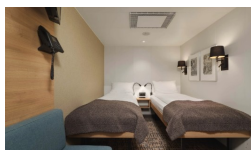
Expedition Suite



Expedition Suite. From



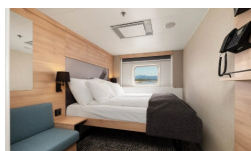
Polar Inside



Polar Inside. From



Polar Outside



Polar Outside. From



Wild Earth Travel

Small Ships, Big Adventures

0800 945 3327 (within New Zealand) | +64 (0) 3 365 1355 | **1800 107 715** (within Australia)

info@wildearth-travel.com | **wildearth-travel.com**

Wild Earth Travel

Small Ships, Big Adventures

wildearth-travel.com

info@wildearth-travel.com

PRICING

26-Sep-2025 to 12-Oct-2025

Polar Inside. From	8479 AUD pp
Polar Outside. From	8984 AUD pp
Arctic Superior. From	10142 AUD pp
Expedition Suite. From	14715 AUD pp

10-Oct-2025 to 16-Oct-2025

Polar Inside	8297 AUD pp
Polar Outside	8968 AUD pp
Arctic Superior	9930 AUD pp
Expedition Suite	14419 AUD pp

24-Oct-2025 to 30-Oct-2025

Polar Inside	8586 AUD pp
Polar Outside	9038 AUD pp
Arctic Superior	10073 AUD pp
Expedition Suite	12436 AUD pp

19-Nov-2025 to 05-Dec-2025

Polar Inside. From	8585 AUD pp
Polar Outside. From	8937 AUD pp
Arctic Superior. From	9744 AUD pp
Expedition Suite. From	12931 AUD pp

17-Dec-2025 to 02-Jan-2026

Polar Inside. From	9784 AUD pp
Polar Outside. From	10136 AUD pp
Arctic Superior. From	10943 AUD pp
Expedition Suite. From	12785 AUD pp

22-Feb-2026 to 28-Feb-2026

Polar Inside	9538 AUD pp
Polar Outside	10181 AUD pp
Arctic Superior	11104 AUD pp
Expedition Suite	13592 AUD pp

26-Mar-2026 to 11-Apr-2026

Polar Inside. From	9497 AUD pp
Polar Outside. From	9993 AUD pp
Arctic Superior. From	11130 AUD pp
Expedition Suite. From	13724 AUD pp

16-Sep-2026 to 02-Oct-2026

Polar Inside	8999 AUD pp
Polar Outside	9409 AUD pp
Arctic Superior	10742 AUD pp
Expedition Suite	16005 AUD pp

17-Sep-2026 to 23-Sep-2026

Polar Inside	8999 AUD pp
Polar Outside	9614 AUD pp
Arctic Superior	11323 AUD pp
Expedition Suite	13783 AUD pp

Wild Earth Travel

Small Ships, Big Adventures

wildearth-travel.com

info@wildearth-travel.com

PRICING

19-Sep-2026 to 25-Sep-2026

Polar Inside	8999 AUD pp
Polar Outside	9409 AUD pp
Arctic Superior	10742 AUD pp
Expedition Suite	13783 AUD pp

20-Sep-2026 to 06-Oct-2026

Polar Inside	8999 AUD pp
Polar Outside	9409 AUD pp
Arctic Superior	10742 AUD pp
Expedition Suite	13783 AUD pp

22-Sep-2026 to 28-Sep-2026

Polar Inside	8999 AUD pp
Arctic Superior	10742 AUD pp
Expedition Suite	13783 AUD pp
Polar Outside	0 pp

24-Sep-2026 to 10-Oct-2026

Polar Inside	8999 AUD pp
Polar Outside	9409 AUD pp
Arctic Superior	10742 AUD pp
Expedition Suite	13783 AUD pp

25-Sep-2026 to 01-Oct-2026

Polar Inside	8999 AUD pp
Polar Outside	9409 AUD pp
Arctic Superior	10605 AUD pp
Expedition Suite	13783 AUD pp

27-Sep-2026 to 13-Oct-2026

Polar Inside	8999 AUD pp
Polar Outside	9409 AUD pp
Arctic Superior	10742 AUD pp
Expedition Suite	16005 AUD pp

28-Sep-2026 to 04-Oct-2026

Polar Inside	8999 AUD pp
Polar Outside	9614 AUD pp
Arctic Superior	11323 AUD pp
Expedition Suite	13783 AUD pp

30-Sep-2026 to 06-Oct-2026

Polar Inside	8999 AUD pp
Polar Outside	9409 AUD pp
Arctic Superior	10742 AUD pp
Expedition Suite	13783 AUD pp

01-Oct-2026 to 17-Oct-2026

Polar Inside	9999 AUD pp
Polar Outside	10402 AUD pp
Arctic Superior	11710 AUD pp
Expedition Suite	14696 AUD pp

Wild Earth Travel

Small Ships, Big Adventures

0800 945 3327 (within New Zealand) | +64 (0) 3 365 1355 | 1800 107 715 (within Australia)

info@wildearth-travel.com | wildearth-travel.com

Wild Earth Travel

Small Ships, Big Adventures

wildearth-travel.com

info@wildearth-travel.com

PRICING

03-Oct-2026 to 09-Oct-2026

Polar Inside	9999 AUD pp
Arctic Superior	11710 AUD pp
Expedition Suite	14696 AUD pp
Polar Outside	0 pp

05-Oct-2026 to 21-Oct-2026

Polar Outside	10402 AUD pp
Arctic Superior	11710 AUD pp
Expedition Suite	14696 AUD pp
Polar Inside	0 pp

06-Oct-2026 to 12-Oct-2026

Polar Inside	9999 AUD pp
Polar Outside	10402 AUD pp
Arctic Superior	11576 AUD pp
Expedition Suite	14696 AUD pp

08-Oct-2026 to 24-Oct-2026

Polar Inside	9999 AUD pp
Polar Outside	10402 AUD pp
Arctic Superior	11710 AUD pp
Expedition Suite	16877 AUD pp

09-Oct-2026 to 15-Oct-2026

Polar Inside	9999 AUD pp
Polar Outside	10603 AUD pp
Arctic Superior	12280 AUD pp
Expedition Suite	14696 AUD pp

12-Oct-2026 to 28-Oct-2026

Polar Inside	9999 AUD pp
Polar Outside	10603 AUD pp
Arctic Superior	11710 AUD pp
Expedition Suite	14696 AUD pp

14-Oct-2026 to 20-Oct-2026

Arctic Superior	11710 AUD pp
Expedition Suite	14696 AUD pp
Polar Outside	0 pp
Polar Inside	0 pp

19-Oct-2026 to 04-Nov-2026

Polar Inside	9800 AUD pp
Polar Outside	10166 AUD pp
Arctic Superior	11358 AUD pp
Expedition Suite	16063 AUD pp

20-Oct-2026 to 26-Oct-2026

Polar Inside	9800 AUD pp
Polar Outside	10350 AUD pp
Arctic Superior	11877 AUD pp
Expedition Suite	14077 AUD pp

Wild Earth Travel

Small Ships, Big Adventures

0800 945 3327 (within New Zealand) | +64 (0) 3 365 1355 | 1800 107 715 (within Australia)

info@wildearth-travel.com | wildearth-travel.com

Wild Earth Travel

Small Ships, Big Adventures

wildearth-travel.com

info@wildearth-travel.com

PRICING

22-Oct-2026 to 28-Oct-2026

Polar Inside	9800 AUD pp
Polar Outside	10166 AUD pp
Arctic Superior	11358 AUD pp
Expedition Suite	14077 AUD pp

23-Oct-2026 to 08-Nov-2026

Polar Inside	9800 AUD pp
Polar Outside	10166 AUD pp
Arctic Superior	11358 AUD pp
Expedition Suite	14077 AUD pp

25-Oct-2026 to 31-Oct-2026

Arctic Superior	11358 AUD pp
Expedition Suite	14077 AUD pp
Polar Outside	0 pp
Polar Inside	0 pp

28-Oct-2026 to 03-Nov-2026

Polar Inside	9800 AUD pp
Polar Outside	10166 AUD pp
Arctic Superior	11236 AUD pp
Expedition Suite	14077 AUD pp

30-Oct-2026 to 15-Nov-2026

Polar Inside	9800 AUD pp
Polar Outside	10166 AUD pp
Arctic Superior	11358 AUD pp
Expedition Suite	16063 AUD pp

31-Oct-2026 to 06-Nov-2026

Polar Inside	9800 AUD pp
Polar Outside	10350 AUD pp
Arctic Superior	11877 AUD pp
Expedition Suite	14077 AUD pp

02-Nov-2026 to 08-Nov-2026

Polar Inside	9599 AUD pp
Polar Outside	9942 AUD pp
Arctic Superior	11055 AUD pp
Expedition Suite	13597 AUD pp

03-Nov-2026 to 09-Nov-2026

Polar Inside	9599 AUD pp
Polar Outside	9942 AUD pp
Arctic Superior	11055 AUD pp
Expedition Suite	13597 AUD pp

05-Nov-2026 to 11-Nov-2026

Polar Inside	9599 AUD pp
Arctic Superior	11055 AUD pp
Expedition Suite	13597 AUD pp
Polar Outside	0 pp

Wild Earth Travel
Small Ships, Big Adventures

0800 945 3327 (within New Zealand) | +64 (0) 3 365 1355 | **1800 107 715** (within Australia)

info@wildearth-travel.com | wildearth-travel.com

Wild Earth Travel

Small Ships, Big Adventures

wildearth-travel.com

info@wildearth-travel.com

PRICING

08-Nov-2026 to 14-Nov-2026

Polar Inside	9599 AUD pp
Polar Outside	9942 AUD pp
Arctic Superior	10941 AUD pp
Expedition Suite	13597 AUD pp

10-Nov-2026 to 26-Nov-2026

Polar Inside	9599 AUD pp
Polar Outside	9942 AUD pp
Arctic Superior	11055 AUD pp
Expedition Suite	15453 AUD pp

14-Nov-2026 to 20-Nov-2026

Polar Inside	9599 AUD pp
Polar Outside	9942 AUD pp
Arctic Superior	11055 AUD pp
Expedition Suite	13597 AUD pp

16-Nov-2026 to 22-Nov-2026

Polar Inside	9599 AUD pp
Arctic Superior	11055 AUD pp
Expedition Suite	13597 AUD pp
Polar Outside	0 pp

19-Nov-2026 to 25-Nov-2026

Polar Inside	9599 AUD pp
Polar Outside	9942 AUD pp
Arctic Superior	10941 AUD pp
Expedition Suite	13597 AUD pp

21-Nov-2026 to 07-Dec-2026

Polar Inside	9899 AUD pp
Polar Outside	10185 AUD pp
Arctic Superior	11113 AUD pp
Expedition Suite	14781 AUD pp

22-Nov-2026 to 28-Nov-2026

Polar Inside	9899 AUD pp
Polar Outside	10327 AUD pp
Arctic Superior	11518 AUD pp
Expedition Suite	13233 AUD pp

24-Nov-2026 to 30-Nov-2026

Polar Inside	9899 AUD pp
Polar Outside	10185 AUD pp
Arctic Superior	11113 AUD pp
Expedition Suite	13233 AUD pp

25-Nov-2026 to 11-Dec-2026

Polar Inside	9899 AUD pp
Polar Outside	10185 AUD pp
Arctic Superior	11113 AUD pp
Expedition Suite	13233 AUD pp

Wild Earth Travel
Small Ships, Big Adventures

0800 945 3327 (within New Zealand) | +64 (0) 3 365 1355 | 1800 107 715 (within Australia)

info@wildearth-travel.com | wildearth-travel.com

Wild Earth Travel

Small Ships, Big Adventures

wildearth-travel.com

info@wildearth-travel.com

PRICING

27-Nov-2026 to 03-Dec-2026

Arctic Superior	11113 AUD pp
Expedition Suite	13233 AUD pp
Polar Outside	0 pp
Polar Inside	0 pp

29-Nov-2026 to 15-Dec-2026

Polar Inside	9899 AUD pp
Polar Outside	10185 AUD pp
Arctic Superior	11113 AUD pp
Expedition Suite	13233 AUD pp

30-Nov-2026 to 06-Dec-2026

Polar Inside	9899 AUD pp
Polar Outside	10185 AUD pp
Arctic Superior	11018 AUD pp
Expedition Suite	13233 AUD pp

02-Dec-2026 to 18-Dec-2026

Polar Inside	9899 AUD pp
Polar Outside	10185 AUD pp
Arctic Superior	11113 AUD pp
Expedition Suite	14781 AUD pp

03-Dec-2026 to 09-Dec-2026

Polar Inside	9899 AUD pp
Polar Outside	10327 AUD pp
Arctic Superior	11518 AUD pp
Expedition Suite	13233 AUD pp

05-Dec-2026 to 11-Dec-2026

Polar Inside	9899 AUD pp
Polar Outside	10185 AUD pp
Arctic Superior	11113 AUD pp
Expedition Suite	13233 AUD pp

06-Dec-2026 to 22-Dec-2026

Polar Inside	9899 AUD pp
Polar Outside	10327 AUD pp
Arctic Superior	11113 AUD pp
Expedition Suite	13233 AUD pp

08-Dec-2026 to 14-Dec-2026

Polar Inside	10499 AUD pp
Arctic Superior	11713 AUD pp
Expedition Suite	13833 AUD pp
Polar Outside	0 pp

10-Dec-2026 to 26-Dec-2026

Polar Inside	10499 AUD pp
Polar Outside	10785 AUD pp
Arctic Superior	11713 AUD pp
Expedition Suite	13833 AUD pp

Wild Earth Travel

Small Ships, Big Adventures

0800 945 3327 (within New Zealand) | +64 (0) 3 365 1355 | **1800 107 715** (within Australia)

info@wildearth-travel.com | wildearth-travel.com

Wild Earth Travel

Small Ships, Big Adventures

wildearth-travel.com

info@wildearth-travel.com

PRICING

11-Dec-2026 to 17-Dec-2026

Polar Inside	10499 AUD pp
Polar Outside	10785 AUD pp
Arctic Superior	11618 AUD pp
Expedition Suite	13833 AUD pp

13-Dec-2026 to 29-Dec-2026

Polar Inside	10499 AUD pp
Polar Outside	10785 AUD pp
Arctic Superior	11713 AUD pp
Expedition Suite	15381 AUD pp

14-Dec-2026 to 20-Dec-2026

Polar Inside	10499 AUD pp
Polar Outside	10927 AUD pp
Arctic Superior	12118 AUD pp
Expedition Suite	13833 AUD pp

16-Dec-2026 to 22-Dec-2026

Polar Inside	10499 AUD pp
Polar Outside	10785 AUD pp
Arctic Superior	11713 AUD pp
Expedition Suite	13833 AUD pp

17-Dec-2026 to 02-Jan-2027

Polar Inside	10499 AUD pp
Polar Outside	10785 AUD pp
Arctic Superior	11713 AUD pp
Expedition Suite	13833 AUD pp

19-Dec-2026 to 25-Dec-2026

Polar Inside	10499 AUD pp
Arctic Superior	11713 AUD pp
Expedition Suite	13833 AUD pp
Polar Outside	0 pp

21-Dec-2026 to 06-Jan-2027

Polar Outside	11185 AUD pp
Arctic Superior	12440 AUD pp
Expedition Suite	15303 AUD pp
Polar Inside	0 pp

24-Dec-2026 to 09-Jan-2027

Polar Inside	10799 AUD pp
Polar Outside	11185 AUD pp
Arctic Superior	12440 AUD pp
Expedition Suite	17395 AUD pp

25-Dec-2026 to 31-Dec-2026

Polar Inside	10799 AUD pp
Polar Outside	11378 AUD pp
Arctic Superior	12987 AUD pp
Expedition Suite	15303 AUD pp

Wild Earth Travel

Small Ships, Big Adventures

wildearth-travel.com

info@wildearth-travel.com

PRICING

27-Dec-2026 to 02-Jan-2027

Polar Inside	10799 AUD pp
Polar Outside	11185 AUD pp
Arctic Superior	12440 AUD pp
Expedition Suite	15303 AUD pp

30-Dec-2026 to 05-Jan-2027

Polar Inside	9599 AUD pp
Arctic Superior	11055 AUD pp
Expedition Suite	13597 AUD pp
Polar Outside	0 pp

01-Jan-2027 to 17-Jan-2027

Polar Outside	9942 AUD pp
Arctic Superior	11055 AUD pp
Expedition Suite	13597 AUD pp
Polar Inside	0 pp

02-Jan-2027 to 08-Jan-2027

Polar Inside	9599 AUD pp
Polar Outside	9942 AUD pp
Arctic Superior	10941 AUD pp
Expedition Suite	13597 AUD pp

04-Jan-2027 to 20-Jan-2027

Polar Inside	9599 AUD pp
Polar Outside	9942 AUD pp
Arctic Superior	11055 AUD pp
Expedition Suite	15453 AUD pp

05-Jan-2027 to 11-Jan-2027

Polar Inside	9599 AUD pp
Polar Outside	10113 AUD pp
Arctic Superior	11541 AUD pp
Expedition Suite	13597 AUD pp

07-Jan-2027 to 13-Jan-2027

Polar Inside	9599 AUD pp
Polar Outside	9942 AUD pp
Arctic Superior	11055 AUD pp
Expedition Suite	13597 AUD pp

08-Jan-2027 to 24-Jan-2027

Polar Inside	9599 AUD pp
Polar Outside	9942 AUD pp
Arctic Superior	11055 AUD pp
Expedition Suite	13597 AUD pp

10-Jan-2027 to 16-Jan-2027

Polar Inside	9599 AUD pp
Arctic Superior	11055 AUD pp
Expedition Suite	13597 AUD pp
Polar Outside	0 pp

Wild Earth Travel

Small Ships, Big Adventures

0800 945 3327 (within New Zealand) | +64 (0) 3 365 1355 | **1800 107 715** (within Australia)

info@wildearth-travel.com | wildearth-travel.com

Wild Earth Travel

Small Ships, Big Adventures

wildearth-travel.com

info@wildearth-travel.com

PRICING

12-Jan-2027 to 28-Jan-2027

Polar Inside	9599 AUD pp
Polar Outside	9942 AUD pp
Arctic Superior	11055 AUD pp
Expedition Suite	13597 AUD pp

13-Jan-2027 to 19-Jan-2027

Polar Inside	9599 AUD pp
Polar Outside	9942 AUD pp
Arctic Superior	10941 AUD pp
Expedition Suite	13597 AUD pp

15-Jan-2027 to 31-Jan-2027

Polar Inside	9800 AUD pp
Polar Outside	10166 AUD pp
Arctic Superior	11358 AUD pp
Expedition Suite	16063 AUD pp

16-Jan-2027 to 22-Jan-2027

Polar Inside	9800 AUD pp
Polar Outside	10350 AUD pp
Arctic Superior	11877 AUD pp
Expedition Suite	14077 AUD pp

19-Jan-2027 to 04-Feb-2027

Polar Inside	9800 AUD pp
Polar Outside	10350 AUD pp
Arctic Superior	11877 AUD pp
Expedition Suite	14077 AUD pp

Polar Inside	9800 AUD pp
Polar Outside	10166 AUD pp
Arctic Superior	11358 AUD pp
Expedition Suite	14077 AUD pp

21-Jan-2027 to 27-Jan-2027

Arctic Superior	11358 AUD pp
Expedition Suite	14077 AUD pp
Polar Outside	0 pp
Polar Inside	0 pp

23-Jan-2027 to 08-Feb-2027

Polar Inside	9800 AUD pp
Polar Outside	10166 AUD pp
Arctic Superior	11358 AUD pp
Expedition Suite	14077 AUD pp

26-Jan-2027 to 11-Feb-2027

Polar Inside	9800 AUD pp
Polar Outside	10166 AUD pp
Arctic Superior	11358 AUD pp
Expedition Suite	16063 AUD pp

27-Jan-2027 to 02-Feb-2027

Polar Inside	9800 AUD pp
Polar Outside	10350 AUD pp
Arctic Superior	11877 AUD pp
Expedition Suite	14077 AUD pp

Wild Earth Travel

Small Ships, Big Adventures

wildearth-travel.com

info@wildearth-travel.com

PRICING

30-Jan-2027 to 15-Feb-2027

Polar Inside	9800 AUD pp
Polar Outside	10166 AUD pp
Arctic Superior	11358 AUD pp
Expedition Suite	14077 AUD pp

01-Feb-2027 to 07-Feb-2027

Arctic Superior	12440 AUD pp
Expedition Suite	15303 AUD pp
Polar Outside	0 pp
Polar Inside	0 pp

03-Feb-2027 to 19-Feb-2027

Polar Outside	11185 AUD pp
Arctic Superior	12440 AUD pp
Expedition Suite	15303 AUD pp
Polar Inside	0 pp

04-Feb-2027 to 10-Feb-2027

Polar Inside	10799 AUD pp
Polar Outside	11185 AUD pp
Arctic Superior	12311 AUD pp
Expedition Suite	15303 AUD pp

06-Feb-2027 to 22-Feb-2027

Polar Inside	10799 AUD pp
Polar Outside	11185 AUD pp
Arctic Superior	12440 AUD pp
Expedition Suite	17395 AUD pp

07-Feb-2027 to 13-Feb-2027

Polar Inside	10799 AUD pp
Polar Outside	11378 AUD pp
Arctic Superior	12987 AUD pp
Expedition Suite	15303 AUD pp

10-Feb-2027 to 26-Feb-2027

Polar Inside	10799 AUD pp
Polar Outside	11185 AUD pp
Arctic Superior	12440 AUD pp
Expedition Suite	15303 AUD pp

12-Feb-2027 to 18-Feb-2027

Arctic Superior	12440 AUD pp
Expedition Suite	15303 AUD pp
Polar Outside	0 pp
Polar Inside	0 pp

14-Feb-2027 to 02-Mar-2027

Polar Inside	10799 AUD pp
Polar Outside	11185 AUD pp
Arctic Superior	12440 AUD pp
Expedition Suite	15303 AUD pp

Wild Earth Travel

Small Ships, Big Adventures

wildearth-travel.com

info@wildearth-travel.com

PRICING

15-Feb-2027 to 21-Feb-2027

Polar Inside	10799 AUD pp
Polar Outside	11185 AUD pp
Arctic Superior	12311 AUD pp
Expedition Suite	15303 AUD pp

17-Feb-2027 to 05-Mar-2027

Polar Inside	10799 AUD pp
Polar Outside	11185 AUD pp
Arctic Superior	12440 AUD pp
Expedition Suite	17395 AUD pp

18-Feb-2027 to 24-Feb-2027

Polar Inside	10799 AUD pp
Polar Outside	11378 AUD pp
Arctic Superior	12987 AUD pp
Expedition Suite	15303 AUD pp

20-Feb-2027 to 26-Feb-2027

Polar Inside	10799 AUD pp
Polar Outside	11185 AUD pp
Arctic Superior	12440 AUD pp
Expedition Suite	15303 AUD pp

21-Feb-2027 to 09-Mar-2027

Polar Inside	10799 AUD pp
Polar Outside	11185 AUD pp
Arctic Superior	12440 AUD pp
Expedition Suite	15303 AUD pp

23-Feb-2027 to 01-Mar-2027

Polar Inside	10799 AUD pp
Arctic Superior	12440 AUD pp
Expedition Suite	15303 AUD pp
Polar Outside	0 pp

25-Feb-2027 to 13-Mar-2027

Polar Inside	10799 AUD pp
Polar Outside	11185 AUD pp
Arctic Superior	12440 AUD pp
Expedition Suite	15303 AUD pp

26-Feb-2027 to 04-Mar-2027

Polar Inside	10799 AUD pp
Polar Outside	11185 AUD pp
Arctic Superior	12311 AUD pp
Expedition Suite	15303 AUD pp

28-Feb-2027 to 16-Mar-2027

Polar Inside	10799 AUD pp
Polar Outside	11185 AUD pp
Arctic Superior	12440 AUD pp
Expedition Suite	17395 AUD pp

Wild Earth Travel
Small Ships, Big Adventures

0800 945 3327 (within New Zealand) | +64 (0) 3 365 1355 | **1800 107 715** (within Australia)

info@wildearth-travel.com | wildearth-travel.com

Wild Earth Travel

Small Ships, Big Adventures

wildearth-travel.com

info@wildearth-travel.com

PRICING

01-Mar-2027 to 07-Mar-2027

Polar Inside	9999 AUD pp
Polar Outside	10603 AUD pp
Arctic Superior	12280 AUD pp
Expedition Suite	14696 AUD pp

03-Mar-2027 to 09-Mar-2027

Polar Inside	9999 AUD pp
Polar Outside	10402 AUD pp
Arctic Superior	11710 AUD pp
Expedition Suite	14696 AUD pp

04-Mar-2027 to 20-Mar-2027

Polar Inside	9999 AUD pp
Polar Outside	10402 AUD pp
Arctic Superior	11710 AUD pp
Expedition Suite	14696 AUD pp

06-Mar-2027 to 12-Mar-2027

Polar Inside	9999 AUD pp
Arctic Superior	11710 AUD pp
Expedition Suite	14696 AUD pp
Polar Outside	0 pp

08-Mar-2027 to 24-Mar-2027

Polar Inside	9999 AUD pp
Polar Outside	10402 AUD pp
Arctic Superior	11710 AUD pp
Expedition Suite	14696 AUD pp

11-Mar-2027 to 27-Mar-2027

Polar Inside	9999 AUD pp
Polar Outside	10402 AUD pp
Arctic Superior	11710 AUD pp
Expedition Suite	16877 AUD pp

12-Mar-2027 to 18-Mar-2027

Polar Inside	9999 AUD pp
Polar Outside	10603 AUD pp
Arctic Superior	12280 AUD pp
Expedition Suite	14696 AUD pp

14-Mar-2027 to 20-Mar-2027

Polar Inside	9999 AUD pp
Polar Outside	10402 AUD pp
Arctic Superior	11710 AUD pp
Expedition Suite	14696 AUD pp

15-Mar-2027 to 31-Mar-2027

Polar Inside	9999 AUD pp
Polar Outside	10402 AUD pp
Arctic Superior	11710 AUD pp
Expedition Suite	14696 AUD pp

Wild Earth Travel

Small Ships, Big Adventures

wildearth-travel.com

info@wildearth-travel.com

PRICING

17-Mar-2027 to 23-Mar-2027

Polar Inside	9999 AUD pp
Arctic Superior	11710 AUD pp
Expedition Suite	14696 AUD pp
Polar Outside	0 pp

22-Mar-2027 to 07-Apr-2027

Polar Inside	9999 AUD pp
Polar Outside	10402 AUD pp
Arctic Superior	11710 AUD pp
Expedition Suite	16877 AUD pp

23-Mar-2027 to 29-Mar-2027

Polar Inside	9999 AUD pp
Polar Outside	10603 AUD pp
Arctic Superior	12280 AUD pp
Expedition Suite	14696 AUD pp

25-Mar-2027 to 31-Mar-2027

Polar Inside	9999 AUD pp
Polar Outside	10402 AUD pp
Arctic Superior	11710 AUD pp
Expedition Suite	14696 AUD pp

26-Mar-2027 to 01-Apr-2027

Polar Inside	9999 AUD pp
Polar Outside	10402 AUD pp
Arctic Superior	11710 AUD pp
Expedition Suite	14696 AUD pp

Polar Inside	9999 AUD pp
Polar Outside	10402 AUD pp
Arctic Superior	11710 AUD pp
Expedition Suite	14696 AUD pp

Wild Earth Travel
Small Ships, Big Adventures

0800 945 3327 (within New Zealand) | +64 (0) 3 365 1355 | **1800 107 715** (within Australia)

info@wildearth-travel.com | wildearth-travel.com



Wild Earth Travel

Small Ships, Big Adventures



wildearth-travel.com

info@wildearth-travel.com

NORTHERN LIGHTS PROMISE

Northern Lights Promise: If the Northern Lights are not recorded during your Follow The Lights tour, including land component, we'll offer a free northbound or southbound voyage. T&Cs; apply.

Wild Earth Travel

Small Ships, Big Adventures

0800 945 3327 (within New Zealand) | +64 (0) 3 365 1355 | **1800 107 715** (within Australia)

info@wildearth-travel.com | **wildearth-travel.com**