



Wild Earth Travel

Small Ships, Big Adventures

wildearth-travel.com

info@wildearth-travel.com

FETHIYE TO BODRUM TURKEY GULET CRUISE

Departing from Fethiye & finishing in Bodrum this cruise is a fantastic way to explore the stunning stretch of coastline it provides opportunities to experience the sights otherwise not so easily accessed. This cruise includes stops at historic sites and charming towns, allowing you to immerse yourself in Turkish culture and history. We will visit Knidos, Datca, Cleopatra's baths, Bozukkale and Selimiye amongst others

You can enjoy a variety of activities such as swimming, snorkeling, kayaking, and hiking, while also relaxing on the deck with beautiful views. Whether you decide to explore or stay aboard and just relax. Our gulet cruises are very relaxed and informal, and provide opportunities for a range of activities, and you are free to choose between them.

This area is renowned for its stunning natural beauty, including secluded bays, crystal-clear turquoise waters, and picturesque harbours. It's a popular destination for gulet cruises due to its combination of historical sites, charming seaside villages, and opportunities for swimming, snorkeling, and relaxation.

ITINERARY

Day 1 - Fethiye - Cleopatra Baths

At 4:00 pm guests are checked in and welcomed onboard the gulet that will be their home for the next week. We will then cruise to Tersane Island, once a famous Ottoman port known for its boat building. Admire the Byzantine ruins along the shore or swim with the view of abandoned Ottoman Greek houses. After a swim, we continue to Cleopatra Baths (sunken monastery) Bay to snorkel around the sunken Roman baths. We will stay overnight in Batik Hamam or a nearby bay.

Day 2 - Cleopatra Baths - Ekincik Bay

Today we cruise to Ekincik with a stop for a not-to-be-missed tour of an ancient Lycian city - one of the highlights of a Blue Cruise. Here you can also board a local riverboat and explore the channels of reeds in the protected Dalyan Delta wetlands.

Day 3 - Ekincik Bay - Bozukkale

We will start cruising early today and head for Serce Bay to swim and relax in the crystal-clear waters that are perfect for snorkelling. After a relaxing lunch, we will cruise to Bozukkale (ancient Loryma) for the evening, with an optional walk to visit the magnificent Rhodian shore fort guarding the old harbour.

Day 4- Bozukkale - Selimiye

We will cruise to the secluded Dirsek Bay, where you can walk along ancient trails over the hillsides and admire the view of the bay's turquoise waters. We will pass Byzantine monasteries and fortresses on the way to the Gulf of Hisaronu. We will stop for lunch in a bay then continue to Selimiye village for the evening. Here you can enjoy a drink at one of the small quayside restaurants (lokantas).

Day 5 - Selimiye - Datca

Wild Earth Travel

Small Ships, Big Adventures

0800 945 3327 (within New Zealand) | +64 (0) 3 365 1355 | **1800 107 715** (within Australia)

info@wildearth-travel.com | **wildearth-travel.com**



Wild Earth Travel

Small Ships, Big Adventures

wildearth-travel.com

info@wildearth-travel.com

On the way to Datca there are plenty of swimming opportunities at secluded bays along the coast before getting to Kargi Cove. Datca is a beautiful harbour town with an old village called Eski Datca 8km inland. We will spend the evening in the stunning Datca harbour or in a nearby bay.

Day 6 - Datca - Knidos

This morning, we will leave early to head to Knidos, an ancient Carian city. There will be time to explore the ruins, which are still being excavated. The remains of two harbours, one for commercial and one for military purposes, can still be seen, as well as an impressive amphitheatre. Later we will cruise to Mersincik Bay, with its idyllic inlet and crystal waters.

Day 7 - Knidos -Orak Island/Bodrum

After an early start, we will cross the gulf to Kissebuku Bay, with its enchanting coves and Byzantine ruins hidden among olive trees along the beach. In the afternoon we will cruise to Bodrum Harbour around 4:00 pm for the night

Day 8 - Bodrum

We will have breakfast and check out in Bodrum Harbour at 09:00 am

Please Note:

Itineraries are subject to change

Wild Earth Travel

Small Ships, Big Adventures

0800 945 3327 (within New Zealand) | +64 (0) 3 365 1355 | **1800 107 715** (within Australia)

info@wildearth-travel.com | **wildearth-travel.com**



Wild Earth Travel

Small Ships, Big Adventures

wildearth-travel.com

info@wildearth-travel.com

YOUR SHIP: GULET FORTUNA

YOUR SHIP:

Gulet Fortuna

VESSEL TYPE:

LENGTH:

PASSENGER CAPACITY:

BUILT/REFURBISHED:

Our luxury sailing Gulet M/S Fortuna is handcrafted from mahogany and teak and offers spacious fore, side, and aft decks. Its ancient design is complemented by up-to-date nautical equipment, outdoor dining facilities, cushioned lounging areas, sun mattresses, tenting for shade, plus a variety of other contemporary comforts. The elegant interior features high ceilings and wide corridors. The lounge includes a stocked bar, cushioned lounge, and indoor dining space. Accommodation consists of 7 fully air-conditioned cabins - 1 master cabin with a king-sized bed, 4 cabins with queen-sized beds, and 2 cabins with 2 twin beds each. Each cabin has generous storage space and a roomy en suite bathroom with toilet, shower, marble sink, and vanity. The 4 man crew has separate quarters. Capacity 14 Passengers.

Cuisine on board a gulet is a pleasure. A skilled chef, whose expertise ranges from haute cuisine to regional specialties, guarantees satisfaction for even the most discriminating palate. Seafood is served Mediterranean style, and organically grown fresh herbs, vegetables, and fruits of the season ensure the finest flavor.

Swimming off from or just dreamily floating around the yacht is

certainly one of the most enjoyable experiences of your voyage. Additionally, you can sail, water ski, snorkel, kayak, fish, play board games, and cards, or even go on moderate to strenuous hikes with the captain. Other activities such as parasailing, jet skiing, scuba diving, paragliding, and numerous additional water sports (at extra cost) can also be arranged. Naturally, relaxation is a key part of the voyage, and we offer a library of magazines and books to peruse. A DVD library and DVD player are also on board stocked with film classics, children's, and foreign films. The stereo system has indoor and outdoor speakers and iPod connections for even more personalized listening pleasure.

Shore excursions along the Aegean and Mediterranean coasts are fantastic opportunities to experience sights and sites otherwise not so easily accessed. Turkey's Turquoise Coast offers different cultural and extensive outing choices that easily meet individual or group interests. Traditional sleepy villages, authentic local cuisine, sightseeing, shopping, nightlife, and ancient site explorations. Some trips require vehicles, while others are walks or optional hikes. Guides can also be booked or the captain will ably help you explore on your own. Of course, you may also decide to stay aboard and just relax. One of the best sides to luxury yacht (gulet) voyages is the freedom to enjoy your preferences.

Wild Earth Travel

Small Ships, Big Adventures

0800 945 3327 (within New Zealand) | +64 (0) 3 365 1355 | **1800 107 715** (within Australia)

info@wildearth-travel.com | **wildearth-travel.com**



references.

Wild Earth Travel

Small Ships, Big Adventures

wildearth-travel.com

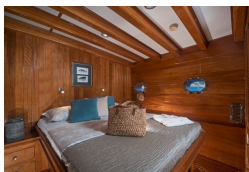
info@wildearth-travel.com

INSIDE YOUR SHIP

Master Cabin



Superior Double Cabin



Superior Twin Cabin



Wild Earth Travel
Small Ships, Big Adventures

0800 945 3327 (within New Zealand) | +64 (0) 3 365 1355 | 1800 107 715 (within Australia)

info@wildearth-travel.com | wildearth-travel.com



Wild Earth Travel

Small Ships, Big Adventures

wildearth-travel.com

info@wildearth-travel.com

PRICING

25-Oct-2025 to 01-Nov-2025

Superior Twin Cabin	1600 EUR pp
----------------------------	--------------------

Superior Double Cabin	1600 EUR pp
------------------------------	--------------------

Master Cabin	2080 GBP pp
---------------------	--------------------

Wild Earth Travel

Small Ships, Big Adventures

0800 945 3327 (within New Zealand) | +64 (0) 3 365 1355 | **1800 107 715** (within Australia)

info@wildearth-travel.com | **wildearth-travel.com**