

Wild Earth Travel

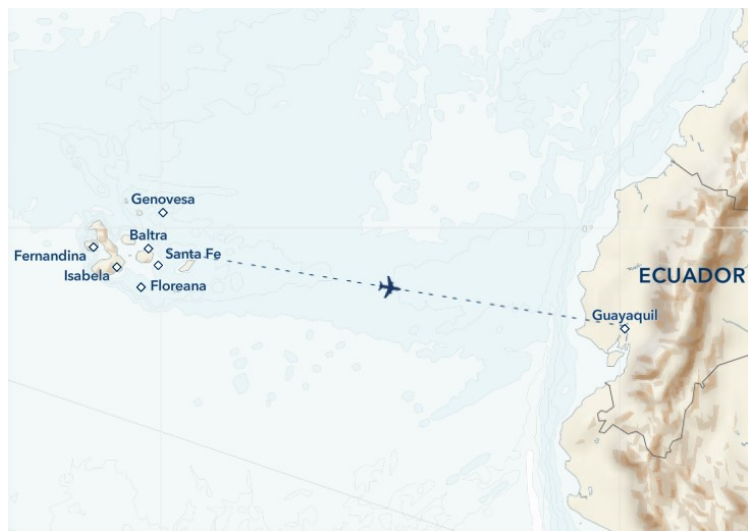
Small Ships, Big Adventures

wildearth-travel.com

info@wildearth-travel.com

EXPLORING GALAPAGOS: ONE WEEK SAILING THE ISLANDS

Zodiac to pristine beaches, kayak or stand-up paddleboard along volcanic shores, explore wildlife on land or under the sea. Experience the Galapagos aboard two elegant and nimble ships, well-equipped for up-close exploration. Perfect for couples, families, and solo travelers. Encounter abundant wildlife--blue-footed boobies, marine iguanas, Darwin's finches, pink flamingos, giant tortoises and more. The wildlife of Galapagos is legendary for being without fear in the presence of humans.



ITINERARY

DAY 1 Guayaquil, Ecuador

We meet you on arrival in Ecuador, either in Quito, Ecuador's capital city in the Andes, or in the coastal city of Guayaquil, for an included transfer to your convenient hotel for an overnight stay. Both cities are well-served by international carriers, and Galapagos flights start and end in Quito with a stop in Guayaquil. Guests in Guayaquil stay at the locally owned Hotel Oro Verde and have the choice of several hotels in Quito, including a convenient airport hotel. You may opt for a pre-voyage extension to Mashpi Reserve in the tropical Andes outside Quito, a biodiversity hotspot. Or choose to reserve additional hotel nights and tours in Quito or Guayaquil.

Arrival Time: Anytime.

Arrival City: Quito or Guayaquil, Ecuador

Wild Earth Travel

Small Ships, Big Adventures

0800 945 3327 (within New Zealand) | +64 (0) 3 365 1355 | **1800 107 715** (within Australia)

info@wildearth-travel.com | **wildearth-travel.com**



Wild Earth Travel

Small Ships, Big Adventures

wildearth-travel.com

info@wildearth-travel.com

DAY 2 Quito or Guayaquil / Galápagos Islands

In the morning we will fly to the Galapagos and embark the National Geographic Endeavour II. After lunch, our journey begins as we explore the islands and their remarkable wildlife.

Meals Included: Breakfast, Lunch, Dinner

DAYS 3-8 Galápagos Islands

Below are a selection of islands we may visit during our expedition. Itineraries are subject to Galapagos National Park regulations.

North Seymour:

Follow coastal trails past playful Galapagos sea lions on this wildlife-rich central island. Continue inland through a silvery forest of endemic palo santo trees, where frigatebirds nest, blue-footed boobies dance, and where we may also encounter prehistoric-looking land iguanas feeding on cactus.

Isabela:

Cross the Equator at Volcan Ecuador, northernmost of Isabela's six great shield volcanoes. Keep an eye out for whales and dolphins, sea turtles, and the elusive ocean sunfish. Over two days, land in the footsteps of Darwin and Melville, and look for wildlife along the wildly eroded volcanic shore.

Fernandina:

One of the most active oceanic volcanoes in the world, Fernandina is the youngest and most pristine island in Galapagos -- and home to the strange flightless cormorant, Galapagos penguins, and the largest marine iguanas. Hikes ashore lead across impressive recent lava flows.

Española:

See swallow-tailed gulls, Española mockingbirds, Nazca boobies and, seasonally, the world's only population of waved albatross at this bird paradise, also home to vividly colored marine iguanas. Watch sea lions on the white sand beach, and snorkel offshore at Gardner Bay.

Floreana:

Follow a trail past a rose pink-tinted lagoon sometimes frequented by flamingos. Snorkel among sea lions and abundant fish, or cruise along

Champion Islet by Zodiac. Visit the historic mail barrel at Post Office Bay.

Santa Cruz:

Visit Puerto Ayora, the largest town and headquarters of both the Galapagos National Park and Charles Darwin Research Station. See the monument to Lonesome George, and tour the giant tortoise breeding corrals. Witness the giant tortoises roaming in the wild in the lush, green highlands.

Bartolome:

Climb the steps to the summit of this 300-foot volcanic wonderland for stunning views. Explore, swim, and snorkel from the beach. Catch a glimpse of Galapagos penguins, one of the world's rarest.

Santiago:

Explore tide pools and look for fur seals sheltered in quiet grottos of black basalt. Swim, snorkel, kayak, and paddleboard along Santiago's spectacular coast, and explore an enchanting coastal forest where Charles Darwin once walked.

Genovesa:

Sail across the Equator to the remote northern realm of the Galapagos into this flooded caldera, home to over one million seabirds. Visit Prince Philip's Steps at the top of the island. Highlights along the trail are many, from Nazca, red- and blue-footed boobies and frigates, to gulls, owls, fur seals, hammerhead sharks, turtles, and manta rays.

San Cristobal:

Search for red-footed boobies and the endemic mockingbird and lava lizard -- found only on this easternmost island. Walk along the powdery white sand at a gorgeous beach fronted by iconic Kicker Rock. Explore Baquerizo Moreno, where sea lions thrive in the middle of town.

Meals Included: Breakfast, Lunch, Dinner

DAY 9 Galápagos Islands / Disembark / Guayaquil or Quito

Disembark this morning for a return flight to the mainland, where we transfer to Hotel Oro Verde in Guayaquil, and have several options in Quito, including a convenient airport hotel. The afternoon and evening are at your leisure. You may be able to take advantage of overnight flights home. Ask your expedition specialist about Peru, Quito, and other post-voyage options. Many guests upon arrival in Guayaquil continue on a flight to Lima, Peru, for Exploring



Wild Earth Travel

Small Ships, Big Adventures

wildearth-travel.com

info@wildearth-travel.com

Galapagos + Peru's Land of the Inca.

Meals Included: Breakfast

DAY 10 Guayaquil or Quito

After breakfast, transfer to the airport and board flights home, unless you have arranged for additional nights or an extension.

Departure Time: Anytime on day 10, or anytime after 7:00 p.m. local time on day 9.

Departure City: Guayaquil or Quito

Meals Included: Breakfast

Please note:

Itineraries are subject to change.



Wild Earth Travel
Small Ships, Big Adventures

0800 945 3327 (within New Zealand) | +64 (0) 3 365 1355 | **1800 107 715** (within Australia)

info@wildearth-travel.com | **wildearth-travel.com**

Wild Earth Travel

Small Ships, Big Adventures

wildearth-travel.com

info@wildearth-travel.com

YOUR SHIP: NATIONAL GEOGRAPHIC ENDEAVOUR II

YOUR SHIP:	National Geographic Endeavour II
VESSEL TYPE:	Expedition Ship
LENGTH:	73 metres
PASSENGER CAPACITY:	96 guests (in 53 outside cabins)
BUILT/REFURBISHED:	2005; Newly Launched



Purpose-built for expedition travel, National Geographic Endeavour II is a nimble and elegant vessel, perfectly suited for exploring the Galapagos Islands. Accommodating just 96 guests, she offers a relaxed yet immersive experience, with spacious public areas, large windows throughout, and an expansive open-air observation deck ideal for wildlife spotting and stargazing. Her shallow draught allows close access to remote coastlines, creating extraordinary opportunities for up-close discovery.

Aboard Endeavour II, guests enjoy a blend of comfort and adventure. The ship carries a fleet of kayaks, stand-up paddleboards, Zodiacs, and a glass-bottom boat, along with exploration tools like underwater cameras and a video microscope. Public spaces include a lounge and bar for evening Recaps, a library, and an "open bridge" where visitors can observe navigation and chat with the crew. Dining is sociable and unpretentious, with Ecuadorian flavours and options to eat outdoors when weather permits. Whether travelling solo, with family, or as a group, Endeavour II offers an unforgettable basecamp in the enchanted isles.

Wild Earth Travel

Small Ships, Big Adventures

0800 945 3327 (within New Zealand) | +64 (0) 3 365 1355 | **1800 107 715** (within Australia)

info@wildearth-travel.com | **wildearth-travel.com**

Wild Earth Travel

Small Ships, Big Adventures

wildearth-travel.com

info@wildearth-travel.com

INSIDE YOUR SHIP

Observation Deck



Bridge Deck

Category 4
Suite B
Suite C



Lounge Deck

Category 3
Suite A
Category 3 Solo



Upper Deck

Category 1
Category 2
Category 2 Solo



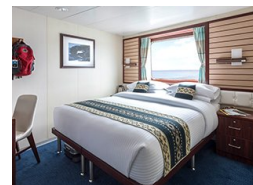
Main Deck



Category 1



Category 1. From



Wild Earth Travel
Small Ships, Big Adventures

0800 945 3327 (within New Zealand) | +64 (0) 3 365 1355 | 1800 107 715 (within Australia)

info@wildearth-travel.com | wildearth-travel.com

Wild Earth Travel

Small Ships, Big Adventures

wildearth-travel.com

info@wildearth-travel.com

PRICING

02-Jan-2026 to 11-Jan-2026

Category 1. From	9200 AUD pp
More Cabin Categories & Prices Available	0 pp

09-Jan-2026 to 18-Jan-2026

Category 1. From	9919 AUD pp
More Cabin Categories & Prices Available	0 pp

16-Jan-2026 to 25-Jan-2026

Category 1. From	8933 AUD pp
More Cabin Categories & Prices Available	0 pp

23-Jan-2026 to 01-Feb-2026

Category 1. From	9919 AUD pp
More Cabin Categories & Prices Available	0 pp

30-Jan-2026 to 08-Feb-2026

Category 1. From	8174 AUD pp
More Cabin Categories & Prices Available	0 pp

06-Feb-2026 to 15-Feb-2026

Category 1. From	8174 AUD pp
More Cabin Categories & Prices Available	0 pp

20-Feb-2026 to 01-Mar-2026

Category 1. From	8174 AUD pp
More Cabin Categories & Prices Available	0 pp

27-Feb-2026 to 08-Mar-2026

Category 1. From	7937 AUD pp
More Cabin Categories & Prices Available	0 pp

06-Mar-2026 to 15-Mar-2026

Category 1. From	10603 AUD pp
More Cabin Categories & Prices Available	0 pp

13-Mar-2026 to 22-Mar-2026

Category 1. From	10054 AUD pp
More Cabin Categories & Prices Available	0 pp

20-Mar-2026 to 29-Mar-2026

Category 1. From	10603 AUD pp
More Cabin Categories & Prices Available	0 pp

27-Mar-2026 to 05-Apr-2026

Category 1. From	9761 AUD pp
More Cabin Categories & Prices Available	0 pp

03-Apr-2026 to 12-Apr-2026



Wild Earth Travel

Small Ships, Big Adventures

wildearth-travel.com

info@wildearth-travel.com

Category 1. From 10923 AUD pp

**More Cabin Categories & Prices
Available**

0 pp

10-Apr-2026 to 19-Apr-2026

Category 1. From 10923 AUD pp

**More Cabin Categories & Prices
Available**

0 pp

17-Apr-2026 to 26-Apr-2026

Category 1. From 11007 AUD pp

**More Cabin Categories & Prices
Available**

0 pp

24-Apr-2026 to 03-May-2026

Category 1. From 11007 AUD pp

**More Cabin Categories & Prices
Available**

0 pp

01-May-2026 to 10-May-2026

Category 1. From 11191 AUD pp

**More Cabin Categories & Prices
Available**

0 pp

08-May-2026 to 17-May-2026

Category 1. From 11191 AUD pp

**More Cabin Categories & Prices
Available**

0 pp

Wild Earth Travel

Small Ships, Big Adventures

wildearth-travel.com

info@wildearth-travel.com

PRICING

15-May-2026 to 24-May-2026

Category 1. From 11191 AUD pp

More Cabin Categories & Prices Available 0 pp

22-May-2026 to 31-May-2026

Category 1. From 11210 AUD pp

More Cabin Categories & Prices Available 0 pp

29-May-2026 to 07-Jun-2026

Category 1. From 11210 AUD pp

More Cabin Categories & Prices Available 0 pp

05-Jun-2026 to 14-Jun-2026

Category 1. From 11379 AUD pp

More Cabin Categories & Prices Available 0 pp

12-Jun-2026 to 21-Jun-2026

Category 1. From 11379 AUD pp

More Cabin Categories & Prices Available 0 pp

19-Jun-2026 to 28-Jun-2026

Category 1. From 11379 AUD pp

More Cabin Categories & Prices Available 0 pp

26-Jun-2026 to 05-Jul-2026

Category 1. From 11379 AUD pp

More Cabin Categories & Prices Available 0 pp

03-Jul-2026 to 12-Jul-2026

Category 1. From 11497 AUD pp

More Cabin Categories & Prices Available 0 pp

10-Jul-2026 to 19-Jul-2026

Category 1. From 11497 AUD pp

More Cabin Categories & Prices Available 0 pp

17-Jul-2026 to 26-Jul-2026

Category 1. From 11497 AUD pp

More Cabin Categories & Prices Available 0 pp

24-Jul-2026 to 02-Aug-2026

Category 1. From 11497 AUD pp

More Cabin Categories & Prices Available 0 pp

31-Jul-2026 to 09-Aug-2026

Category 1. From 11497 AUD pp

More Cabin Categories & Prices Available 0 pp

14-Aug-2026 to 23-Aug-2026

Wild Earth Travel

Small Ships, Big Adventures

0800 945 3327 (within New Zealand) | +64 (0) 3 365 1355 | **1800 107 715** (within Australia)

info@wildearth-travel.com | wildearth-travel.com



Wild Earth Travel

Small Ships, Big Adventures

wildearth-travel.com

info@wildearth-travel.com

Category 1. From 11157 AUD pp

More Cabin Categories & Prices Available 0 pp

21-Aug-2026 to 30-Aug-2026

Category 1. From 11157 AUD pp

More Cabin Categories & Prices Available 0 pp

25-Sep-2026 to 04-Oct-2026

Category 1. From 7939 AUD pp

More Cabin Categories & Prices Available 0 pp

02-Oct-2026 to 11-Oct-2026

Category 1. From 7939 AUD pp

More Cabin Categories & Prices Available 0 pp

09-Oct-2026 to 18-Oct-2026

Category 1. From 7939 AUD pp

More Cabin Categories & Prices Available 0 pp

16-Oct-2026 to 25-Oct-2026

Category 1. From 7939 AUD pp

More Cabin Categories & Prices Available 0 pp

Wild Earth Travel

Small Ships, Big Adventures

wildearth-travel.com

info@wildearth-travel.com

PRICING

23-Oct-2026 to 01-Nov-2026

Category 1. From 7939 AUD pp

More Cabin Categories & Prices Available 0 pp

06-Nov-2026 to 15-Nov-2026

Category 1. From 7939 AUD pp

More Cabin Categories & Prices Available 0 pp

13-Nov-2026 to 22-Nov-2026

Category 1. From 7939 AUD pp

More Cabin Categories & Prices Available 0 pp

20-Nov-2026 to 29-Nov-2026

Category 1. From 7939 AUD pp

More Cabin Categories & Prices Available 0 pp

27-Nov-2026 to 06-Dec-2026

Category 1. From 7939 AUD pp

More Cabin Categories & Prices Available 0 pp

04-Dec-2026 to 13-Dec-2026

Category 1. From 7939 AUD pp

More Cabin Categories & Prices Available 0 pp

04-Dec-2026 to 13-Dec-2026

Category 1 10233 AUD pp

Category 2 12197 AUD pp

Category 4 15129 AUD pp

Category 5 18081 AUD pp

More Cabin Categories & Prices Available 0 pp

11-Dec-2026 to 20-Dec-2026

Category 1. From 7939 AUD pp

More Cabin Categories & Prices Available 0 pp

25-Dec-2026 to 03-Jan-2027

Category 1. From 11384 AUD pp

More Cabin Categories & Prices Available 0 pp

08-Jan-2027 to 17-Jan-2027

Category 1. From 10116 AUD pp

More Cabin Categories & Prices Available 0 pp

15-Jan-2027 to 24-Jan-2027

Category 1. From 10116 AUD pp

More Cabin Categories & Prices Available 0 pp

05-Mar-2027 to 14-Mar-2027

Wild Earth Travel

Small Ships, Big Adventures

0800 945 3327 (within New Zealand) | +64 (0) 3 365 1355 | **1800 107 715** (within Australia)

info@wildearth-travel.com | wildearth-travel.com



Wild Earth Travel

Small Ships, Big Adventures

wildearth-travel.com

info@wildearth-travel.com

Category 1. From	10816 AUD pp
-------------------------	---------------------

More Cabin Categories & Prices Available	0 pp
---	-------------

12-Mar-2027 to 21-Mar-2027

Category 1. From	10816 AUD pp
-------------------------	---------------------

More Cabin Categories & Prices Available	0 pp
---	-------------

19-Mar-2027 to 28-Mar-2027

Category 1. From	10816 AUD pp
-------------------------	---------------------

More Cabin Categories & Prices Available	0 pp
---	-------------



Wild Earth Travel
Small Ships, Big Adventures

0800 945 3327 (within New Zealand) | +64 (0) 3 365 1355 | **1800 107 715** (within Australia)

info@wildearth-travel.com | **wildearth-travel.com**