

Wild Earth Travel

Small Ships, Big Adventures

wildearth-travel.com

info@wildearth-travel.com

EXPLORER EXTENSION CRUISE - FROM HO CHI MINH CITY TO SIEM REAP

Go deeper into the mesmerising culture and life the Mekong river. Every activity onboard the five-star Aqua Mekong brings a fresh perspective of culture and life in Cambodia and Vietnam, so the 4-night itinerary is an ideal addition to any existing travel itinerary of the region. Included are twice-daily excursions (walk, bike, kayak or ride a tuk-tuk) and expert-guided visits to Mekong River's dynamic riverside markets, villages, and holy sites.



ITINERARY

Day 1 VIETNAM Marina My Tho Port - Ho Chi Minh

Our crew warmly welcomes you at our meeting point at Ho Chi Minh City where our air-conditioned coach will transfer you to the Aqua Mekong at My Tho harbor. Settle into your floating luxury retreat and a memorable first night onboard your five-star home on the legendary Mekong.

Day 2 VIETNAM Binh Thanh/Sa Dec - My An Hung

Begin the day learning about traditional mat weaving at Binh Thanh village or visit Sa Dec's vibrant market and the famous house of Marguerite Duras' legendary lover, Mr. Huynh Thuy Le. In the afternoon, stroll through the verdant plantations in the Mekong Delta village of My An Hung, visiting a local's home to savor local fruits, listen to traditional folk song performances by villagers, and participate in a unique unicorn dance.

Wild Earth Travel

Small Ships, Big Adventures

0800 945 3327 (within New Zealand) | +64 (0) 3 365 1355 | 1800 107 715 (within Australia)

info@wildearth-travel.com | wildearth-travel.com



Wild Earth Travel

Small Ships, Big Adventures

wildearth-travel.com

info@wildearth-travel.com

A 10.5-mile (17km) biking option is also available for those who wish to explore the idyllic countryside on wheels.

Day 3 VIETNAM Chau Doc - Vinh Xuong - Ka'om Samnor Border

As the sun rises, travel by skiff along Bassac Canal to the Chau Doc floating market for a real eye-opener, then hop on our van to Long Son Pagoda atop Sam Mountain to meet Buddhist monks who've made this sacred hilltop their home. Take a picturesque 11 mile (18km) bike ride on Long Khanh Island or hop on a rickshaw to visit Tan Chau Market with our chef.

After lunch, relax by the pool, try traditional Khmer massage or learn to cook Mekong inspired dishes while we cross the Cambodia-Vietnam border.

Day 4 CAMBODIA Koh Oknha Tey - Preah Prosop

Sail into the legendary land of the glittering former Khmer empire. At Koh Oknha Tey, watch how Khmer artisans dye and weave krama, a silk scarf loved by locals and a treasured cultural asset that dates back from the Angkor period. Then, cycle the idyllic riverbank past Buddhist temples and traditional thatched and stilted homes and see farmers with white Brahman oxen working the rice fields.

After lunch, board Aqua Mekong's private fleet of launch boats and head towards the tamarind trees of Preah Prosop, a remote village little changed over several lifetimes and home to a startlingly colorful Buddhist temple.

Day 5 CAMBODIA Phnom Penh

See the best of the Cambodian capital on a motorized tuk-tuk, including the Royal Palace, Silver Pagoda and the National Museum of Cambodia, home to the world's largest collection of Khmer art. Based on your preferences, visit the Tuol Sleng Genocide Museum or shop at the Russian Market before disembarking the Aqua Mekong. Airplane transfers are provided if you would like to continue your Cambodian adventure to Siem Reap and its ancient lost city of Angkor Wat. Guests will be fully escorted by our guides in a luxury car transfer to Phnom Penh Airport.

SIEM REAP FLIGHT EXTENSION

During low water season, cruise vessels are not able to travel up to the Tonle Sap Lake due to the water level. Airplane transfers via Cambodian Angkor Air are included in your cruise fare in order to continue your Cambodian adventure with us to Siem Reap and its ancient lost city of Angkor Wat.

Requests for flight changes and/or upgrades are not available. Please kindly inform our Reservations team should you choose to remain in Phnom Penh after disembarkation.

Please Note:

All itineraries are subject to change, due to weather and other conditions.

Wild Earth Travel

Small Ships, Big Adventures

0800 945 3327 (within New Zealand) | +64 (0) 3 365 1355 | **1800 107 715** (within Australia)

info@wildearth-travel.com | **wildearth-travel.com**

Wild Earth Travel

Small Ships, Big Adventures

wildearth-travel.com

info@wildearth-travel.com

YOUR SHIP: AQUA MEKONG

YOUR SHIP:	Aqua Mekong
VESSEL TYPE:	Luxury River Expedition
LENGTH:	62.4 meters / 204 feet
PASSENGER CAPACITY:	40
BUILT/REFURBISHED:	2014

Spacious and indulgent, yet intimate enough to feel entirely exclusive, the Aqua Mekong incorporates relaxed yet refined lounging and dining areas and can accommodate a maximum of 40 guests plus crew. Modern navigation technologies and the highest cruise ship standards as well as our experienced river pilot and crew ensure smooth travel and safety on the water.

The Aqua Mekong has 20 air conditioned Design Suites, each one a generous 30 square meters (320 square feet), eight with balconies and all created entirely of local materials with the relaxed sophistication and contemporary comforts of a five star resort. Floor to ceiling panoramic windows allow guests to gaze upon the Mekong from the pillow top California king size bed that can be converted upon request into two full twin beds. More captivating views await on the plush, roomy daybed placed by the window wall or for our eight balcony accommodations, outside along with a romantic table for two. Those who wish to keep up on the world beyond these enthralling riverbanks will appreciate the flat screen television and complementary high speed wireless internet.

Sunlit indoors and out, the top level Observation Deck aboard the Aqua Mekong has been designed to seamlessly connect

guests with the constantly shifting landscape of floating Vietnamese villages, French colonial church spires and gilded Buddhist stupas along this mighty river, always in the utmost comfort. Whether one chooses to relax in the air conditioned Indoor Lounge, go horizontal under the sun outside at the ship's Outdoor Lounge area or cool off with a plunge in the shimmering pool at the bow side, the Observation Deck ensures that the river always remains in full view.

Guests gravitate to the Indoor Lounge in the mornings for ca phe a, Vietnamese coffee poured over ice with sweet condensed milk, between excursions to swap travelers tales and for daily lectures from the expert local guides.



cal guides.

Wild Earth Travel

Small Ships, Big Adventures

0800 945 3327 (within New Zealand) | +64 (0) 3 365 1355 | **1800 107 715** (within Australia)

info@wildearth-travel.com | wildearth-travel.com

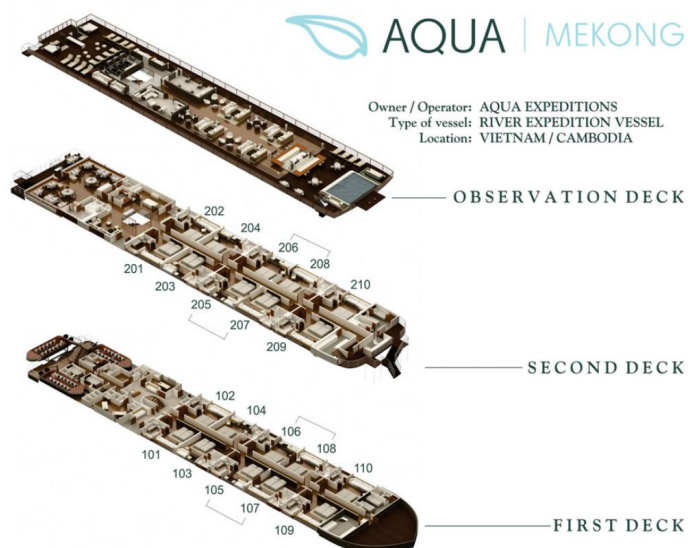
Wild Earth Travel

Small Ships, Big Adventures

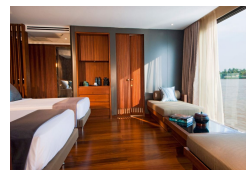
wildearth-travel.com

info@wildearth-travel.com

INSIDE YOUR SHIP



Suite. From



Wild Earth Travel

Small Ships, Big Adventures

0800 945 3327 (within New Zealand) | +64 (0) 3 365 1355 | 1800 107 715 (within Australia)

info@wildearth-travel.com | wildearth-travel.com

Wild Earth Travel

Small Ships, Big Adventures

wildearth-travel.com

info@wildearth-travel.com

PRICING

01-Aug-2025 to 05-Aug-2025

Suite. From 6200 USD pp

08-Aug-2025 to 12-Aug-2025

Suite. From 6200 USD pp

22-Aug-2025 to 26-Aug-2025

Suite. From 6200 USD pp

29-Aug-2025 to 02-Sep-2025

Suite. From 6200 USD pp

05-Sep-2025 to 09-Sep-2025

Suite. From 6200 USD pp

19-Sep-2025 to 23-Sep-2025

Suite. From 6200 USD pp

03-Oct-2025 to 07-Oct-2025

Suite. From 6200 USD pp

17-Oct-2025 to 21-Oct-2025

Suite. From 6200 USD pp

31-Oct-2025 to 04-Nov-2025

Suite. From 6200 USD pp

14-Nov-2025 to 18-Nov-2025

Suite. From 6200 USD pp

28-Nov-2025 to 02-Dec-2025

Suite. From 6200 USD pp

05-Dec-2025 to 09-Dec-2025

Suite. From 6200 USD pp

12-Dec-2025 to 16-Dec-2025

Suite. From 6200 USD pp

26-Dec-2025 to 30-Dec-2025

Suite. From 6840 USD pp

09-Jan-2026 to 13-Jan-2026

Suite. From 6400 USD pp

16-Jan-2026 to 20-Jan-2026

Suite. From 6400 USD pp

23-Jan-2026 to 27-Jan-2026

Suite. From 6400 USD pp

06-Feb-2026 to 10-Feb-2026

Suite. From 6400 USD pp

13-Feb-2026 to 17-Feb-2026

Suite. From 6400 USD pp

20-Feb-2026 to 24-Feb-2026

Suite. From 6400 USD pp

06-Mar-2026 to 10-Mar-2026

Suite. From 6400 USD pp

13-Mar-2026 to 17-Mar-2026

Suite. From 6400 USD pp

Wild Earth Travel

Small Ships, Big Adventures

wildearth-travel.com

info@wildearth-travel.com

20-Mar-2026 to 24-Mar-2026

Suite. From 6400 USD pp

30-Oct-2026 to 03-Nov-2026

Suite. From 6400 USD pp

03-Apr-2026 to 07-Apr-2026

Suite. From 6400 USD pp

13-Nov-2026 to 17-Nov-2026

Suite. From 6400 USD pp

10-Apr-2026 to 14-Apr-2026

Suite. From 6400 USD pp

17-Apr-2026 to 21-Apr-2026

Suite. From 6400 USD pp

31-Jul-2026 to 04-Aug-2026

Suite. From 6400 USD pp

07-Aug-2026 to 11-Aug-2026

Suite. From 6400 USD pp

21-Aug-2026 to 25-Aug-2026

Suite. From 6400 USD pp

28-Aug-2026 to 01-Sep-2026

Suite. From 6400 USD pp

04-Sep-2026 to 08-Sep-2026

Suite. From 6400 USD pp

18-Sep-2026 to 22-Sep-2026

Suite. From 6400 USD pp

02-Oct-2026 to 06-Oct-2026

Suite. From 6400 USD pp

16-Oct-2026 to 20-Oct-2026

Suite. From 6400 USD pp

Wild Earth Travel
Small Ships, Big Adventures

0800 945 3327 (within New Zealand) | +64 (0) 3 365 1355 | **1800 107 715** (within Australia)

info@wildearth-travel.com | wildearth-travel.com

Wild Earth Travel

Small Ships, Big Adventures

wildearth-travel.com

info@wildearth-travel.com

PRICING

27-Nov-2026 to 01-Dec-2026

Suite. From 6400 USD pp

04-Dec-2026 to 08-Dec-2026

Suite. From 6400 USD pp

11-Dec-2026 to 15-Dec-2026

Suite. From 6400 USD pp

25-Dec-2026 to 29-Dec-2026

Suite. From 7040 USD pp

08-Jan-2027 to 12-Jan-2027

Suite. From 6600 USD pp

15-Jan-2027 to 19-Jan-2027

Suite. From 6600 USD pp

22-Jan-2027 to 26-Jan-2027

Suite. From 6600 USD pp

05-Feb-2027 to 09-Feb-2027

Suite. From 6600 USD pp

12-Feb-2027 to 16-Feb-2027

Suite. From 6600 USD pp

19-Feb-2027 to 23-Feb-2027

Suite. From 6600 USD pp

05-Mar-2027 to 09-Mar-2027

Suite. From 6600 USD pp

12-Mar-2027 to 16-Mar-2027

Suite. From 6600 USD pp

19-Mar-2027 to 23-Mar-2027

Suite. From 6600 USD pp

02-Apr-2027 to 06-Apr-2027

Suite. From 6600 USD pp

09-Apr-2027 to 13-Apr-2027

Suite. From 6600 USD pp

16-Apr-2027 to 20-Apr-2027

Suite. From 6600 USD pp

06-Aug-2027 to 10-Aug-2027

Suite. From 6600 USD pp

13-Aug-2027 to 17-Aug-2027

Suite. From 6600 USD pp

20-Aug-2027 to 24-Aug-2027

Suite. From 6600 USD pp

03-Sep-2027 to 07-Sep-2027

Suite. From 6600 USD pp

17-Sep-2027 to 21-Sep-2027

Suite. From 6600 USD pp

01-Oct-2027 to 05-Oct-2027

Suite. From 6600 USD pp



Wild Earth Travel

Small Ships, Big Adventures

wildearth-travel.com

info@wildearth-travel.com

15-Oct-2027 to 19-Oct-2027

Suite. From	6600 USD pp
-------------	-------------

29-Oct-2027 to 02-Nov-2027

Suite. From	6600 USD pp
-------------	-------------

12-Nov-2027 to 16-Nov-2027

Suite. From	6600 USD pp
-------------	-------------

26-Nov-2027 to 30-Nov-2027

Suite. From	6600 USD pp
-------------	-------------

03-Dec-2027 to 07-Dec-2027

Suite. From	6600 USD pp
-------------	-------------

10-Dec-2027 to 14-Dec-2027

Suite. From	6600 USD pp
-------------	-------------

24-Dec-2027 to 28-Dec-2027

Suite. From	7260 USD pp
-------------	-------------