

Wild Earth Travel

Small Ships, Big Adventures

wildearth-travel.com

info@wildearth-travel.com

EXPLORER CRUISE - FROM SIEM REAP TO PHNOM PENH

Go deeper into the mesmerising culture and life the Mekong river. Every activity onboard the five-star Aqua Mekong brings a fresh perspective of culture and life in Cambodia and Vietnam, so the 4-night itinerary is an ideal addition to any existing travel itinerary of the region. Included are twice-daily excursions (walk, bike, kayak or ride a tuk-tuk) and expert-guided visits to Mekong River's dynamic riverside markets, villages, and holy sites.



ITINERARY

Day 1 CAMBODIA Tonle Sap Lake - Siem Reap

Our crew warmly welcomes you at our meeting point at our Siem Reap meeting point where our air-conditioned coach will take you on a picturesque 45-minute countryside ride to the Aqua Mekong, which is docked on the Tonle Sap lake. for check-in to your 3-story, five star Mekong abode. Settle into your floating luxury retreat and memorable first night on board your five-star home on the legendary Mekong.

Day 2 CAMBODIA Tonle Sap Lake - Prek Toal - Moat Khla

Hop on our launch boats and discover vast wetlands, birdlife and remote stilt communities around the Tonle Sap Lake, a UNESCO Biosphere Reserve designated in 1997. Spot large waterbirds like the spot-billed pelicans, milky stork, black-headed ibis and the elusive masked finfoot within the

Wild Earth Travel

Small Ships, Big Adventures

0800 945 3327 (within New Zealand) | +64 (0) 3 365 1355 | **1800 107 715** (within Australia)

info@wildearth-travel.com | **wildearth-travel.com**



Wild Earth Travel

Small Ships, Big Adventures

wildearth-travel.com

info@wildearth-travel.com

22,000-hectare Prek Toal Core Bird Reserve, one of the last refuges in Southeast Asia located on the Tonle Sap Lake. After lunch, sail to the floating village of Moat Khla and attend a Buddhist blessing ceremony in this isolated community accessible only by water.

All itineraries are subject to change, due to weather and other conditions.

Day 3 CAMBODIA Tonle Sap Lake - Chhnok Tru - Kampong Chhnang

Explore remote villages around the Tonle Sap Lake, designated as a UNESCO Biosphere Reserve in 1997. In Chhnok Tru, we "slide" into an ice factory and learn from locals what it's like to live in a town where schools, churches, pagodas, and even the karaoke bar and police station all float. In the afternoon, continue experiencing Khmer riverside life in Kampong Chhnang. In this serene village, meet traditional potters and palm-sugar producers and watch them practice age-old craftsmanship and techniques dating back to the 6th century that is still highly relevant and valuable today.

Day 4 CAMBODIA Tonle Sap And Mekong River - Koh Chen - Koh Oknha Tey

Awake to the beauty of rural Cambodia and sail by skiff to the silversmith village of Koh Chen for a first-hand encounter with artisans producing magnificent royal Khmer silverware. Keep an eye out for their famous silver bowls, regularly chosen by Cambodia's king as gifts for visiting dignitaries. In the afternoon, we set off for the Koh Oknha Tey, Mekong's 'Silk Island' where Khmer artisans showcase the dyeing and weaving of krama, a silk scarf loved by locals and a treasured cultural asset that dates back from the Angkor period. A biking option is available for those who wish to explore deeper into the island.

Day 5 CAMBODIA Phnom Penh

See the best of the Cambodian capital on motorized tuk-tuk, including the Royal Palace, Silver Pagoda and the National Museum of Cambodia, home to the world's largest collection of Khmer art. Based on your preferences, visit the Tuol Sleng Genocide Museum or shop at the Russian Market before disembarking the Aqua Mekong.

Please Note:

Wild Earth Travel

Small Ships, Big Adventures

0800 945 3327 (within New Zealand) | +64 (0) 3 365 1355 | **1800 107 715** (within Australia)

info@wildearth-travel.com | **wildearth-travel.com**

Wild Earth Travel

Small Ships, Big Adventures

wildearth-travel.com

info@wildearth-travel.com

YOUR SHIP: AQUA MEKONG

YOUR SHIP:	Aqua Mekong
VESSEL TYPE:	Luxury River Expedition
LENGTH:	62.4 meters / 204 feet
PASSENGER CAPACITY:	40
BUILT/REFURBISHED:	2014

Spacious and indulgent, yet intimate enough to feel entirely exclusive, the Aqua Mekong incorporates relaxed yet refined lounging and dining areas and can accommodate a maximum of 40 guests plus crew. Modern navigation technologies and the highest cruise ship standards as well as our experienced river pilot and crew ensure smooth travel and safety on the water.

The Aqua Mekong has 20 air conditioned Design Suites, each one a generous 30 square meters (320 square feet), eight with balconies and all created entirely of local materials with the relaxed sophistication and contemporary comforts of a five star resort. Floor to ceiling panoramic windows allow guests to gaze upon the Mekong from the pillow top California king size bed that can be converted upon request into two full twin beds. More captivating views await on the plush, roomy daybed placed by the window wall or for our eight balcony accommodations, outside along with a romantic table for two. Those who wish to keep up on the world beyond these enthralling riverbanks will appreciate the flat screen television and complementary high speed wireless internet.

Sunlit indoors and out, the top level Observation Deck aboard the Aqua Mekong has been designed to seamlessly connect

guests with the constantly shifting landscape of floating Vietnamese villages, French colonial church spires and gilded Buddhist stupas along this mighty river, always in the utmost comfort. Whether one chooses to relax in the air conditioned Indoor Lounge, go horizontal under the sun outside at the ship's Outdoor Lounge area or cool off with a plunge in the shimmering pool at the bow side, the Observation Deck ensures that the river always remains in full view.

Guests gravitate to the Indoor Lounge in the mornings for ca phe a, Vietnamese coffee poured over ice with sweet condensed milk, between excursions to swap travelers tales and for daily lectures from the expert local guides.



cal guides.

Wild Earth Travel

Small Ships, Big Adventures

0800 945 3327 (within New Zealand) | +64 (0) 3 365 1355 | **1800 107 715** (within Australia)

info@wildearth-travel.com | wildearth-travel.com

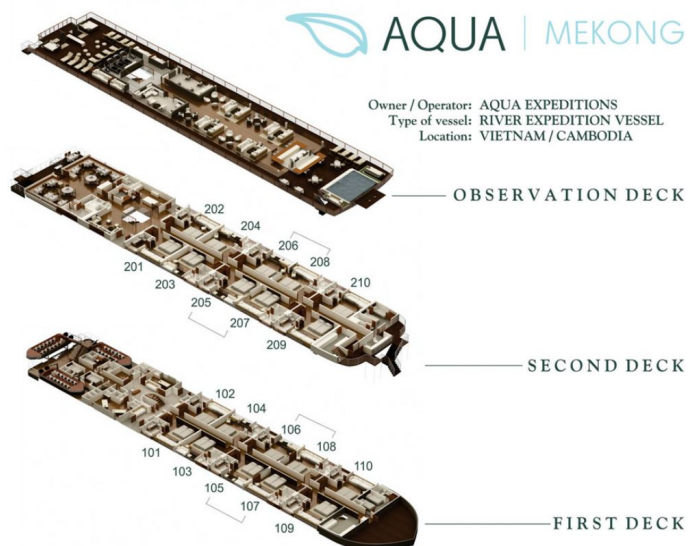
Wild Earth Travel

Small Ships, Big Adventures

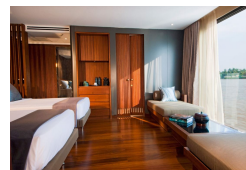
wildearth-travel.com

info@wildearth-travel.com

INSIDE YOUR SHIP



Suite. From



Wild Earth Travel

Small Ships, Big Adventures

0800 945 3327 (within New Zealand) | +64 (0) 3 365 1355 | 1800 107 715 (within Australia)

info@wildearth-travel.com | wildearth-travel.com

Wild Earth Travel

Small Ships, Big Adventures

wildearth-travel.com

info@wildearth-travel.com

PRICING

26-Sep-2025 to 30-Sep-2025

Suite. From 6200 USD pp

24-Oct-2025 to 28-Oct-2025

Suite. From 6200 USD pp

07-Nov-2025 to 11-Nov-2025

Suite. From 6200 USD pp

21-Nov-2025 to 25-Nov-2025

Suite. From 6200 USD pp

25-Sep-2026 to 29-Sep-2026

Suite. From 6400 USD pp

09-Oct-2026 to 13-Oct-2026

Suite. From 6400 USD pp

23-Oct-2026 to 27-Oct-2026

Suite. From 6400 USD pp

06-Nov-2026 to 10-Nov-2026

Suite. From 6400 USD pp

20-Nov-2026 to 24-Nov-2026

Suite. From 6400 USD pp

10-Sep-2027 to 14-Sep-2027

Suite. From 6600 USD pp

24-Sep-2027 to 28-Sep-2027

Suite. From 6600 USD pp

08-Oct-2027 to 12-Oct-2027

Suite. From 6600 USD pp

22-Oct-2027 to 26-Oct-2027

Suite. From 6600 USD pp

05-Nov-2027 to 09-Nov-2027

Suite. From 6600 USD pp

19-Nov-2027 to 23-Nov-2027

Suite. From 6600 USD pp