



Wild Earth Travel

Small Ships, Big Adventures

wildearth-travel.com

info@wildearth-travel.com

EXPEDITION WILD SCOTLAND AND ICELAND: FROM THE HIGHLANDS TO THE LAND OF THE ELVES

Europe's island treasures and explorer's terrain on your doorstep: this route paints a picture of wild landscapes with bizarre rocky coastlines and volcanoes. From the clans of Great Britain to the elves of Iceland. The flora and fauna on this expedition is as diverse as the cultural heritage waiting to be discovered by you.

Wild Earth Travel

Small Ships, Big Adventures

0800 945 3327 (within New Zealand) | +64 (0) 3 365 1355 | **1800 107 715** (within Australia)

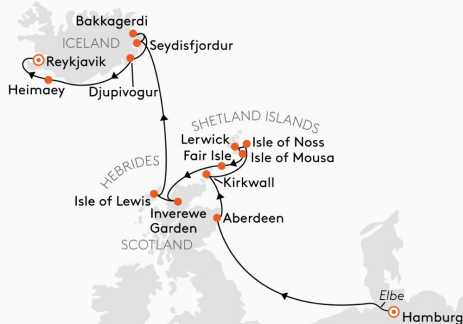
info@wildearth-travel.com | **wildearth-travel.com**

Wild Earth Travel

Small Ships, Big Adventures

wildearth-travel.com

info@wildearth-travel.com



Untamed charm envelops the Orkney Islands. The archipelago, consisting of around 70 islands, forms a spectacular backdrop for your insights into European cultural history. Kirkwall on the mainland, with its red and yellow sandstone St Magnus Cathedral built in 1137, is an imposing reminder of the Middle Ages - one of the most interesting buildings in northern Scotland. Narrow, cobbled streets are lined with traditional shops and pubs. Enjoy the opportunity to go for an independent stroll. Kirkwall is also an ideal starting point for exploring the surrounding area, with its prehistoric sites, rugged coastline and gently rolling hills.

Mon, 14.06.2027 - Tue, 15.06.2027 Shetland Islands

(Isle of Noss , Lerwick, Isle of Mousa , Fair Isle)

Close by, but seldom visited: where the Atlantic and the North Sea meet lie Scotland's approximately 100 Shetland Islands. The untamed power of the sea sets the stage for breathtaking natural spectacles - and the front-row seats are ready for you on board.

You are in the centre of the experience, observing the birdlife of the Shetland Islands from respectful proximity on the cliffs of the Isle of Noss. During a Zodiac cruise, you will be able to watch an "open-air concert" of thousands of seabirds, which, depending on the season, breed on the rugged cliffs. Northern gannets, northern fulmars, long-tailed ducks, European shags and skuas are just a few of the species that can be seen here. Your experts on board will ensure that you can recognise and name the birds after just a short time.

The town of Lerwick welcomes you to the Shetland Islands with a special sense of calm. The 18th-century stone houses nestle closely together and reveal their history on a stroll through the old town. In the surrounding countryside, you will be captivated by the numerous archaeological sites that tell of the everyday lives of the Stone Age people and Vikings.

The island world in northern Scotland offers you a true expedition experience when you land with the Zodiacs on the uninhabited Isle of Mousa. A circular walk with your experts will introduce you to the history and construction of the typical brochs - the Broch of Mousa was built with thick masonry as a defence tower in the Iron Age. Or you can go on a nature walk on the island, where you might be lucky to spot seals and grey seals.

ITINERARY

Thu, 10.06.2027 Individual travel arrangements to Hamburg

Departure 20.00 hrs

Fri, 11.06.2027 Relaxation at sea

Sat, 12.06.2027 Aberdeen/Scotland/Great Britain

08.00 - 19.00 hrs

Welcome to Aberdeen, the "city of flowers and granite" in north-east of Scotland. Where the pretty rivers Dee and Don meet, old traditions meet modern influences. The sparkling granite architecture gives the harbour city an elegant atmosphere and makes it a real highlight. Discover the impressive tropical winter gardens in Duthie Park and stroll through the charming medieval city centre. With renowned universities and a rich cultural scene, the streets are full of life. Just a stone's throw from the city centre, one of the best beaches in Scotland - Aberdeen Beach - invites you for a leisurely stroll. You might spot dolphins here or in Aberdeen harbour, for which the city is also famous.

Sun, 13.06.2027 Kirkwall/Orkney Islands

Wild Earth Travel

Small Ships, Big Adventures

0800 945 3327 (within New Zealand) | +64 (0) 3 365 1355 | **1800 107 715** (within Australia)

info@wildearth-travel.com | **wildearth-travel.com**

Wild Earth Travel

Small Ships, Big Adventures

wildearth-travel.com

info@wildearth-travel.com

When the anchor drops into the North Sea off Fair Isle, the excitement builds.

The Zodiacs will take you to a birdwatcher's paradise: the spectacular sandstone cliffs and lush grasslands are home to thousands and thousands of northern gannets and puffins. In addition, every patch of grass is grazed by sheep or lambs. The 60 or so human inhabitants live in a small area of Fair Isle - the rest belongs to the animals. One of the most remote inhabited islands in Great Britain once again emphasises the incredible northern beauty.

Wed, 16.06.2027 Inverewe Garden

Head for the blooming life on the shores of Loch Ewe. On the Scottish mainland, you will be surprised by a colourful whim of nature, possibly caressed by the mild climate of the Gulf Stream. Osgood Mackenzie made use of the Gulf Stream back in 1862, creating an arboretum, flowerbeds and ponds in the Inverewe Garden - a wonderful place for your own individual stroll among exotic plants from all over the world. In this unique garden, you will be surrounded by heavenly peace and a variety of colours. The famous Loch Ness tells of the heyday of the clans and the myth of a sea monster in the region. Breathe deeply and enjoy nature: take a hike with your experts and experience the charm of the expansive Highlands.

Thu, 17.06.2027 Isle of Lewis/Outer Hebrides

Unspoilt and wild: the Isle of Lewis - the northern region of Lewis and Harris, the main island of the Outer Hebrides - shows you the beauty of the rugged archipelago. With wild mountains and moon-like landscapes, calm lochs and idyllic beaches, Lewis emphasises the multifaceted beauty of Scotland. The mystical stone circles, which take you back some 4,000 years in time, are also part of this. With the help of your on-board experts, you will feel like archaeologists, since the Outer Hebrides are famous for the excavations of Neolithic artefacts, medieval churches and even mummies. The other half of the island of Lewis is Harris, the home of tweed, which is truly appealing. The island's own pure new wool is the secret to the quality of the wool cloth produced here.

Fri, 18.06.2027 Relaxation at sea

Sat, 19.06.2027 - Sun, 20.06.2027 Iceland

(Seydisfjörður, Bakkagerdi, Djúpivogur)

Adventure will be your constant companion during your eventful days on the east coast of Iceland. The fishing village of Seydisfjörður lies in an idyllic setting at the end of a fjord of the same name, surrounded by mountains that reach heights of up to 1,000 m (3,281 ft) and are almost always capped with snow. In the town centre, there are many historic wooden buildings in the style of the 1920s that bear witness to the wealth of the herring boom. A creative landmark of the city is the rainbow street with colourful cobblestones that lead to the blue church - a photo opportunity that will inspire you just as much as the small art galleries, cafes and shops during your individual shore visit. You can explore the surrounding area with its waterfalls on your own on numerous trails directly from the boat.

Iceland's magical side as the "island of mythical creatures and trolls" is revealed in sleepy Bakkagerdi. A paradise for nature lovers and a magical stop on your route. Legend has it that the queen of the elves reigns here over the narrow Borgarfjörður fjord and the mountains rising up to 620 m (2034 ft). This landscape with enchanted rock formations such as the elf hill attracts mystics and hikers alike. Ornithologists will love the nearby cliffs of Hafnarholmi, where puffins can most likely be observed practising their flying skills.

Djúpivogur, one of Iceland's oldest trading centres, is a very remote destination on the relatively undeveloped east coast of Iceland. Here, the connection of the people of Iceland with nature and especially with the world of birds is elevated to an art form - with the work "Eggin í Gledivík" by the renowned Icelandic artist Sigurður Guðmundsson: 34 huge granite eggs are lined up along 200 m (656 ft) of coast. They represent the species of birds that nest in the Djúpivogur area, such as the red-necked grebe. Discuss with your experts on board the emotions that Iceland triggers in artists and in your soul: amazement, thoughtfulness and respect.

Mon, 21.06.2027 Heimaey/Westman Islands

Mysticism and adventure characterise the Westman Islands off the south coast of Iceland. Heimaey is not only the largest and only inhabited island in the archipelago, but also the one with the most known volcanic eruptions. In 1973, the Eldfell volcano erupted and buried most of the village under itself. Thanks to a quick evacuation, mostly by fishing boats, all residents could be brought to safety in time. The lava landscape and the Eldheimar Museum bear

Wild Earth Travel

Small Ships, Big Adventures

0800 945 3327 (within New Zealand) | +64 (0) 3 365 1355 | **1800 107 715** (within Australia)

info@wildearth-travel.com | wildearth-travel.com



Wild Earth Travel

Small Ships, Big Adventures

wildearth-travel.com

info@wildearth-travel.com

impressive witness to the event. Your on-board expedition team offers hikes of various lengths. Take the opportunity, for example, to climb Eldfell or marvel at the lava formations on the cliffs.

[Tue, 22.06.2027 Reykjavik/Iceland](#)

Arrival 13.00 hrs
Overnight stay on board

Iceland, the "queen of the elements", welcomes you to its fascinating capital city. The impressive forces of nature beneath the earth are already evident in the name of Reykjavik, which literally means "Smoky Bay". The houses are closely lined up along the coast, while the nearby mountains surround the city like a protective cloak. Discover old buildings and relics from the Viking Age and the Middle Ages on independent explorations. Reykjavik shows its great style with statues, sculptures and street art. Experience the creative power of untamed nature when you marvel at the wonders of the largest volcanic island on our planet on excursions* in the surrounding area. Gain spectacular insights into a landscape that is still in the process of being created.

[Wed, 23.06.2027 Reykjavik/Iceland](#)

Please Note:

Itineraries are subject to change.

Wild Earth Travel

Small Ships, Big Adventures

0800 945 3327 (within New Zealand) | +64 (0) 3 365 1355 | **1800 107 715** (within Australia)

info@wildearth-travel.com | **wildearth-travel.com**

Wild Earth Travel

Small Ships, Big Adventures

wildearth-travel.com

info@wildearth-travel.com

YOUR SHIP: HANSEATIC INSPIRATION/NATURE/SPIRIT

YOUR SHIP:	Hanseatic
VESSEL TYPE:	Inspiration/Nature/Spirit
LENGTH:	138 m
PASSENGER CAPACITY:	230
BUILT/REFURBISHED:	2021

The HANSEATIC inspiration, a small, state-of-the-art expedition ship with a maximum of 230 guests, offers a perfect blend of adventure and comfort for explorers seeking to uncover the world's wonders. As an international vessel conducting cruises in both English and German, it brings over 30 years of expertise from a market leader in German-speaking countries to every journey. Each expedition is a masterpiece, passionately crafted to reveal far-flung worlds--be it icy realms, tropical paradises, wildlife havens, or cultural gems--making every voyage a unique discovery aboard this exceptional ship.

Features of all cabins and suites

An ocean view with even more: exclusively outside cabins and suites, almost all with balconies or French balconies

Spaciously designed - enjoy a relaxing stay in rooms from 21 m²/226 ft² up to 71 m²/764 ft² in size

Exceptionally equipped - for example, with binoculars, Nordic Walking poles, air conditioning, coffee machine and mini bar (free of charge) and 24-hour cabin service

Separable beds

Rain shower and heated wall in bathroom (e.g. for towels and

wet parkas)

Extensive infotainment with live broadcast and recordings of expert presentations, forwardview camera, navigation chart, films and much more

Restaurants

Aboard the HANSEATIC inspiration, a new kind of freedom blends adventure and pleasure with a culinary journey across three exceptional restaurants. The spacious HANSEATIC Restaurant offers flexible mealtimes and a free choice of seating, serving a daily-changing menu of global flavors inspired by local specialties, paired with fine wines and supported by attentive 24-hour cabin service. At the Lido Restaurant, guests can savor breakfast under the open sky or enjoy a perfectly grilled steak from the outdoor barbecue, complete with panoramic views and an open show kitchen. The specialty restaurant Nikkei fuses fine Japanese creations with modern Peruvian cuisine, delivering a unique dining experience that elevates exploration to new heights--all while bars in the Observation Lounge and HanseAtrium offer favorite drinks against stunning backdrops, from Nordic fjords to icy Antarctic vistas.

Fitness and Wellness

On the HANSEATIC inspiration, an extraordinary time out awaits after thrilling Zodiac rides, challenging hikes, or Arctic adventures. Unwind in the Ocean Spa, where a Finnish sauna with stunning ocean views, a gentle steam sauna, an ice fountain, and a relaxation room rejuvenate your senses, complemented by professional massages, cosmetic treatments, and eco-friendly products made from natural, vegan ingredients.

Wild Earth Travel

Small Ships, Big Adventures

0800 945 3327 (within New Zealand) | +64 (0) 3 365 1355 | **1800 107 715** (within Australia)

info@wildearth-travel.com | **wildearth-travel.com**

Wild Earth Travel

Small Ships, Big Adventures



wildearth-travel.com

info@wildearth-travel.com

Stay active in the 100 m² fitness room or separate course room--both with ocean vistas--guided by a fitness coach offering personalized advice and a variety of courses, either indoors or on deck. The pool area, with its flexible canopy, invites relaxation year-round, featuring water loungers, a whirlpool, and a bar, ensuring a perfect blend of indulgence and revitalization against the backdrop of the open sea.

Knowledge

Shore excursions and Zodiac rides come alive with deeper context through fascinating presentations in the HanseAtrium, a high-tech lounge where experts share daily precaps and recaps, doubling as an atmospheric evening bar for films and discussions. The Ocean Academy enhances the journey with a Study Wall and interactive poster of scientific insights, microscopes for exploring hidden wonders alongside experts, and Study Seats--with swivel touchscreens--for personal dives into science. Supported by travel diaries and destination videos, this immersive experience broadens horizons with cutting-edge tools and expertise.



expertise.

Wild Earth Travel

Small Ships, Big Adventures

0800 945 3327 (within New Zealand) | +64 (0) 3 365 1355 | **1800 107 715** (within Australia)

info@wildearth-travel.com | **wildearth-travel.com**

Wild Earth Travel

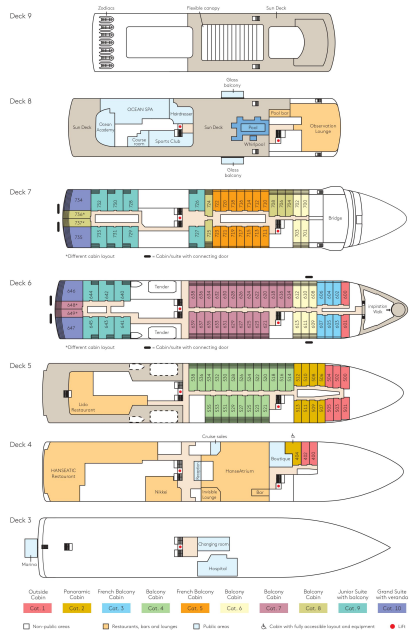
Small Ships, Big Adventures

wildearth-travel.com

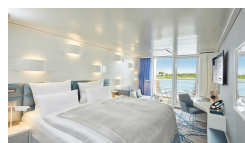
info@wildearth-travel.com

INSIDE YOUR SHIP

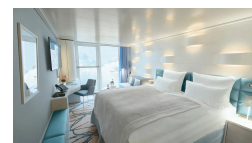
Deck plan HANSEATIC inspiration



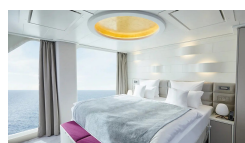
Balcony Cabin



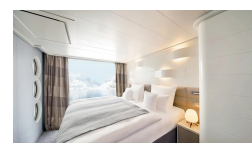
French Balcony Cabin



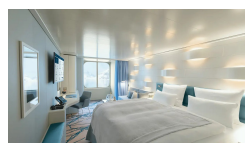
Grand Suite



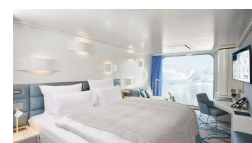
Junior Suite



Outside Cabin



Panoramic Cabin



Wild Earth Travel
Small Ships, Big Adventures

0800 945 3327 (within New Zealand) | +64 (0) 3 365 1355 | 1800 107 715 (within Australia)

info@wildearth-travel.com | wildearth-travel.com



Wild Earth Travel

Small Ships, Big Adventures

wildearth-travel.com

info@wildearth-travel.com

PRICING

10-Jun-2027 to 23-Jun-2027

Outside Cabin	8390 EUR pp
Panoramic Cabin	8390 EUR pp
French Balcony Cabin	10520 EUR pp
Balcony Cabin	11420 EUR pp
Junior Suite	15920 EUR pp
Grand Suite	21690 EUR pp

Wild Earth Travel

Small Ships, Big Adventures

0800 945 3327 (within New Zealand) | +64 (0) 3 365 1355 | **1800 107 715** (within Australia)

info@wildearth-travel.com | **wildearth-travel.com**