



EXPEDITION SVALBARD CIRCUMNAVIGATION VIA KVITOYA - SVALBARD'S SECRET SIDE

This cruise offers a pioneering circumnavigation of Svalbard, venturing to rarely explored coasts in the far north and east, including Kvitoya, bypassing the Hinlopen Strait for a unique route. Highlights include intensive Arctic experiences amid striking mountains, majestic glaciers, and bizarre ice sculptures, with Zodiac landings in habitats teeming with walrus, seals, and polar bears. Expert-led hikes through pristine Arctic landscapes deepen the adventure, as the journey from Longyearbyen to Tromsø unveils Svalbard's untouched beauty and wildlife in an unforgettable exploration of the far north.



ITINERARY

Mon, 06.07.2026 Charter flight from Germany to Longyearbyen

Longyearbyen/Svalbard/Norway, departure 21.00 hrs

Tue, 07.07.2026 - Thu, 16.07.2026 Svalbard adventure

Highlights and landings depending on the conditions (including Prins Karls Forland, Ny-Alesung, 14th July Glacier, Liefdefjord, Beverlysundet, Sjuoyane, Storoya, Kvitoya, Nordaustlandet, Wilhelm Island, cruising through Freeman Sound, Barents Island, Hornsund)

High in northern Europe lies an expedition destination that awakens the yearnings of explorers like no other: Spitsbergen--myth and adventure combined. In this nautically demanding region, the HANSEATIC nature showcases its full advantages: small, agile, and equipped with the highest ice class for passenger ships. When conditions are favourable, it navigates the "outer route" via Kvitøya, attempting a circumnavigation. Colossal glaciers, deep fjords, and pristine wilderness: the habitat of polar bears, arctic foxes, whales, and walrus stirs genuine feelings of exploration within you. The captain and crew continually adjust the route, with weather and ice conditions



Wild Earth Travel

Small Ships, Big Adventures

wildearth-travel.com

info@wildearth-travel.com

determining the flexible course.

With some luck, the small island of Prins Karls Forland offers impressive wildlife sightings: herds of imposing walruses often gather here. In Ny Alesund, you reach one of the northernmost settlements on Earth. Once a coal mining site, it is now a hub for international scientists focusing on meteorology, climate change studies, and aurora research.

The over 2,000 glaciers are fascinating, with the spectacular 14th of July Glacier being one of them. Nearby slopes bloom with arctic flowers while kittiwakes and thick-billed murre nest on the cliffs. Pointed peaks frame the Liefdefjord, at the end of which rises the mighty Monaco Glacier. Your chances of observing polar bears from a respectful distance on deck are high here and throughout your Spitsbergen expedition.

Beverlysundet, in the north of the archipelago, is known for its wildlife and historical sites from previous expeditions. Sjuøyane, or the Seven Islands, represents the northernmost part of Spitsbergen. Here, too, you will experience arctic landscapes with glaciers and fjords, and possibly exciting wildlife sightings. Storøya is your last stop before the remote island of Kvitøya. Should the ice allow passage, you will indeed make discovery history, akin to Swedish polar researcher Salomon August Andree in 1897, by reaching the "white island." Secluded in its most beautiful form, ice-covered with a rocky peninsula in the east—it is an arctic dream. Humans seldom come here, but polar bears are frequent visitors.

The steel-reinforced hull of the HANSEATIC nature ensures safe passage through the area, enabling further adventures on Spitsbergen's east coast. Landing with Zodiacs on the predominantly ice-capped island of Nordaustlandet, you might spot reindeer and arctic foxes during a hike across the barren tundra, along with Svalbard poppy and purple saxifrage. After visiting the uninhabited island of Wilhelmøya, you proceed through the narrow Freemansund between Barentsøya and Edgeøya, conditions permitting. Can reindeer be observed amidst blooming nature on Barentsøya? All this could only be topped by the appearance of whales, perhaps even the largest and heaviest of them all: the blue whale.

To conclude, the view of the glacier edge of Samarinbreen in Hornsund creates another of many lasting memories—framed by imposing mountains. Alongside Barents, Amundsen, and modern-day researchers, you now join the ranks of Spitsbergen's discoverers.

Fri, 17.07.2026 Relaxation at sea

Sat, 18.07.2026 Tromsø/Norway

Arrival 5.00 hrs
Charter flight from Tromsø to Germany.

Please note:

Itineraries are subject to change.

Wild Earth Travel
Small Ships, Big Adventures

0800 945 3327 (within New Zealand) | +64 (0) 3 365 1355 | **1800 107 715** (within Australia)

info@wildearth-travel.com | wildearth-travel.com



Wild Earth Travel

Small Ships, Big Adventures

wildearth-travel.com

info@wildearth-travel.com

YOUR SHIP: HANSEATIC INSPIRATION/NATURE/SPIRIT

YOUR SHIP:	Hanseatic Inspiration/Nature/Spirit
VESSEL TYPE:	Expedition
LENGTH:	138 m
PASSENGER CAPACITY:	230
BUILT/REFURBISHED:	2021

The HANSEATIC inspiration, a small, state-of-the-art expedition ship with a maximum of 230 guests, offers a perfect blend of adventure and comfort for explorers seeking to uncover the world's wonders. As an international vessel conducting cruises in both English and German, it brings over 30 years of expertise from a market leader in German-speaking countries to every journey. Each expedition is a masterpiece, passionately crafted to reveal far-flung worlds--be it icy realms, tropical paradises, wildlife havens, or cultural gems--making every voyage a unique discovery aboard this exceptional ship.

Features of all cabins and suites

An ocean view with even more: exclusively outside cabins and suites, almost all with balconies or French balconies

Spaciously designed - enjoy a relaxing stay in rooms from 21 m²/226 ft² up to 71 m²/764 ft² in size

Exceptionally equipped - for example, with binoculars, Nordic Walking poles, air conditioning, coffee machine and mini bar (free of charge) and 24-hour cabin service

Separable beds

Rain shower and heated wall in bathroom (e.g. for towels and

wet parkas)

Extensive infotainment with live broadcast and recordings of expert presentations, forwardview camera, navigation chart, films and much more

Restaurants

Aboard the HANSEATIC inspiration, a new kind of freedom blends adventure and pleasure with a culinary journey across three exceptional restaurants. The spacious HANSEATIC Restaurant offers flexible mealtimes and a free choice of seating, serving a daily-changing menu of global flavors inspired by local specialties, paired with fine wines and supported by attentive 24-hour cabin service. At the Lido Restaurant, guests can savor breakfast under the open sky or enjoy a perfectly grilled steak from the outdoor barbecue, complete with panoramic views and an open show kitchen. The specialty restaurant Nikkei fuses fine Japanese creations with modern Peruvian cuisine, delivering a unique dining experience that elevates exploration to new heights--all while bars in the Observation Lounge and HanseAtrium offer favorite drinks against stunning backdrops, from Nordic fjords to icy Antarctic vistas.

Fitness and Wellness

On the HANSEATIC inspiration, an extraordinary time out awaits after thrilling Zodiac rides, challenging hikes, or Arctic adventures. Unwind in the Ocean Spa, where a Finnish sauna with stunning ocean views, a gentle steam sauna, an ice fountain, and a relaxation room rejuvenate your senses, complemented by professional massages, cosmetic treatments, and eco-friendly products made from natural, vegan ingredients.

Wild Earth Travel
Small Ships, Big Adventures

0800 945 3327 (within New Zealand) | +64 (0) 3 365 1355 | **1800 107 715** (within Australia)

info@wildearth-travel.com | wildearth-travel.com



Wild Earth Travel

Small Ships, Big Adventures

wildearth-travel.com

info@wildearth-travel.com

Stay active in the 100 m² fitness room or separate course room--both with ocean vistas--guided by a fitness coach offering personalized advice and a variety of courses, either indoors or on deck. The pool area, with its flexible canopy, invites relaxation year-round, featuring water loungers, a whirlpool, and a bar, ensuring a perfect blend of indulgence and revitalization against the backdrop of the open sea.

Knowledge

Shore excursions and Zodiac rides come alive with deeper context through fascinating presentations in the HanseAtrium, a high-tech lounge where experts share daily precaps and recaps, doubling as an atmospheric evening bar for films and discussions. The Ocean Academy enhances the journey with a Study Wall and interactive poster of scientific insights, microscopes for exploring hidden wonders alongside experts, and Study Seats--with swivel touchscreens--for personal dives into science. Supported by travel diaries and destination videos, this immersive experience broadens horizons with cutting-edge tools and expertise.



expertise.

Wild Earth Travel

Small Ships, Big Adventures

0800 945 3327 (within New Zealand) | +64 (0) 3 365 1355 | **1800 107 715** (within Australia)

info@wildearth-travel.com | **wildearth-travel.com**

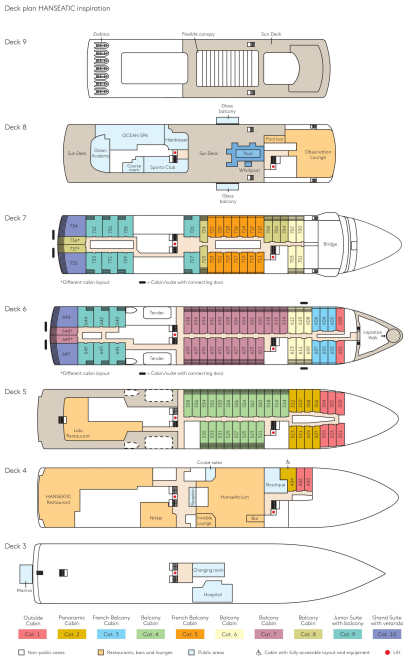


Wild Earth Travel
Small Ships, Big Adventures

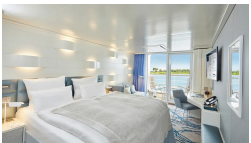
wildearth-travel.com

info@wildearth-travel.com

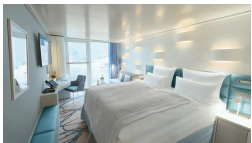
INSIDE YOUR SHIP



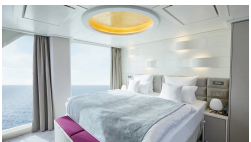
Balcony Cabin



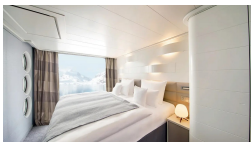
French Balcony Cabin



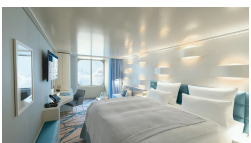
Grand Suite



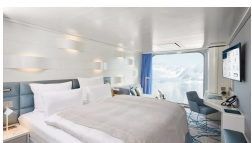
Junior Suite



Outside Cabin



Panoramic Cabin





Wild Earth Travel

Small Ships, Big Adventures

wildearth-travel.com

info@wildearth-travel.com

PRICING

06-Jul-2026 to 18-Jul-2026

Outside Cabin	11390 EUR pp
Panoramic Cabin	12140 EUR pp
French Balcony Cabin	12730 EUR pp
Balcony Cabin	13540 EUR pp
Junior Suite	17760 EUR pp
Grand Suite	24750 EUR pp

Wild Earth Travel
Small Ships, Big Adventures

0800 945 3327 (within New Zealand) | +64 (0) 3 365 1355 | **1800 107 715** (within Australia)

info@wildearth-travel.com | **wildearth-travel.com**