

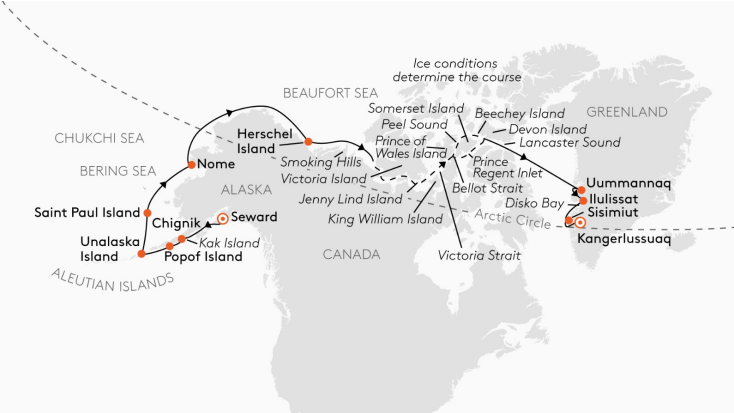


Wild Earth Travel
Small Ships, Big Adventures

wildeath-travel.com **info@wildeath-travel.com**

EXPEDITION NORTHWEST PASSAGE - THE EPITOME OF PIONEERING SPIRIT

Embark on an extraordinary cruise that traces a legendary waterway, blending awe-inspiring solitude with daring exploration along a route mastered by only a few ships. This journey, shaped by weather and ice, offers an active Arctic adventure with Zodiac excursions and hikes, promising sightings of polar bears, musk oxen, Arctic foxes, and whales in their natural realm. Starting in Seward, Alaska, the voyage navigates the rugged Alaska Peninsula and Aleutian Islands, ventures through the Bering and Chukchi Seas, and braves the iconic Northwest Passage from the Beaufort Sea to Lancaster Sound, featuring remote stops like Herschel Island, Victoria Strait, and Beechey Island. The expedition concludes along Greenland's stunning west coast, with visits to Uummannaq, Ilulissat, and Disko Bay, before ending in Kangerlussuaq--a trip where the route itself, rich in natural wonders and Arctic mystique, becomes the ultimate destination.



ITINERARY

Thu, 06.08.2026 Seward/Alaska/USA

departure 21.00 hrs

Fri, 07.08.2026 Relaxation at sea

Sat, 08.08.2026 - Mon, 10.08.2026 Alaska Peninsula and Aleutian Islands/USA

(cruising off Kak Island, Chignik, Popof Island, Unalaska Island)

In 1906, Roald Amundsen achieved the first complete passage of the Northwest Passage. Now, you too can take on this pioneering endeavour with the HANSEATIC inspiration. The first chapters of your expedition weeks lie along the coast of the Alaskan Peninsula. Cruising by Kak Island, the bird rock ignites your anticipation for upcoming adventures. "Strong wind" is the meaning of Chignik in the Alutiq language. Gain insights into life in this small fishing village with its roughly 80 inhabitants. The volcanic island chain of the Aleutians stretches in a wide arc into the Pacific. Here, on Popof Island, you



will visit the home of bison. Bald eagles, however, reign supreme in the skies. Their distinctive call over Unalaska Island invariably draws your gaze upward.

Tue, 11.08.2026 Saint Paul Island/Pribilof Islands

A colony of northern fur seals may greet you during a hike with your experts on St. Paul Island - a tantalising preview of further intense encounters with the surprisingly diverse wildlife of this remote region.

Wed, 12.08.2026 Relaxation at sea/Cruising in the Bering Sea

As you journey through the Bering Sea, keep a keen eye out for whales, which can be easily observed from the expansive open deck areas.

Thu, 13.08.2026 Nome

What constitutes the rich experiences on this passage for you was gold to Alaska in the early 1900s. The town of Nome is still imbued with the spirit of the bygone gold rush era: abandoned steam locomotives, tracks, and gold dredges contribute to this atmosphere.

Fri, 14.08.2026 - Sun, 16.08.2026 Relaxation at sea/Cruising through the Chukchi Sea and Beaufort Sea

As you navigate through the Chukchi Sea and the Beaufort Sea, the excitement on board rises, for now lies before you the lifelong dream and magnet for countless adventurers and explorers...

Mon, 17.08.2026 - Sun, 30.08.2026 Adventure in the Northwest Passage - from the Beaufort Sea to Lancaster Sound

(including Herschel Island/ Canada, Smoking Hills, Victoria Island, Jenny Lind Island, cruising in the Victoria Strait, cruising in Peel Sound, Prince of Wales Island, Beechey Island, Devon Island)

The Northwest Passage Adventure: To this day, captivating legends surround

this famous sea route. The journey commences with the rarely visited Herschel Island. Depending on local conditions, you'll explore the former whaling station. With a bit of luck, you might be greeted by rough-legged hawks, and perhaps even catch a glimpse of the elusive Arctic fox. In Franklin Bay, alongside the history of the eponymous polar explorer, you will encounter the phenomenon of the Smoking Hills. These hills owe their name to pyrite-containing rock layers that have self-ignited. A Zodiac ride offers you unique perspectives on this mystical spectacle. On Victoria Island, named after the British Queen, you may be fortunate enough to observe imposing musk oxen, weighing up to 400 kg. Will you spot polar bears here as well? Look forward to astonishing insights into the lifestyle and history of the Inuit. For centuries, the area around Cambridge Bay was a summer meeting place for families of the "Copper Eskimos," named after their copper tools. As a silent witness to the daring of Roald Amundsen, the wreck of his research ship "Maud" lay here in the ice for around 90 years before being returned to Norway in 2018. The echo of a great voice resonates on Jenny Lind Island: The island is named after a 19th-century Swedish opera singer lovingly called the "Nightingale." Here, you may be surprised by northern residents like snow hares, Arctic foxes, and caribou. Cruising in the Victoria Strait, the dramatic landscape becomes a mirror of moving history. At the narrow entrance, the long-lost ships of the Franklin Expedition, which unsuccessfully sought the Northwest Passage in 1845, were once suspected to lie. One of these ships, the "Terror," was located in Terror Bay in 2016, about 100 km further south than previously assumed. With your experts on board, you'll delve into the fate and relentless courage of those who braved the elements back then. Whether your journey continues through Peel Sound will be decided by the ice - it sets the pace as the HANSEATIC inspiration safely navigates through the island labyrinth to the next destinations. Only a few ships are capable of this, requiring top-notch equipment and an experienced crew. Zodiac rides and landings in the habitats of whales, seals, and polar bears are always possible. Prince of Wales Island, for instance, invites you to a hike in pristine nature. Follow in the footsteps of former explorers on Beechey Island. A stroll to the graves of the Franklin Expedition members makes the historical significance palpable. On the largest uninhabited island on Earth, Devon Island, you are greeted by vast wilderness. An abandoned Royal Canadian Mounted Police station enhances the sense of quiet seclusion. Once the ship sets course for Greenland from Lancaster Sound, you've done it: You are among the few who can claim to have conquered the Northwest Passage.

Mon, 31.08.2026 Relaxation at sea

Tue, 01.09.2026 - Thu, 03.09.2026 West coast of Greenland



Wild Earth Travel

Small Ships, Big Adventures

wildearth-travel.com

info@wildearth-travel.com

(Uummannaq, Ilulissat, Disko Bay, Sisimiut)

The final act of your adventure unfolds along the west coast of Greenland. Small but exquisite, Uummannaq nestles at the base of a majestic, heart-shaped mountain. The awe-inspiring Sermeq Kujalleq glacier near Ilulissat is the "birthplace" of approximately 10% of Greenland's icebergs. Marvel at the glittering ice masses that gather here during a hike to the ice fjord. You will then witness a spectacular natural phenomenon: colossal icebergs drift majestically through the shimmering splendour of Disko Bay - and you, observing this event from the deck, will find yourself right in the midst of it all aboard a Zodiac. An atmospheric finale to your expedition awaits in Sisimiut, where houses are scattered over several hills. Nearly a whole month dotted with milestones of maritime history is now behind you - the ensuing wealth of life experiences and cherished memories will linger for a long time.

[Fri, 04.09.2026 Kangerlussuaq/Greenland](#)

arrival 6.00 hrs Charter flight from Kangerlussuaq

Please note:

This expedition is a very demanding cruise to organise and sail. All of our experience and careful preparation notwithstanding, the actual itinerary depends on official approvals and rules, as well as the weather and ice conditions, which may make it necessary to change the itinerary. The natural experiences and animal sightings described are possibilities and are not guaranteed. We will do everything in our power to ensure that this cruise takes place as advertised, but wish to inform you of the flexibility this requires. The captain will decide on the best possible alternative depending on local conditions.



0800 945 3327 (within New Zealand) | +64 (0) 3 365 1355 | **1800 107 715** (within Australia)

info@wildearth-travel.com | wildearth-travel.com

Wild Earth Travel

Small Ships, Big Adventures



wildearth-travel.com

info@wildearth-travel.com

YOUR SHIP: HANSEATIC INSPIRATION/NATURE/SPIRIT

YOUR SHIP:	Hanseatic Inspiration/Nature/Spirit
VESSEL TYPE:	Expedition
LENGTH:	138 m
PASSENGER CAPACITY:	230
BUILT/REFURBISHED:	2021

The HANSEATIC inspiration, a small, state-of-the-art expedition ship with a maximum of 230 guests, offers a perfect blend of adventure and comfort for explorers seeking to uncover the world's wonders. As an international vessel conducting cruises in both English and German, it brings over 30 years of expertise from a market leader in German-speaking countries to every journey. Each expedition is a masterpiece, passionately crafted to reveal far-flung worlds--be it icy realms, tropical paradises, wildlife havens, or cultural gems--making every voyage a unique discovery aboard this exceptional ship.

Features of all cabins and suites

An ocean view with even more: exclusively outside cabins and suites, almost all with balconies or French balconies

Spaciously designed - enjoy a relaxing stay in rooms from 21 m²/226 ft² up to 71 m²/764 ft² in size

Exceptionally equipped - for example, with binoculars, Nordic Walking poles, air conditioning, coffee machine and mini bar (free of charge) and 24-hour cabin service

Separable beds

Rain shower and heated wall in bathroom (e.g. for towels and

wet parkas)

Extensive infotainment with live broadcast and recordings of expert presentations, forwardview camera, navigation chart, films and much more

Restaurants

Aboard the HANSEATIC inspiration, a new kind of freedom blends adventure and pleasure with a culinary journey across three exceptional restaurants. The spacious HANSEATIC Restaurant offers flexible mealtimes and a free choice of seating, serving a daily-changing menu of global flavors inspired by local specialties, paired with fine wines and supported by attentive 24-hour cabin service. At the Lido Restaurant, guests can savor breakfast under the open sky or enjoy a perfectly grilled steak from the outdoor barbecue, complete with panoramic views and an open show kitchen. The specialty restaurant Nikkei fuses fine Japanese creations with modern Peruvian cuisine, delivering a unique dining experience that elevates exploration to new heights--all while bars in the Observation Lounge and HanseAtrium offer favorite drinks against stunning backdrops, from Nordic fjords to icy Antarctic vistas.

Fitness and Wellness

On the HANSEATIC inspiration, an extraordinary time out awaits after thrilling Zodiac rides, challenging hikes, or Arctic adventures. Unwind in the Ocean Spa, where a Finnish sauna with stunning ocean views, a gentle steam sauna, an ice fountain, and a relaxation room rejuvenate your senses, complemented by professional massages, cosmetic treatments, and eco-friendly products made from natural, vegan ingredients.

Wild Earth Travel

Small Ships, Big Adventures

0800 945 3327 (within New Zealand) | +64 (0) 3 365 1355 | 1800 107 715 (within Australia)

info@wildearth-travel.com | wildearth-travel.com

Wild Earth Travel

Small Ships, Big Adventures



wildearth-travel.com

info@wildearth-travel.com

Stay active in the 100 m² fitness room or separate course room--both with ocean vistas--guided by a fitness coach offering personalized advice and a variety of courses, either indoors or on deck. The pool area, with its flexible canopy, invites relaxation year-round, featuring water loungers, a whirlpool, and a bar, ensuring a perfect blend of indulgence and revitalization against the backdrop of the open sea.

Knowledge

Shore excursions and Zodiac rides come alive with deeper context through fascinating presentations in the HanseAtrium, a high-tech lounge where experts share daily precaps and recaps, doubling as an atmospheric evening bar for films and discussions. The Ocean Academy enhances the journey with a Study Wall and interactive poster of scientific insights, microscopes for exploring hidden wonders alongside experts, and Study Seats--with swivel touchscreens--for personal dives into science. Supported by travel diaries and destination videos, this immersive experience broadens horizons with cutting-edge tools and expertise.



expertise.

Wild Earth Travel

Small Ships, Big Adventures

0800 945 3327 (within New Zealand) | +64 (0) 3 365 1355 | 1800 107 715 (within Australia)

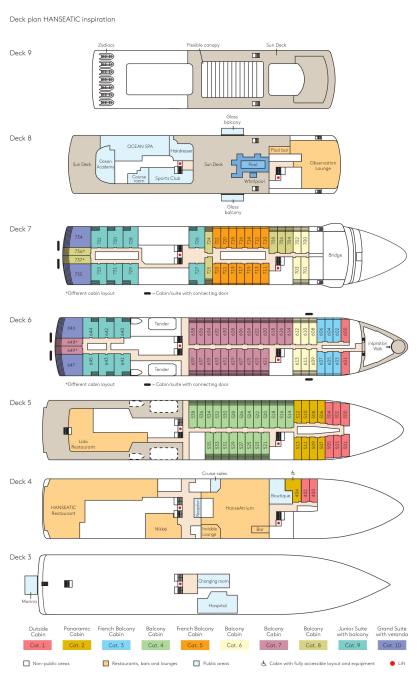
info@wildearth-travel.com | wildearth-travel.com



wildearth-travel.com

info@wildearth-travel.com

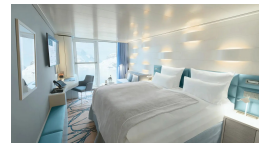
INSIDE YOUR SHIP



Balcony Cabin



French Balcony Cabin



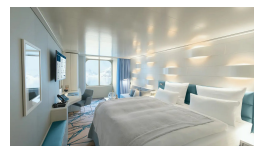
Grand Suite



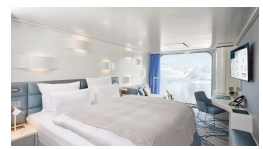
Junior Suite



Outside Cabin



Panoramic Cabin





Wild Earth Travel

Small Ships, Big Adventures



wildearth-travel.com

info@wildearth-travel.com

PRICING

06-Aug-2026 to 04-Sep-2026

Outside Cabin	24990 EUR pp
Panoramic Cabin	24990 EUR pp
French Balcony Cabin	29330 EUR pp
Balcony Cabin	31550 EUR pp
Junior Suite	0 pp
Grand Suite	0 pp

Optional extras & upgrades

Optional excursions available. Please get in touch for more information.



Wild Earth Travel

Small Ships, Big Adventures

0800 945 3327 (within New Zealand) | +64 (0) 3 365 1355 | 1800 107 715 (within Australia)

info@wildearth-travel.com | wildearth-travel.com