



EXPEDITION NORTH-WEST GREENLAND: UNTAMED HEART OF THE ARCTIC

Expedition to the far north: the world's largest island has so far kept many secrets to itself between the icy coast and tundra. Be inspired by the wildlife, Inuit culture and history of the region on this polar adventure.



ITINERARY

Thu, 08.07.2027 Charter flight from Germany to Kangerlussuaq

Kangerlussuaq/Greenland, departure 21.00 hrs

Fri, 09.07.2027 Relaxation at sea

Sat, 10.07.2027 - Mon, 12.07.2027 West coast of Greenland

(Eqip Sermia Glacier, Uummannaq, Storoen, Kangarsuatsiaq)

Along the west coast of Greenland, every day brings you new Arctic adventures in the realm of the Inuit. When your expedition ship glides through the world of ice, whales and seals can appear at any time to put on a special natural show.

Greenland's character is shaped by majestic high mountains and breathtaking glaciers. As you cruise off the Eqip Sermia Glacier, you can already see its impressive ridge that is approximately 7 km (4.3 mi.) long. If the weather permits, you can get close to it in the Zodiac or go ashore on the opposite bank - for special perspectives to marvel at the sheer white wall of ice.



Wild Earth Travel

Small Ships, Big Adventures

wildearth-travel.com

info@wildearth-travel.com

Uummannaq welcomes you with colourful houses and an astonishing creativity of nature. The heart-shaped mountain above the town glows in countless shades of red in the sunlight. In the small settlement, a museum recalls the ice expeditions of Alfred Wegener, a German who conducted research in Greenland. A hike with your experts will take you to "Santa's summer house", the setting of a Danish TV series.

A Zodiac landing on the so-called desert island of Storöen gives the impression of being from another world. A unique play of colours from ochre to red pervades this geological treasure of Greenland and its landscape reminiscent of Mars. It's the ideal terrain for a hike in the tundra and an excursion with your experts on how garnet crystals and glacial striations develop.

Life in Greenland is shaped by fishing and hunting - and the same goes for Kangersuatsiaq on a small island in the Upernivik archipelago. Far away from modern urban life, you can immerse yourself in the Nordic traditions found in the colourful houses and natural harbour. It's a wild, raw beauty - typical for west Greenland.

Tue, 13.07.2027 - Thu, 15.07.2027 North-west coast of Greenland

(Qaanaaq, Siorapaluk, Old Thule/North Star Bay, Cape York)

Breathe in the fresh air. Let your gaze wander over the icy landscape. Experience profound moments of silence. On the north-west coast of Greenland, you will leave the urban world far behind you as the Zodiacs take you to the remote settlements.

Early Inuit groups settled in the Qaanaaq region over 4,000 years ago. The present-day town was established in 1953, when the Danish government forcibly relocated the residents of the original settlement here to make way for a US airbase. Your walk will be accompanied by the barking of the huskies, which are just as much a part of life here as the kayaks.

Life in the village of Siorapaluk is almost unbelievably isolated. The country's most northerly settlement lies on a narrow beach at the foot of some gently rolling mountains. The approximately 80 inhabitants earn their living from hunting and fishing. With luck, your travel diary will include encounters with seals, musk oxen and reindeer.

In 1909, Knud Rasmussen founded a missionary station at North Star Bay and later Old Thule, the world's most northerly trading post. He used the profits to finance his Thule expeditions to research the Inuit culture. Walk in his footsteps as you visit the old turf houses. Your experts will not only show you history but also the present: they use the example of the US American Pituffik Space Base to shed light on the influence of the world powers in the Arctic.

Cruising off Cape York brings breathtaking views of bizarre ice formations. A rocky crest bears a memorial to the American explorer Robert Edwin Peary, who set out from here on his North Pole expeditions at the end of the 19th century. There is hardly a more beautiful panorama from the deck: large icebergs from the mighty outlet glaciers of west Greenland accumulate here in the "iceberg graveyard" after their 900 km (559 mi.) journey. Also keep an eye out for little auks, black guillemots and glaucous gulls, which nest on the cliffs.

Fri, 16.07.2027 Relaxation at sea

Sat, 17.07.2027 - Mon, 19.07.2027 West coast of Greenland

(Qeqertarsuaq, Ilulissat, Disko Bay, Sisimiut)

In the magical Arctic light, the wonders of the west coast of Greenland will be illuminated north of the Arctic Circle. A vast and silent landscape, home to relics of a 4,500-year-old culture - seemingly almost forgotten by the world.

Qeqertarsuaq, founded on Disko Island in 1773, is particularly full of character - enter the small town through the whalebone gateway. Explore Godhavn - the "good harbour", Qeqertarsuaq's translation - with your experts or wander through the Arctic tundra to the Windy Valley. The chances of seeing whales are always very good in these waters.

Another eternal scene can be found in Ilulissat when the glacier calves in the world-famous ice fjord. On a hike with your experts, enjoy the glittering, shimmering ice masses, which appear in many different towering formations. An incredible UNESCO World Heritage Site.

Disko Bay will provide even more memorable moments: ice sculptures in all manner of forms drift slowly through the vast area. Enjoy this natural spectacle from your front-row seat on deck - or take a Zodiac ride to the centre of the action. Illuminated by the sunlight, the ice gleams in a fascinating play of colours from white to azure blue.

Wild Earth Travel
Small Ships, Big Adventures

0800 945 3327 (within New Zealand) | +64 (0) 3 365 1355 | **1800 107 715** (within Australia)

info@wildearth-travel.com | wildearth-travel.com



In Sisimiut, where the remarkable old town seems like a museum village, the oldest settlement traces date back over 4,000 years, deep into the Saqqaq culture. Join your experts to hike over rocks and through tundra - to relics from the whaling era. A hike to Tele Island will also take you back thousands of years to see ancient ruins and graves, crowned by magnificent views of Sisimiut and the coast.

[Tue, 20.07.2027 Kangerlussuaq/Greenland](#)

Arrival 06.00 hrs
Charter flight from Kangerlussuaq to Germany

[Please note:](#)

Itineraries are subject to change.



Wild Earth Travel

Small Ships, Big Adventures

wildearth-travel.com

info@wildearth-travel.com

YOUR SHIP: HANSEATIC INSPIRATION/NATURE/SPIRIT

YOUR SHIP:	Hanseatic
	Inspiration/Nature/Spirit
VESSEL TYPE:	Expedition
LENGTH:	138 m
PASSENGER CAPACITY:	230
BUILT/REFURBISHED:	2021

The HANSEATIC inspiration, a small, state-of-the-art expedition ship with a maximum of 230 guests, offers a perfect blend of adventure and comfort for explorers seeking to uncover the world's wonders. As an international vessel conducting cruises in both English and German, it brings over 30 years of expertise from a market leader in German-speaking countries to every journey. Each expedition is a masterpiece, passionately crafted to reveal far-flung worlds--be it icy realms, tropical paradises, wildlife havens, or cultural gems--making every voyage a unique discovery aboard this exceptional ship.

Features of all cabins and suites

An ocean view with even more: exclusively outside cabins and suites, almost all with balconies or French balconies

Spaciously designed - enjoy a relaxing stay in rooms from 21 m²/226 ft² up to 71 m²/764 ft² in size

Exceptionally equipped - for example, with binoculars, Nordic Walking poles, air conditioning, coffee machine and mini bar (free of charge) and 24-hour cabin service

Separable beds

Rain shower and heated wall in bathroom (e.g. for towels and

wet parkas)

Extensive infotainment with live broadcast and recordings of expert presentations, forwardview camera, navigation chart, films and much more

Restaurants

Aboard the HANSEATIC inspiration, a new kind of freedom blends adventure and pleasure with a culinary journey across three exceptional restaurants. The spacious HANSEATIC Restaurant offers flexible mealtimes and a free choice of seating, serving a daily-changing menu of global flavors inspired by local specialties, paired with fine wines and supported by attentive 24-hour cabin service. At the Lido Restaurant, guests can savor breakfast under the open sky or enjoy a perfectly grilled steak from the outdoor barbecue, complete with panoramic views and an open show kitchen. The specialty restaurant Nikkei fuses fine Japanese creations with modern Peruvian cuisine, delivering a unique dining experience that elevates exploration to new heights--all while bars in the Observation Lounge and HanseAtrium offer favorite drinks against stunning backdrops, from Nordic fjords to icy Antarctic vistas.

Fitness and Wellness

On the HANSEATIC inspiration, an extraordinary time out awaits after thrilling Zodiac rides, challenging hikes, or Arctic adventures. Unwind in the Ocean Spa, where a Finnish sauna with stunning ocean views, a gentle steam sauna, an ice fountain, and a relaxation room rejuvenate your senses, complemented by professional massages, cosmetic treatments, and eco-friendly products made from natural, vegan ingredients.

Wild Earth Travel
Small Ships, Big Adventures

0800 945 3327 (within New Zealand) | +64 (0) 3 365 1355 | **1800 107 715** (within Australia)

info@wildearth-travel.com | **wildearth-travel.com**



Wild Earth Travel

Small Ships, Big Adventures

wildearth-travel.com

info@wildearth-travel.com

Stay active in the 100 m² fitness room or separate course room--both with ocean vistas--guided by a fitness coach offering personalized advice and a variety of courses, either indoors or on deck. The pool area, with its flexible canopy, invites relaxation year-round, featuring water loungers, a whirlpool, and a bar, ensuring a perfect blend of indulgence and revitalization against the backdrop of the open sea.

Knowledge

Shore excursions and Zodiac rides come alive with deeper context through fascinating presentations in the HanseAtrium, a high-tech lounge where experts share daily precaps and recaps, doubling as an atmospheric evening bar for films and discussions. The Ocean Academy enhances the journey with a Study Wall and interactive poster of scientific insights, microscopes for exploring hidden wonders alongside experts, and Study Seats--with swivel touchscreens--for personal dives into science. Supported by travel diaries and destination videos, this immersive experience broadens horizons with cutting-edge tools and expertise.



expertise.

Wild Earth Travel

Small Ships, Big Adventures

0800 945 3327 (within New Zealand) | +64 (0) 3 365 1355 | **1800 107 715** (within Australia)

info@wildearth-travel.com | **wildearth-travel.com**



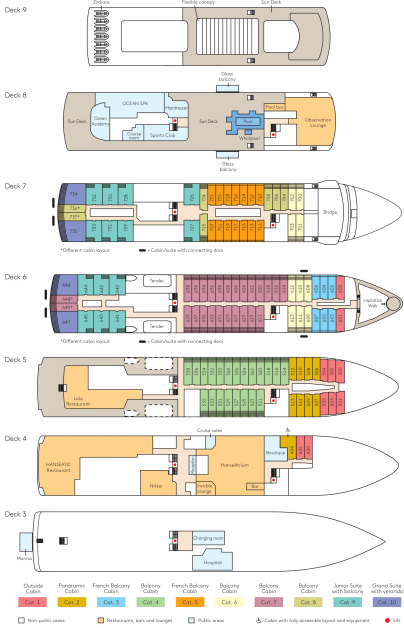
Wild Earth Travel
Small Ships, Big Adventures

wildearth-travel.com

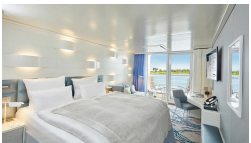
info@wildearth-travel.com

INSIDE YOUR SHIP

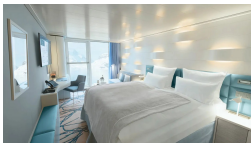
Deck plan HANSEATIC inspiration



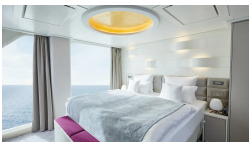
Balcony Cabin



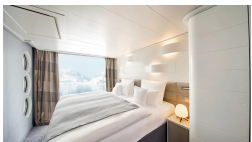
French Balcony Cabin



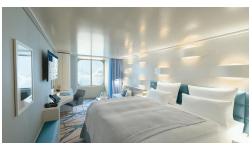
Grand Suite



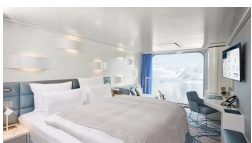
Junior Suite



Outside Cabin



Panoramic Cabin





Wild Earth Travel

Small Ships, Big Adventures

wildearth-travel.com

info@wildearth-travel.com

PRICING

08-Jul-2027 to 20-Jul-2027

Outside Cabin	10590 EUR pp
Panoramic Cabin	10590 EUR pp
French Balcony Cabin	12170 EUR pp
Balcony Cabin	13190 EUR pp
Junior Suite	18290 EUR pp
Grand Suite	24140 EUR pp