



**Wild Earth Travel**  
*Small Ships, Big Adventures*

**wildearth-travel.com      info@wildearth-travel.com**

# EXPEDITION GREENLAND, NEWFOUNDLAND AND ST LAWRENCE RIVER

Lustrous ice, lonely fjords and the river of life: encounter the wonders of nature in the vast expanse - topped off with an adventure through the locks. An expedition from the Greenland Arctic to the French heritage laid out by North America's mighty river system.

Bi-Lingual cruise



## ITINERARY

Tue, 20.07.2027 Charter flight from Germany to Kangerlussuaq

Kangerlussuaq/Greenland, departure 21.00 hrs

Wed, 21.07.2027 - Fri, 23.07.2027 West coast of Greenland

(Sisimiut, Ilulissat, Disko Bay, Qeqertarsuaq, fjords of Greenland)

In the magical Arctic light, the wonders of the west coast of Greenland will be illuminated north of the Arctic Circle. A vast and silent landscape, home to relics of a 4,500-year-old culture - seemingly almost forgotten by the world.

In Sisimiut, where the remarkable old town seems like a museum village, the oldest settlement traces date back over 4,000 years, deep into the Saqqaq culture. Join your experts to hike over rocks and through tundra - to relics from the whaling era. A hike to Tele Island will also take you back thousands of years to see ancient ruins and graves, crowned by magnificent views of Sisimiut and the coast.

Another eternal scene can be found in Ilulissat when the glacier calves in the





# Wild Earth Travel

*Small Ships, Big Adventures*

**wildearth-travel.com**

**info@wildearth-travel.com**

world-famous ice fjord. On a hike with your experts, enjoy the glittering, shimmering ice masses, which appear in many different towering formations. An incredible UNESCO World Heritage Site.

Disko Bay will provide even more memorable moments: ice sculptures in all manner of forms drift slowly through the vast area. Enjoy this natural spectacle from your front-row seat on deck - or take a Zodiac ride to the centre of the action. Illuminated by the sunlight, the ice gleams in a fascinating play of colours from white to azure blue.

Qeqertarsuaq, founded on Disko Island in 1773, is particularly full of character - enter the small town through the whalebone gateway.

Explore Godhavn - the "good harbour", Qeqertarsuaq's translation - with your experts or wander through the Arctic tundra to the Windy Valley. The chances of seeing whales are always very good in these waters.

Your ship will chart a flexible course through the fjords of Greenland amid majestic mountain ranges and the deeply carved coastline. The Zodiacs will be used repeatedly. With a little luck, you might spot whales, surrounded by the colossal scenery.

## Sat, 24.07.2027 - Tue, 27.07.2027 South coast of Greenland

(Qassarsuk, Unartoq)

Natural wonders lie ahead in the south coast of Greenland. The crew - experienced in polar voyages - react flexibly, always with the aim to offer you the greatest possible experience.

The small settlement of Qassarsuk will take you back around 1,000 years and bring the history of the Vikings to life. It was here that Eric the Red founded the Greenland's first Viking settlement around the year 985. Ruined Norman walls and replicas of Thjodhild's church and Erik's long house bring the Norsemen back to life - as do the excursions by your on-board experts about the colonisation of Greenland.

Immerse yourself in nature: the bath in the geothermal springs of Unartoq offers you a relaxing view of the bay as well as the rocky and hilly panorama. Perhaps sparkling icebergs will add the spectacular icing on the cake as you savour the moment with all your senses.

## Wed, 28.07.2027 Relaxation at sea

## Thu, 29.07.2027 - Sat, 31.07.2027 Newfoundland and Labrador/Canada

(L'Anse aux Meadows, Red Bay, Woody Point)

Remote locations invite you to go hiking. Rivers rush through the landscape like lifelines. The home of moose, wolves and caribou. The coast is also home to seals and whales: Newfoundland and Labrador, which until a few years ago could only be reached by seaplane or dog sled.

Trace the Icelandic/Greenlandic settlers as you explore the excavations at L'Anse aux Meadows independently. The remains of a large Viking settlement were discovered here in the 1970s. The archaeological site at the northernmost tip of Newfoundland is now a UNESCO World Heritage Site and an open-air museum of sorts, with a Viking boat, a chieftain's house, a church and a fairground. Reconstructed peat houses illustrate life around the year AD 1,000.

The fishing village of Red Bay seems to have been forgotten by the world. The sheltered natural harbour on the coast of Labrador was once a centre of Basque whaling. It is not known why whaling stopped here. The most likely explanation is that the site was abandoned after the whales were depleted by over-hunting. Today, a museum provides fascinating insights.

Off to the heart of the Gros Morne National Park: surrounded by fjords, bays, lakes, plateaus and mountain valleys, the small town of Woody Point is the perfect starting point for your outdoor activities in the wilderness. Idyllically situated on the shore, the buildings from the early days of the 19th century, some of which are historic, tell you about the heritage of fishermen and loggers. With around 280 inhabitants, there are hardly more people living here than there are guests on your expedition ship.

## Sun, 01.08.2027 Relaxation at sea

(Gulf of Saint Lawrence)  
Arrival at the St Lawrence River

## Mon, 02.08.2027 Tadoussac

9.00 - 0.00 hrs

Wild Earth Travel  
*Small Ships, Big Adventures*

**0800 945 3327** (within New Zealand) | +64 (0) 3 365 1355 | **1800 107 715** (within Australia)

info@wildearth-travel.com | wildearth-travel.com





**wildearth-travel.com**

**info@wildearth-travel.com**

#### Thu, 05.08.2027 Lock adventure on the St Lawrence River

##### Daytime passage through seven locks

A highway of water: the St Lawrence River is a transport route, lifeline and the "home of whales" in North America. It connects the Great Lakes with the Atlantic Ocean. During your extraordinary passage, the ship will have to negotiate seven locks with a difference in height of up to 15 m (49 ft). Exciting manoeuvres that you can experience directly during the day: since your ship is built for expeditions and direct encounters with nature, you can use the many open decks to observe the lock passages. The Observation Lounge on Deck 8 also offers you a beautiful view of the action ahead. With your lock adventure on the St Lawrence River, you will experience a nautical feat that only a few ships can accomplish.

#### Fri, 06.08.2027 Passage through the Thousand Islands

##### Cruising on Lake Ontario

Where the St Lawrence River creates the border between the United States and Canada, your small expedition ship will pass through a photogenic labyrinth of skerries. Cruising through the Thousand Islands offers highly diverse island contrasts. In fact, there are not just 1,000, but more than 1,800 islands.

Each island is different: some are covered in green forests, some have an English castle or colourful cottages - and the best views of them can be enjoyed from the many open deck areas.

Whether it's a drinking water reservoir, a recreational area or a rare ecosystem, experiencing Lake Ontario makes you aware of its diversity. The eastern part is lined with dunes and many nesting sites for coastal and migratory birds. The western side of the lake is characterised by urban cities like Toronto. The southern side is particularly fertile, with fruit-growing areas and vineyards.

#### Sat, 07.08.2027 Toronto/Lake Ontario/Canada

Arrival 7.00 hrs

Please Note:

The world's southernmost population of beluga whales lives in the waters off Tadoussac. Where the Saguenay Fjord joins the St Lawrence River, the village of Tadoussac, with its 800 inhabitants, welcomes you. One of the oldest places in Canada, it was settled by Europeans as early as the 17th century. Colourful houses with restaurants and small shops line the main street. Surrounded by green wooded hills, the pace of life here seems to be more relaxed. The proximity to expansive nature, rolling coastlines and the river makes it a popular starting point for outdoor activities of all kinds.

#### Tue, 03.08.2027 Saguenay Cruising on the Saguenay Fjord

Jacques Cartier first set foot in the area around Saguenay in 1535. The explorer was amazed by the vastness of the region and named it "Kingdom". The reference has stuck, and Saguenay-Lac-Saint-Jean never misses an opportunity to remind its visitors of this with a variety of cultural and historical activities. It was only in 2002 that the present-day city of Saguenay was officially created by merging the surrounding small towns and communities.

In one of the largest side branches of the St Lawrence River, the Saguenay Fjord, nature is particularly vibrant and beautiful. Keep an eye out for whales. With a little luck, you can see belugas as you cruise. These whales can be found here year-round hunting for fish and plankton. The open deck areas and the deck tour at the bow are the best places to observe them. The mighty mountain landscapes frame the scenery and make the passage an unforgettable experience.

#### Wed, 04.08.2027 Quebec

8.00 - 19.00 hrs

On your approach along the impressive the St Lawrence River, an iconic structure already provides a hint of Quebec's French flair: the Chateau Frontenac, a hotel in the style of a Norman castle, sits majestically high above the city. Take a fascinating journey of discovery through the picturesque old town: wander down the narrow, cobbled lanes, past traditional French architecture, charming boutiques and bistros. The ensemble is enclosed by a centuries-old city wall, which was declared a UNESCO World Heritage Site in 1985. In addition to the slower pace of life, Quebec is characterised by a vibrant cultural scene in which art galleries, theatres and street artists come together.





# Wild Earth Travel

*Small Ships, Big Adventures*

**wildearth-travel.com**

**info@wildearth-travel.com**

Itineraries are subject to change.



**Wild Earth Travel**

*Small Ships, Big Adventures*

**0800 945 3327** (within New Zealand) | +64 (0) 3 365 1355 | **1800 107 715** (within Australia)

info@wildearth-travel.com | **wildearth-travel.com**





**Wild Earth Travel**

*Small Ships, Big Adventures*

**wildearth-travel.com**

**info@wildearth-travel.com**

## YOUR SHIP: HANSEATIC INSPIRATION/NATURE/SPIRIT

<b>YOUR SHIP:</b>	<b>Hanseatic</b>
<b>VESEL TYPE:</b>	<b>Inspiration/Nature/Spirit</b>
<b>LENGTH:</b>	<b>Expedition</b>
<b>PASSENGER CAPACITY:</b>	<b>138 m</b>
<b>BUILT/REFURBISHED:</b>	<b>230</b>
	<b>2021</b>

The HANSEATIC inspiration, a small, state-of-the-art expedition ship with a maximum of 230 guests, offers a perfect blend of adventure and comfort for explorers seeking to uncover the world's wonders. As an international vessel conducting cruises in both English and German, it brings over 30 years of expertise from a market leader in German-speaking countries to every journey. Each expedition is a masterpiece, passionately crafted to reveal far-flung worlds--be it icy realms, tropical paradises, wildlife havens, or cultural gems--making every voyage a unique discovery aboard this exceptional ship.

Features of all cabins and suites

An ocean view with even more: exclusively outside cabins and suites, almost all with balconies or French balconies

Spaciously designed - enjoy a relaxing stay in rooms from 21 m<sup>2</sup>/226 ft<sup>2</sup> up to 71 m<sup>2</sup>/764 ft<sup>2</sup> in size

Exceptionally equipped - for example, with binoculars, Nordic Walking poles, air conditioning, coffee machine and mini bar (free of charge) and 24-hour cabin service

Separable beds

Rain shower and heated wall in bathroom (e.g. for towels and

wet parkas)

Extensive infotainment with live broadcast and recordings of expert presentations, forwardview camera, navigation chart, films and much more

Restaurants

Aboard the HANSEATIC inspiration, a new kind of freedom blends adventure and pleasure with a culinary journey across three exceptional restaurants. The spacious HANSEATIC Restaurant offers flexible mealtimes and a free choice of seating, serving a daily-changing menu of global flavors inspired by local specialties, paired with fine wines and supported by attentive 24-hour cabin service. At the Lido Restaurant, guests can savor breakfast under the open sky or enjoy a perfectly grilled steak from the outdoor barbecue, complete with panoramic views and an open show kitchen. The specialty restaurant Nikkei fuses fine Japanese creations with modern Peruvian cuisine, delivering a unique dining experience that elevates exploration to new heights--all while bars in the Observation Lounge and HanseAtrium offer favorite drinks against stunning backdrops, from Nordic fjords to icy Antarctic vistas.

Fitness and Wellness

On the HANSEATIC inspiration, an extraordinary time out awaits after thrilling Zodiac rides, challenging hikes, or Arctic adventures. Unwind in the Ocean Spa, where a Finnish sauna with stunning ocean views, a gentle steam sauna, an ice fountain, and a relaxation room rejuvenate your senses, complemented by professional massages, cosmetic treatments, and eco-friendly products made from natural, vegan ingredients.

**Wild Earth Travel**  
*Small Ships, Big Adventures*

**0800 945 3327** (within New Zealand) | +64 (0) 3 365 1355 | **1800 107 715** (within Australia)

info@wildearth-travel.com | **wildearth-travel.com**





# Wild Earth Travel

*Small Ships, Big Adventures*

**wildearth-travel.com**

**info@wildearth-travel.com**

Stay active in the 100 m<sup>2</sup> fitness room or separate course room--both with ocean vistas--guided by a fitness coach offering personalized advice and a variety of courses, either indoors or on deck. The pool area, with its flexible canopy, invites relaxation year-round, featuring water loungers, a whirlpool, and a bar, ensuring a perfect blend of indulgence and revitalization against the backdrop of the open sea.

#### Knowledge

Shore excursions and Zodiac rides come alive with deeper context through fascinating presentations in the HanseAtrium, a high-tech lounge where experts share daily precaps and recaps, doubling as an atmospheric evening bar for films and discussions. The Ocean Academy enhances the journey with a Study Wall and interactive poster of scientific insights, microscopes for exploring hidden wonders alongside experts, and Study Seats--with swivel touchscreens--for personal dives into science. Supported by travel diaries and destination videos, this immersive experience broadens horizons with cutting-edge tools and expertise.



expertise.

Wild Earth Travel

*Small Ships, Big Adventures*

**0800 945 3327** (within New Zealand) | +64 (0) 3 365 1355 | **1800 107 715** (within Australia)

info@wildearth-travel.com | **wildearth-travel.com**



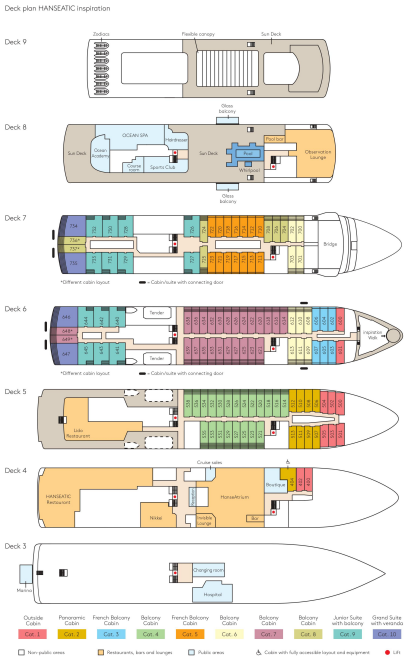


**Wild Earth Travel**  
*Small Ships, Big Adventures*

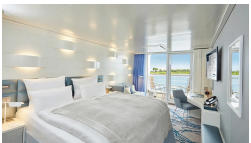
**wildearth-travel.com**

**info@wildearth-travel.com**

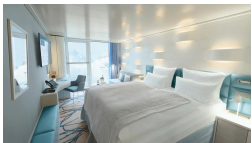
**INSIDE YOUR SHIP**



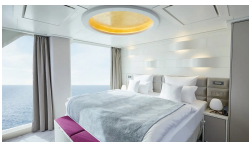
**Balcony Cabin**



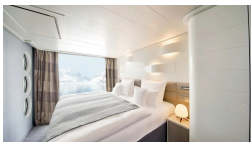
**French Balcony Cabin**



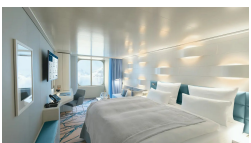
**Grand Suite**



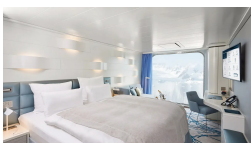
**Junior Suite**



**Outside Cabin**



**Panoramic Cabin**







**Wild Earth Travel**  
*Small Ships, Big Adventures*

**wildearth-travel.com**

**info@wildearth-travel.com**

**PRICING**

20-Jul-2027 to 07-Aug-2027

Outside Cabin	11790 EUR pp
Panoramic Cabin	11790 EUR pp
French Balcony Cabin	14870 EUR pp
Balcony Cabin	16120 EUR pp
Junior Suite	22440 EUR pp
Grand Suite	30540 EUR pp

**Wild Earth Travel**  
*Small Ships, Big Adventures*

**0800 945 3327** (within New Zealand) | +64 (0) 3 365 1355 | **1800 107 715** (within Australia)

info@wildearth-travel.com | **wildearth-travel.com**