



Wild Earth Travel
Small Ships, Big Adventures

wildearth-travel.com info@wildearth-travel.com

EXPEDITION GREENLAND, NEWFOUNDLAND AND NOVA SCOTIA

This cruise promises an adventurous journey along a fresh route, weaving from Greenland's icy landscapes and Inuit culture to the lush expanses of North America. Highlights include marveling at Disko Bay's glittering icebergs from both the deck and Zodiacs, exploring Newfoundland's vast wilderness of fjords and lakes, and experiencing Canada's hidden gem with a pioneering circumnavigation of Cape Breton Island, featuring stops at Louisbourg and Baddeck. The voyage also navigates the narrow Strait of Canso--a feat exclusive to smaller ships--offering a blend of stunning natural beauty and unique cultural encounters, from Greenland's west and south coasts to the French enclave of Saint-Pierre and Miquelon, culminating in Halifax.



ITINERARY

Fri, 04.09.2026 Charter flight to Kangerlussuaq

Kangerlussuaq/Greenland, departure 20.00 hrs

Sat, 05.09.2026 - Wed, 09.09.2026 West coast of Greenland

(Sisimiut, Ilulissat, Disko Bay, Qeqertarsuaq, fjords of Greenland)

From the Arctic Circle to Halifax - this expedition with the HANSEATIC inspiration will give you a new understanding and deep feelings for the unspoilt beauty of the remote Arctic region. Discover the many sides to Greenland, Newfoundland and Nova Scotia: ice, mighty mountain and fjord landscapes as well as traces of the Vikings and Inuit culture. The HANSEATIC inspiration begins its expedition route in Sisimiut on the west coast of Greenland. Follow in the footsteps of the Saqqaq culture and visit the old town, which resembles a museum village. Hike from Ilulissat to the ice fjord, just a taste of what awaits in Disko Bay, where glittering sculptures drift slowly



wildearth-travel.com

info@wildearth-travel.com

through the water - with you at the centre as you cruise and take a Zodiac ride. With its octagonal church and the museum, the settlement of Qeqertarsuaq, which was founded in 1773, tells stories of modern life and the former whaling centre on Disko Island. Your ship will chart a flexible course through the fjords of Greenland. The Zodiacs are put to good use here again. With a little luck, you might spot whales, surrounded by the colossal scenery.

Thu, 10.09.2026 - Fri, 11.09.2026 South coast of Greenland

(Qassarsuk, Unartoq)

Qassarsuk has an interesting history - this is where Erik the Red founded Greenland's first Viking settlement in around 985. In Unartoq, round off your experiences by bathing in the hot springs as you watch the icebergs drift by. The island is best known for its thermal springs. They are created by groundwater that is heated in a fissure in the earth and then flows back to the surface. The springs are described in records as early as the 14th century.

Sat, 12.09.2026 - Sun, 13.09.2026 Relaxation at sea

Mon, 14.09.2026 St John's/Newfoundland/Canada

Newfoundland's capital is not far from Cape Spear¹, the country's most easterly point. One of North America's oldest lighthouses is found here. The city is known for its colourful terraced houses and rich history as well as a unique culture characterised by its Irish, English and Indigenous heritage. One of Newfoundland's most famous landmarks is Signal Hill¹. The hill is located on the north side and offers spectacular views of the harbour. There is also a breathtaking coastal landscape, which you can discover on a coastal hike¹ along the East Coast Trail. The hiking trail descends around 250 m (820 ft) to the sea and offers you pure wilderness.

Tue, 15.09.2026 Saint-Pierre and Miquelon/France

Saint-Pierre and Miquelon is a French overseas territory consisting of a group

of islands off the coast of Newfoundland. With its history during Prohibition in the USA and its long fishing tradition, you will gain fascinating insight into a piece of French culture in North America. Today, Saint-Pierre and Miquelon is best known for its picturesque coastal villages and breathtaking scenery. Experience France in North America.

Wed, 16.09.2026 - Fri, 18.09.2026 Circumnavigation of Cape Breton Island/Nova Scotia/Canada

(with Louisbourg and Baddeck, passage through the Strait of Canso)

Welcome to Cape Breton Island - a premiere destination for the new expedition class. This jewel in the Nova Scotia region awaits you with an abundance of natural beauty, making it a real insider tip. Explore the Cape Breton Highlands National Park¹ or the beautiful Bras d'Or Lake¹ - more insider tips on this extraordinary expedition. With stops in the towns of Louisbourg and Baddeck, you will circumnavigate the island. The circumnavigation is completed with a trip through the Strait of Canso. The waterway takes you from Cape Breton Island to the mainland of Nova Scotia. Enjoy spectacular views of the surrounding landscape from the many open deck areas of the HANSEATIC inspiration.

Sat, 19.09.2026 Halifax/Canada, arrival 7.00 hrs

Please note:

Itineraries are subject to change.



YOUR SHIP: HANSEATIC INSPIRATION/NATURE/SPIRIT

YOUR SHIP:	Hanseatic
VESSEL TYPE:	Inspiration/Nature/Spirit
LENGTH:	Expedition
PASSENGER CAPACITY:	138 m
BUILT/REFURBISHED:	230
	2021

The HANSEATIC inspiration, a small, state-of-the-art expedition ship with a maximum of 230 guests, offers a perfect blend of adventure and comfort for explorers seeking to uncover the world's wonders. As an international vessel conducting cruises in both English and German, it brings over 30 years of expertise from a market leader in German-speaking countries to every journey. Each expedition is a masterpiece, passionately crafted to reveal far-flung worlds--be it icy realms, tropical paradises, wildlife havens, or cultural gems--making every voyage a unique discovery aboard this exceptional ship.

Features of all cabins and suites

An ocean view with even more: exclusively outside cabins and suites, almost all with balconies or French balconies

Spaciously designed - enjoy a relaxing stay in rooms from 21 m²/226 ft² up to 71 m²/764 ft² in size

Exceptionally equipped - for example, with binoculars, Nordic Walking poles, air conditioning, coffee machine and mini bar (free of charge) and 24-hour cabin service

Separable beds

Rain shower and heated wall in bathroom (e.g. for towels and

wet parkas)

Extensive infotainment with live broadcast and recordings of expert presentations, forwardview camera, navigation chart, films and much more

Restaurants

Aboard the HANSEATIC inspiration, a new kind of freedom blends adventure and pleasure with a culinary journey across three exceptional restaurants. The spacious HANSEATIC Restaurant offers flexible mealtimes and a free choice of seating, serving a daily-changing menu of global flavors inspired by local specialties, paired with fine wines and supported by attentive 24-hour cabin service. At the Lido Restaurant, guests can savor breakfast under the open sky or enjoy a perfectly grilled steak from the outdoor barbecue, complete with panoramic views and an open show kitchen. The specialty restaurant Nikkei fuses fine Japanese creations with modern Peruvian cuisine, delivering a unique dining experience that elevates exploration to new heights--all while bars in the Observation Lounge and HanseAtrium offer favorite drinks against stunning backdrops, from Nordic fjords to icy Antarctic vistas.

Fitness and Wellness

On the HANSEATIC inspiration, an extraordinary time out awaits after thrilling Zodiac rides, challenging hikes, or Arctic adventures. Unwind in the Ocean Spa, where a Finnish sauna with stunning ocean views, a gentle steam sauna, an ice fountain, and a relaxation room rejuvenate your senses, complemented by professional massages, cosmetic treatments, and eco-friendly products made from natural, vegan ingredients.



Wild Earth Travel

Small Ships, Big Adventures

wildearth-travel.com

info@wildearth-travel.com

Stay active in the 100 m² fitness room or separate course room--both with ocean vistas--guided by a fitness coach offering personalized advice and a variety of courses, either indoors or on deck. The pool area, with its flexible canopy, invites relaxation year-round, featuring water loungers, a whirlpool, and a bar, ensuring a perfect blend of indulgence and revitalization against the backdrop of the open sea.

Knowledge

Shore excursions and Zodiac rides come alive with deeper context through fascinating presentations in the HanseAtrium, a high-tech lounge where experts share daily precaps and recaps, doubling as an atmospheric evening bar for films and discussions. The Ocean Academy enhances the journey with a Study Wall and interactive poster of scientific insights, microscopes for exploring hidden wonders alongside experts, and Study Seats--with swivel touchscreens--for personal dives into science. Supported by travel diaries and destination videos, this immersive experience broadens horizons with cutting-edge tools and expertise.



expertise.

Wild Earth Travel

Small Ships, Big Adventures

0800 945 3327 (within New Zealand) | +64 (0) 3 365 1355 | **1800 107 715** (within Australia)

info@wildearth-travel.com | **wildearth-travel.com**

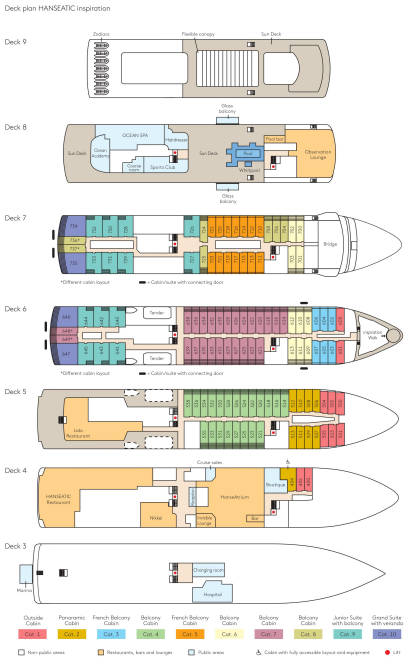


Wild Earth Travel
Small Ships, Big Adventures

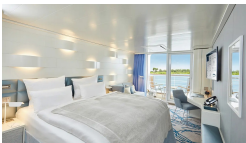
wildearth-travel.com

info@wildearth-travel.com

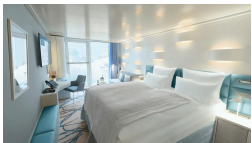
INSIDE YOUR SHIP



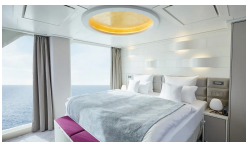
Balcony Cabin



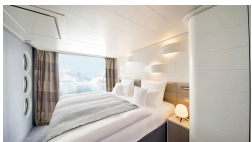
French Balcony Cabin



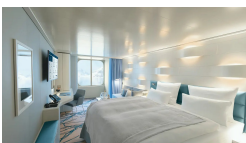
Grand Suite



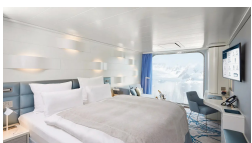
Junior Suite



Outside Cabin



Panoramic Cabin



Wild Earth Travel
Small Ships, Big Adventures

0800 945 3327 (within New Zealand) | +64 (0) 3 365 1355 | **1800 107 715** (within Australia)

info@wildearth-travel.com | **wildearth-travel.com**



Wild Earth Travel

Small Ships, Big Adventures

wildearth-travel.com

info@wildearth-travel.com

PRICING

04-Sep-2026 to 19-Sep-2026

Panoramic Cabin	10890 EUR pp
Outside Cabin	10890 EUR pp
French Balcony Cabin	13350 EUR pp
Balcony Cabin	14200 EUR pp
Junior Suite	18810 EUR pp
Grand Suite	26090 EUR pp

Wild Earth Travel

Small Ships, Big Adventures

0800 945 3327 (within New Zealand) | +64 (0) 3 365 1355 | **1800 107 715** (within Australia)

info@wildearth-travel.com | **wildearth-travel.com**