



Wild Earth Travel

Small Ships, Big Adventures

wildearth-travel.com

info@wildearth-travel.com

EXPEDITION FROM GREENLAND TO CANADA VIA SAINT PIERRE AND MIQUELON

Succumb to the charms of this 16-day expedition cruise aboard Le Champlain, sailing between Iceland and Canada via the stunning landscapes of Greenland. You will embark in Reykjavik, the most northerly capital in the world, lying slightly above the 64th parallel.

You will first travel through the narrow Prins Christian Sund passage, which connects the south-east of Greenland to the south-west. Jagged mountains, rocky cliffs, waterfalls and floating ice form a wonderful wild landscape in which frolic colonies of bearded seals.

After passing in front of the impressive Kujalleq Glacier, you will call at Aappilattoq, a small Inuit village with some one hundred inhabitants, dotted with colourful houses typical of this faraway land.

Le Champlain will head to Canada to call at l'Anse-aux-Meadows, a Viking archeological site from the 11th century listed as a UNESCO World Heritage Site, located north of the Canadian province of Newfoundland. "The Rock" honours its nickname: the mountains here plunge into the clear sea while the fjords slip inland. Although it appears inhospitable, this territory was nonetheless one of the first sites in the New World to become known in Europe. Saint-John's, the capital of the province is one of the oldest anglophone cities in North America. It is nestled in the heart of a stunning natural environment and strolling through its historic core or along its sloping streets lined with colourful houses is an enjoyable

experience.

A little piece of France located off the coast of Canada, the Saint Pierre and Miquelon archipelago has many charms. Here you will discover the lively island of Saint Pierre, its small houses with coloured facades and its natural harbour which sheltered many fishing boats in the past. The second island in the archipelago, Miquelon, will delight lovers of the great outdoors with its vast rolling meadows dotted with small lakes and lined with cliffs that disappear into the northern waters inhabited by seals.

At the mouth of Saguenay River, you will reach Tadoussac. This National Park is also an unmissable site for whale watching as the mammals gather to feed before winter.

After a port of call in the dynamic and cosmopolitan city of Montreal, your ship will continue its journey on the Saint Lawrence River, a prodigious waterway home to exceptionally beautiful nature.

To round off your cruise, you will sail along the shimmering waters of Lake Ontario before making your way to the cosmopolitan city of Toronto, where you will disembark.

Wild Earth Travel
Small Ships, Big Adventures

0800 945 3327 (within New Zealand) | +64 (0) 3 365 1355 | **1800 107 715** (within Australia)

info@wildearth-travel.com | **wildearth-travel.com**

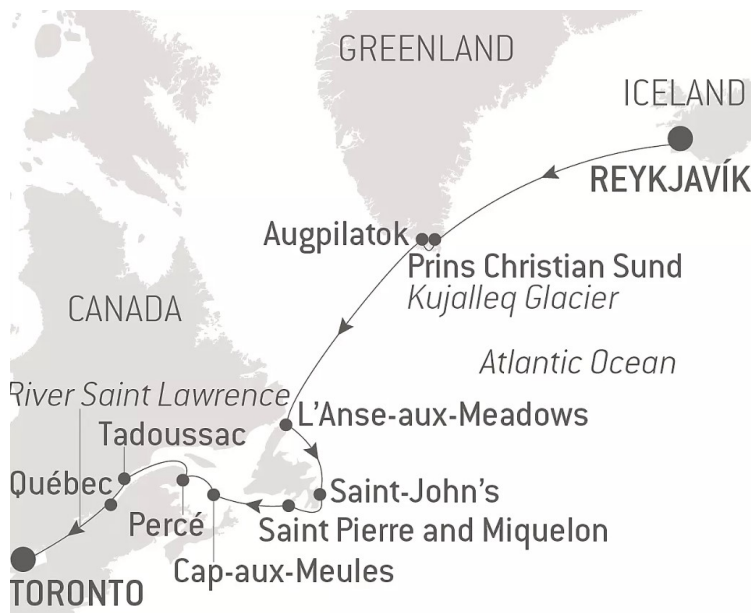


Wild Earth Travel

Small Ships, Big Adventures

wildearth-travel.com

info@wildearth-travel.com



disembark.

ITINERARY

Day 1 REYKJAVÍK

Iceland's capital stretches along the edge of a vast bay in the west of the country. Perlan, the "Pearl of Reykjavik", a museum located on 'Oskjuhlíð hill, offers a panoramic view of the lush, green landscapes. A little further, one can easily spot the signpost showing the way to the evangelical Hallgrímskirkja church, and to the historical centre where one can stroll along the Skólavörðustígur and the Laugavegur, two lively streets with charming small shops. For some relaxation just outside of the city, visitors have the opportunity to visit the Reykjanes peninsula and its famous thermal lagoons of the Blue Lagoon.

Day 2 AT SEA

During your day at sea, make the most of the many services and activities on

board. Treat yourself to a moment of relaxation in the spa or stay in shape in the fitness centre. Depending on the season, let yourself be tempted by the swimming pool or a spot of sunbathing. This day without a port of call will also be an opportunity to enjoy the conferences or shows proposed on board, to do some shopping in the boutique or to meet the PONANT photographers in their dedicated space. As for lovers of the open sea, they will be able to visit the ship's upper deck to admire the spectacle of the waves and perhaps be lucky enough to observe marine species. A truly enchanted interlude, combining comfort, rest and entertainment.

Day 3 PRINS CHRISTIAN SUND & KUJALLEQ GLACIER

Your ship glides silently towards the Greenland coast, in a setting punctuated by pointed peaks and majestic glaciers... You are on the verge of crossing the Prins Christian Sund, a narrow channel that stretches out and zigzags over some one hundred kilometres between Greenland's south-east and south-west. Fall under the spell of the primitive beauty of these unique landscapes, including rocky cliffs and waterfalls that are fed by the ice sheet and plunge into the icy waters. Here, bearded seals love to lie on the floating ice to soak up the sunshine. In the immense and mythical Greenland, in the Prince Christian Sound region, your ship will make its way to the Kujalleq Glacier. You will be captivated by this frozen tongue, in front of which dance small icebergs and a few growlers. Growler is the surprising name given to chunks of ice that are smaller fragments of an iceberg. They are either white or, more remarkably, blue-green. Birds fly in your wake and bearded seals observe you from afar, stretched out on granite rocks. Combined with the surrounding ice, these rocks form a magical landscape that immerses you in the polar realm.

Day 4 AAPPILATTOQ (AUGPILATOK)

Aappilattoq (Augpilatok), is a small Inuit village of around one hundred inhabitants, whose name means "sea anemone" in Greenlandic. Located in a mountainous region inaccessible by road, its picturesque, colourful houses stretch out to the southern tip of Greenland, on the banks of the spectacular Prince Christian Sound. Some one hundred kilometres long, the sound connects the Labrador Sea to the Iminger Sea, meandering through stunning landscapes such as majestic glaciers, craggy peaks, and rocky cliffs with waterfalls fed by the ice sheet. This region was uninhabited in the 19th century. The village was created in the 1920s and the main activities revolve around hunting, fishing and livestock farming.

Wild Earth Travel
Small Ships, Big Adventures

0800 945 3327 (within New Zealand) | +64 (0) 3 365 1355 | 1800 107 715 (within Australia)

info@wildearth-travel.com | wildearth-travel.com



Wild Earth Travel

Small Ships, Big Adventures

wildearth-travel.com

info@wildearth-travel.com

Days 5 - 6 AT SEA

During your day at sea, make the most of the many services and activities on board. Treat yourself to a moment of relaxation in the spa or stay in shape in the fitness centre. Depending on the season, let yourself be tempted by the swimming pool or a spot of sunbathing. This day without a port of call will also be an opportunity to enjoy the conferences or shows proposed on board, to do some shopping in the boutique or to meet the PONANT photographers in their dedicated space. As for lovers of the open sea, they will be able to visit the ship's upper deck to admire the spectacle of the waves and perhaps be lucky enough to observe marine species. A truly enchanted interlude, combining comfort, rest and entertainment.

Day 7 L'ANSE-AUX-MEADOWS, NEWFOUNDLAND

Located at the Northern extremity of the island of Newfoundland, L'Anse aux Meadows is listed as a UNESCO World Heritage Site and is the only site known to have been established by the Vikings in North America. Its ancient vestiges provide the very first traces of European presence in the new world. The remains found on this splendid 11th century Scandinavian archaeological site are identical to those found in Iceland. Aboard your ship, cruise in the wake of those first Vikings who discovered the tip of North America 500 years before Christopher Columbus arrived on the shores of the American continent. A memorable adventure in a setting punctuated with coastal peat bogs, grass and many varieties of shrubs and lichen.

Day 8 SAINT-JOHN'S, NEWFOUNDLAND

You will be charmed by the small multi-coloured wooden houses hanging to the side of cliffs at the entrance to the bay or edging the small steep streets of the capital of the Canadian province of Newfoundland and Labrador. Their green, blue, red and yellow colours are reminiscent of fishing boats. This quiet little port at the end of the world, the easternmost in North America, became the first English colony founded on American territory in 1497. Protected by the Gulf Stream, the climate here is relatively mild and the natural landscapes are spectacular. You'll be able to enjoy magnificent panoramas from Signal Hill. It was at the summit of this hill that Guglielmo Marconi received the first transatlantic wireless signal in 1901.

Day 9 SAINT PIERRE ISLAND, SAINT PIERRE AND MIQUELON

Off the Canadian coast, discover Saint Pierre Island, one of the two main islands of the Saint Pierre and Miquelon archipelago, the only French territory in North America. Endowed with a natural harbour, the island, whose name is a reference to the patron saint of fishermen, developed around the fishing industry and still has many traces of its past today. Whale hunting, cod fishing, alcohol smuggling during the Prohibition: all of these memories are still very much alive in the capital, Saint-Pierre. The island is also renowned for the observation of exceptional fauna including, among others, whales, fin whales, dolphins, seals, puffins and petrels.

Day 10 MIQUELON ISLAND, SAINT PIERRE AND MIQUELON

At the entrance of the Gulf of Saint Lawrence, not far from the Grand Banks of Newfoundland, Miquelon is one of the two main islands of the Saint Pierre and Miquelon archipelago and will delight those with a love of wide open space. Made up of three peninsulas connected by long sand spits, this wild land, famous for being home to France's only boreal forest, has sublime scenery of hills, dotted with ponds, woods and bogs, and ringed by lagoons and steep cliffs. The rich and varied wildlife is the promise of fine encounters, whether inland, populated with white-tailed deer, snowy owls and bald eagles, or on the coast, home to many sea birds and grey seals.

Day 11 CAP-AUX-MEULES, MAGDALEN ISLANDS

Although it is the administrative and economic centre of the Magdalen Islands archipelago, in the Gulf of Saint Lawrence, the village of Cap-aux-Meules remains a peaceful location and is ideal for exploring preserved nature. Located on the eponymous island, in reference to the sandstone rocks of the cape that were used in the past to make grindstones, the location is above all considered to be the maritime gateway to the archipelago. In this respect, it offers privileged access to many sites renowned for their natural and historic heritage, such as the village of Havre-Aubert which is a member of the Most Beautiful Villages of Quebec.

Day 12 PERCÉ

If you appreciate the beauty of scenery and geological phenomena, you will fall under the irresistible spell of Percé, one of the most beautiful villages in

Wild Earth Travel
Small Ships, Big Adventures

0800 945 3327 (within New Zealand) | +64 (0) 3 365 1355 | **1800 107 715** (within Australia)

info@wildearth-travel.com | wildearth-travel.com



Wild Earth Travel

Small Ships, Big Adventures

wildearth-travel.com

info@wildearth-travel.com

Quebec. Apart from the attractions of the town itself, Perce owes its reputation to its proximity to the famous rock of the same name that rises opposite it in the Gulf of Saint Lawrence. Along with the neighbouring Bonaventure Island, this rocky outcrop forms a national park famed for its natural, historical and geological heritage. With a choice of hiking, underwater exploration and cultural activities, you'll never be short of things to do in this fascinating region.

Day 13 TADOUSSAC

The Quebec village of Tadoussac stands at the confluence of the Saguenay River and the Gulf of Saint-Lawrence, in south-east Canada. The village is bright with multicoloured houses nestling in an emerald-green pine forest. From the waterfront, it's easy to spy out Tadoussac Chapel, thanks to its bright red roof. Not far from this church built of wood, one of the oldest in North America, stands a century-old village holiday resort, Hotel Tadoussac. Treat yourself to tea on the terrace overlooking the shoreline. In addition, at the marine mammal interpretation centre, you can hone your knowledge of the cetaceans that regularly frequent Tadoussac bay.

Day 14 QUÉBEC

The capital of "La Belle Province" sits at the confluence of the St Charles River and the Gulf of St Lawrence in south-east Canada. Founded in the 17th century, the city still has an encircling wall, a historic civil engineering work and the only one of its kind remaining in North America. You will love the postcard-perfect stone houses of Old Quebec, the historic district listed as a UNESCO World Heritage site. Shopping is a pleasure in pedestrian streets such as Petit-Champlain Street, or you can relax over a spruce beer, seasoned with pine buds. Dufferin Boardwalk, an esplanade near the emblematic Chateau Frontenac, is the perfect place for views of the river and old city.

Day 15 SAILING RIVER SAINT LAWRENCE AND GOING THROUGH ITS LOCKS

Linking the Atlantic Ocean to the Great Lakes region inland, the Saint Lawrence Seaway was inaugurated in 1959, more than 250 years after the initial construction aiming to avoid the rapids obstructing navigation in these parts. This large engineering project, which required four years of huge work, offers a unique sailing experience, punctuated by the passage of the different

locks marking out this corridor, which is almost 4,000 km long.

Day 16 TORONTO

The largest city in Canada and capital of the province of Ontario, Toronto fascinates as much by its incredible diversity as by its size. Make sure you visit the CN Tower, the tallest tower in the western hemisphere, as well as the St. Lawrence Market whose stalls reflect the multicultural wealth of this city known as the global city. Not far from there, the historic Distillery District unveils its brick-paved streets imbued with romantic charm and its myriad of small restaurants, cafes, boutiques, theatres and art galleries. The Royal Ontario Museum and its impressive collections devoted to the world's natural and cultural history will also be an unmissable stop during this port of call.

Please Note:

Itineraries are subject to change.

Wild Earth Travel
Small Ships, Big Adventures

0800 945 3327 (within New Zealand) | +64 (0) 3 365 1355 | **1800 107 715** (within Australia)

info@wildearth-travel.com | **wildearth-travel.com**



Wild Earth Travel

Small Ships, Big Adventures

wildearth-travel.com

info@wildearth-travel.com

YOUR SHIP: LE BELLOT

YOUR SHIP:	Le Bellot
VESSEL TYPE:	Luxury Expedition / Cruise Ship
LENGTH:	131 metres
PASSENGER CAPACITY:	184
BUILT/REFURBISHED:	2019-2020

Featuring innovative and environmentally-friendly equipment, elegantly designed staterooms, spacious suites with large windows, and lounge areas that open onto the outside, this new limited-capacity yacht boasting just 92 staterooms and suites will offer you a truly unique cruising experience.

As the first ship in a new series that remains true to the Ponant spirit, Le Bellot will embody the unique atmosphere that is the cruise line's hallmark: a subtle blend of refinement, intimacy and comfort.

Aboard this ship that flies the French flag, you will experience the incomparable pleasure of an intimate cruise, with the possibility of exploring an ever-increasing range of destinations in an ethnic-chic ambiance with luxury service.

Experience a luxurious setting where the accent is on authenticity and passion for travel.

RESTAURANTS

As it is an essential part of French culture, gastronomy will naturally have pride of place aboard this new ship.

To the back of Deck 4, you will find a 260 m² panoramic restaurant which can accommodate all of our passengers in a single sitting. Designed differently to that on our other ships, this

dining area, which opens onto the outside, will have a buffet of salads, desserts and cheeses at your disposal. Our discreet and attentive crew will provide table service for hot meals.

In a relaxed atmosphere, an outdoor grill on Deck 3 will serve grilled meats with a variety of salads and desserts.

PUBLIC AREAS

Le Bellot has many common areas that are designed and equipped to meet all of your needs while preserving the intimacy of each passenger.

A 140 m² reception area includes:

A reception/concierge desk,

An excursions desk,

The ship's administrative services,

The sales office, manned by our Guest Relations Officer,

Our 50 m² boutique which sells clothing, jewellery, beauty products, postcards and various accessories,

Toilets accessible to passengers with reduced mobility.

A new hydraulic platform with adjustable height provides:

Easier boarding than on any other cruise ship,

Easier Zodiac embarkation and disembarkation for expeditions,

Easier access to the sea for swimming and practising various water sports such as kayaking or paddle-boarding.

A pool deck offering:

A pool with a panoramic view, equipped with a counter-current swimming system,

A pleasant solarium,

An outdoor bar and lounge with armchairs and sofas.

A 200 m² main lounge which can accommodate all of our passengers to share convivial moments and to host activities

Wild Earth Travel
Small Ships, Big Adventures

0800 945 3327 (within New Zealand) | +64 (0) 3 365 1355 | **1800 107 715** (within Australia)

info@wildearth-travel.com | wildearth-travel.com



organised during the day or evening.

Lastly, a theatre that seats 188, equipped with:

The latest sound and lighting technology,

A LED wall as the stage backdrop, for the projection of high-resolution images and videos.



and videos.



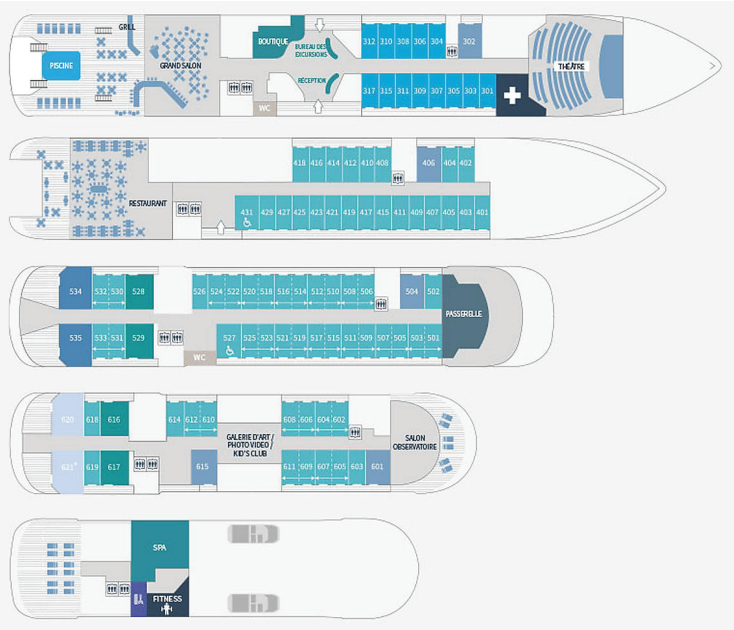
Wild Earth Travel

Small Ships, Big Adventures

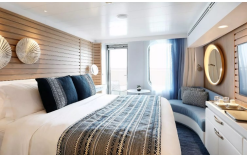


wildearth-travel.com
info@wildearth-travel.com

INSIDE YOUR SHIP



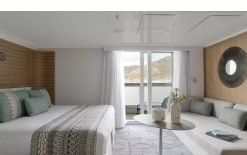
Deluxe Stateroom



Deluxe Suite Deck 4



Deluxe Suite Deck 6



Grand Deluxe Suite Deck 6



Deluxe Suite



Deluxe Suite Deck 5



Grand Deluxe Suite



Owner's Suite





Wild Earth Travel

Small Ships, Big Adventures

wildearth-travel.com

info@wildearth-travel.com

PRICING

05-Aug-2025 to 20-Aug-2025

Deluxe Stateroom	16750 AUD pp
Prestige Stateroom Deck 4	18600 AUD pp
Prestige Stateroom Deck 5	19520 AUD pp
Prestige Stateroom Deck 6	20620 AUD pp
Deluxe Suite Deck 4	28760 AUD pp
Deluxe Suite Deck 5	28760 AUD pp
Deluxe Suite Deck 6	28760 AUD pp
Deluxe Suite	28760 AUD pp
Prestige Suite Deck 5	38940 AUD pp
Prestige Suite Deck 6	40980 AUD pp
Privilege Suite Deck 6	43020 AUD pp
Privilege Suite	43020 AUD pp
Grand Deluxe Suite	47280 AUD pp
Grand Deluxe Suite Deck 6	47280 AUD pp
Owner's Suite	58260 AUD pp

27-Jul-2026 to 11-Aug-2026

Deluxe Stateroom	19140 AUD pp
Prestige Stateroom Deck 4	21240 AUD pp
Prestige Stateroom Deck 5	22300 AUD pp
Prestige Stateroom Deck 6	23560 AUD pp
Deluxe Suite Deck 5	32810 AUD pp
Deluxe Suite	32810 AUD pp
Deluxe Suite Deck 4	32810 AUD pp
Deluxe Suite Deck 6	32810 AUD pp
Prestige Suite Deck 5	44380 AUD pp
Prestige Suite Deck 6	46690 AUD pp
Privilege Suite Deck 6	49010 AUD pp
Privilege Suite	49010 AUD pp
Grand Deluxe Suite Deck 6	53850 AUD pp
Grand Deluxe Suite	53850 AUD pp
Owner's Suite	73970 AUD pp

ADDITIONAL CHARGES:

Port Taxes & Fees 1110 AUD pp

Wild Earth Travel
Small Ships, Big Adventures

0800 945 3327 (within New Zealand) | +64 (0) 3 365 1355 | **1800 107 715** (within Australia)

info@wildearth-travel.com | wildearth-travel.com



Wild Earth Travel
Small Ships, Big Adventures

wildearth-travel.com

info@wildearth-travel.com

SPECIAL OFFERS

Online prices reflect the current brochure fare savings of up to 30%. Prices may change based on demand. Terms and conditions apply. This special offer is subject to availability. Please contact us for more details.