

Wild Earth Travel

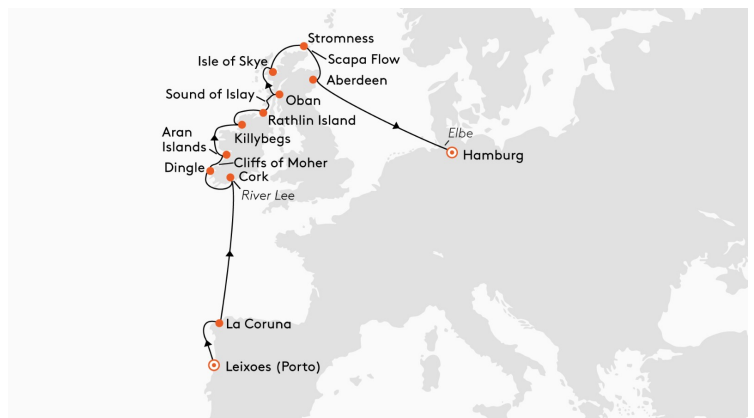
Small Ships, Big Adventures

wildearth-travel.com

info@wildearth-travel.com

EXPEDITION CIRCUMNAVIGATION OF IRELAND AND WILD SCOTLAND

This cruise is all about contrasts. Rough cliffs and lush green landscapes, picturesque coastal towns and mighty castles. Unforgettable history coupled with fascinating mythology. At the best time of year for bird watching, this cruise will inspire you - both ornithologically and culturally.



ITINERARY

Fri, 28.05.2027 Leixoes (Porto)/Portugal

Departure 19.00 hrs

Sat, 29.05.2027 La Coruna/Spain

14.00 - 20.30 hrs

The treasures of Galicia await when your ship arrives in La Coruna, Spain. The Torre de Hercules, the city's impressive landmark, tells of great history from afar - it is the only still active lighthouse from Roman times. Discover the city's architectural history as you stroll through the lively old town and trace the transition from Roman to baroque times. San Carlos Garden is an oasis of calm right in the city centre, or you can enjoy the dramatic Atlantic coastline on an invigorating walk along the promenade. La Coruna is also a popular starting point for excursions* to the pilgrimage site Santiago de Compostela, whose magnificent cathedral combines Romanesque, Renaissance and baroque styles.

Wild Earth Travel

Small Ships, Big Adventures

0800 945 3327 (within New Zealand) | +64 (0) 3 365 1355 | **1800 107 715** (within Australia)

info@wildearth-travel.com | **wildearth-travel.com**

Wild Earth Travel

Small Ships, Big Adventures



wildearth-travel.com

info@wildearth-travel.com

Sun, 30.05.2027 Relaxation at sea

Mon, 31.05.2027 Cruising on the River Lee

Cork/Ireland, 13.00 - 19.00 hrs

The Irish themselves, at least those outside of Dublin, speak of Cork as the actual capital of Ireland. You will surely agree with them when you discover the charming lanes with their Victorian houses, cosy cafes and pubs. A popular meeting place for locals is the covered English Market, dating from 1788, where local specialties are sold - indulgence and history are served up in equal measure here. Your experts will be happy to help you with the history: the "Rebel City" was the heart of the Irish struggle for independence. The spirit of freedom that Cork reflects is exemplary for your cruise - off the beaten track, you will find new impressions. In addition to your city tours, we also recommend a detour into the breathtaking landscape with rugged cliffs and picturesque bays, ideal for wonderful hikes. Get ready to discover the true Irish soul.

Tue, 01.06.2027 Dingle

07.00 - 18.00 hrs

Splendid impressions and exciting activities lie ahead of you as your expedition ship makes its way along the coast of Ireland towards Dingle. The peninsula, with its wild cliffs, juts out into the Atlantic, leaving you amazed at the eroding power of the sea. A rugged coastline and fine sandy coves shape Dingle, the pearl of County Kerry. "Failte!" - you'll often hear the welcoming greeting from the hospitable locals. Irish, also known as Gaelic, has been spoken on the peninsula since the fourth century. And the landscape on Dingle will leave you speechless - an ideal terrain for enjoying magnificent views while hiking with your experts on the Irish pilgrim route. The rugged nature, bathed in green, is truly inspirational.

Wed, 02.06.2027 Cruising off the Cliffs of Moher

Aran Islands, 09.00 - 17.00 hrs

You will experience the works of art that erosion is capable of as you cruise off

the Cliffs of Moher. The power of the crashing waves has eroded hollows into the rock, with parts of the cliff crashing down to form a unique and spectacular coastline. In some places, the rocks drop more than 200 m (656 ft) almost vertically into the sea. As you pass by this natural wonder, you will be able to enjoy some amazing views from the deck.

You will feel a true sense of discovery on the Aran Islands. The limestone islands off the west coast of Ireland rise up with grey and blue cliffs up to 100 m (328 ft) from the raging sea. If you are on a discovery tour, you will enjoy the view over the rocky coast and puzzle over the islands' past. Answers will be provided by your experts, but also by your own impressions when visiting Kilronan: in what is perhaps one of Ireland's most picturesque locations, lined by a white sandy beach, you can immerse yourself in island life. During your individual shore visit, explore the impressive Fort Dun Aonghasa, which sits high up on a cliff above the Atlantic. The well-preserved stone fortress from the Bronze Age offers breathtaking views of the sea and the surrounding nature. At first glance, the islands may look like a rocky desert, but they turn out to be a nutrient-rich limestone landscape with rare flora and fauna.

Thu, 03.06.2027 Killybegs

07.00 - 18.00 hrs

Killybegs is an insider tip off the classic Irish routes. The largest fishing port in Ireland is located in the tranquil town on the Atlantic coast, where numerous ships land their fresh catch daily. A very special "commodity" has its origin ashore: the Donegal rugs, which are produced in traditional carpet weaving mills, are characterised by their handicraft and elaborate patterns - the world's largest loom is also said to be here. Killybegs is also the gateway to nature's works of art: green meadows, idyllic dunes and azure-blue waters. Fintra Beach on the outskirts of the town is one of the most beautiful beaches in County Donegal.

Fri, 04.06.2027 Rathlin Island/Northern Ireland/Great Britain

Cruising through the Sound of Islay

A wonderful place for bird watching lies ahead of you when your expedition ship calls Rathlin Island in Northern Ireland with cliffs up to 70 m (229 ft) high that alternate with beautiful bays. Compared with the island's nearly 150 human inhabitants, the many kittiwakes and puffins that you can watch are clearly in the majority. Look forward to special encounters with nature and to

Wild Earth Travel

Small Ships, Big Adventures

0800 945 3327 (within New Zealand) | +64 (0) 3 365 1355 | **1800 107 715** (within Australia)

info@wildearth-travel.com | **wildearth-travel.com**

Wild Earth Travel

Small Ships, Big Adventures



wildearth-travel.com

info@wildearth-travel.com

the ornithological expertise of your on-board experts. Amidst the rugged landscape, the excursions to the burial mounds, cashels and menhirs that have been built here are surrounded by a magical aura. Follow in the footsteps of the island's history and explore the remains of the old castles and churches that dot Rathlin Island. A highlight is a visit to the West Light, one of the three lighthouses that now houses a maritime museum. From here you have spectacular views of the rugged cliffs and the sea.

Sat, 05.06.2027 Oban/Scotland

07.00 - 18.00 hrs

You'll come upon the mystical expanses of the Scottish mainland on the wild west coast. Oban, idyllically built around a picturesque natural harbour, is considered the gateway to the Inner and Outer Hebrides. Your exploration of the coastal town is crowned by McCaig's Tower, a decorative replica of Rome's Colosseum. The tranquil gardens within offer a refuge from the hustle and bustle of urban life. The surrounding area, with its peaceful and beautiful Highlands, is ideal for hiking in the dramatic landscape of mountains and sea. Oban embodies the raw, unspoilt beauty of Scotland, combining it with the finesse of the single malt whisky distilled here - complex and multifaceted, just like the town itself.

Sun, 06.06.2027 Portree/Isle of Skye

07.00 - 17.00 hrs

Lush, green highlands, rugged coasts and the heritage of kings and clans: head deep into the rugged island world of the Hebrides and feel the soul of Scotland - for example, on the wildly romantic Isle of Skye. Here you will be greeted by the famous rock formation, the Old Man of Storr, watching over the island. Portree is more tranquil: in this picturesque fishing village, you will encounter colourful facades which stand out in contrast against the black cliffs and green highlands. From here you can explore the surrounding area with its lochs, mountains and castles, which are wonderful examples of Scottish architecture.

Mon, 07.06.2027 Stromness/Orkney Islands

Cruising through Scapa Flow

Discover charming Stromness, the "grey town by the sea", which owes its name to its characteristic scenic houses. In the listed centre, inviting piers, imposing warehouses and trading houses combine history and maritime flair perfectly. An absolute highlight is the impressive former Viking settlement, which allows you to immerse yourself in the fascinating history of this region. But the Orkneys also mean wind, water and walking: enjoy spectacular views on nature trails. The experts at your side will take you on a journey of discovery to important testimonies of the past - from a Neolithic stone circle to a Stone Age village and a 17th-century manor house.

Cruising through Scapa Flow, a large harbour bay in the south of the Scottish Orkney Islands, combines the North Sea world with history. Around you is nothing but a wide expanse of water lined with gentle coastal strips. And below you are the remains of the dramatic scuttling of the German High Seas Fleet in 1919: during the negotiations for the Treaty of Versailles, the German Rear Admiral Ludwig von Reuter feared that the ships could fall into the hands of the Allies. To prevent this, he ordered the sinking of his own entire fleet in order to preserve the honour of the German Navy. Today, Scapa Flow is a popular diving destination known for its wrecks.

Tue, 08.06.2027 Aberdeen

07.00 - 17.00 hrs

Welcome to Aberdeen, the "city of flowers and granite" in north-east of Scotland. Where the pretty rivers Dee and Don meet, old traditions meet modern influences. The sparkling granite architecture gives the harbour city an elegant atmosphere and makes it a real highlight. Discover the impressive tropical winter gardens in Duthie Park and stroll through the charming medieval city centre. With renowned universities and a rich cultural scene, the streets are full of life. Just a stone's throw from the city centre, one of the best beaches in Scotland - Aberdeen Beach - invites you for a leisurely stroll. You might spot dolphins here or in Aberdeen harbour, for which the city is also famous.

Wed, 09.06.2027 Relaxation at sea

Thu, 10.06.2027 Hamburg

Wild Earth Travel

Small Ships, Big Adventures

0800 945 3327 (within New Zealand) | +64 (0) 3 365 1355 | **1800 107 715** (within Australia)

info@wildearth-travel.com | **wildearth-travel.com**



Wild Earth Travel

Small Ships, Big Adventures



wildearth-travel.com

info@wildearth-travel.com

Arrival 07.00 hrs

Individual travel arrangements from cruise arrival point

Please Note:

Itineraries are subject to change.



Wild Earth Travel
Small Ships, Big Adventures

0800 945 3327 (within New Zealand) | +64 (0) 3 365 1355 | **1800 107 715** (within Australia)

info@wildearth-travel.com | **wildearth-travel.com**

Wild Earth Travel

Small Ships, Big Adventures

wildearth-travel.com

info@wildearth-travel.com

YOUR SHIP: HANSEATIC INSPIRATION/NATURE/SPIRIT

YOUR SHIP:	Hanseatic
VESSEL TYPE:	Inspiration/Nature/Spirit
LENGTH:	138 m
PASSENGER CAPACITY:	230
BUILT/REFURBISHED:	2021

The HANSEATIC inspiration, a small, state-of-the-art expedition ship with a maximum of 230 guests, offers a perfect blend of adventure and comfort for explorers seeking to uncover the world's wonders. As an international vessel conducting cruises in both English and German, it brings over 30 years of expertise from a market leader in German-speaking countries to every journey. Each expedition is a masterpiece, passionately crafted to reveal far-flung worlds--be it icy realms, tropical paradises, wildlife havens, or cultural gems--making every voyage a unique discovery aboard this exceptional ship.

Features of all cabins and suites

An ocean view with even more: exclusively outside cabins and suites, almost all with balconies or French balconies

Spaciously designed - enjoy a relaxing stay in rooms from 21 m²/226 ft² up to 71 m²/764 ft² in size

Exceptionally equipped - for example, with binoculars, Nordic Walking poles, air conditioning, coffee machine and mini bar (free of charge) and 24-hour cabin service

Separable beds

Rain shower and heated wall in bathroom (e.g. for towels and

wet parkas)

Extensive infotainment with live broadcast and recordings of expert presentations, forwardview camera, navigation chart, films and much more

Restaurants

Aboard the HANSEATIC inspiration, a new kind of freedom blends adventure and pleasure with a culinary journey across three exceptional restaurants. The spacious HANSEATIC Restaurant offers flexible mealtimes and a free choice of seating, serving a daily-changing menu of global flavors inspired by local specialties, paired with fine wines and supported by attentive 24-hour cabin service. At the Lido Restaurant, guests can savor breakfast under the open sky or enjoy a perfectly grilled steak from the outdoor barbecue, complete with panoramic views and an open show kitchen. The specialty restaurant Nikkei fuses fine Japanese creations with modern Peruvian cuisine, delivering a unique dining experience that elevates exploration to new heights--all while bars in the Observation Lounge and HanseAtrium offer favorite drinks against stunning backdrops, from Nordic fjords to icy Antarctic vistas.

Fitness and Wellness

On the HANSEATIC inspiration, an extraordinary time out awaits after thrilling Zodiac rides, challenging hikes, or Arctic adventures. Unwind in the Ocean Spa, where a Finnish sauna with stunning ocean views, a gentle steam sauna, an ice fountain, and a relaxation room rejuvenate your senses, complemented by professional massages, cosmetic treatments, and eco-friendly products made from natural, vegan ingredients.

Wild Earth Travel

Small Ships, Big Adventures

0800 945 3327 (within New Zealand) | +64 (0) 3 365 1355 | **1800 107 715** (within Australia)

info@wildearth-travel.com | **wildearth-travel.com**

Wild Earth Travel

Small Ships, Big Adventures



wildearth-travel.com

info@wildearth-travel.com

Stay active in the 100 m² fitness room or separate course room--both with ocean vistas--guided by a fitness coach offering personalized advice and a variety of courses, either indoors or on deck. The pool area, with its flexible canopy, invites relaxation year-round, featuring water loungers, a whirlpool, and a bar, ensuring a perfect blend of indulgence and revitalization against the backdrop of the open sea.

Knowledge

Shore excursions and Zodiac rides come alive with deeper context through fascinating presentations in the HanseAtrium, a high-tech lounge where experts share daily precaps and recaps, doubling as an atmospheric evening bar for films and discussions. The Ocean Academy enhances the journey with a Study Wall and interactive poster of scientific insights, microscopes for exploring hidden wonders alongside experts, and Study Seats--with swivel touchscreens--for personal dives into science. Supported by travel diaries and destination videos, this immersive experience broadens horizons with cutting-edge tools and expertise.



expertise.

Wild Earth Travel

Small Ships, Big Adventures

0800 945 3327 (within New Zealand) | +64 (0) 3 365 1355 | **1800 107 715** (within Australia)

info@wildearth-travel.com | **wildearth-travel.com**

Wild Earth Travel

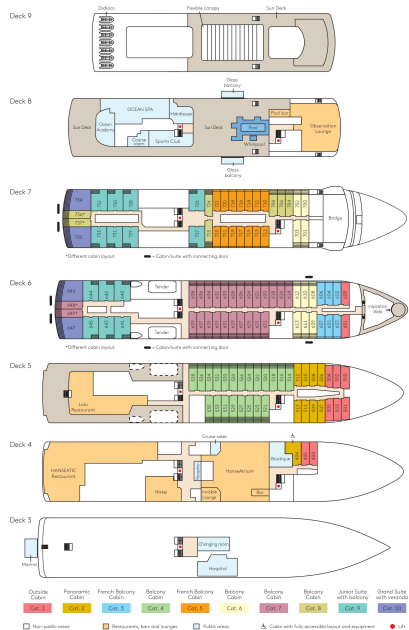
Small Ships, Big Adventures

wildearth-travel.com

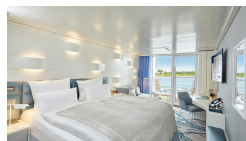
info@wildearth-travel.com

INSIDE YOUR SHIP

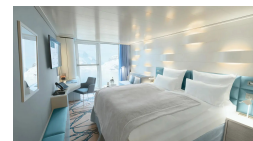
Deck plan HANSEATIC inspiration



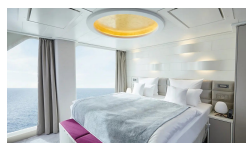
Balcony Cabin



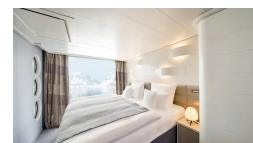
French Balcony Cabin



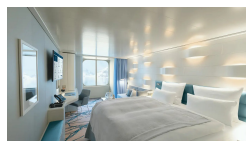
Grand Suite



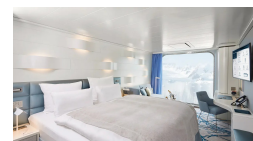
Junior Suite



Outside Cabin



Panoramic Cabin



Wild Earth Travel
Small Ships, Big Adventures

0800 945 3327 (within New Zealand) | +64 (0) 3 365 1355 | 1800 107 715 (within Australia)

info@wildearth-travel.com | wildearth-travel.com



Wild Earth Travel

Small Ships, Big Adventures



wildearth-travel.com

info@wildearth-travel.com

PRICING

28-May-2027 to 10-Jun-2027

Outside Cabin	6690 EUR pp
Panoramic Cabin	6690 EUR pp
French Balcony Cabin	8420 EUR pp
Balcony Cabin	9120 EUR pp
Junior Suite	12670 EUR pp
Grand Suite	17240 EUR pp

Wild Earth Travel

Small Ships, Big Adventures

0800 945 3327 (within New Zealand) | +64 (0) 3 365 1355 | **1800 107 715** (within Australia)

info@wildearth-travel.com | **wildearth-travel.com**