



EXPEDITION CIRCUMNAVIGATION OF ICELAND AND SOUTH-WEST GREENLAND

This cruise aboard the HANSEATIC inspiration unveils a pioneering route from Iceland's rugged volcanic shores to Greenland's icy south-west coast, blending untamed natural splendor with unique wildlife encounters. Highlights include exploring volcanic landscapes and glaciers, spotting puffins, northern fulmars, and polar gulls in an ornithologist's paradise, and embarking on expert-led hikes past waterfalls and Arctic tundra. Whale enthusiasts will revel in sightings of minke whales, porpoises, humpbacks, and sperm whales, while Zodiac rides in Disko Bay showcase Greenland's shimmering ice sculptures--offering a front-row seat to nature's grandeur across Iceland's north and east coasts and Greenland's stunning fjords and bays.



ITINERARY

Wed, 23.06.2027 Reykjavik/Iceland

Departure 19.00 hrs

Thu, 24.06.2027 Heimaey/Westman Islands

Mysticism and adventure characterise the Westman Islands off the south coast of Iceland. Heimaey is not only the largest and only inhabited island in the archipelago, but also the one with the most known volcanic eruptions. In 1973, the Eldfell volcano erupted and buried most of the village under itself. Thanks to a quick evacuation, mostly by fishing boats, all residents could be brought to safety in time. The lava landscape and the Eldheimar Museum bear impressive witness to the event. Your on-board expedition team offers hikes of various lengths. Take the opportunity, for example, to climb Eldfell or marvel at the lava formations on the cliffs.

Tip for ornithologists: The harbour entrance offers good opportunities for sightings of common murres, kittiwakes and northern fulmars. Meadow pipits and grey wagtails can usually be observed on the meadows outside the village. Those who make it to the southern cape will be rewarded with the first



Wild Earth Travel

Small Ships, Big Adventures

wildearth-travel.com

info@wildearth-travel.com

puffins.

Fri, 25.06.2027 Relaxation at sea

Sat, 26.06.2027 East coast of Iceland (Seydisfjörður)

Fjords, fishing villages and a sense of freedom: the east coast of Iceland is characterised by impressive mountain ranges, large forests, fertile valleys and deep-blue inlets. A world of discovery, also geologically, as your experts on board will tell you. The region is known for its magma chambers with colourful minerals and its bizarre rhyolite formations.

The fishing village of Seydisfjörður lies in an idyllic setting at the end of a fjord of the same name, surrounded by mountains that reach heights of up to 1,000 m (3,281 ft) and are almost always capped with snow. In the town centre, there are many historic wooden buildings in the style of the 1920s that bear witness to the wealth of the herring boom. Small art galleries, cafes and shops invite you to stay and explore during your individual shore visit. You can explore the surrounding area with its waterfalls on your own on numerous trails directly from the boat.

Tip for ornithologists: In the Skalanes nature reserve, Arctic terns, redshanks, black-tailed godwits and redwits can be easily observed. Great black-backed gulls like to perch on the coast, and snipes are usually mating in the air at this time of year. The larger streams that flow into the bay should be searched for the beautiful ruffed duck, which only breeds in Iceland in Europe.

Sun, 27.06.2027 - Tue, 29.06.2027 North coast of Iceland

(Husavík, Grimsey, Akureyri, Djúpavík)

The fjords and the sea create a natural canvas that is at once remote and soul-stirring on the north coast of Iceland. Here you are close to the Arctic Circle, and a passionate spirit of discovery surrounds the ship. Off the beaten track, the route takes you to the most beautiful destinations on the peninsula and the islands.

The oldest settlement in Iceland is the fishing village of Husavík, known as one of the best places in Europe for whale watching. You may even spot the sea giants from on board. You will also be mesmerised by nature on land when you hike up the local mountain Husavíkurfjall and to Lake Botnsvatn with your

experts. Husavík is also the starting point for tours* in the surrounding area - for example, to the Dettifoss waterfall, which falls from a height of 45 m (148 ft) and the Asbyrgi Canyon - according to legend, a giant horse of Odin (the father of the gods) created this massive rock basin.

The expedition route takes you on to a magical destination: the northern Arctic Circle on Grimsey, 40 km (25 mi.) north of Iceland. This makes the island the only inhabited place in Iceland where the midnight sun can be seen. Millions of birds breed on the cliffs and beaches and find plenty of food in the waters that are full of fish. Enjoy the sights on hikes with your experts to the polar circle monument, the bird cliffs and the lighthouse.

A true pearl of the north, Akureyri sits on a long fjord. Take your time to explore the charming town centre with its wooden houses from the late 19th century and stroll through the lively alleys. A visit to the botanical garden is also worthwhile: the unique plant collection includes almost all native and several hundred foreign plant species. The home of author Jón Sveinsson is also your gateway to the majestic nature in the surrounding area, which is best explored on an excursion.

The people of Djúpavík used to come and go with the shoals of herring. The story begins in 1917, when a herring salting plant was founded here. The plant soon became the largest employer in the region, so that a modern herring factory was built in the 1930s, the largest of its kind in Europe at the time. After just 20 years, the catch quotas were so low that production had to be discontinued. A tour of the abandoned buildings with disused machines and huge tanks is like travelling back in time. Explore this ghost town independently. Alternatively, hike with your experts along the shore of the fjord and up the surrounding mountains.

Tip for ornithologists: Many bird species can be seen on the north coast of Iceland: common species include eider ducks and Arctic terns. On the water, puffins are usually joined by razorbills and common murrelets. With a bit of luck, you may spot a short-eared owl, a merlin or even a goshawk. The graceful red-necked phalarope can usually be observed at close range here, and the meadows are home to golden plovers.

Wed, 30.06.2027 Relaxation at sea

Thu, 01.07.2027 - Sat, 03.07.2027 South coast of Greenland

(Skjoldungen Sound, cruising through Prince Christian Sound [depending on ice], Arsukfjörður)

Wild Earth Travel
Small Ships, Big Adventures

0800 945 3327 (within New Zealand) | +64 (0) 3 365 1355 | **1800 107 715** (within Australia)

info@wildearth-travel.com | wildearth-travel.com



Wild Earth Travel

Small Ships, Big Adventures

wildearth-travel.com

info@wildearth-travel.com

Natural wonders lie ahead in the south coast of Greenland. The crew - experienced in polar voyages - react flexibly, always with the aim to offer you the greatest possible experience.

In Skjoldungen Sound, they take you deep into a fantastic fjord landscape. On both sides of the ship, the mountains rise up steeply several hundred metres into the air. Glaciers and waterfalls line the route. The Zodiacs are put to water for a landing in Dronning Marie Dal. Dramatic mountains, wild and untouched nature - experience Greenland's rugged beauty in its purest form on a hike. Always accompanying you will be your experts, who will tell you all about the vegetation, animal kingdom and geology.

The ice-dependent passage through Prince Christian Sound - one of the most beautiful passages in Greenland, 64 km (40 mi.) long and in some places barely 500 m (1,640 ft) wide - offers an intoxicating monumental view of nature. Waterfalls and glaciers that reach into the turquoise-coloured water as well as colourful fishing huts will pass by you. A cry of "Whale up ahead!" could sound from the bridge at any time, and the many open deck areas provide the best opportunities for sightings.

Arsukfjord is also a gem. In Greenlandic, "Arsuk" means "beloved place" - and you will soon see why on a hike along the fjord. Together with your experts, you will hopefully be able to see musk oxen in the expansive tundra. In the abandoned town of Ivigtut, in contrast, you will gain an insight into the era of mining - perhaps you will find yourself some cryolite and siderite souvenirs, which were mined here.

Tip for ornithologists: In July, Greenland is an ideal place for birdwatching, as many Arctic bird species breed during this time and the region is teeming with migratory birds. Among the most common species you can see in Greenland are the kittiwake, northern fulmar and common murre.

Sun, 04.07.2027 - Wed, 07.07.2027 West coast of Greenland

(Nuuk, Evighedsfjord, Ilulissat, Disko Bay, Sisimiut)

In the magical Arctic light, the wonders of the west coast of Greenland will be illuminated north of the Arctic Circle. A vast and silent landscape, home to relics of a 4,500-year-old culture - seemingly almost forgotten by the world.

Nuuk, Greenland's capital, is the heart of the nation. Here, history is reflected

in the colonial harbour and modernity in its centre. Stroll through the pedestrian zone with its many shops selling arts and crafts. The National Museum exhibits mummies that are about 500 years old and boats made of sealskin. Or you can visit the Art Museum with a collection of around 300 paintings and graphic works as well as 400 soapstone figures.

Almost 100 km (62 mi.) long, Evighedsfjord is like an open-air stage with steep cliff walls rising up around it. Your day will be dedicated to the magnificent natural surroundings: the Zodiacs will take you along the blue-and-white glacier and land on a small beach. A sporty hike takes you very close to the glacier and to beautiful viewpoints with panoramic views over the fjord.

An eternal scene can be found in Ilulissat when the glacier calves in the world-famous ice fjord. On a hike with your experts, enjoy the glittering, shimmering ice masses, which appear in many different towering formations. An incredible UNESCO World Heritage Site.

Disko Bay will provide even more memorable moments: ice sculptures in all manner of forms drift slowly through the vast area. Enjoy this natural spectacle from your front-row seat on deck - or take a Zodiac ride to the centre of the action. Illuminated by the sunlight, the ice gleams in a fascinating play of colours from white to azure blue.

In Sisimiut, where the remarkable old town seems like a museum village, the oldest settlement traces date back over 4,000 years, deep into the Saqqaaq culture. Join your experts to hike over rocks and through tundra - to relics from the whaling era. A hike to Tele Island will also take you back thousands of years to see ancient ruins and graves, crowned by magnificent views of Sisimiut and the coast.

Tip for ornithologists: Look forward to the surprises that await you once again. Perhaps you will see purple sandpipers, polar gulls, peregrine falcons and ravens - and in Disko Bay, with a bit of luck, the world's largest falcon, the grey falcon.

Thu, 08.07.2027 Kangerlussuaq/Greenland

Arrival 06.00 hrs

Charter flight from Kangerlussuaq to Germany

Please note:

Wild Earth Travel
Small Ships, Big Adventures

0800 945 3327 (within New Zealand) | +64 (0) 3 365 1355 | **1800 107 715** (within Australia)

info@wildearth-travel.com | wildearth-travel.com



Wild Earth Travel

Small Ships, Big Adventures

wildearth-travel.com

info@wildearth-travel.com

Itineraries are subject to change.



Wild Earth Travel

Small Ships, Big Adventures

0800 945 3327 (within New Zealand) | +64 (0) 3 365 1355 | **1800 107 715** (within Australia)

info@wildearth-travel.com | **wildearth-travel.com**



Wild Earth Travel

Small Ships, Big Adventures

wildearth-travel.com

info@wildearth-travel.com

YOUR SHIP: HANSEATIC INSPIRATION/NATURE/SPIRIT

YOUR SHIP:	Hanseatic
VESSEL TYPE:	Inspiration/Nature/Spirit
LENGTH:	138 m
PASSENGER CAPACITY:	230
BUILT/REFURBISHED:	2021

The HANSEATIC inspiration, a small, state-of-the-art expedition ship with a maximum of 230 guests, offers a perfect blend of adventure and comfort for explorers seeking to uncover the world's wonders. As an international vessel conducting cruises in both English and German, it brings over 30 years of expertise from a market leader in German-speaking countries to every journey. Each expedition is a masterpiece, passionately crafted to reveal far-flung worlds--be it icy realms, tropical paradises, wildlife havens, or cultural gems--making every voyage a unique discovery aboard this exceptional ship.

Features of all cabins and suites

An ocean view with even more: exclusively outside cabins and suites, almost all with balconies or French balconies

Spaciously designed - enjoy a relaxing stay in rooms from 21 m²/226 ft² up to 71 m²/764 ft² in size

Exceptionally equipped - for example, with binoculars, Nordic Walking poles, air conditioning, coffee machine and mini bar (free of charge) and 24-hour cabin service

Separable beds

Rain shower and heated wall in bathroom (e.g. for towels and

wet parkas)

Extensive infotainment with live broadcast and recordings of expert presentations, forwardview camera, navigation chart, films and much more

Restaurants

Aboard the HANSEATIC inspiration, a new kind of freedom blends adventure and pleasure with a culinary journey across three exceptional restaurants. The spacious HANSEATIC Restaurant offers flexible mealtimes and a free choice of seating, serving a daily-changing menu of global flavors inspired by local specialties, paired with fine wines and supported by attentive 24-hour cabin service. At the Lido Restaurant, guests can savor breakfast under the open sky or enjoy a perfectly grilled steak from the outdoor barbecue, complete with panoramic views and an open show kitchen. The specialty restaurant Nikkei fuses fine Japanese creations with modern Peruvian cuisine, delivering a unique dining experience that elevates exploration to new heights--all while bars in the Observation Lounge and HanseAtrium offer favorite drinks against stunning backdrops, from Nordic fjords to icy Antarctic vistas.

Fitness and Wellness

On the HANSEATIC inspiration, an extraordinary time out awaits after thrilling Zodiac rides, challenging hikes, or Arctic adventures. Unwind in the Ocean Spa, where a Finnish sauna with stunning ocean views, a gentle steam sauna, an ice fountain, and a relaxation room rejuvenate your senses, complemented by professional massages, cosmetic treatments, and eco-friendly products made from natural, vegan ingredients.

Wild Earth Travel
Small Ships, Big Adventures

0800 945 3327 (within New Zealand) | +64 (0) 3 365 1355 | **1800 107 715** (within Australia)

info@wildearth-travel.com | **wildearth-travel.com**



Wild Earth Travel

Small Ships, Big Adventures

wildearth-travel.com

info@wildearth-travel.com

Stay active in the 100 m² fitness room or separate course room--both with ocean vistas--guided by a fitness coach offering personalized advice and a variety of courses, either indoors or on deck. The pool area, with its flexible canopy, invites relaxation year-round, featuring water loungers, a whirlpool, and a bar, ensuring a perfect blend of indulgence and revitalization against the backdrop of the open sea.

Knowledge

Shore excursions and Zodiac rides come alive with deeper context through fascinating presentations in the HanseAtrium, a high-tech lounge where experts share daily precaps and recaps, doubling as an atmospheric evening bar for films and discussions. The Ocean Academy enhances the journey with a Study Wall and interactive poster of scientific insights, microscopes for exploring hidden wonders alongside experts, and Study Seats--with swivel touchscreens--for personal dives into science. Supported by travel diaries and destination videos, this immersive experience broadens horizons with cutting-edge tools and expertise.



expertise.

Wild Earth Travel

Small Ships, Big Adventures

0800 945 3327 (within New Zealand) | +64 (0) 3 365 1355 | **1800 107 715** (within Australia)

info@wildearth-travel.com | **wildearth-travel.com**

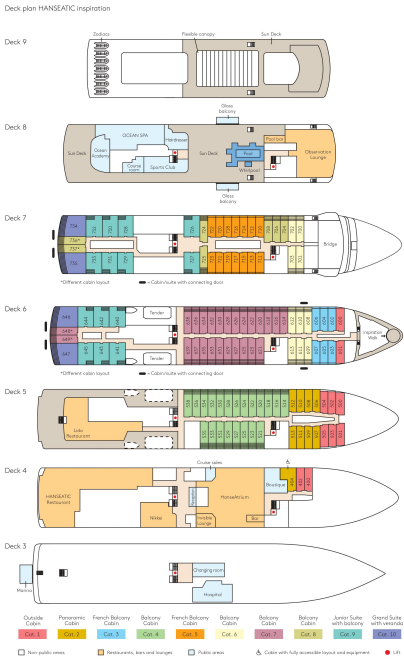


Wild Earth Travel
Small Ships, Big Adventures

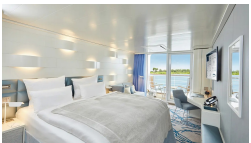
wildearth-travel.com

info@wildearth-travel.com

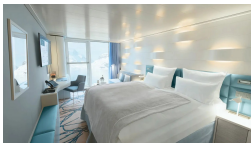
INSIDE YOUR SHIP



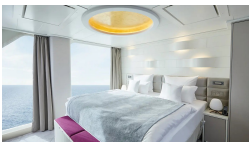
Balcony Cabin



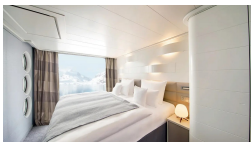
French Balcony Cabin



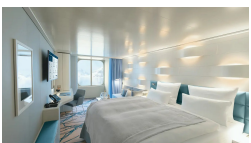
Grand Suite



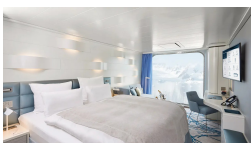
Junior Suite



Outside Cabin



Panoramic Cabin





Wild Earth Travel

Small Ships, Big Adventures

wildearth-travel.com

info@wildearth-travel.com

PRICING

23-Jun-2027 to 08-Jul-2027

Outside Cabin	12090 EUR pp
Panoramic Cabin	12090 EUR pp
French Balcony Cabin	13920 EUR pp
Balcony Cabin	15090 EUR pp
Junior Suite	20970 EUR pp
Grand Suite	27670 EUR pp



Wild Earth Travel

Small Ships, Big Adventures

0800 945 3327 (within New Zealand) | +64 (0) 3 365 1355 | **1800 107 715** (within Australia)

info@wildearth-travel.com | **wildearth-travel.com**