

# Wild Earth Travel

*Small Ships, Big Adventures*

[wildearth-travel.com](http://wildearth-travel.com)

[info@wildearth-travel.com](mailto:info@wildearth-travel.com)

## EXPEDITION ANTARCTICA: WILDLIFE WORLDS INTENSIVE

A delight for ornithologists and biologists: a route with plenty of time to discover the Falkland Islands - from the bird paradise to the capital Stanley. A true classic with many wildlife sightings and observations of nature.



### ITINERARY

Sun, 24.01.2027 Charter flight from Buenos Aires to Ushuaia

Ushuaia/Argentina, departure 18.00 hrs

Mon, 25.01.2027 Relaxation at sea

Tue, 26.01.2027 - Wed, 27.01.2027 Falkland Islands

The British overseas territory has more than just a turbulent history; discover its impressive birdlife. Experience this unique ecosystem, which is home to around 60 species, during Zodiac landings. Together with your experts, you can observe rockhopper and Magellanic penguins, who share their habitat with kelp geese, striated caracaras, king cormorants as well as black-browed and wandering albatrosses. Natural history walks take you past the island's typical dwarf shrubs and tall tussock grass. The first human footprints on the Falkland Islands date back to 1690, and it wasn't until 1764 that the first settlement was established. The small capital city of Stanley has a very British feel to it today. The former whaling and sealing settlement boasts Victorian houses, small gardens and the southernmost Anglican church in the world.

Wild Earth Travel

*Small Ships, Big Adventures*

0800 945 3327 (within New Zealand) | +64 (0) 3 365 1355 | 1800 107 715 (within Australia)

[info@wildearth-travel.com](mailto:info@wildearth-travel.com) | [wildearth-travel.com](http://wildearth-travel.com)



# Wild Earth Travel

*Small Ships, Big Adventures*

**wildearth-travel.com**

**info@wildearth-travel.com**

Thu, 28.01.2027 - Fri, 29.01.2027 Relaxation at sea

Sat, 30.01.2027 - Mon, 01.02.2027 South Georgia

Days of adventure and great experiences lie ahead of you, when rugged peaks on the horizon signal your approach to this unique animal paradise. South Georgia is often referred to as the "cold Serengeti". Hundreds of thousands of king penguins blanket the island's coastlines and mountain slopes. On numerous trips and landings with the Zodiacs, you will experience the animal world from a respectful distance. With a little luck, you will see elephant seals fighting over a harem or gentoo and king penguins in their natural habitat. Your experts, who have extensive experience in the Antarctic, will familiarise you with the flora and fauna. The pioneering days of polar research will come to life for you in Grytøyen: in the former whaling station, you will visit the grave of Sir Ernest Shackleton and commemorate the heroic efforts with which he once saved his crew.

Tue, 02.02.2027 Relaxation at sea

Wed, 03.02.2027 - Wed, 10.02.2027 Antarctica Exploration

South Orkney Islands , South Shetland Islands , Weddell Sea , Antarctic Peninsula

The South Orkney Islands, a small group of islands with a surface area of around 620 km<sup>2</sup> (239 mi<sup>2</sup>), are located in the Scotia Sea. A lonely, glaciated world with ice deserts - and more animal species than on the Galapagos Islands, as scientists have discovered. Who would guess there are around 1,200 animal species here? The South Orkney Islands are home to numerous varieties of penguin, whale and seal, as well as leopard seals. With luck, you will also see icebergs drifting off the rugged coast. In contrast, the Argentinian Orcadas research station - which has been staffed since 1904 - houses just a few people. Depending on the conditions and approval from the station, you will land in the Zodiacs to gain an impression of the isolated life of the polar researchers in the area.

The South Shetland Islands form a long chain in the ocean. The island group opens up exciting chapters of Antarctic exploration and provides expert insights into geology. Here, your small manoeuvrable ship can again prove its expedition capability when it sails into the flooded caldera of the extinct

volcano that forms Deception Island. Flanked by rock faces up to 50 m (164 ft) in height, the black sand in front of you gives off steam as a testament to a past eruption - and you in the heart of the scenery. Elephant Island, where history surrounds you, is legendary: polar explorer Sir Ernest Shackleton and his crew spent months here after abandoning their ship in the ice. You, too, will be enchanted by the scenery. Jagged crags loom fiercely on the horizon and the evening sun casts a delicate pink glow over the snowfields.

This expedition takes you in a flexible route towards adventure through the Weddell Sea. The ice cracks and crunches around the ship's reinforced bow, conveying just how challenging the hardships were that the pioneers of polar research had to endure. Where weather and ice conditions dictate the route, the experienced crew reacts flexibly and spontaneously to provide you with unforgettable expedition moments. The Weddell Sea is home to spectacular ice formations - from majestic tabular icebergs occupied by Adelie penguins to ice shelves as tall as white cliffs and dense carpets of pack ice. How far into this region can the expedition ship actually make it? On the volcanic Paulet Island, for example, you will be greeted by numerous penguins, providing vivid impressions.

The Antarctic Peninsula, part of the coldest continent on Earth, may seem inhospitable at first glance, but it is actually a paradise for countless animal species that have adapted perfectly. Enjoy unforgettable moments when, for example, you set foot on the Antarctic mainland near to Paradise Bay. Snow-covered peaks, imposing icebergs and towering glaciers surround you. Unbelievable views also await you in the bay of Neko Harbor with its rocky massifs. The monumental dimensions are emphasised by the tuya or flat-topped volcano Brown Bluff: its tuff cliffs, towering more than 700 m (2,297 ft) high, rise between two mighty volcanoes. This panorama is accompanied by the cries of countless Dominican gulls, Cape petrels and snow petrels. One of the most impressive shipping passages in the world is the Lemaire Channel: mountains up to 1,000 m (3,281 ft) high line the strait of water. The Neumayer Channel provides panoramic views of glaciers that are no less breathtaking.

Thu, 11.02.2027 - Fri, 12.02.2027 Sailing through the Drake Passage

Sat, 13.02.2027 Ushuaia/Argentina

Arrival 06.00 hrs

Charter flight from Ushuaia to Buenos Aires

Wild Earth Travel

*Small Ships, Big Adventures*

**0800 945 3327** (within New Zealand) | +64 (0) 3 365 1355 | **1800 107 715** (within Australia)

info@wildearth-travel.com | wildearth-travel.com





# Wild Earth Travel

*Small Ships, Big Adventures*



**wildearth-travel.com**

**info@wildearth-travel.com**

Please note:

Itineraries are subject to change.



**Wild Earth Travel**

*Small Ships, Big Adventures*

**0800 945 3327** (within New Zealand) | +64 (0) 3 365 1355 | **1800 107 715** (within Australia)

info@wildearth-travel.com | **wildearth-travel.com**





# Wild Earth Travel

*Small Ships, Big Adventures*

**wildearth-travel.com**

**info@wildearth-travel.com**

## YOUR SHIP: HANSEATIC INSPIRATION/NATURE/SPIRIT

<b>YOUR SHIP:</b>	<b>Hanseatic Inspiration/Nature/Spirit</b>
<b>VESSEL TYPE:</b>	<b>Expedition</b>
<b>LENGTH:</b>	<b>138 m</b>
<b>PASSENGER CAPACITY:</b>	<b>230</b>
<b>BUILT/REFURBISHED:</b>	<b>2021</b>

The HANSEATIC inspiration, a small, state-of-the-art expedition ship with a maximum of 230 guests, offers a perfect blend of adventure and comfort for explorers seeking to uncover the world's wonders. As an international vessel conducting cruises in both English and German, it brings over 30 years of expertise from a market leader in German-speaking countries to every journey. Each expedition is a masterpiece, passionately crafted to reveal far-flung worlds--be it icy realms, tropical paradises, wildlife havens, or cultural gems--making every voyage a unique discovery aboard this exceptional ship.

Features of all cabins and suites

An ocean view with even more: exclusively outside cabins and suites, almost all with balconies or French balconies

Spaciously designed - enjoy a relaxing stay in rooms from 21 m<sup>2</sup>/226 ft<sup>2</sup> up to 71 m<sup>2</sup>/764 ft<sup>2</sup> in size

Exceptionally equipped - for example, with binoculars, Nordic Walking poles, air conditioning, coffee machine and mini bar (free of charge) and 24-hour cabin service

Separable beds

Rain shower and heated wall in bathroom (e.g. for towels and

wet parkas)

Extensive infotainment with live broadcast and recordings of expert presentations, forwardview camera, navigation chart, films and much more

Restaurants

Aboard the HANSEATIC inspiration, a new kind of freedom blends adventure and pleasure with a culinary journey across three exceptional restaurants. The spacious HANSEATIC Restaurant offers flexible mealtimes and a free choice of seating, serving a daily-changing menu of global flavors inspired by local specialties, paired with fine wines and supported by attentive 24-hour cabin service. At the Lido Restaurant, guests can savor breakfast under the open sky or enjoy a perfectly grilled steak from the outdoor barbecue, complete with panoramic views and an open show kitchen. The specialty restaurant Nikkei fuses fine Japanese creations with modern Peruvian cuisine, delivering a unique dining experience that elevates exploration to new heights--all while bars in the Observation Lounge and HanseAtrium offer favorite drinks against stunning backdrops, from Nordic fjords to icy Antarctic vistas.

Fitness and Wellness

On the HANSEATIC inspiration, an extraordinary time out awaits after thrilling Zodiac rides, challenging hikes, or Arctic adventures. Unwind in the Ocean Spa, where a Finnish sauna with stunning ocean views, a gentle steam sauna, an ice fountain, and a relaxation room rejuvenate your senses, complemented by professional massages, cosmetic treatments, and eco-friendly products made from natural, vegan ingredients.



Wild Earth Travel  
*Small Ships, Big Adventures*

**0800 945 3327** (within New Zealand) | +64 (0) 3 365 1355 | **1800 107 715** (within Australia)

info@wildearth-travel.com | **wildearth-travel.com**



# Wild Earth Travel

*Small Ships, Big Adventures*

**wildearth-travel.com**

**info@wildearth-travel.com**

Stay active in the 100 m<sup>2</sup> fitness room or separate course room--both with ocean vistas--guided by a fitness coach offering personalized advice and a variety of courses, either indoors or on deck. The pool area, with its flexible canopy, invites relaxation year-round, featuring water loungers, a whirlpool, and a bar, ensuring a perfect blend of indulgence and revitalization against the backdrop of the open sea.

#### Knowledge

Shore excursions and Zodiac rides come alive with deeper context through fascinating presentations in the HanseAtrium, a high-tech lounge where experts share daily precaps and recaps, doubling as an atmospheric evening bar for films and discussions. The Ocean Academy enhances the journey with a Study Wall and interactive poster of scientific insights, microscopes for exploring hidden wonders alongside experts, and Study Seats--with swivel touchscreens--for personal dives into science. Supported by travel diaries and destination videos, this immersive experience broadens horizons with cutting-edge tools and expertise.



expertise.

Wild Earth Travel

*Small Ships, Big Adventures*

**0800 945 3327** (within New Zealand) | +64 (0) 3 365 1355 | **1800 107 715** (within Australia)

info@wildearth-travel.com | **wildearth-travel.com**



# Wild Earth Travel

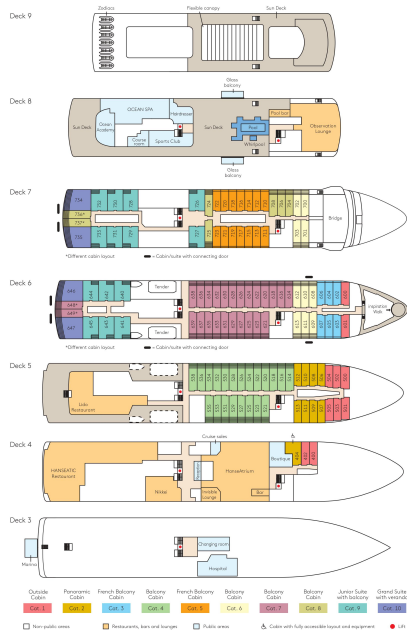
*Small Ships, Big Adventures*

[wildearth-travel.com](http://wildearth-travel.com)

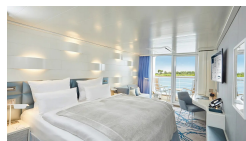
[info@wildearth-travel.com](mailto:info@wildearth-travel.com)

## INSIDE YOUR SHIP

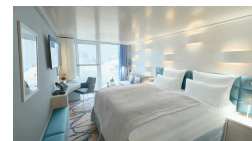
Deck plan HANSEATIC Inspiration



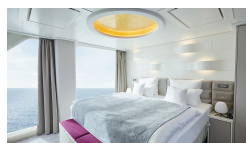
Balcony Cabin



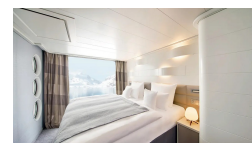
French Balcony Cabin



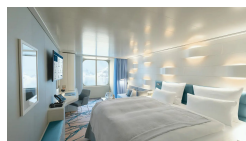
Grand Suite



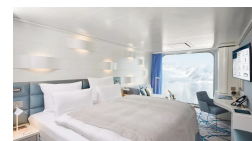
Junior Suite



Outside Cabin



Panoramic Cabin



Wild Earth Travel  
*Small Ships, Big Adventures*

0800 945 3327 (within New Zealand) | +64 (0) 3 365 1355 | 1800 107 715 (within Australia)

[info@wildearth-travel.com](mailto:info@wildearth-travel.com) | [wildearth-travel.com](http://wildearth-travel.com)





# Wild Earth Travel

*Small Ships, Big Adventures*



**wildearth-travel.com**

**info@wildearth-travel.com**

## PRICING

**24-Jan-2027 to 13-Feb-2027**

<b>Outside Cabin</b>	<b>17990 EUR pp</b>
<b>Panoramic Cabin</b>	<b>17990 EUR pp</b>
<b>French Balcony Cabin</b>	<b>20990 EUR pp</b>
<b>Balcony Cabin</b>	<b>22740 EUR pp</b>
<b>Junior Suite</b>	<b>28990 EUR pp</b>
<b>Grand Suite</b>	<b>41990 EUR pp</b>



**Wild Earth Travel**

*Small Ships, Big Adventures*

**0800 945 3327** (within New Zealand) | +64 (0) 3 365 1355 | **1800 107 715** (within Australia)

info@wildearth-travel.com | **wildearth-travel.com**