

# Wild Earth Travel

*Small Ships, Big Adventures*

**wildearth-travel.com**

**info@wildearth-travel.com**

## EXPEDITION ANTARCTICA: FESTIVE DAYS AT THE END OF THE EARTH

This festive Christmas cruise offers a magical journey through Antarctica's icy wonderland, timed perfectly to witness penguins breeding and fur seals nurturing their young, creating unforgettable wildlife encounters. Highlights include a flexible route weaving past majestic glaciers and towering icebergs, opportunities to spot penguins, whales, seals, and seabirds, and active adventures via Zodiac rides, landings, and hikes. Expert-led presentations, pre-caps, and recaps enrich the experience, while the itinerary--from the Falklands and South Georgia to the Antarctic Peninsula--delivers spectacular passages and immersive exploration, starting and ending in Ushuaia.



### ITINERARY

Sat, 20.12.2025 Charter flight from Buenos Aires to Ushuaia/Argentina

Ushuaia/Argentina, departure 18.00 hrs

Sun, 21.12.2025 Relaxation at sea

Mon, 22.12.2025 - Tue, 23.12.2025 Falkland Islands

Experience this bird paradise the Falkland Islands, which is home to around 60 species, at close range during your Zodiac landings. Observe rockhopper and Magellanic penguins, who share their habitat with kelp geese, striated caracaras, king cormorants as well as black-browed and wandering albatrosses.

Wed, 24.12.2025 - Thu, 25.12.2025 Relaxation at sea

Fri, 26.12.2025 - Sun, 28.12.2025 South Georgia

Wild Earth Travel

*Small Ships, Big Adventures*

**0800 945 3327** (within New Zealand) | +64 (0) 3 365 1355 | **1800 107 715** (within Australia)

info@wildearth-travel.com | **wildearth-travel.com**



# Wild Earth Travel

*Small Ships, Big Adventures*

**wildearth-travel.com**

**info@wildearth-travel.com**

In South Gorgia live Hundreds of thousands of king penguins side by side with elephant seals and fur seals on the coasts and cliffs - overwhelming natural spectacles that you can observe from a respectful distance after landing on one of the black shores. In addition, trace the footsteps of the explorer Sir Ernest Shackleton, who found his final resting place here in 1922.

Itineraries are subject to change.

**Mon, 29.12.2025 Relaxation at sea**

**Tue, 30.12.2025 - Tue, 06.01.2026 Exploration Antarctica**

South Orkney Islands , South Shetland Islands , Weddell Sea , Antarctic Peninsula

The South Orkney Islands are a lonely, glaciated world of icy wilderness located in the Scotia Sea. They are home to chinstrap and Adelie penguins, which can be spotted here. With luck, you'll also see icebergs drifting off the rugged coast. Find out how the polar explorers live at the Argentinian Orcadas Station (depending on weather and authorisation). Experience the South Shetland Islands between ice and awe intensively - on deck as well as by Zodiac. The Weddell Sea is home to stunning ice formations - whether as sparkling blue-and-white sculptures, gigantic tabular icebergs or creaking sheets of dense pack ice. Off the Antarctic Peninsula, your ship sails into the centre of the flooded caldera of Deception Island. Majestic glaciers and gigantic icebergs shimmer in Paradise Bay. The Lemaire Channel is also impressive, flanked by mighty mountains up to 1,000 m (3,281 ft) high. Icebergs ahead: at the bow and on the open deck areas, you can enjoy the best views of the white wonderland. You may even spot the flukes of blue whales, sperm whales and humpback whales as well as orcas.

**Wed, 07.01.2026 - Thu, 08.01.2026 Sailing through the Drake Passage**

**Fri, 09.01.2026 Ushuaia/Argentina**

Arrival 6.00 hrs  
Charter flight to Buenos Aires

Please note:



Wild Earth Travel  
*Small Ships, Big Adventures*

**0800 945 3327** (within New Zealand) | +64 (0) 3 365 1355 | **1800 107 715** (within Australia)

info@wildearth-travel.com | **wildearth-travel.com**

# Wild Earth Travel

*Small Ships, Big Adventures*

**wildearth-travel.com**

**info@wildearth-travel.com**

## YOUR SHIP: HANSEATIC INSPIRATION/NATURE/SPIRIT

<b>YOUR SHIP:</b>	<b>Hanseatic Inspiration/Nature/Spirit</b>
<b>VESSEL TYPE:</b>	<b>Expedition</b>
<b>LENGTH:</b>	<b>138 m</b>
<b>PASSENGER CAPACITY:</b>	<b>230</b>
<b>BUILT/REFURBISHED:</b>	<b>2021</b>

The HANSEATIC inspiration, a small, state-of-the-art expedition ship with a maximum of 230 guests, offers a perfect blend of adventure and comfort for explorers seeking to uncover the world's wonders. As an international vessel conducting cruises in both English and German, it brings over 30 years of expertise from a market leader in German-speaking countries to every journey. Each expedition is a masterpiece, passionately crafted to reveal far-flung worlds--be it icy realms, tropical paradises, wildlife havens, or cultural gems--making every voyage a unique discovery aboard this exceptional ship.

Features of all cabins and suites

An ocean view with even more: exclusively outside cabins and suites, almost all with balconies or French balconies

Spaciously designed - enjoy a relaxing stay in rooms from 21 m<sup>2</sup>/226 ft<sup>2</sup> up to 71 m<sup>2</sup>/764 ft<sup>2</sup> in size

Exceptionally equipped - for example, with binoculars, Nordic Walking poles, air conditioning, coffee machine and mini bar (free of charge) and 24-hour cabin service

Separable beds

Rain shower and heated wall in bathroom (e.g. for towels and

wet parkas)

Extensive infotainment with live broadcast and recordings of expert presentations, forwardview camera, navigation chart, films and much more

Restaurants

Aboard the HANSEATIC inspiration, a new kind of freedom blends adventure and pleasure with a culinary journey across three exceptional restaurants. The spacious HANSEATIC Restaurant offers flexible mealtimes and a free choice of seating, serving a daily-changing menu of global flavors inspired by local specialties, paired with fine wines and supported by attentive 24-hour cabin service. At the Lido Restaurant, guests can savor breakfast under the open sky or enjoy a perfectly grilled steak from the outdoor barbecue, complete with panoramic views and an open show kitchen. The specialty restaurant Nikkei fuses fine Japanese creations with modern Peruvian cuisine, delivering a unique dining experience that elevates exploration to new heights--all while bars in the Observation Lounge and HanseAtrium offer favorite drinks against stunning backdrops, from Nordic fjords to icy Antarctic vistas.

Fitness and Wellness

On the HANSEATIC inspiration, an extraordinary time out awaits after thrilling Zodiac rides, challenging hikes, or Arctic adventures. Unwind in the Ocean Spa, where a Finnish sauna with stunning ocean views, a gentle steam sauna, an ice fountain, and a relaxation room rejuvenate your senses, complemented by professional massages, cosmetic treatments, and eco-friendly products made from natural, vegan ingredients.



# Wild Earth Travel

*Small Ships, Big Adventures*

**wildearth-travel.com**

**info@wildearth-travel.com**

Stay active in the 100 m<sup>2</sup> fitness room or separate course room--both with ocean vistas--guided by a fitness coach offering personalized advice and a variety of courses, either indoors or on deck. The pool area, with its flexible canopy, invites relaxation year-round, featuring water loungers, a whirlpool, and a bar, ensuring a perfect blend of indulgence and revitalization against the backdrop of the open sea.

## Knowledge

Shore excursions and Zodiac rides come alive with deeper context through fascinating presentations in the HanseAtrium, a high-tech lounge where experts share daily precaps and recaps, doubling as an atmospheric evening bar for films and discussions. The Ocean Academy enhances the journey with a Study Wall and interactive poster of scientific insights, microscopes for exploring hidden wonders alongside experts, and Study Seats--with swivel touchscreens--for personal dives into science. Supported by travel diaries and destination videos, this immersive experience broadens horizons with cutting-edge tools and expertise.



expertise.

Wild Earth Travel

*Small Ships, Big Adventures*

**0800 945 3327** (within New Zealand) | +64 (0) 3 365 1355 | **1800 107 715** (within Australia)

info@wildearth-travel.com | **wildearth-travel.com**

# Wild Earth Travel

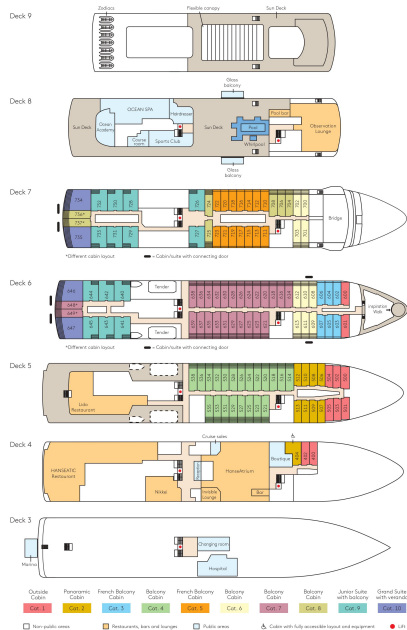
*Small Ships, Big Adventures*

[wildearth-travel.com](http://wildearth-travel.com)

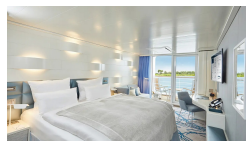
[info@wildearth-travel.com](mailto:info@wildearth-travel.com)

## INSIDE YOUR SHIP

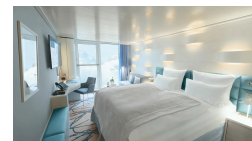
Deck plan HANSEATIC Inspiration



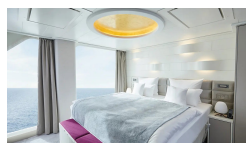
Balcony Cabin



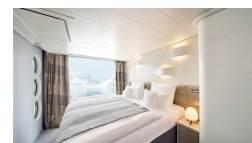
French Balcony Cabin



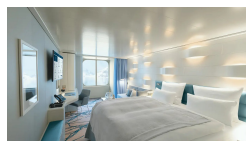
Grand Suite



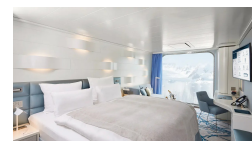
Junior Suite



Outside Cabin



Panoramic Cabin



Wild Earth Travel  
*Small Ships, Big Adventures*

0800 945 3327 (within New Zealand) | +64 (0) 3 365 1355 | 1800 107 715 (within Australia)

[info@wildearth-travel.com](mailto:info@wildearth-travel.com) | [wildearth-travel.com](http://wildearth-travel.com)



# Wild Earth Travel

*Small Ships, Big Adventures*



**wildearth-travel.com**

**info@wildearth-travel.com**

## PRICING

**20-Dec-2025 to 09-Jan-2026**

<b>Outside Cabin</b>	<b>20190 EUR pp</b>
<b>French Balcony Cabin</b>	<b>22150 EUR pp</b>
<b>Balcony Cabin</b>	<b>24080 EUR pp</b>
<b>Junior Suite</b>	<b>30130 EUR pp</b>
<b>Grand Suite</b>	<b>41060 EUR pp</b>
<b>Panoramic Cabin</b>	<b>0 pp</b>



**Wild Earth Travel**

*Small Ships, Big Adventures*

**0800 945 3327** (within New Zealand) | +64 (0) 3 365 1355 | **1800 107 715** (within Australia)

info@wildearth-travel.com | **wildearth-travel.com**