

# Wild Earth Travel

*Small Ships, Big Adventures*

**wildearth-travel.com**

**info@wildearth-travel.com**

## AN ESCAPE IN THE HEART OF MELANESIA LUXURY CRUISE

Leaving from Darwin, in Australia's Northern Territory, PAUL GAUGUIN Cruises is offering a unique 17-day journey featuring idyllic landscapes, lush nature and ancestral civilisations with secular traditions. Aboard Le Paul Gauguin, a ship with a decidedly relaxed and international atmosphere, set off to discover the ancestral lands of Australia and four Melanesian treasures: Papua New Guinea, the Vanuatu archipelago, the Solomons and the Fiji islands. On cosmopolitan Thursday Island, in the far north of the Australian territory, make the most of a visit to discover the history of this part of the Pacific during the Second World War. The Paul Gauguin will set sail for Papua New Guinea, a fascinating land that is home to no fewer than 700 ethnic groups within a highly diverse yet mainly unexplored, ecosystem. Setting sail for the Salomon Islands! You will stop over in Honiara on the large island of Guadalcanal, where exoticism and beauty go hand in hand, from paradisiacal waterfalls to lush green hills. Then, the Paul Gauguin sails towards heavenly lands, where white sandy beaches encircle luxuriant forests with unique ecosystems, and legends and myths remain engraved in memories and traditions... In Port-Vila, capital of Vanuatu, you will relish the unforgettable sight of magnificent bays, a colonial heritage, paradise beaches and enchanting waterfalls. In Espiritu Santo, the archipelago's main island, you are sure to be captivated by the unspoilt seabed surrounding this luxuriant islet. Your journey will end in Lautoka in Fiji, famous for its sugar cane crops.



### ITINERARY

#### Day 1 DARWIN

Darwin is located in Australia's Northern Territory which is also known as the "Top End". It is the capital city and the most populated town of the Northern Territory. Darwin is a beautiful tropical city, a melting pot of people and cultures, over 50 different cultures live and work side by side that prides itself in its unique and friendly laid-back lifestyle. Come discover the town's still recent history through its emblematic buildings such as the new Parliament House opened in 1994, a magnificent example of tropical architecture or

Wild Earth Travel

*Small Ships, Big Adventures*

**0800 945 3327** (within New Zealand) | +64 (0) 3 365 1355 | **1800 107 715** (within Australia)

info@wildearth-travel.com | **wildearth-travel.com**

# Wild Earth Travel

*Small Ships, Big Adventures*

**wildearth-travel.com**

**info@wildearth-travel.com**

Admiralty House declared heritage place, a tropical-style home elevated on stilts that has survived two cyclones and numerous air raids.

## Days 2 - 3 AT SEA

During your journey at sea, make the most of the many services and activities on board. Treat yourself to a moment of relaxation in the spa or stay in shape in the fitness centre. Depending on the season, let yourself be tempted by the swimming pool or a spot of sunbathing. This journey without a port of call will also be an opportunity to enjoy the conferences or shows proposed on board, depending on the activities offered, or to do some shopping in the boutique or to meet the PONANT photographers in their dedicated space. As for lovers of the open sea, they will be able to visit the ship's upper deck to admire the spectacle of the waves and perhaps be lucky enough to observe marine species. A truly enchanted interlude, combining comfort, rest and entertainment.

## Day 4 THURSDAY ISLAND

Located at Australia's northernmost tip, Thursday Island is one of more than a hundred in the Torres Strait, between Cape York Peninsula and Papua New Guinea. The historic military fort of Green Hill offers magnificent views and you can discover more about the region and its pearling history at the Gab Titui Cultural Centre.

## Day 5 AT SEA

During your journey at sea, make the most of the many services and activities on board. Treat yourself to a moment of relaxation in the spa or stay in shape in the fitness centre. Depending on the season, let yourself be tempted by the swimming pool or a spot of sunbathing. This journey without a port of call will also be an opportunity to enjoy the conferences or shows proposed on board, depending on the activities offered, or to do some shopping in the boutique or to meet the PONANT photographers in their dedicated space. As for lovers of the open sea, they will be able to visit the ship's upper deck to admire the spectacle of the waves and perhaps be lucky enough to observe marine species. A truly enchanted interlude, combining comfort, rest and entertainment.

## Day 6 ALOTAU

Alotau became the provincial capital of Milne Bay in 1969 and today has a population of approximately 16,000. It serves as our port of entry into Papua New Guinea. Missionaries, miners, pearlers, Japanese and American warships have all contributed to the History of Milne Bay. Perhaps the most significant history surrounds the Battle of Milne Bay. It was here that the invading Japanese army suffered their first land defeat in the Pacific War in 1942. A memorial park at the battle site commemorates the event. The local people are warm and welcoming resulting in one of the most relaxed, secure and easy-going towns in Papua New Guinea. Join your expedition team for a tour taking in the town markets and WWII memorials.

## Day 7 SAMARAI ISLAND

The Samarai islands are located in the China Strait off the south-eastern tip of New Guinea. In its colonial heyday it was said to be one of the most beautiful places in the Pacific. The island was declared a National Historical Heritage Island by the government of Papua New Guinea in 2006. Just 3km west of Samarai, Kwato Island was once an educational center and home to a thriving boat building industry. Following the old tree-lined road to the top of the island reveals a stonewalled church that was built in 1937 and remains a testimony to the missionaries of a bygone era. Join your expedition team for a guided walk on Samarai and Kwato Islands. You also will enjoy swimming and snorkelling on nearby Deka Deka island.

## Day 8 AT SEA

During your journey at sea, make the most of the many services and activities on board. Treat yourself to a moment of relaxation in the spa or stay in shape in the fitness centre. Depending on the season, let yourself be tempted by the swimming pool or a spot of sunbathing. This journey without a port of call will also be an opportunity to enjoy the conferences or shows proposed on board, depending on the activities offered, or to do some shopping in the boutique or to meet the PONANT photographers in their dedicated space. As for lovers of the open sea, they will be able to visit the ship's upper deck to admire the spectacle of the waves and perhaps be lucky enough to observe marine species. A truly enchanted interlude, combining comfort, rest and entertainment.

## Days 9 - 10 HONIARA, GUADALCANAL ISLAND

Wild Earth Travel

*Small Ships, Big Adventures*

**0800 945 3327** (within New Zealand) | +64 (0) 3 365 1355 | **1800 107 715** (within Australia)

info@wildearth-travel.com | wildearth-travel.com



# Wild Earth Travel

*Small Ships, Big Adventures*

**wildearth-travel.com**

**info@wildearth-travel.com**

Honiara is the capital city of The Solomon Islands, administered as a provincial town on the north-western coast of Guadalcanal Island. Honiara comes from the local Ghari Language "naho-ni-ara" meaning 'facing the ara', the place where the southeast winds meet the land. Discover this city, its beautiful landscape, and the significant role it played in World War II. Particularly The Battle of Henderson Field, the last of the three major land offensives conducted by the Japanese in 1942.

## Days 11 - 12 AT SEA

During your journey at sea, make the most of the many services and activities on board. Treat yourself to a moment of relaxation in the spa or stay in shape in the fitness centre. Depending on the season, let yourself be tempted by the swimming pool or a spot of sunbathing. This journey without a port of call will also be an opportunity to enjoy the conferences or shows proposed on board, depending on the activities offered, or to do some shopping in the boutique or to meet the PONANT photographers in their dedicated space. As for lovers of the open sea, they will be able to visit the ship's upper deck to admire the spectacle of the waves and perhaps be lucky enough to observe marine species. A truly enchanted interlude, combining comfort, rest and entertainment.

## Day 13 ESPIRITU SANTO ISLAND

At the end of the world, in the north of New Caledonia, lies Vanuatu, a little archipelago that subsists mainly from fishing and farming. It is composed of several islands, Espiritu Santo being the largest and one of the most beautiful. You can meet the people here who are very welcoming and who live in harmony with nature. Plus you will see unimaginable landscapes formed of volcanic rocks, as well as sandy beaches and lagoons beckoning you to dive into their of turquoise waters. You will be surprised to find, in the middle of dense vegetation, brackish water with an amazing ecosystem called "blue holes". If paradise exists, it must be here.

## Day 14 PORT VILA, EFATE

Port Vila is the cradle of an insular harmony where time seems to stand still, a tropical pearl in Vanuatu emerging from the turquoise waters of the Pacific

Ocean, a place that inspires contemplation and daydreaming. Beneath an azure sky, the colourful markets reveal the very essence of Vanuatuan culture. The stalls here are overflowing with tropical fruit bursting with sunshine, while the artisans showcase their talents, weaving vegetable-fibre baskets and sculpting traditional masks with enigmatic faces. On the lush heights in the inland region of Vanuatu's capital, the waterfalls whisper secret songs, creating an aquatic symphony that resonates in the heart of travellers in search of magic.

## Days 15 - 16 AT SEA

During your journey at sea, make the most of the many services and activities on board. Treat yourself to a moment of relaxation in the spa or stay in shape in the fitness centre. Depending on the season, let yourself be tempted by the swimming pool or a spot of sunbathing. This journey without a port of call will also be an opportunity to enjoy the conferences or shows proposed on board, depending on the activities offered, or to do some shopping in the boutique or to meet the PONANT photographers in their dedicated space. As for lovers of the open sea, they will be able to visit the ship's upper deck to admire the spectacle of the waves and perhaps be lucky enough to observe marine species. A truly enchanted interlude, combining comfort, rest and entertainment.

## Day 17 LAUTOKA, VITI LEVU ISLAND

Lautoka is the second largest city of Fiji. Located on the western side of the island of Viti Levu, 24 kilometres north of Nadi. Lying in the heart of Fiji's sugar cane growing region, it is known as the Sugar City. Lautoka is the gateway to Fiji's "Sun coast" a land of abundant sunshine, azure skies and dramatic grass-covered peaks chequered with sugar-cane fields, rural villages and quaint market towns.

### Please Note:

Itineraries are subject to change.

Wild Earth Travel

*Small Ships, Big Adventures*

**0800 945 3327** (within New Zealand) | +64 (0) 3 365 1355 | **1800 107 715** (within Australia)

info@wildearth-travel.com | wildearth-travel.com

# Wild Earth Travel

*Small Ships, Big Adventures*



**wildearth-travel.com**

**info@wildearth-travel.com**

## YOUR SHIP: LE JACQUES CARTIER

**YOUR SHIP:** Le Jacques Cartier

**VESSEL TYPE:** Luxury

**LENGTH:**

**PASSENGER CAPACITY:** 92 cabins

**BUILT/REFURBISHED:** 2018/2019

Featuring innovative and environmentally-friendly equipment, elegantly designed staterooms, spacious suites with large windows, and lounge areas that open onto the outside, this new limited-capacity yacht boasting just 92 staterooms and suites will offer you a truly unique cruising experience.

As the sixth ship in a new series that remains true to the Ponant spirit, Le Jacques Cartier will embody the unique atmosphere that is the cruise line's hallmark: a subtle blend of refinement, intimacy and comfort.

Aboard this ship that flies the French flag, you will experience the incomparable pleasure of an intimate cruise, with the possibility of exploring an ever-increasing range of destinations in an ethnic-chic ambiance with luxury service.

Experience a luxurious setting where the accent is on authenticity and passion for travel.

### RESTAURANTS

As it is an essential part of French culture, gastronomy will naturally have pride of place aboard this new ship.

To the back of Deck 4, you will find a 260 m<sup>2</sup> panoramic restaurant which can accommodate all of our passengers in a single sitting. Designed differently to that on our other ships, this

dining area, which opens onto the outside, will have a buffet of salads, desserts and cheeses at your disposal. Our discreet and attentive crew will provide table service for hot meals.

In a relaxed atmosphere, an outdoor grill on Deck 3 will serve grilled meats with a variety of salads and desserts.

### PUBLIC AREAS

Le Jacques Cartier has many common areas that are designed and equipped to meet all of your needs while preserving the intimacy of each passenger.

A 140 m<sup>2</sup> reception area includes:

A reception/concierge desk,

An excursions desk,

The ship's administrative services,

The sales office, manned by our Guest Relations Officer,

Our 50 m<sup>2</sup> boutique which sells clothing, jewellery, beauty products, postcards and various accessories,

Toilets accessible to passengers with reduced mobility.

A new hydraulic platform with adjustable height provides:

Easier boarding than on any other cruise ship,

Easier Zodiac embarkation and disembarkation for expeditions,

Easier access to the sea for swimming and practising various water sports such as kayaking or paddle-boarding.

A pool deck offering:

A pool with a panoramic view, equipped with a counter-current swimming system,

A pleasant solarium,

An outdoor bar and lounge with armchairs and sofas.

A 200 m<sup>2</sup> main lounge which can accommodate all of our passengers to share convivial moments and to host activities

Wild Earth Travel

*Small Ships, Big Adventures*

**0800 945 3327** (within New Zealand) | +64 (0) 3 365 1355 | **1800 107 715** (within Australia)

info@wildearth-travel.com | wildearth-travel.com



# Wild Earth Travel

*Small Ships, Big Adventures*



**wildearth-travel.com**

**info@wildearth-travel.com**

organised during the day or evening.

Lastly, a theatre that seats 188, equipped with:

The latest sound and lighting technology,

A LED wall as the stage backdrop, for the projection of high-resolution images and videos.



and videos.

**Wild Earth Travel**  
*Small Ships, Big Adventures*

**0800 945 3327** (within New Zealand) | +64 (0) 3 365 1355 | **1800 107 715** (within Australia)

info@wildearth-travel.com | **wildearth-travel.com**

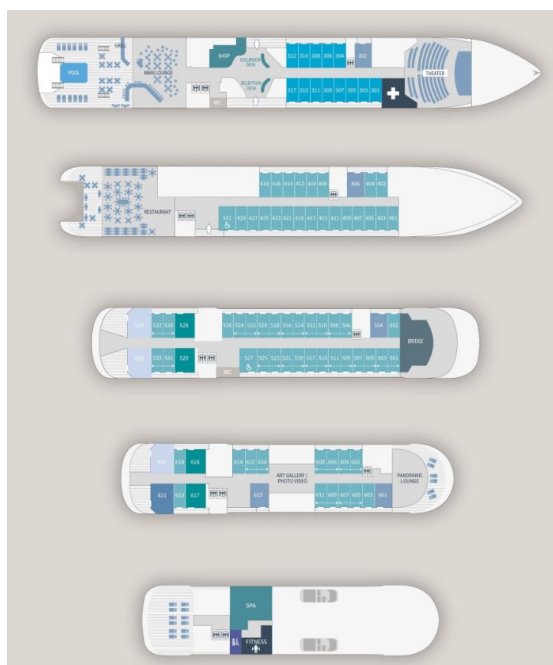




[wildearth-travel.com](http://wildearth-travel.com)

[info@wildearth-travel.com](mailto:info@wildearth-travel.com)

## INSIDE YOUR SHIP



BALCONY STATEROOM DECK 6



BALCONY STATEROOM S DECK 6



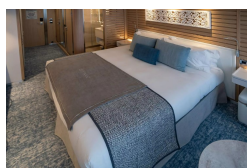
BALCONY STATEROOM S DECK 7



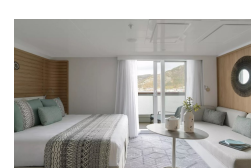
Balcony Stateroom S Deck 7



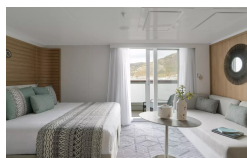
Deluxe Stateroom



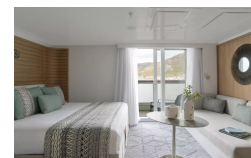
Deluxe Suite Deck 3



Deluxe Suite Deck 4



Deluxe Suite Deck 5



# Wild Earth Travel

*Small Ships, Big Adventures*

**wildearth-travel.com**

**info@wildearth-travel.com**

## PRICING

### 21-Aug-2026 to 06-Sep-2026

Deluxe Stateroom	15500 AUD pp
Prestige Deck 4	17220 AUD pp
Prestige Deck 5	18060 AUD pp
Prestige Deck 6	19080 AUD pp
Deluxe Suite Deck 5	26600 AUD pp
Deluxe Suite Deck 4	26600 AUD pp
Deluxe Suite Deck 3	26600 AUD pp
Deluxe Suite Deck 6	26600 AUD pp
Prestige Deck 5 Suite	35980 AUD pp
Prestige Deck 6 Suite	37850 AUD pp
Privilege Suite Deck 5	39730 AUD pp
Privilege Suite Deck 6	39730 AUD pp
Grand Deluxe Suite Deck 5	43650 AUD pp
Grand Deluxe Suite Deck 6	43650 AUD pp

### 29-Mar-2027 to 15-Apr-2027

PORTHOLE STATEROOM	10610 AUD pp
WINDOW STATEROOM	12280 AUD pp
BALCONY STATEROOM DECK 6	15270 AUD pp
BALCONY STATEROOM S DECK 6	15270 AUD pp
VERANDA STATEROOM	20260 AUD pp
BALCONY STATEROOM S DECK 7	21760 AUD pp
Balcony Stateroom S Deck 7	21760 AUD pp
VERANDA SUITE	27130 AUD pp
GRAND SUITE	33230 AUD pp
OWNER'S SUITE	34570 AUD pp

### ADDITIONAL CHARGES:

Port Taxes and Fees 450 AUD pp

Wild Earth Travel

*Small Ships, Big Adventures*

**0800 945 3327** (within New Zealand) | +64 (0) 3 365 1355 | **1800 107 715** (within Australia)

info@wildearth-travel.com | wildearth-travel.com



# Wild Earth Travel

*Small Ships, Big Adventures*



**wildearth-travel.com**

**info@wildearth-travel.com**

## SPECIAL OFFERS

Online prices reflect the current brochure fare savings of up to 30%. Prices may change based on demand. Terms and conditions apply. This special offer is subject to availability. Please contact us for more details.

**Wild Earth Travel**  
*Small Ships, Big Adventures*

**0800 945 3327** (within New Zealand) | +64 (0) 3 365 1355 | **1800 107 715** (within Australia)

info@wildearth-travel.com | **wildearth-travel.com**