

Wild Earth Travel

Small Ships, Big Adventures

wildearth-travel.com

info@wildearth-travel.com

ELITE 7-NIGHT CRUISE IN EASTERN & WESTERN GALAPAGOS A

Embark on an unforgettable cruise through the Galapagos Islands, where you'll encounter an array of unique wildlife and breathtaking landscapes. Your adventure includes hikes to volcanic craters and lava formations, snorkeling alongside colorful marine life, and observing endemic species like blue-footed boobies, giant tortoises, and marine iguanas in their natural habitats. Explore diverse ecosystems from the highlands of San Cristobal to the young shores of Fernandina, and engage in activities ranging from dinghy rides to serene walks through mangroves and cacti forests. Each day promises new discoveries in one of the world's most pristine and diverse archipelagos, enhancing your understanding of nature and conservation efforts in this magical corner of the earth.

For shorter, 3- or 4-night cruises, please contact us.



ITINERARY

Day 1 Saturday

****AM:** Arrive at San Cristobal airport where you will be transferred to the vessel. ******

****PM:** El Junco Lagoon ******

Walk up the rocky path surrounded by rich vegetation and wildlife to the rim of the El Junco Lagoon, an impressive crater lake located in the highlands of San Cristobal island. Here you will enjoy superb panoramic views of the island, and you can often catch frigate birds diving and bathing in the crystal clear water below.

Activities and Excursions: Walking

Wild Earth Travel

Small Ships, Big Adventures

0800 945 3327 (within New Zealand) | +64 (0) 3 365 1355 | **1800 107 715** (within Australia)

info@wildearth-travel.com | wildearth-travel.com

Wild Earth Travel

Small Ships, Big Adventures

wildearth-travel.com

info@wildearth-travel.com

Difficulty: Moderate

(-, L, D)

Day 2 Sunday

****AM: North Seymour****

North Seymour island is a small island named after Lord Hugh Seymour, a senior British Royal Navy officer. Walking amongst the low, bushy vegetation you will be able to observe a large variety of birds, including blue-footed boobies, swallow tailed gulls and a large population of frigate birds. Look out for the marvelous bright red chests of the male frigates used to attract a mate.

Activities and Excursions: Walking, Snorkeling, Dinghy ride

Difficulty: Soft

****PM: Santa Cruz Dragon Hill****

The name Dragon Hill refers to the large population of Galapagos land iguanas that have made their home here.

As you walk along the rocky coastline and through the forests of cacti and Palo Santo trees, you will no doubt encounter a number of these incredible creatures that resemble miniature dragons. The high tide also makes this a fantastic place to snorkel as the coral attracts a plethora of colorful fish close to the shoreline.

Activities and Excursions: Walking, Snorkeling

Difficulty: Moderate

(B, L, D)

Day 3 Monday

****AM: Tintoreras / Sierra Negra Volcano****

Las Tintoreras is a chain of islets off the coast of Isabela island that are characterised by dark lava formations and have created a unique habitat for a

variety of wildlife. It is therefore a fantastic site for water activities such as a dinghy ride, snorkeling, kayaking or paddle boarding and visitors are often treated to close-up sightings of turtles, sharks, penguins and sea lions. The Sierra Negra is one of the most active volcanoes in the Galapagos and has the second largest caldera in the world. As you walk up to the top of the caldera you will encounter forests of guava trees and on a clear day you will be treated to spectacular views of the other five volcanoes on the island.

Activities and Excursions: Walking

Difficulty: Moderate

****PM: Arnaldo Tupiza Breeding Center / Isabela Wetlands****

The Arnaldo Tupiza Breeding Center, where two species of giant tortoise are bred to increase the population of these incredible animals, plays an essential role in protecting the future of the Galapagos. As you walk around the centre you will also be able to enjoy the beautiful gardens that boast of a wide variety of native plants. Just outside Puerto Villamil you can also take a walk around the Isabela wetlands, comprised of lagoons, swamps and mangroves, which have become a paradise for migratory birds such as stilts and flamingos.

Activities and Excursions: Walking

Difficulty: Easy

(B, L, D)

Day 4 Tuesday

****AM: Isabela - Moreno point****

Moreno point is located on the west coast of Isabela island and although it appears a barren lava flow at first, a walk along one of the trails soon reveals a multitude of beautiful green lagoons and mangroves and is a fantastic place to see penguins, blue herons and flamingos. Meanwhile, a dinghy ride or snorkel along the rocky shoreline is a wonderful way to spot green sea turtles and white-tip sharks.

Activities and Excursions: Walking, Snorkeling, Dinghy ride

Difficulty: Moderate

Wild Earth Travel

Small Ships, Big Adventures

0800 945 3327 (within New Zealand) | +64 (0) 3 365 1355 | **1800 107 715** (within Australia)

info@wildearth-travel.com | **wildearth-travel.com**



Wild Earth Travel

Small Ships, Big Adventures

wildearth-travel.com

info@wildearth-travel.com

****PM: Isabela - Urbina Bay****

Urbina Bay is located at the foot of the Alcedo Volcano and is the result of a major volcanic uplift that took place in 1954 and resulted in 6km of coral reef being lifted out of the ocean. Walking along this new shore, you can observe the corals and remains of marine life that were stranded due to this event. However, it is now home to giant land iguanas and giant tortoises and it often a good spot to see Galapagos hawks and flightless cormorants. It is also ideal for snorkeling as turtles, rays and tropical fish frequent the coastline.

Activities and Excursions: Walking, Snorkeling

Difficulty: Moderate

(B, L, D)

Day 5 Wednesday

****AM: Fernandina - Espinosa Point****

Fernandina is the youngest island in the Galapagos and Espinosa point is a wonderful area of natural beauty. Snorkeling and swimming from the dinghy allows you see the marine iguanas feeding underwater. On the rocks you will often see large numbers of colorful Sally Lightfoot crabs. On land, the walking trails enable you to explore the fascinating mangrove plants, lava cacti and striking black lava formations where marine iguanas enjoy basking themselves in the sun.

Activities and Excursions: Walking, Snorkeling

Difficulty: Moderate

****PM: Isabela - Vicente Roca Point****

Accessible by dinghy, Vicente Roca Point on the north west coast of Isabela island is a beautiful large bay with two coves that provide nesting sites for blue-footed and Nazca boobies, gulls, storm petrels and Brown Noddy Terns. Snorkeling is also a great activity here as the cooler waters result in an abundance of food for marine life, and it is common to see groups of whales, dolphins, sea lions and marine birds gorging themselves.

Activities and Excursions: Snorkeling, Dinghy ride

Difficulty: Moderate

(B, L, D)

Day 6 Thursday

****AM: Rabida****

Rabida island is most known for its dark red sand beach surrounded by a backdrop of cliffs and steep volcanic hills full of Palo Santo trees and endemic cacti. A dinghy ride around the shoreline gives the chance to spot blue-footed and nazca boobies and water activities such as snorkeling, kayaking or paddle boarding are ideal for seeing white tipped sharks and rays. On the beach you will find a large noisy colony of sea lions and the surrounding salt brush is home to a nesting colony of pelicans. Inland, bird watchers will delight in seeing mockingbirds, yellow warblers and Darwin finches - Rabida is the only site where all nine Darwin's finches are found.

Activities and Excursions: Walking, Snorkeling, Dinghy ride, Kayak

Difficulty: Moderate

****PM: Bartholomew Island****

Bartholomew island is an islet located in Sullivan Bay and its most famous landmark is a huge volcanic cone named Pinnacle Rock. A walking trail leads up to a viewpoint at the summit of the island where you can enjoy spectacular views of Pinnacle Rock and the surrounding lava flows. The northern beach, a nesting site for green sea turtles, is perfect for snorkeling where sightings of spotted eagle rays, penguins and reef sharks are possible.

Activities and Excursions: Walking, Snorkeling, Dinghy ride

Difficulty: Easy

(B, L, D)

Day 7 Friday

****AM: San Cristobal - Kicker Rock****

Wild Earth Travel

Small Ships, Big Adventures

0800 945 3327 (within New Zealand) | +64 (0) 3 365 1355 | **1800 107 715** (within Australia)

info@wildearth-travel.com | **wildearth-travel.com**



Wild Earth Travel

Small Ships, Big Adventures

wildearth-travel.com

info@wildearth-travel.com

Kicker Rock, is an iconic feature of the Galapagos that has been formed over time by the erosion of the cone of an extinct volcano. In addition, on the rock formation itself, blue-footed boobies, frigatebirds and sea lions can often be seen perched on the ledges above which makes an excellent site to take great pictures while the vessel circumnavigate the rock formation.

Activities and Excursions: Circumnavigation

Difficulty: ----

****AM: San Cristobal - Witch Hill****

Witch Hill features an idyllic white sand beach which can be accessed by dinghy and is a superb vantage point for seeing Kicker Rock in the south of the island. The hill itself is an eroded tuff cone and the calm waters at the base of it offer a magnificent spot for snorkeling. Meanwhile, a walk along the beach or on one of the inland paths, provides opportunities to see a variety of shore birds, finches and mockingbirds.

Activities and Excursions: Walking, Snorkeling, Dinghy ride

Difficulty: Moderate

****PM: Giant Tortoises ' Reserve, off San Cristobal****

The visit to the Giant Tortoise's Reserve is the longest hike on San Cristobal; the walk is about 5 km one way and may be quite hot. This is an excellent site for observing giant tortoises in their natural habitat. San Cristobal has a population of six thousand giant tortoises; in a good day, hundreds of them can be seen along with other endemic species, such as lava lizards, and mockingbirds. Snorkel is a great activity as you have opportunities to see sea turtles and tintoreras (white tipped reef sharks). The beach of this visitor site is a nesting area for sea turtles.

Activities and Excursions: Walking, Snorkeling

Difficulty: Moderate to High Intensity

(B, L, D)

Day 8 Saturday

****AM: San Cristobal Interpretation Center****

A short distance from the center of San Cristobal is the San Cristobal Interpretation Center, which provides an overview of the fascinating history of the islands. The main areas of focus, which are addressed through a number of expositions are: natural history, human history and conservation for the future. You can also take one of the trails behind the center that lead to some great viewpoints of the ocean and volcanic rocks below.

Activities and Excursions: Walking

Difficulty: Easy

****San Cristobal Airport****

Depart from San Cristobal airport.

(B, -, -)

Please note:

Itineraries are subject to change.



Wild Earth Travel

Small Ships, Big Adventures

wildearth-travel.com

info@wildearth-travel.com

YOUR SHIP: ELITE

YOUR SHIP:	Elite
VESSEL TYPE:	Luxury Catamaran
LENGTH:	35 m
PASSENGER CAPACITY:	16
BUILT/REFURBISHED:	2019

The Galapagos Elite Luxury Catamaran began operating on June 15th, 2019. When the Elite reached the azure waters of the Galapagos Islands as the newest mega-catamaran in the storied archipelago, it reinvented luxury, class and the entire Galapagos travel experience.

A sleek, twin-hulled vessel that provides its guests with a steady and safe cruise, the design of the Elite allows for more space per guest on board, including integrated social areas that blend indoor and outdoor designs and experiences. All Suites on the Galapagos Elite luxury catamaran are spacious, comfortable, and well-appointed: the perfect place to relax and recharge after a day spent exploring the islands. Each suite has panoramic windows providing guests with sweeping ocean views, a private outdoor balcony, as well as a frosted glass wall in the restroom of each suite, bathing it in natural light. All beds are convertible, allowing them to be configured with two twin beds or one king-size bed.

Our professional cuisine specialists aboard the Galapagos Elite prepare three delicious, nutritious meals per day: breakfast and lunch are served buffet-style, with a more elegant sit-down dinner served in the al fresco dining area on the partially

covered sky deck. Special dietary needs are never a problem and kids' meals are available, including kosher food (barbers). Guests of all ages enjoy the spacious, semi-covered sky deck, the al fresco dining area, and the cozy bar-salon while aboard the Elite, and its interior passenger lounge features a 180-degree panoramic view from its main deck.

The Elite, a private luxury catamaran in the Galapagos, offers enviable itineraries with visits to the best visitor sites the Galapagos islands and Galapagos waters have to offer. Within the archipelago, we have long and short itineraries covering the Western, Central and Eastern islands.

Needless to say, the Galapagos Elite luxury catamaran features state-of-the-art navigation systems and safety equipment; safety and reliability are essential parts of any Galapagos luxury experience.



experience.



Wild Earth Travel
Small Ships, Big Adventures

0800 945 3327 (within New Zealand) | +64 (0) 3 365 1355 | **1800 107 715** (within Australia)

info@wildearth-travel.com | **wildearth-travel.com**

Wild Earth Travel

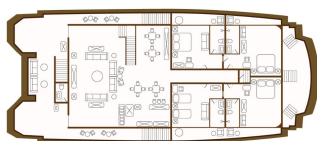
Small Ships, Big Adventures

wildearth-travel.com

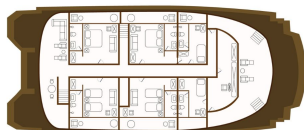
info@wildearth-travel.com

INSIDE YOUR SHIP

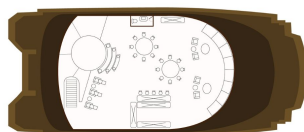
Main Deck



Upper Deck



Sky Deck



Suite



Wild Earth Travel

Small Ships, Big Adventures

0800 945 3327 (within New Zealand) | +64 (0) 3 365 1355 | 1800 107 715 (within Australia)

info@wildearth-travel.com | wildearth-travel.com

Wild Earth Travel

Small Ships, Big Adventures

wildearth-travel.com

info@wildearth-travel.com

PRICING

21-Jun-2025 to 28-Jun-2025

Suite 9990 USD pp

05-Jul-2025 to 12-Jul-2025

Suite 9990 USD pp

19-Jul-2025 to 26-Jul-2025

Suite 9990 USD pp

02-Aug-2025 to 09-Aug-2025

Suite 9990 USD pp

16-Aug-2025 to 23-Aug-2025

Suite 9990 USD pp

30-Aug-2025 to 06-Sep-2025

Suite 9990 USD pp

25-Oct-2025 to 01-Nov-2025

Suite 9990 USD pp

08-Nov-2025 to 15-Nov-2025

Suite 9990 USD pp

22-Nov-2025 to 29-Nov-2025

Suite 9990 USD pp

06-Dec-2025 to 13-Dec-2025

Suite 9990 USD pp

03-Jan-2026 to 10-Jan-2026

Suite 9990 USD pp

17-Jan-2026 to 24-Jan-2026

Suite 9990 USD pp

31-Jan-2026 to 07-Feb-2026

Suite 9990 USD pp

14-Feb-2026 to 21-Feb-2026

Suite 9990 USD pp

28-Feb-2026 to 07-Mar-2026

Suite 9990 USD pp

14-Mar-2026 to 21-Mar-2026

Suite 9990 USD pp

28-Mar-2026 to 04-Apr-2026

Suite 9990 USD pp

11-Apr-2026 to 18-Apr-2026

Suite 9990 USD pp

25-Apr-2026 to 02-May-2026

Suite 9990 USD pp

09-May-2026 to 16-May-2026

Suite 9990 USD pp

23-May-2026 to 30-May-2026

Suite 9990 USD pp

06-Jun-2026 to 13-Jun-2026

Suite 9990 USD pp

Wild Earth Travel
Small Ships, Big Adventures

0800 945 3327 (within New Zealand) | +64 (0) 3 365 1355 | **1800 107 715** (within Australia)

info@wildearth-travel.com | wildearth-travel.com

Wild Earth Travel

Small Ships, Big Adventures

wildearth-travel.com

info@wildearth-travel.com

20-Jun-2026 to 27-Jun-2026

Suite	9990 USD pp
-------	-------------

05-Dec-2026 to 12-Dec-2026

Suite	9990 USD pp
-------	-------------

04-Jul-2026 to 11-Jul-2026

Suite	9990 USD pp
-------	-------------

18-Jul-2026 to 25-Jul-2026

Suite	9990 USD pp
-------	-------------

01-Aug-2026 to 08-Aug-2026

Suite	9990 USD pp
-------	-------------

15-Aug-2026 to 22-Aug-2026

Suite	9990 USD pp
-------	-------------

29-Aug-2026 to 05-Sep-2026

Suite	9990 USD pp
-------	-------------

12-Sep-2026 to 19-Sep-2026

Suite	9990 USD pp
-------	-------------

26-Sep-2026 to 03-Oct-2026

Suite	9990 USD pp
-------	-------------

10-Oct-2026 to 17-Oct-2026

Suite	9990 USD pp
-------	-------------

24-Oct-2026 to 31-Oct-2026

Suite	9990 USD pp
-------	-------------

07-Nov-2026 to 14-Nov-2026

Suite	9990 USD pp
-------	-------------

21-Nov-2026 to 28-Nov-2026

Suite	9990 USD pp
-------	-------------

Wild Earth Travel
Small Ships, Big Adventures

0800 945 3327 (within New Zealand) | +64 (0) 3 365 1355 | **1800 107 715** (within Australia)

info@wildearth-travel.com | wildearth-travel.com