



info@wildearth-travel.com | **wildearth-travel.com**

Wild Earth Travel

Small Ships, Big Adventures

wildearth-travel.com

info@wildearth-travel.com

****Tower Island (Genovesa):**** Tower is an eroded flat volcanic island, with a natural harbor, which is actually the submerged caldera of this volcanic island.

****Darwin Bay:**** The steep cliffs of this area dominate the island. This area is home to thousands of frigate birds, red-footed boobies, Noddy terns, lava gulls, tropicbirds, doves, storm petrels and Darwin's finches.

****El Barranco:**** There is a good possibility of seeing the unique "Short eared owl" at this site. During the dinghy rides along the cliffs fur seals and several species of seabirds can be spotted.

Day 3 (Monday): Bartolome (Bartholomew) Island / Sombrero Chino (Chinese Hat)

****Sombrero Chino:**** Sombrero Chino is a small volcanic island just off the southeast tip of Santiago. The name of the island describes the shape of the island. Fauna includes Sea lions, marine iguanas and the Galapagos penguin.

****Bartolome Island:**** A hike will take you to the highest point on Bartolome for a spectacular view. Sea lions and penguins can be seen around Pinnacle Rock. There is a sandy beach with great swimming and snorkeling.

Day 4 (Thursday): Rábida Island / Santa Cruz Island

****Rábida Island:**** Rábida is a small island with a dark red coral sand beach. Highlights include the lagoon with flamingoes, pelican nesting site, sea lion bachelor colony, and a snorkeling site at the end of the beach.

****Santa Cruz Island: Dragon Hill:**** Dragon Hill is located in the northwestern side of Santa Cruz Island. Some highlights include small lagoons with flamingos, Palo Santo trees, and Opuntia cactus. As well Land Iguanas.

Day 5 (Wednesday): Santa Cruz Island

****Highlands of Santa Cruz:**** Galapagos giant tortoises can be seen in the wild in the highlands of Santa Cruz

****Charles Darwin Station:**** Visit the Charles Darwin Station is a research facility and National Park Information center. The Charles Darwin Station has a giant tortoise and land iguana breeding program and interpretation center.

Day 6 (Thursday): Española (Hood) Island

****Hood Island (Española):**** Hood is the oldest of the Southern Islands and is the southernmost in the archipelago. Because of its remote location a unique range of endemic species evolved here

****Punta Suarez:**** The wildlife at Punta Suarez is plentiful and varied. Along the cliff visitors can enjoy the blowhole where seawater is forced about 20m into the air. The highlights are the Waved albatross (April-Dec) that are only found on Hood, Galapagos Hawks, blue-footed boobies, Nazca boobies, and Española lava lizards.

****Gardner Bay:**** Located on the northeast of the island, the site has a long and beautiful white sand beach inhabited by sea lion colonies.

****Islote Gardner and Islote Osborn:**** These islets are snorkeling sites where visitors will see an abundance of tropical fish, reef sharks, and turtles.

Day 7 (Friday): Santa Fe Island / South Plazas Island

****Santa Fe Island:**** Santa Fe is a smaller island of 24 km². The visitor site Santa Fe is located on the northeast end of the island. Highlights include Santa Fe land iguanas, pelican nesting site, sea lion colony, mockingbird, and Palo Santo trees.

****South Plaza Island:**** Plazas consists of two very small islands that were uplifted from the sea, separated by a channel. Only South Plazas has a visitor

Wild Earth Travel

Small Ships, Big Adventures

0800 945 3327 (within New Zealand) | +64 (0) 3 365 1355 | **1800 107 715** (within Australia)

info@wildearth-travel.com | **wildearth-travel.com**



Wild Earth Travel

Small Ships, Big Adventures

wildearth-travel.com

info@wildearth-travel.com

site. The highlights include tall Opuntia cactus, land and marine iguanas, rocky cliff that looks out towards open ocean which is also a nesting site for red-billed tropic birds and gulls, and a seal lion bachelor colony.

Day 8 (Saturday): Santa Cruz Island / Baltra for return flight to Quito

****Los Gemelos:**** Surrounded by the endemic Scaevola trees, these two sunken craters are known as the twins. They are naturally beautiful and home to yellow warblers and finches.

Baltra Island

Return flight to Quito

Please Note:

Itineraries are subject to change.

Wild Earth Travel

Small Ships, Big Adventures

0800 945 3327 (within New Zealand) | +64 (0) 3 365 1355 | **1800 107 715** (within Australia)

info@wildearth-travel.com | **wildearth-travel.com**

Wild Earth Travel

Small Ships, Big Adventures

wildearth-travel.com

info@wildearth-travel.com

YOUR SHIP: PASSION

YOUR SHIP:	Passion
VESSEL TYPE:	Luxury Yacht
LENGTH:	159 feet / 48.5 meters
PASSENGER CAPACITY:	12 (6 cabins)
BUILT/REFURBISHED:	1973/2014

air-conditioned and incredibly spacious.

Originally built as a private luxury yacht, the M/Y Passion has been completely refurbished while still retaining many of its original elegant features such as its rose colored marble bathrooms and teak wood decks that make the vessel one of a kind.

The M/Y Passion, originally named Bellissima (beautiful in Italian) has never been used for tourism before.

This exclusive vessel has ample social areas, a panoramic sky lounge and bar, separate dining room, wonderfully spacious sun decks for al fresco dining and a secluded sun deck with jacuzzi for relaxation and privacy.

Measuring 159 feet (48.5 meters), she stands four decks and boasts an exceptional amount of space for its only 12 passengers.

The ratio of one staff member per guest ensures first class service and the finest gourmet cuisine is served throughout the cruise.

Each of the six ample state cabins has its own private bathroom with bathtub. The VIP and Master suites feature two en-suite bathrooms.

All four staterooms and two suites on board are fully



Wild Earth Travel

Small Ships, Big Adventures

0800 945 3327 (within New Zealand) | +64 (0) 3 365 1355 | **1800 107 715** (within Australia)

info@wildearth-travel.com | **wildearth-travel.com**

Wild Earth Travel

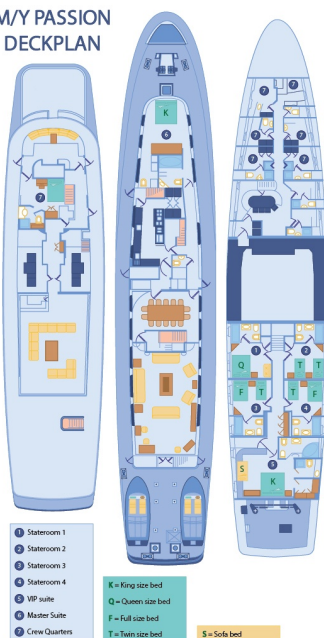
Small Ships, Big Adventures

wildearth-travel.com

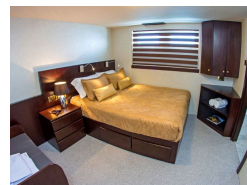
info@wildearth-travel.com

INSIDE YOUR SHIP

M/Y PASSION
DECKPLAN



Cabin. From



Wild Earth Travel

Small Ships, Big Adventures

0800 945 3327 (within New Zealand) | +64 (0) 3 365 1355 | 1800 107 715 (within Australia)

info@wildearth-travel.com | wildearth-travel.com



Wild Earth Travel

Small Ships, Big Adventures

wildearth-travel.com

info@wildearth-travel.com

PRICING

31-May-2025 to 07-Jun-2025

Cabin. From	8000 USD pp
-------------	-------------

14-Jun-2025 to 21-Jun-2025

Cabin. From	8000 USD pp
-------------	-------------

26-Jul-2025 to 02-Aug-2025

Cabin. From	8000 USD pp
-------------	-------------

09-Aug-2025 to 16-Aug-2025

Cabin. From	8000 USD pp
-------------	-------------

23-Aug-2025 to 30-Aug-2025

Cabin. From	8000 USD pp
-------------	-------------

20-Sep-2025 to 27-Sep-2025

Cabin. From	8000 USD pp
-------------	-------------

04-Oct-2025 to 11-Oct-2025

Cabin. From	8000 USD pp
-------------	-------------

18-Oct-2025 to 25-Oct-2025

Cabin. From	8000 USD pp
-------------	-------------

15-Nov-2025 to 22-Nov-2025

Cabin. From	8000 USD pp
-------------	-------------

29-Nov-2025 to 06-Dec-2025

Cabin. From	8000 USD pp
-------------	-------------

13-Dec-2025 to 20-Dec-2025

Cabin. From	8000 USD pp
-------------	-------------

24-Jan-2026 to 31-Jan-2026

Cabin. From	8000 USD pp
-------------	-------------

ADDITIONAL CHARGES:

**Galapagos National Park entrance
fee. From 220 USD pp**



Wild Earth Travel
Small Ships, Big Adventures

0800 945 3327 (within New Zealand) | +64 (0) 3 365 1355 | **1800 107 715** (within Australia)

info@wildearth-travel.com | **wildearth-travel.com**