

Wild Earth Travel

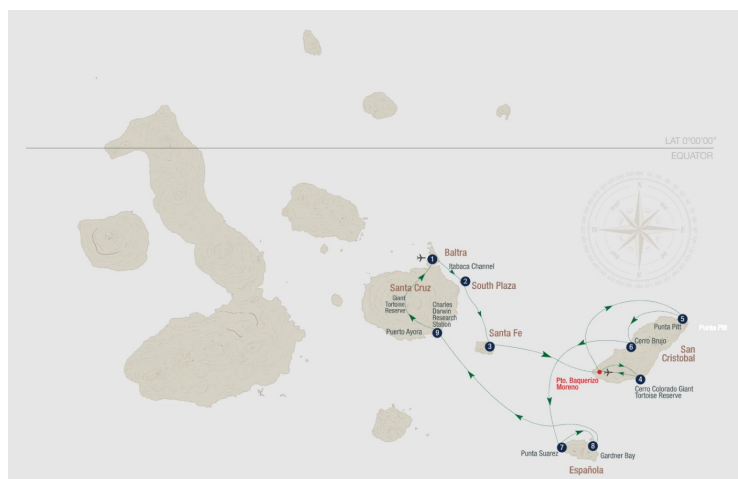
Small Ships, Big Adventures

wildearth-travel.com

info@wildearth-travel.com

HUMBOLDT ISLES EXPEDITION - SOUTH-EASTERN GALAPAGOS ADVENTURE

We're delighted to have you on board for this journey of discovery to some of the most beautiful islands in the Galapagos. Our itinerary together begins on Baltra Island, a former military base during World War II, and now an Ecuadorian naval and air force station. Once all formalities are completed, we venture east along the volcanic shores of North Seymour and Santa Cruz Islands, until we reach the Plazas Islands. Our adventures start with a dry landing at a manmade jetty on South Plaza Island. During the next day, we will explore Santa Fe Island and San Cristobal Island, home to the provincial capital of the Galapagos province. Then, we sail south to Española Island, with its remarkable visitor site (a favourite of many visitors): Punta Suarez. Here, we'll wander along the rugged coastline, home to hundreds of marine iguanas, sea lions, marine birds, and even albatross (during much of the year). In the afternoon, Gardner Bay provides a wonderful setting for a combination of beach-time, swimming, snorkelling or exploring aboard the glass-bottom boat. We end on Monday with a visit to the world-famous Charles Darwin Research Station on Santa Cruz Island, the most populous in the archipelago. Wherever we sail, whatever we do, the entire crew aboard La Pinta will do our utmost to ensure your Galapagos experience is truly deeply moving and memorable.



ITINERARY

Day 1 – Baltra Airport & South Plaza Island

Baltra Airport Our adventure begins with a morning flight to Baltra Island and immediate transfer to the dock to board Yacht La Pinta. There's a welcome introductory briefing, boat drill, cabin assignment and then lunch. We weigh anchor and start sailing for our first afternoon outing. **South Plaza Island** The turquoise waters of the channel here contrast brilliantly with the white sand and black lava of the shoreline, while a carpet of scarlet sesuvium succulents serves as groundcover for a grove of luminescent green prickly-pear cactus beyond, populated by yellow-grey land iguanas. Along the coastline one finds sea lion colonies, while sea birds play with the thermals that form along the cliffs of this small but spectacular island.

Day 2 – Santa Fe Island & Cerro Colorado Tortoise Habitat

Santa Fe Island We take the dinghy over to this idyllic sandy-white beach populated by colonies of sea lions. Galapagos hawks are often easily observed, perched atop salt bushes. The Santa Fe land iguana, unique to just

Wild Earth Travel

Small Ships, Big Adventures

0800 945 3327 (within New Zealand) | +64 (0) 3 365 1355 | **1800 107 715** (within Australia)

info@wildearth-travel.com | wildearth-travel.com



Wild Earth Travel

Small Ships, Big Adventures

wildearth-travel.com

info@wildearth-travel.com

this island, may be spotted during the walk. Following the walk, we can snorkel and swim along a natural wave barrier or ride the glass-bottom boat. Cerro Colorado Tortoise Habitat. After lunch, we disembark at Puerto Baquerizo Moreno, the island's capital, and drive 40 minutes to the island's southern shore. At Cerro Colorado, we visit the breeding centre for highly endangered giant tortoises in the midst of a fantastic deciduous forest, home to dozens of bird species, including the San Cristobal mockingbird, and the San Cristobal lava lizard, both island endemics.

Day 3 - Punta Pitt (San Cristobal Island) & Cerro Brujo

Punta Pitt (San Cristobal Island) We land at the eastern tip of San Cristobal Island this morning. The trail that ascends from the beach provides spectacular views of the shoreline; we can observe frigates, plus a colony of bachelor sea lions. After the walk, if conditions are favourable, there is a chance to swim from the beach and snorkel. Cerro Brujo In the afternoon following lunch on board, a dinghy ride along the shores of tuff-stone layers takes us to Cerro Brujo's expansive, white coral beach, great for walking, with rewarding bird-watching featuring seabirds and shore birds. Also, look out for Galapagos sea lions. These are the same shores that Charles Darwin walked upon, back in September 1835.

Day 4 - Punta Suarez & Gardner Bay

Punta Suarez Our morning outing at Punta Suarez provides an exciting walk on lava/boulder terrain to visit its unique sea bird colonies, including the Galapagos albatross (April - January), boobies, swallow-tail gulls, and the famous "blowhole" lava formation. Also, look for red-green-black marine iguanas. Many regard this site as the best in the Galapagos. Back on board for lunch. Gardner Bay In the afternoon, we set down at this beautiful, white coral beach for a short walk to observe the sea lions, mockingbirds, finches, or enjoy the beach. There is great snorkelling in this area, or else there's time to kayak or ride the glass-bottom boat.

Day 5 - Charles Darwin Research Station (Santa Cruz Island)/ Baltra Airport

Charles Darwin Research Station (Santa Cruz Island)/ Baltra Airport Disembarking in the morning, we visit the Charles Darwin Research Station and the captive rearing programme for the giant tortoises. Here we witness the

efforts and results of Galapagos fieldwork and study done in the name of science. We transfer via bus across Santa Cruz Island and a short ferry ride to Baltra. Our journey ends at Baltra Island, where we transfer to the airport to take the flight back to the mainland. Baltra's flat substrate (due to its uplifted origin) is the reason why the island was chosen back in the 1940s as the construction site for an airport.

Please Note:

Please remember that the exact route and programme may vary according to weather and ocean conditions and the wildlife we encounter. It's also subject to change without previous notice due mainly to readjustment of National Park policies and regulations.

Wild Earth Travel

Small Ships, Big Adventures

0800 945 3327 (within New Zealand) | +64 (0) 3 365 1355 | **1800 107 715** (within Australia)

info@wildearth-travel.com | wildearth-travel.com

Wild Earth Travel

Small Ships, Big Adventures

wildearth-travel.com

info@wildearth-travel.com

YOUR SHIP: LA PINTA

YOUR SHIP:	La Pinta
VESSEL TYPE:	Small Ship
LENGTH:	63 metres
PASSENGER CAPACITY:	48 (in 24 cabins)
BUILT/REFURBISHED:	1983 / 2007 / 2020

The elegant, recently renovated La Pinta reflects the combined dreams shared by captains, crew, guides, and guests over the years. This beautiful 48-guest yacht features spacious cabins with floor-to-ceiling windows and sophisticated yet relaxed decks and lounges.

In one of the world's greatest marine environments, you can be sure your surroundings are front and center. From bow to stern, the elegant and sophisticated La Pinta recently received a full interior makeover and would steal the show anywhere less impressive. Instead, she's the perfect complement to the great outdoors. Floor-to-ceiling windows in the lounge showcase the views with a decor that nods to the nautical. Geared up for adventure play and wildlife, the yacht also has a fun-to-explore expedition room lined with maps and artwork, a canopied terrace, and an alfresco dining area. Her Ecuadorian crew exudes friendliness, fueled by pride in their vessel, the Galapagos Islands, and a desire to share them both. Because some good things are too good to keep secret.

Ship Amenities

Onboard Features include three public decks, on-deck hot tub, exercise room with fitness equipment, expedition room along

with an outdoor sky bar and observation lounge.

The lounge features floor to ceiling windows, the library features historical materials, and the aft covered alfresco dining area also features the hot tub and bar. Perfection.

The Dining Room features open seating. Meals are served at table at set times. Unlimited beverages, alcoholic and non, are included in the price of the cruise. Vegetarian options are always available. Dietary restrictions are happily accommodated with advance notice.

Cabin Features: Floor-to-ceiling view windows; air conditioning; universal docking station; hairdryer, conditioning shampoo, body wash; in-room safe deposit box



deposit box

Wild Earth Travel

Small Ships, Big Adventures

0800 945 3327 (within New Zealand) | +64 (0) 3 365 1355 | **1800 107 715** (within Australia)

info@wildearth-travel.com | **wildearth-travel.com**

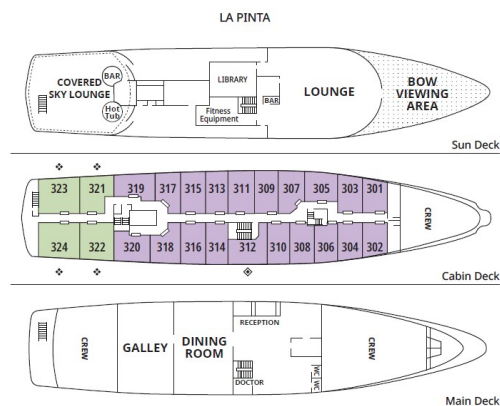
Wild Earth Travel

Small Ships, Big Adventures

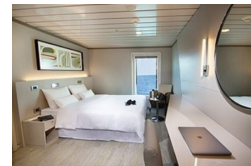
wildearth-travel.com

info@wildearth-travel.com

INSIDE YOUR SHIP



Luxury Cabin/Captain Cabin



Wild Earth Travel

Small Ships, Big Adventures

0800 945 3327 (within New Zealand) | +64 (0) 3 365 1355 | 1800 107 715 (within Australia)

info@wildearth-travel.com | wildearth-travel.com

Wild Earth Travel

Small Ships, Big Adventures

wildearth-travel.com

info@wildearth-travel.com

PRICING

10-Jul-2025 to 14-Jul-2025

Luxury Cabin/Captain Cabin 5870 USD pp

More Cabin Categories Available 0 pp

24-Jul-2025 to 28-Jul-2025

Luxury Cabin/Captain Cabin 5870 USD pp

More Cabin Categories Available 0 pp

07-Aug-2025 to 11-Aug-2025

Luxury Cabin/Captain Cabin 5870 USD pp

More Cabin Categories Available 0 pp

21-Aug-2025 to 25-Aug-2025

Luxury Cabin/Captain Cabin 5870 USD pp

More Cabin Categories Available 0 pp

04-Sep-2025 to 08-Sep-2025

Luxury Cabin/Captain Cabin 5870 USD pp

More Cabin Categories Available 0 pp

18-Sep-2025 to 22-Sep-2025

Luxury Cabin/Captain Cabin 5870 USD pp

More Cabin Categories Available 0 pp

02-Oct-2025 to 06-Oct-2025

Luxury Cabin/Captain Cabin 5870 USD pp

More Cabin Categories Available 0 pp

16-Oct-2025 to 20-Oct-2025

Luxury Cabin/Captain Cabin 5870 USD pp

More Cabin Categories Available 0 pp

30-Oct-2025 to 03-Nov-2025

Luxury Cabin/Captain Cabin 5870 USD pp

More Cabin Categories Available 0 pp

13-Nov-2025 to 17-Nov-2025

Luxury Cabin/Captain Cabin 5870 USD pp

More Cabin Categories Available 0 pp

27-Nov-2025 to 01-Dec-2025

Luxury Cabin/Captain Cabin 5870 USD pp

More Cabin Categories Available 0 pp

11-Dec-2025 to 15-Dec-2025

Luxury Cabin/Captain Cabin 5870 USD pp

More Cabin Categories Available 0 pp

25-Dec-2025 to 29-Dec-2025

Luxury Cabin/Captain Cabin 5870 USD pp

More Cabin Categories Available 0 pp

08-Jan-2026 to 12-Jan-2026

Luxury Cabin/Captain Cabin 5987 USD pp

More Cabin Categories Available 0 pp

05-Feb-2026 to 09-Feb-2026

Luxury Cabin/Captain Cabin 5987 USD pp

More Cabin Categories Available 0 pp



Wild Earth Travel

Small Ships, Big Adventures

wildearth-travel.com

info@wildearth-travel.com

19-Feb-2026 to 23-Feb-2026

Luxury Cabin/Captain Cabin 5987 USD pp

More Cabin Categories Available 0 pp

05-Mar-2026 to 09-Mar-2026

Luxury Cabin/Captain Cabin 5987 USD pp

More Cabin Categories Available 0 pp

19-Mar-2026 to 23-Mar-2026

Luxury Cabin/Captain Cabin 5987 USD pp

More Cabin Categories Available 0 pp

Wild Earth Travel

Small Ships, Big Adventures

0800 945 3327 (within New Zealand) | +64 (0) 3 365 1355 | **1800 107 715** (within Australia)

info@wildearth-travel.com | **wildearth-travel.com**

Wild Earth Travel

Small Ships, Big Adventures

wildearth-travel.com

info@wildearth-travel.com

PRICING

02-Apr-2026 to 06-Apr-2026

Luxury Cabin/Captain Cabin 5987 USD pp

More Cabin Categories Available 0 pp

16-Apr-2026 to 20-Apr-2026

Luxury Cabin/Captain Cabin 5987 USD pp

More Cabin Categories Available 0 pp

30-Apr-2026 to 04-May-2026

Luxury Cabin/Captain Cabin 5987 USD pp

More Cabin Categories Available 0 pp

14-May-2026 to 18-May-2026

Luxury Cabin/Captain Cabin 5987 USD pp

More Cabin Categories Available 0 pp

28-May-2026 to 01-Jun-2026

Luxury Cabin/Captain Cabin 5987 USD pp

More Cabin Categories Available 0 pp

11-Jun-2026 to 15-Jun-2026

Luxury Cabin/Captain Cabin 5987 USD pp

More Cabin Categories Available 0 pp

25-Jun-2026 to 29-Jun-2026

Luxury Cabin/Captain Cabin 5987 USD pp

More Cabin Categories Available 0 pp

09-Jul-2026 to 13-Jul-2026

Luxury Cabin/Captain Cabin 5987 USD pp

More Cabin Categories Available 0 pp

23-Jul-2026 to 27-Jul-2026

Luxury Cabin/Captain Cabin 5987 USD pp

More Cabin Categories Available 0 pp

06-Aug-2026 to 10-Aug-2026

Luxury Cabin/Captain Cabin 5987 USD pp

More Cabin Categories Available 0 pp

20-Aug-2026 to 24-Aug-2026

Luxury Cabin/Captain Cabin 5987 USD pp

More Cabin Categories Available 0 pp

03-Sep-2026 to 07-Sep-2026

Luxury Cabin/Captain Cabin 5987 USD pp

More Cabin Categories Available 0 pp

17-Sep-2026 to 21-Sep-2026

Luxury Cabin/Captain Cabin 5987 USD pp

More Cabin Categories Available 0 pp

01-Oct-2026 to 05-Oct-2026

Luxury Cabin/Captain Cabin 5987 USD pp

More Cabin Categories Available 0 pp

12-Nov-2026 to 16-Nov-2026

Luxury Cabin/Captain Cabin 5987 USD pp

More Cabin Categories Available 0 pp

Wild Earth Travel

Small Ships, Big Adventures

0800 945 3327 (within New Zealand) | +64 (0) 3 365 1355 | **1800 107 715** (within Australia)

info@wildearth-travel.com | wildearth-travel.com



Wild Earth Travel

Small Ships, Big Adventures

wildearth-travel.com

info@wildearth-travel.com

26-Nov-2026 to 30-Nov-2026

Luxury Cabin/Captain Cabin 5987 USD pp

More Cabin Categories Available 0 pp

10-Dec-2026 to 14-Dec-2026

Luxury Cabin/Captain Cabin 5987 USD pp

More Cabin Categories Available 0 pp

24-Dec-2026 to 28-Dec-2026

Luxury Cabin/Captain Cabin 5987 USD pp

More Cabin Categories Available 0 pp

**Galapagos National Park
admission fee and transit Control
Card for Galapagos 220 USD pp**

ADDITIONAL CHARGES:

Wild Earth Travel
Small Ships, Big Adventures

0800 945 3327 (within New Zealand) | +64 (0) 3 365 1355 | **1800 107 715** (within Australia)

info@wildearth-travel.com | **wildearth-travel.com**