



Wild Earth Travel

Small Ships, Big Adventures

wildearth-travel.com

info@wildearth-travel.com

EAST SPITSBERGEN - HOME OF THE POLAR BEAR, INCLUDING LONG HIKES & CLEANING THE SHORES

Experience the high Arctic summer solstice with an expedition that visits some of the top sites of eastern Spitsbergen. Our goal is to take you to amazing glaciers, fascinating historical sites, bountiful seabird colonies, and sprawling fjord systems in which there is a good chance of spotting whales, seals, and possibly even polar bears.

Long hikes are for groups of 24 passengers maximum, accompanied by two armed expedition staff and a Zodiac that will sail ahead to watch for polar bears along the shoreline. Passengers who join this activity should have the willingness and ability to walk at least 15 km (9 miles) in semi-rough terrain that includes shorelines, tundra, low hills, and river crossings. Walks will take around six hours from start to finish, rest times included. We will walk at a modest pace and not cross any alpine terrain. Passengers who do not take part in long walks will have a landing in the morning at the start point of the walk, then sail to the end point of the walk for their second landing in the afternoon.

Interested in doing something good for the environment?

We welcome you to participate in our ongoing effort to remove plastic waste and other rubbish from the shores of Spitsbergen.

Garbage from the ocean, such as fishing gear and plastic litter, piles up on these shores. This litter is hazardous to the animals, which get entangled in fish nets and sometimes ingest micro-plastics that can lead to starvation and suffocation.

Wild Earth Travel
Small Ships, Big Adventures

0800 945 3327 (within New Zealand) | +64 (0) 3 365 1355 | **1800 107 715** (within Australia)

info@wildearth-travel.com | **wildearth-travel.com**



Wild Earth Travel

Small Ships, Big Adventures

wildearth-travel.com

info@wildearth-travel.com

Supported by AECO and the governor of Spitsbergen, we enjoy cleaning the beaches of Svalbard with our passengers. All participants will be assisted by our guides and provided with collection bags. About 50 passengers will clean in the morning while the other 50 have their excursion in another area. Then in the afternoon, the groups switch roles. And if we cannot clean a certain area because of roaming bears or other concerns, we will find an alternate area.



mate area.

ITINERARY

Day 2: Spectacular Hornsund

We start the day by quietly cruising the side fjords of the spectacular Hornsund



Wild Earth Travel

Small Ships, Big Adventures

wildearth-travel.com

info@wildearth-travel.com

area in southern Spitsbergen, enjoying the scenery of towering mountain peaks. The mountain of Hornsundtind rises to 1,431 meters (4,695 feet), while the peak of Bautaen testifies to why early Dutch explorers gave this island the name Spitsbergen, meaning "pointed mountains."

There are 14 magnificent glaciers in the area, and we have a fair chance of encountering seals and polar bears.

The nearby cliffs of Sofiakammen are also home to thousands of pairs of nesting kittiwakes and little auks, and in the evening, we might see thousands of harp seals rutting on ice floes at Sørkapp.

Long hike - If conditions permit, we land at Treskelodden, then walk from Treskelen to Adriabukta. From there we walk west to Hymeodden and north to the glacier in Wibewika (about 16 km / 10 miles), where we will be picked up. The other guests will have their program in Brepollen (morning) and Luciakammen or Sofiakammen (afternoon). We might also do this program in reverse.

Day 3: Long excursion at Diskobukta

After navigating the drift ice of Storfjorden, where we sometimes see harp seals, we land in northwest Edgeøya at the northern bank of Rosenberdalriver. Here on the raised beach, we have the opportunity of walking to Rosenbergdalen, which is teeming with grazing reindeer.

Afterward we plan to walk by a cliff with nesting black guillemots on our way to Strehamna, where we often find a herd of walrus on the beach near an octagonal trapper's cabin built in 1905.

We can also see the remains of a 19th-century Pomor house as well as the bones of walrus hunted in previous centuries.

Long hike - If conditions permit, we land at Blankoddden, near a large kittiwake colony in a beautiful canyon, then walk north along the coast to Kapp Lee (about 20 km / 12.4 miles) or to the south side of Rosenbergdalen (about 17 km / 10.6 miles), where we will be picked up. We might also do this program in reverse.

If this long hike is not possible, we might offer an alternative hike on day 4.

Day 4: Trapper's history in Freemansundet

Sailing into the waterway of Freemansundet, we plan to land at the tundra lowland of Sundneset, on the island of Barentsøya.

Here we will visit the hut of a German scientific expedition (Wurzbugerhutte) from sixty years ago, then take a brisk walk across the tundra in search of Spitsbergen reindeer and barnacle geese. After that, we plan to go on a Zodiac cruise near Freeman Glacier and visit a kittiwake colony in a canyon close by.

In case of heavy ice in Freemansundet, however, we will instead sail to Negribreen, one of the most extensive glacier fronts on the east side of Spitsbergen. Here we can take a Zodiac cruise and land on Walrus Island, which became ice-free at the end of last century.

Long hike - If conditions permit, we land in Barentsøya, near small lakes with wildfowl and waders, then walk east along the coast of Barentsøya to Freemanbreen. After about 10 km (6.2 miles), we will pass a colony of kittiwakes. After another 10 km walk, we will be picked up at the west side of Freemanbreen. This is a good area to spot polar bears. We might also do this program in reverse.

Day 5: Ivory gulls in Agardhfjellet

Today we sail to the east side of west Spitsbergen (west side of Storfjorden).

Here we plan to walk to breeding places for ivory gulls in Agardhfjellet, which stands about 300 meters (980 feet) high.

The valley leading to the outcrops that house the nests is littered with fossils of belemnites and ammonites.

Day 6: South Spitsbergen

Today we aim to land at the mountain of Stellingfjellet, near the largest colony of Brunnich's guillemots in Spitsbergen. Later in the day, we will make landings at the rarely visited coast of south Spitsbergen, at the bay of Isbukta.

Day 7: Bell Sund's flora, fauna, and haunting history

Wild Earth Travel
Small Ships, Big Adventures

0800 945 3327 (within New Zealand) | +64 (0) 3 365 1355 | **1800 107 715** (within Australia)

info@wildearth-travel.com | wildearth-travel.com



We continue our voyage in Bell Sund, one of the largest fjord systems in Svalbard. The ocean currents make this area slightly warmer than other areas in the archipelago, which shows in the relatively lush vegetation.

Here there are excellent opportunities to enjoy both history and wildlife.

A possibility is Ahlstrandhalvøya, at the mouth of Van Keulenfjorden, where piles of beluga skeletons can be found. These remains of 19th-century whale slaughter are a haunting reminder of the consequences of rampant exploitation. Fortunately, belugas were not hunted into extinction, and you have a good chance of coming across a pod.

Alternately, while cruising the side fjords of Bellsund, we can explore tundra where reindeer like to feed as well as rock slopes where little auks are breeding.

Long hike - If conditions permit, we land at Recherchelagune and walk along the eastern shore of Recherchefjord, by Laegemeset (17th century whaling station). Our goal is to reach Ahlstrandhalvøya, and from there to Ingebrigtisenbukta. If need be, our Zodiacs can help us at the mouth of the river. We might also do this hike in reverse or land at Ingeborgfjellet, then walk along the coast to the west side of van Muydenbukta, along a shore with many whale skeletons.

Day 8: There and back again

Every adventure, no matter how grand, must eventually come to an end. You disembark in Longyearbyen, taking home memories that will accompany you wherever your next adventure lies.

Please note:

All itineraries are for guidance only. Programs may vary depending on ice, weather, and wildlife conditions. Landings are subject to site availabilities, permissions, and environmental concerns per AECO regulations. Official sailing plans and landing slots are scheduled with AECO prior to the start of the season, but the expedition leader determines the final plan. Flexibility is paramount for expedition cruises. The average cruising speed of our vessel is 10.5 knots.



Wild Earth Travel

Small Ships, Big Adventures

wildearth-travel.com

info@wildearth-travel.com

YOUR SHIP: ORTELIUS

YOUR SHIP:	Ortelius
VESSEL TYPE:	Expedition
LENGTH:	91m
PASSENGER CAPACITY:	108-123
BUILT/REFURBISHED:	

Built / Refurbished : 1989 / 2015

Ortelius was originally the Marina Svetaeva. Built in Gdynia, Poland in 1989, it served as a special-purpose vessel for the Russian Academy of Science. Later it was re-flagged and renamed after the Dutch/Flemish cartographer Abraham Ortelius (1527 - 1598), who in 1570 published the first modern world atlas: Theatrum Orbis Terrarum or Theater of the World. At that time his atlas was the most expensive book ever printed. Ortelius is classed by Lloyd's Register in London and flies the Dutch flag.

Perfect for Any Expedition

The vessel has the highest ice-class notation (UL1, equivalent to 1A) and is therefore suitable to navigate in solid one-year sea ice as well as loose multi-year pack ice. Ortelius can accommodate up to 108 passengers and has an abundance of open-deck spaces. It is manned by 24 highly experienced nautical crew members, 20 hotel staff, eight expedition specialists (one expedition leader, one assistant, and six lecturer-guides), and one doctor.

Ortelius: a Vessel with Comfort and Character

Please be aware that a small number of cabins may have a

partially obstructed view due to the size of the windows and the design requirements of the ship. For example, some windows may be partly obstructed in the lower half by a gangway. The best view is always on the outer deck or the bridge. Though our voyages are primarily meant to offer our passengers an exploratory wildlife program with as much time ashore as possible, Ortelius offers all the comforts of a standard hotel along with a bar and lecture room. Flexibility assures maximum wildlife opportunities. As such, Ortelius carries 10 Zodiacs with 60hp Yamaha engines.

Age & Nationality

Passengers on a typical voyage range from in their 30s to their 80s, with the majority usually between 45 - 65. Our expeditions attract independent travelers from around the globe who are characterized by a strong interest in exploring remote regions. The camaraderie that develops on board is an important part of the Oceanwide experience, and many passenger groups include several nationalities.

What to Wear

In keeping with the spirit of expedition, dress on board is informal. Bring casual and comfortable clothing for all activities, and keep in mind that much of the scenery can be appreciated from deck which can be slippery. Bring sturdy shoes with no-slip soles, and make sure your parka is never far away in case one of our crew shouts "Whales!" over the loudspeaker and you have to dash outside in a moment's notice. Opt for layers, as it is comfortably warm aboard the ship though often cold on deck.

How to Pay

Wild Earth Travel
Small Ships, Big Adventures

0800 945 3327 (within New Zealand) | +64 (0) 3 365 1355 | **1800 107 715** (within Australia)

info@wildearth-travel.com | **wildearth-travel.com**

Wild Earth Travel

Small Ships, Big Adventures

wildearth-travel.com

info@wildearth-travel.com

Refreshments and souvenirs will be charged to your cabin. The day before departure you can settle your bill with the hotel manager, paying by credit card (Visa or MasterCard) or cash (euro, or in some cases dollar). We cannot, however, accept checks. Though the prices and standard currency on board is in the euro, other currencies may be accepted at the discretion of the hotel manager, at prevailing rates.

Electric Current

The electrical supply aboard ship is 220v, 60Hz. Electrical outlets are standard European with two thick round pins, so some passengers may need a 220v/110v converter.

Gratuities

The customary gratuity to the ship's service personnel is made as a blanket contribution at the end of the voyage and is divided among the crew. Tipping is a personal matter, and the amount you wish to give is at your sole discretion. As a generally accepted guideline, we suggest 8 – 10 euros per passenger per day. It is better for the crew if you give cash.

Non-Smoking Policy

We have a non-smoking policy inside all our vessels, though you can smoke in certain designated areas. We ask that you please respect the wishes of non-smokers.

Your Physical Condition

You must be in good overall health and be able to walk several hours per day. The expedition is ship-based and physically not very demanding, but we spend as much time as possible on shore. You are, however, welcome to remain aboard the ship if you prefer. To join most excursions you must be able to get up and down the steep gangway from the ship to the water level to board the Zodiacs. Staff will assist you in and out of the boats, and boarding will become progressively easier with

practice, but conditions on shore can be slippery and rocky. Remember, you will be traveling in remote areas without access to sophisticated medical facilities, so you must not join this expedition if you have a life-threatening condition or need daily medical treatment.



treatment.

Wild Earth Travel

Small Ships, Big Adventures

0800 945 3327 (within New Zealand) | +64 (0) 3 365 1355 | **1800 107 715** (within Australia)

info@wildearth-travel.com | **wildearth-travel.com**

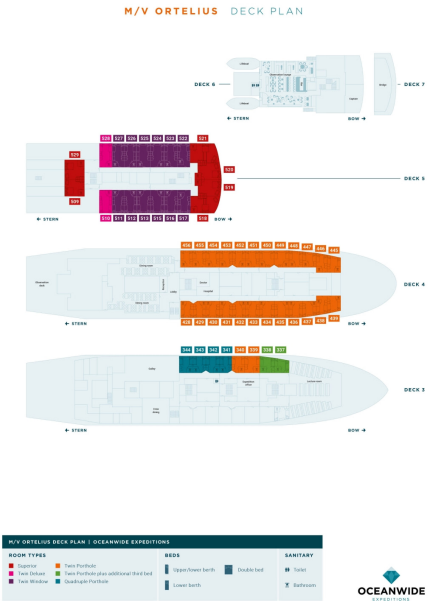


Wild Earth Travel
Small Ships, Big Adventures

wildearth-travel.com

info@wildearth-travel.com

INSIDE YOUR SHIP



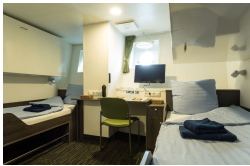
Quadruple Porthole



Superior



Triple Porthole



Twin Deluxe



Twin Porthole



Twin Window





Wild Earth Travel

Small Ships, Big Adventures

wildearth-travel.com

info@wildearth-travel.com

PRICING

26-Jun-2026 to 03-Jul-2026

Quadruple Porthole	4450 USD pp
Triple Porthole	5550 USD pp
Twin Porthole	6150 USD pp
Twin Window	6700 USD pp
Twin Deluxe	7100 USD pp
Superior	8050 USD pp

Wild Earth Travel
Small Ships, Big Adventures

0800 945 3327 (within New Zealand) | +64 (0) 3 365 1355 | **1800 107 715** (within Australia)

info@wildearth-travel.com | **wildearth-travel.com**