

Wild Earth Travel

Small Ships, Big Adventures

wildearth-travel.com

info@wildearth-travel.com

DUBROVNIK TO VENICE IN LUXURY

Explore unusual and less visited towns and harbours as well as the great cities of the Adriatic; charming fishermen's villages, unique National Parks, picturesque coves for swimming, and bustling port towns while sampling local Mediterranean cuisine. Our vessel carries a maximum of just 40 people but at 48 metres long she is one of the largest vessels allowed into many of the small ports and harbours along this coastline. We will stop for a swim somewhere en route every day and on most evenings we are free to explore the restaurants of the towns we spend our evenings in. Dubrovnik's old town is an extraordinary maze of medieval streets surrounded by a 3 kilometre long city wall. From Dubrovnik we head to one of the Elaphiti islands for a swim stop. Afternoon arrival in Slano a peaceful fishermen's village. 7-night cruise from Dubrovnik to Split on in a cabin with private facilities, and 3 nights in first class hotels. Upon arrival, shared transfer from Dubrovnik airport to port, welcome cruise dinner, daily breakfast, six lunches and a Captain's dinner with live music.



ITINERARY

Day 1: Dubrovnik – arrival

You will be transferred from Dubrovnik airport to the port, where embarkation begins at 2pm. Get settled in your cabin before going on a walking tour of Dubrovnik around 17:00h, the "Pearl of Adriatic". Walk through Stradun - both a street and a square, the most famous place inside the town walls, enlisted as UNESCO's World Heritage site, where your guide will show you the most interesting sights of Dubrovnik and visit the Franciscan Monastery with its Pharmacy. After returning to ship enjoy a Welcome reception followed by dinner this evening. (WR, D)

Day 2: Dubrovnik – Slano (Oyster Tasting)

Wild Earth Travel

Small Ships, Big Adventures

0800 945 3327 (within New Zealand) | +64 (0) 3 365 1355 | **1800 107 715** (within Australia)

info@wildearth-travel.com | **wildearth-travel.com**



Wild Earth Travel

Small Ships, Big Adventures

wildearth-travel.com

info@wildearth-travel.com

Early in the morning enjoy the magic scenery as the ship cruises around Dubrovnik city walls to continue to one of the Elaphiti islands for a swim stop. Afternoon arrival in Slano, a peaceful fishermen's village and our starting point to Ston, situated on Peljesac peninsula and once fortified small village famous for its oysters. Peljesac peninsula is known as one of the best wine-producing regions in Croatia. After exploring the town, we leave to a small nearby village to enjoy the authentic local oyster tasting. Overnight and Captain's dinner on board in Slano. (B,L,T,CD)

Day 3: Slano – Mljet National Park – Kor ula

In the morning we head north to the Island of Mljet. Join the Cruise Manager for a stroll to the famous salt lakes in the Mljet National Park. Continue our cruise towards the Kor ula island, best known as the birthplace of Marco Polo. Afternoon arrival in Kor ula followed by a guided walking tour of this enchanting town surrounded by walls, which is one of the best-preserved medieval cities in the Mediterranean. Overnight in Kor ula where you can enjoy a gourmet experience at the multiple restaurants and bars. (B, L)

Day 4: Kor ula – Biševo – Vis Island

Early in the morning we sail to small island Biševo to visit the Blue Cave, a magnificent natural phenomenon. The possibility of our visit will depend on weather conditions, however you will be notified of this on time. Cruise towards the island of Vis once a strategic naval Yugoslav base and restricted to the public. Due to this isolation, Vis has a special charm - "the Mediterranean as it once was" making it interesting to visit. Taste some exquisite wine sorts in one of the Vis traditional wineries. If interested, visit the remains of the Roman thermal place, City Museum or simply take a walk to enjoy the view. Overnight in one of the harbors on the island of Vis. (B,L)

Day 5: Vis Island – Hvar Island

In the morning head further towards island of Hvar, the longest and sunniest island in the Adriatic, with a swim stop and lunch on board. Join a guided tour of the town of Hvar where you will see many historical sights of the town, such as St Stephen's Square and Cathedral, the Arsenal with the theatre built on its first floor, the first municipal theatre in Europe. Above Hvar Town is the

impressive fortress Fortica offering magnificent views over the bay and Pakleni islands. Overnight in Hvar or Stari Grad. (B, L)

Day 6: Hvar Island – Trogir (Krka National Park excursion)

Early morning departure to the old Dalmatian town Trogir. After docking join a guided tour of Trogir with a local tour guide. Trogir is sometimes referred to as "miniature Venice" or a "mini-Dubrovnik" because of its ancient walls, or a "floating museum town" \- as it has a masterful architecture including some stunning Venetian palaces. Afterwards, you will discover the beauty of the Krka National Park and the small access port of Skradin where the flora and fauna are exceptional. Overnight in Trogir. (B, L)

Day 7: Trogir – Split

In the morning set sail to Split with a stop along the way to swim and relax, if weather permits, with lunch on board. In the late afternoon we arrive at Split to spend the night. Arriving in Split, join a guided tour of the city, visit the seafront promenade and Roman Emperor Diocletian's Palace. The historical center of the city is listed as a UNESCO World Heritage site. Your evening is free in Split. (B, L)

Day 8: Split – Plitvice – Opatija

After breakfast it's time to disembark and bid our crew farewell. We journey north by motorcoach for a visit to Plitvice Lakes National Park, a UNESCO World Heritage site. In Plitvice, we walk around several of the lower lakes. The Park is a natural wonder with 16 terraced lakes surrounded by wooded mountains and lush vegetation. After our visit, we motor on to Opatija where dinner is served at our hotel. (B, D)

Day 9: Opatija – Postojna – Venice

After breakfast, we travel to Slovenia and visit the unique and beautiful Postojna Cave, one of the largest in Europe. We tour this wondrous subterranean world by miniature electric train. Afterward, we drive to Venice. You will be met and transferred to your hotel. The rest of the day is at leisure until you gather for a Welcome Dinner with your Tour Director and traveling

Wild Earth Travel

Small Ships, Big Adventures

0800 945 3327 (within New Zealand) | +64 (0) 3 365 1355 | **1800 107 715** (within Australia)

info@wildearth-travel.com | **wildearth-travel.com**



companions. (B, D)

Day 10: Venice

We begin exploring Venice with a boat ride to Murano Island, famous for its artistic glassware. Visit a glassblowing factory, where you will watch a demonstration of traditional Venetian glassblowing by master craftsmen. Then, on to St. Mark's Square, for the walking tour, viewing the St. Mark's Basilica and the Doge's Palace, and enjoying views of the Bell Tower and Bridge of Sighs. The balance of the day is at leisure to enjoy Venice at your own pace, shop, or join an optional gondola ride.(B)

Day 11: Venice - departure

Breakfast in your hotel. (B)



Wild Earth Travel

Small Ships, Big Adventures

wildearth-travel.com

info@wildearth-travel.com

YOUR SHIP: MY WAY, STELLA MARIS, ARCA, DESIRE OR EQUATOR

YOUR SHIP:

**My Way, Stella Maris, Arca, Desire
or Equator**

VESSEL TYPE:

LENGTH:

PASSENGER CAPACITY:

BUILT/REFURBISHED:

My Way

The 46 metre long MV My Way was launched in 2018 and provides a high level of comfort to cruise the Croatian Coastline. Unusually My Way has 2 x single cabins as well as 19 double or twin cabins spread across 3 decks. There is a large outdoor eating area to the rear of the main deck, an indoor dining room with bar and the large sun deck features a small jacuzzi style pool.

Cabins. All cabins have ensuite bathrooms with showers and W/C. All cabins have air conditioning, and are provided with toiletries, LCD TV, a safe, a hairdryer and a small desk.

Upper deck cabins measure 8/10 M2 and have windows. Main deck cabins measure 12/14 M2, plus the ensuite bathroom. Main deck cabins have windows or portholes. Lower deck cabins 14/16 M2, plus the ensuite bathroom. Lower deck cabins have portholes.

Stella Maris

M/S Stella Maris is a deluxe vessel, with maximum capacity of 36 passengers in 18 twin and double cabins. All cabins are modern and fully equipped with A/C, LCD TV, safe deposit box,

fire alarm, internal communication system between room and bar. Bathrooms are equipped with toilet, shower, wash basin, hair dryer, slippers, bathrobe, and for added convenience cosmetic package. All cabins are sound-proof and each cabin comes with the fire-proof doors.

A fully air-conditioned upper deck dining room can accommodate all passengers at once, yet offer a great degree of privacy for each guest. There is free wireless internet (Wi-Fi), loudspeakers, audiosystem, and a direct telephone communication cabin-bar on board. The kitchen is made in line with the latest HACCP standards.

An extension of the restaurant is outdoors, on the covered part of the upper deck, spacious enough for all passengers and tables, chairs and including a public lavatory. To make the most of every swimming opportunity, there is a platform with a ladder for easy access to the water.

Ship Amenities: Salon/restaurant, bar, outdoor showers, swimming platform, PA system, complimentary Wi-Fi.

Cabins include: LCD TV (satellite system), safe box, bathrooms - toilet, shower, wash basin, hair dryer, slippers, bathrobe.

Arca

M/S Arca is a modern deluxe vessel refurbished in 2017, with maximum capacity of 38 passengers in 19 twin and double cabins. All cabins are modern and fully equipped with A/C, LCD TV, safe deposit box, fire alarm, internal communication system between room and bar.

Bathrooms are equipped with toilet, shower, wash basin, hair dryer, and for added convenience cosmetic package. All cabins are sound-proof and each cabin comes with the fire-proof doors.

Wild Earth Travel

Small Ships, Big Adventures

0800 945 3327 (within New Zealand) | +64 (0) 3 365 1355 | **1800 107 715** (within Australia)

info@wildearth-travel.com | **wildearth-travel.com**



Wild Earth Travel

Small Ships, Big Adventures

wildearth-travel.com

info@wildearth-travel.com

A fully air-conditioned upper deck dining room can accommodate all passengers at once, yet offer a great degree of privacy for each guest. There is free wireless internet (Wi-Fi), loudspeakers, audio-system, and a direct telephone communication cabin-bar on board. The kitchen is made in line with the latest HACCP standards. An extension of the restaurant is outdoors, on the covered part of the upper deck, spacious enough for all passengers and tables, chairs and including one public lavatory. To make the most of every swimming opportunity, there is a platform with a ladder for easy access to the water, as well as small swimming pool at the rear of the ship. Electricity on board: 220V.

Cabins. All cabins have are fully equipped with A/C, LCD TV, safe deposit box, fire alarm, internal communication system between room and bar. Bathrooms are equipped with toilet, shower, wash basin, hair dryer, slippers, bathrobe, and for added convenience cosmetic package. All cabins are sound-proof and each cabin comes with the fire-proof doors.

Desire

The wonderful M/S Desire, launched in 2017, is a state-of-the-art vessel with the latest equipment and amenities. Maximum capacity is 38 passengers in 19 twin, double and triple cabins, guaranteeing an intimate setting for all guests. At 48 metres long she is one of the roomier vessels to be found along this coastline.

All cabins have are fully equipped with A/C, LCD TV, safe deposit box, fire alarm, internal communication system between room and bar. Bathrooms are equipped with toilet, shower, wash basin, hair dryer, slippers, bathrobe, and for added convenience cosmetic package. All cabins are sound-proof and each cabin comes with the fire-proof doors.

A fully air-conditioned upper deck dining room can

accommodate all passengers at once, yet offer a great degree of privacy for each guest. The restaurant is equipped with a bar and LCD TV, and each table has easy-access chairs.

There is also a corner table for buffet breakfast, armchair and small coffee table in the bar, as well as free wireless internet (Wi-Fi), loudspeakers, audio-system, and a direct telephone communication cabin-bar. The kitchen is made in line with the latest HACCP standards. An extension of the restaurant is outdoors, on the covered part of the upper deck, spacious enough for all passengers and tables, chairs and including one public lavatory. Electricity on board: 220V.

Equator

Equator was built and launched in 2017 in the Split shipyard, having been designed specifically for cruising the coast and islands of Croatia's Adriatic coastline. With its compact size (39 metres long) and good maneuvering abilities, she can access the small ports and harbours of inaccessible to even medium sized cruise vessels. She has just 18 cabins, Equator carries a maximum of just 36 passengers in comfort. Equator is smaller and less luxurious than the other ships above, but still provides an excellent and comfortable base to explore the coast of Croatia.

Equator has 18 spacious cabins, all with private facilities and air-conditioning providing a premium cruise. Passenger cabins are situated on two decks and are all fully air conditioned, with an independent ventilation system and modern private en suite shower and toilet.

All cabins are equipped with twin (200x80 cm) or double (200x160 cm) beds, Satellite LCD TV, desk and chair, mirror, night lamps, safe deposit box, radio, hair dryer, 220 V electric supply, lifejacket, wardrobe and luggage space under bed, as well as the latest safety & fire alarm and sound system for

Wild Earth Travel

Small Ships, Big Adventures

0800 945 3327 (within New Zealand) | +64 (0) 3 365 1355 | **1800 107 715** (within Australia)

info@wildearth-travel.com | **wildearth-travel.com**



Wild Earth Travel

Small Ships, Big Adventures

wildearth-travel.com

info@wildearth-travel.com

messages from the cruise manager or group leader.

Standard cabins have two portholes while main deck cabins have a cabin window and porthole in bathroom.



n bathroom.



Wild Earth Travel

Small Ships, Big Adventures

0800 945 3327 (within New Zealand) | +64 (0) 3 365 1355 | **1800 107 715** (within Australia)

info@wildearth-travel.com | **wildearth-travel.com**

Wild Earth Travel

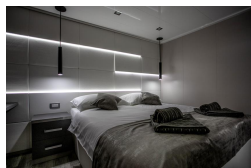
Small Ships, Big Adventures

wildearth-travel.com

info@wildearth-travel.com

INSIDE YOUR SHIP

Lower Deck Cabin



Main Deck Cabin



Upper Deck Cabin



Wild Earth Travel

Small Ships, Big Adventures

0800 945 3327 (within New Zealand) | +64 (0) 3 365 1355 | 1800 107 715 (within Australia)

info@wildearth-travel.com | wildearth-travel.com

Wild Earth Travel

Small Ships, Big Adventures

wildearth-travel.com

info@wildearth-travel.com

PRICING

12-Jul-2025 to 22-Jul-2025

Lower Deck Cabin	3405 EUR pp
Main Deck Cabin	3705 EUR pp
Upper Deck Cabin	3805 EUR pp

19-Jul-2025 to 29-Jul-2025

Lower Deck Cabin	3405 EUR pp
Main Deck Cabin	3705 EUR pp
Upper Deck Cabin	3805 EUR pp

26-Jul-2025 to 05-Aug-2025

Lower Deck Cabin	3405 EUR pp
Main Deck Cabin	3705 EUR pp
Upper Deck Cabin	3805 EUR pp

26-Jul-2025 to 05-Aug-2025

Lower Deck Cabin	3405 EUR pp
Main Deck Cabin	3705 EUR pp
Upper Deck Cabin	3805 EUR pp

02-Aug-2025 to 12-Aug-2025

Lower Deck Cabin	3405 EUR pp
Main Deck Cabin	3705 EUR pp
Upper Deck Cabin	3805 EUR pp

16-Aug-2025 to 26-Aug-2025

Lower Deck Cabin	3405 EUR pp
Main Deck Cabin	3705 EUR pp
Upper Deck Cabin	3805 EUR pp

30-Aug-2025 to 09-Sep-2025

Lower Deck Cabin	3705 EUR pp
Main Deck Cabin	4005 EUR pp
Upper Deck Cabin	4105 EUR pp

20-Sep-2025 to 30-Sep-2025

Lower Deck Cabin	3795 EUR pp
Main Deck Cabin	4095 EUR pp
Upper Deck Cabin	4195 EUR pp

04-Oct-2025 to 14-Oct-2025

Lower Deck Cabin	3495 EUR pp
Main Deck Cabin	3795 EUR pp
Upper Deck Cabin	3895 EUR pp

ADDITIONAL CHARGES:

Port taxes 60 EUR pp