

# Wild Earth Travel

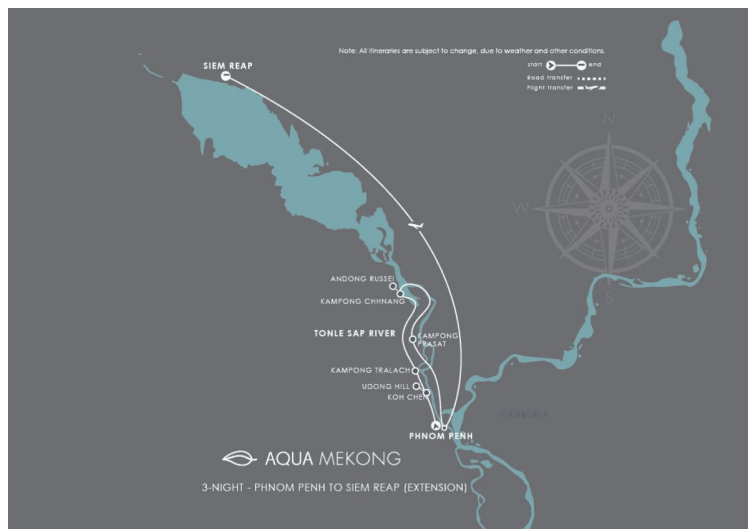
*Small Ships, Big Adventures*

[wildearth-travel.com](http://wildearth-travel.com)

[info@wildearth-travel.com](mailto:info@wildearth-travel.com)

## DISCOVERY EXTENSION CRUISE - FROM PHNOM PENH TO SIEM REAP

A brief and rewarding taste of Mekong's agrarian heartlands. Aboard the luxurious Aqua Mekong, this 3-night river cruise on the Mekong river offers plenty to see and explore for travelers with limited time. Our private fleet of ergonomic, sheltered launch boats put the pleasure and efficiency in exploring Mekong's myriad waterways, making the most of your time in this beautiful region.



### ITINERARY

#### Day 1 CAMBODIA Phnom Penh

Our crew warmly welcomes you aboard the Aqua Mekong with our special refreshers, such as the salted watermelon crush with Thai basil. Together we celebrate our journey towards the heart of the Mekong river with the Khmer Apsara dance performance, a famous centuries-old tradition that is memorialized on the temple walls of Angkor Wat.

#### Day 2 CAMBODIA Tonle Sap River - Koh Chen - Kampong Prasat

In the silversmith village of Koh Chen, witness artisans produce magnificent royal Khmer silverware. Keep an eye out for their famous silver bowls, regularly chosen by Cambodia's king as gifts for visiting dignitaries. Continuing onwards to Udong, the royal capital from the 17th to 19th century, learn about the life of Buddhist monks and interact with them at the Vipassana Dhura Mandala meditation center. In the afternoon, a walking tour of Kampong Prasat offers

Wild Earth Travel

*Small Ships, Big Adventures*

0800 945 3327 (within New Zealand) | +64 (0) 3 365 1355 | 1800 107 715 (within Australia)

[info@wildearth-travel.com](mailto:info@wildearth-travel.com) | [wildearth-travel.com](http://wildearth-travel.com)



# Wild Earth Travel

*Small Ships, Big Adventures*

**wildearth-travel.com**

**info@wildearth-travel.com**

an intimate look at local ways of life and their riverside habitat.

## Day 3 CAMBODIA Tonle Sap River - Kampong Chhnang – Kampong Tralach

As the sun rises on the lush countryside, we head to the residence of traditional potters and palm-sugar producers, whose age-old techniques are still valuable today. On a bicycle or chauffeured tuk-tuk, head into the rice paddies to watch wizened masters scale sky-high palm trees to harvest their fruit, towering over us. Cruise across the glassy water and disembark among the lotuses for an ox-cart ride along the Tonle Sap riverbanks, past lacquered wooden houses where during these dry months residents take refuge in the relative cool of these impromptu outdoor living rooms.

## Day 4 CAMBODIA Phnom Penh

We show off the Cambodian capital to our passengers by motorized tuk-tuk, the Royal Palace, Silver Pagoda and the National Museum of Cambodia, home to the world's largest collection of Khmer art. For those who wish, we visit the Tuol Sleng Museum of Genocide or choose to shop at the Russian Market. We bid farewell to 4-night guests who are disembarking in Phnom Penh. Airplane transfers are provided if you would like to continue your Cambodian adventure to Siem Reap and its ancient lost city of Angkor Wat. Guests will be fully escorted by our guides in a luxury car transfer to Phnom Penh Airport. SIEM REAP FLIGHT EXTENSION During low water season, cruise vessels are not able to travel up to the Tonle Sap Lake due to the water level. Airplane transfers via Cambodian Angkor Air are included in your cruise fare in order to continue your Cambodian adventure with us to Siem Reap and its ancient lost city of Angkor Wat. Requests for flight changes and/or upgrades are not available. Please kindly inform our Reservations team should you choose to remain in Phnom Penh after disembarkation.

### Please Note:

Itineraries are subject to change.

Wild Earth Travel  
*Small Ships, Big Adventures*

**0800 945 3327** (within New Zealand) | +64 (0) 3 365 1355 | **1800 107 715** (within Australia)

info@wildearth-travel.com | **wildearth-travel.com**



# Wild Earth Travel

*Small Ships, Big Adventures*

**wildearth-travel.com**

**info@wildearth-travel.com**

## YOUR SHIP: AQUA MEKONG

<b>YOUR SHIP:</b>	<b>Aqua Mekong</b>
<b>VESSEL TYPE:</b>	<b>Luxury River Expedition</b>
<b>LENGTH:</b>	<b>62.4 meters / 204 feet</b>
<b>PASSENGER CAPACITY:</b>	<b>40</b>
<b>BUILT/REFURBISHED:</b>	<b>2014</b>

Spacious and indulgent, yet intimate enough to feel entirely exclusive, the Aqua Mekong incorporates relaxed yet refined lounging and dining areas and can accommodate a maximum of 40 guests plus crew. Modern navigation technologies and the highest cruise ship standards as well as our experienced river pilot and crew ensure smooth travel and safety on the water.

The Aqua Mekong has 20 air conditioned Design Suites, each one a generous 30 square meters (320 square feet), eight with balconies and all created entirely of local materials with the relaxed sophistication and contemporary comforts of a five star resort. Floor to ceiling panoramic windows allow guests to gaze upon the Mekong from the pillow top California king size bed that can be converted upon request into two full twin beds. More captivating views await on the plush, roomy daybed placed by the window wall or for our eight balcony accommodations, outside along with a romantic table for two. Those who wish to keep up on the world beyond these enthralling riverbanks will appreciate the flat screen television and complementary high speed wireless internet.

Sunlit indoors and out, the top level Observation Deck aboard the Aqua Mekong has been designed to seamlessly connect

guests with the constantly shifting landscape of floating Vietnamese villages, French colonial church spires and gilded Buddhist stupas along this mighty river, always in the utmost comfort. Whether one chooses to relax in the air conditioned Indoor Lounge, go horizontal under the sun outside at the ship's Outdoor Lounge area or cool off with a plunge in the shimmering pool at the bow side, the Observation Deck ensures that the river always remains in full view.

Guests gravitate to the Indoor Lounge in the mornings for ca phe a, Vietnamese coffee poured over ice with sweet condensed milk, between excursions to swap travelers tales and for daily lectures from the expert local guides.



cal guides.

Wild Earth Travel

*Small Ships, Big Adventures*

**0800 945 3327** (within New Zealand) | +64 (0) 3 365 1355 | **1800 107 715** (within Australia)

info@wildearth-travel.com | wildearth-travel.com

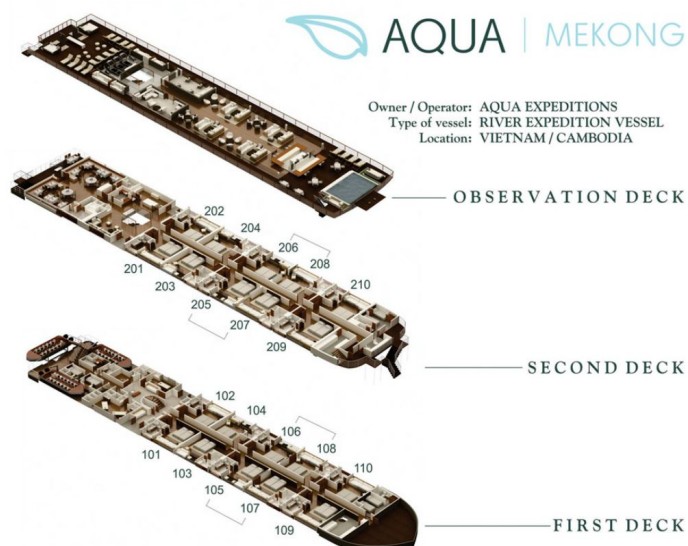
# Wild Earth Travel

*Small Ships, Big Adventures*

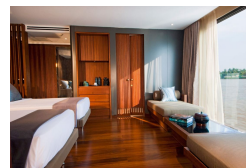
[wildearth-travel.com](http://wildearth-travel.com)

[info@wildearth-travel.com](mailto:info@wildearth-travel.com)

## INSIDE YOUR SHIP



Suite. From



Wild Earth Travel

*Small Ships, Big Adventures*

0800 945 3327 (within New Zealand) | +64 (0) 3 365 1355 | 1800 107 715 (within Australia)

[info@wildearth-travel.com](mailto:info@wildearth-travel.com) | [wildearth-travel.com](http://wildearth-travel.com)

# Wild Earth Travel

*Small Ships, Big Adventures*

**wildearth-travel.com**

**info@wildearth-travel.com**

## PRICING

**12-Aug-2025 to 15-Aug-2025**

Suite. From 4650 USD pp

**09-Sep-2025 to 12-Sep-2025**

Suite. From 4650 USD pp

**16-Dec-2025 to 19-Dec-2025**

Suite. From 4650 USD pp

**30-Dec-2025 to 02-Jan-2026**

Suite. From 5130 USD pp

**27-Jan-2026 to 30-Jan-2026**

Suite. From 4800 USD pp

**24-Feb-2026 to 27-Feb-2026**

Suite. From 4800 USD pp

**24-Mar-2026 to 27-Mar-2026**

Suite. From 4800 USD pp

**21-Apr-2026 to 24-Apr-2026**

Suite. From 4800 USD pp

**11-Aug-2026 to 14-Aug-2026**

Suite. From 4800 USD pp

**08-Sep-2026 to 11-Sep-2026**

Suite. From 4800 USD pp

**15-Dec-2026 to 18-Dec-2026**

Suite. From 4800 USD pp

**29-Dec-2026 to 01-Jan-2027**

Suite. From 5280 USD pp

**26-Jan-2027 to 29-Jan-2027**

Suite. From 5450 USD pp

**23-Feb-2027 to 26-Feb-2027**

Suite. From 5450 USD pp

**23-Mar-2027 to 26-Mar-2027**

Suite. From 5450 USD pp

**20-Apr-2027 to 23-Apr-2027**

Suite. From 5450 USD pp

**24-Aug-2027 to 27-Aug-2027**

Suite. From 5450 USD pp

**14-Dec-2027 to 17-Dec-2027**

Suite. From 5450 USD pp

**28-Dec-2027 to 31-Dec-2027**

Suite. From 5450 USD pp